

235

台灣 新北市
中和區連城路192號6樓
晶睿通訊股份有限公司
JOANNE CHANG



JOANNE CHANG
 VIVOTEK INC
 6TH FL, 192 LIEN CHENG RD
 CHUNG HO DISTRICT
 NEW TAIPEI
 235 TAIWAN

Date: 2019/07/31
 Subscriber: 100504413
 PartySite: 125336
 File No: E324690
 Project No: 4788992952
 PD No: 19041340
 Type: R
 PO Number: C1291904067

Subject: **Procedure And/Or Report Material**

The following material resulting from the investigation under the above numbers is enclosed.

Issue

<u>Date</u>	<u>Vol</u>	<u>Sec</u>	<u>Pages</u>	<u>Revised Date</u>
2019/01/11	X2	A148	Index Page(s)	
2019/01/11	X2	A148	Cert of Compliance	
2019/01/11	X2	A148	Revised Proc/Rpt Section	

If there are illegible images in this package, legible images may be found online via MyHome@UL under My UL Reports/CDA.

Please file revised pages and illustrations in place of material of like identity. New material should be filed in its proper numerical order.

NOTE: Follow-Up Service Procedure revisions DO NOT include Cover Pages, Test Records and Conclusion Pages. Report revisions DO NOT include Authorization Pages, Indices, Section General Pages and Appendixes.

Please review this material and report any inaccuracies to UL's Customer Service Professionals. Contact information for all of UL's global offices can be found at <http://ul.com/aboutul/locations>.

If you'd like to receive updated materials FASTER, UL offers electronic access and/or delivery of this material. For more details, contact UL's Customer Service Professionals as shown above.

This material is provided on behalf of UL LLC(UL) or any authorized licensee of UL.

TPI File

File		Volume	Page	Date:
E324690	Index	X2	1	15-Jul-19

Index

<u>Product Type</u>	<u>Model/Type Reference</u>	<u>Report Reference #</u>	<u>Status</u>
Outdoor Network Camera	IP8330, IP8332	E324690-A4-UL	
Network Camera	IP8162, IP8162P, CIVS-IPC-6000P	E324690-A9-UL	
Network Camera	FD8162, FD8162V, FD8362, FD8362E, CIVS-IPC-6020	E324690-A10-UL	
Network Video Recorder	NR8201, NR8301	E324690-A12-UL	
Network Camera	FE8171V	E324690-A15-UL	
Network Camera	1) MD8562 2) MD8562D	E324690-A17-UL	
Network Camera	IK-WD14A, IK-WR14A	E324690-A21-UL	
Outdoor Dome Network Camera	FD8372	E324690-A22-UL	
Network Camera	FE8172, FE8172V	E324690-A25-UL	
Network Camera	IP8332-C	E324690-A28-UL	
Outdoor Speed Dome Network Camera	SD833XE (X = 0-9, A-Z or blank)	E324690-A29-UL	
Network Camera	IP8172, IP8172P	E324690-A30-UL	
Network Camera	CIVS-IPC-6400	E324690-A31-UL	
Network Camera	CIVS-IPC-3421V	E324690-A33-UL	
Indoor Dome Network Camera	FD8136-FXX (The XX=0-9, A-Z or blank for marketing purpose)	E324690-A34-UL	
Network Camera	IK-WR04A, IK-WD04A	E324690-A36-UL	
Network Camera	IP8372	E324690-A37-UL	
IP Camera VGA	S5003FDXXXXXXXXXXXXX (X can be 0-9, A-Z, a-z, blank or "-", and no impact safety related critical components and construction.)	E324690-A38-UL	
Network Camera	IK-WB81A	E324690-A39-UL	
1080P Fixed Dome Network Camera	FD8163, FD8363	E324690-A40-UL	
Network Camera	CIVS-IPC-6050	E324690-A44-UL	
Network Camera	FD8355EHV, FD8365EHV	E324690-A49-UL	
Network Camera	IK-WD05A, IK-WR05A	E324690-A50-UL	
Network Camera	FD8371EV	E324690-A51-UL	
Network Camera	CIVS-IPC-6400E	E324690-A52-UL	
Network Camera	IP8355EH, IP8365EH	E324690-A53-UL	
Network Camera	CIVS-IPC-6500PD	E324690-A54-UL	
Network Camera	CIVS-IPC-7530PD	E324690-A56-UL	
Network Camera	MD8531H-FXX(X= 0-9, a-z, A-Z, "-", "/" or blank for marketing purpose)	E324690-A58-UL	
Network Camera	IP8155HP, IP8165HP	E324690-A59-UL	
Network Camera	FD8152V-FX(B), FD8152V-FX(W) (X=0-9,a-z,A-Z,"-", "1" or	E324690-A60-UL	

File		Volume	Page	Date:
E324690	Index	X2	2	15-Jul-19

	blank for marketing purpose: (B) Black for enclosure color; (W) White for enclosure color).		
Network Camera	FE8181, FE8181V, FE8191 and FE8391-V	E324690-A61-UL	
Network Video Recorder	ND8401	E324690-A62-UL	
Camera	IB8367, IB8367-R	E324690-A63-UL	
Network Camera	SD8161, SD8161-XX (X = 0-9, a-z, A-Z or blank for marketing purpose)	E324690-A64-UL	
Network Camera	IB8338-H, IB8338-HR	E324690-A66-UL	
Network Camera	FD8173-H, FD8373-EHV	E324690-A67-UL	
Network Camera	FD8181, FD8381-EV	E324690-A68-UL	
Network Camera	IK-WD31A, IK-WR31A	E324690-A71-UL	
Network Camera	IB8373-EH	E324690-A72-UL	
Network Camera	FD8167, FD8167-T, FD8138H (indoor use) FD8367-V, FD8367-TV, FD8338-HV (outdoor use)	E324690-A73-UL	
Network Camera	IP816A-HP	E324690-A74-UL	
Network Camera	IK-WF51A, IK-WF51R	E324690-A75-UL	
Stereo Camera	SC8131, AT8131, AT8131-SF	E324690-A76-UL	
IP 360 Dome Camera (5M)	V6050FDxxxxxxx, V6050FDWxxxxxxx (x =0-9, a-z, space or "-" for marketing purpose).	E324690-A77-UL	
Network Camera	CC8370-HV	E324690-A78-UL	
Network Camera	CIVS-IPC-3630, CIVS-IPC- 6630, CIVS-IPC-3620, CIVS- IPC-6620	E324690-A79-UL	
Network Camera	IP9171-HP	E324690-A80-UL	
Network Camera	FD9171-HT, FD9371-HTV, FD9371-EHTV	E324690-A81-UL	
Network Camera	(1) IB9371-HT, (2) IB9371-EHT	E324690-A82-UL	
Network Camera	FE8182	E324690-A83-UL	
Network Camera	FD816C-HF2	E324690-A84-UL	
Communication IP Camera	KX-NTV150XX (X=0~9, A~Z, a~z, space or "-" for marketing purpose)	E324690-A85-UL	
IP Video Doorphone	KX-NTV160XX (X=0~9, A~Z, a~z, space or "-" for marketing purpose)	E324690-A86-UL	
Network Camera	MD8563-EHFX (X= 0-9, a-z, A- Z, "-", "/" or blank for marketing purpose)	E324690-A88-UL	
Network Camera	VC8101	E324690-A90-UL	
Network Camera	MV21-HW, MV71-HW	E324690-A91-UL	
Network Video Recorder	ND9541, ND9441	E324690-A95-UL	
Network Camera	SD9361-XXX, SD9362-XXX, SD9362-XX-v2	E324690-A96-UL	

File		Volume	Page	Date:
E324690	Index	X2	3	15-Jul-19

	(X = 0-9, a-z, A-Z or blank)		
Network Camera	SD9364-EHL, SD9364-EH and SD9363-EHL	E324690-A97-UL	
Network Camera	MS8391-EV	E324690-A98-UL	
Network Camera	FD8166A-N	E324690-A99-UL	
Network Camera	IZ9361-EH	E324690-A100-UL	
Network Camera	SD9161-H	E324690-A101-UL	
Network Camera	(1) FE9182-H (2) FE9382-EHV	E324690-A103-UL	
Network Camera	SC8132	E324690-A105-UL	
NETWORK ATTACHED STORAGE	NR9681, NR9581, SR9681, SR9581	E324690-A106-UL	
Network Camera	CD8371-HNVFX (X=0~9, A~Z, a~z, space or "-" for marketing purpose), CD8371-HNTV	E324690-A107-UL	
Network Camera	FD8177-H, FD8167A, FD8179-H, FD8169A (indoor use) FD8377-HV, FD8367A-V, FD8379-HV, FD8369A-V (outdoor use)	E324690-A108-UL	
Network Camera	SD9365-EH, SD9366-EHL, SD9366-EH, SD9363-XXX-v2, SD9364-XXX-v2, SD9366-XX-v2, SD9364-XX-v2 (X=0-9, a-z, A-Z or blank for marketing purpose.)	E324690-A109-UL	
Network Camera	MS8392-EV	E324690-A110-UL	
Network Video Recorder	ND9441P, ND9541P	E324690-A111-UL	
Network Camera	MD8565-N	E324690-A112-UL	
Network Camera	J-WB51A	E324690-A113-UL	
Network Camera	IB8379-H, IB8377-H, IB8367A, IB8369A	E324690-A114-UL	
Network Camera	CIVS-IPC-8000P	E324690-A115-UL	
Network Camera	CIVS-IPC-8400	E324690-A116-UL	
Network Camera	CIVS-IPC-8020, CIVS-IPC-8030	E324690-A117-UL	
Network Camera	MD8564-EH	E324690-A118-UL	
Network Camera	FD8366-V	E324690-A119-UL	
Network Camera	(1) FE9191 (2) FE9391-EV	E324690-A120-UL	
Network Camera	MA8391-EVT	E324690-A121-UL	
Network Camera	CC8371-HV	E324690-A122-UL	
Network Camera	IP9191-HP	E324690-A123-UL	
Network Camera	FD9365-EHTV, FD9365-HTV, FD8365-HTV-v2	E324690-A124-UL	
Network Camera	MS9390-HV, CIVS-IPC-8080	E324690-A125-UL	
Network Camera	MV12W-HW, MV12WE-HW, MV12N-HW	E324690-A126-UL	
Network Camera	(A) IP8160; (B) IP8160-W	E324690-A127-UL	
Network Camera	CIVS-IPC-8930	E324690-A128-UL	

File		Volume	Page	Date:
E324690	Index	X2	4	15-Jul-19

Network Camera	CIVS-IPC-8070	E324690-A129-UL	
Network Camera	FD9165-HT	E324690-A130-UL	
Network Camera	FD9367-HTV, FD9367-EHTV, FD9367-HV, FD9167-HT, FD9167-H.	E324690-A131-UL	
Network Video Recorder	ND8212W, ND8312	E324690-A132-UL	
Network Camera	IB9367-H, IB9367-HT, IB9367-EH, IB9367-EHT	E324690-A133-UL	
Network Camera	CIVS-IPC-8620	E324690-A134-UL	
Network Camera	(1) IB9365-HT (2) IB9365-EHT	E324690-A135-UL	
Network Camera	CIVS-IPC-8630	E324690-A136-UL	
Network Camera	FD8177-HT (indoor use) FD8377-EHTV, FD8377-HTV (outdoor use)	E324690-A137-UL	
Network Camera	(1) IB8377-HT (2) IB8377-EHT	E324690-A138-UL	
Network Camera	FE9180-H	E324690-A139-UL	
Network Camera	IP9167-HP, IP9167-HT	E324690-A140-UL	
Network Camera	FD9391-EHTV	E324690-A141-UL	
Network Camera	IB9391-EHT	E324690-A142-UL	
Network Video Recorder	1) ND9322P; 2) ND9424P	E324690-A144-UL	
Network Camera	MA9321-EHTV	E324690-A145-UL	
Network Camera	(1) IB9387-EH, (2) IB9387-H (3) IB9387-EHT (4) IB9387-LPR, IB9387-HT	E324690-A148-UL	
Network Camera	TB9330-E, TB9331-E	E324690-A149-UL	
Vehicle Network Video Recorder	NV9311P, NV9411P	E324690-A150-UL	
Network Camera	1) IT9389-HT 2) IT9389-H	E324690-A151-UL	
Network Camera	FD9365-HTVL	E324690-A153-UL	
Network Camera	SNC-WL862	E324690-A156-UL	

CERTIFICATE OF COMPLIANCE

Certificate Number 20190731-E324690
Report Reference E324690-A148-UL
Issue Date 2019-JULY-31

Issued to: VIVOTEK INC
6TH FL, 192 LIEN CHENG RD
CHUNG HO DISTRICT
NEW TAIPEI
235 TAIWAN

**This certificate confirms that
representative samples of**

INFORMATION TECHNOLOGY EQUIPMENT INCLUDING
ELECTRICAL BUSINESS EQUIPMENT

Network Camera (1) IB9387-EH, (2) IB9387-H (3) IB9387-
EHT (4) IB9387-LPR, IB9387-HT

Have been investigated by UL in accordance with the
Standard(s) indicated on this Certificate.

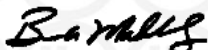
Standard(s) for Safety: UL 60950-1 AND CAN/CSA C22.2 No. 60950-1-07 -
Information Technology Equipment - Safety - Part 1:
General Requirements

Additional Information: See the UL Online Certifications Directory at
<https://iq.ulprospector.com> for additional information.

This *Certificate of Compliance* does not provide authorization to apply the UL Mark. Only the UL Follow-Up Services Procedure provides authorization to apply the UL Mark.

Only those products bearing the UL Mark should be considered as being UL Certified and covered under UL's Follow-Up Services.

Look for the UL Certification Mark on the product.



Bruce Mahrenholz, Director North American Certification Program

UL LLC

Any information and documentation involving UL Mark services are provided on behalf of UL LLC (UL) or any authorized licensee of UL. For questions, please contact a local UL Customer Service Representative at <http://ul.com/aboutul/locations/>



UL TEST REPORT AND PROCEDURE

Standard:	UL 60950-1, 2nd Edition, 2014-10-14 (Information Technology Equipment - Safety - Part 1: General Requirements) CAN/CSA C22.2 No. 60950-1-07, 2nd Edition, 2014-10 (Information Technology Equipment - Safety - Part 1: General Requirements)
Certification Type:	Listing
CCN:	NWQG, NWGQ7 (Information Technology Equipment Including Electrical Business Equipment)
Product:	Network Camera
Model:	(1) IB9387-EH, (2) IB9387-H (3) IB9387-EHT (4) IB9387-LPR, IB9387-HT
Rating:	(1) PoE 42.5-57 Vdc, 0.46-0.34 A or 12 Vdc, 1.25 A (for Model IB9387-EH) (2) PoE 37-57 Vdc, 0.22-0.14 A or 12 Vdc, 0.5 A (for Model IB9387-H) (3) PoE 42.5-57 Vdc, 0.55-0.41 A or DC 12 V, 1.58 A (for Model IB9387-EHT) (4) PoE 37-57 Vdc, 0.33-0.21 A or DC 12 V, 0.83 A (for Model IB9387-LPR, IB9387-HT)
Applicant Name and Address:	VIVOTEK INC 6TH FL, 192 LIEN CHENG RD CHUNG HO DISTRICT NEW TAIPEI 235 TAIWAN

This is to certify that representative samples of the products covered by this Test Report have been investigated in accordance with the above referenced Standards. The products have been found to comply with the requirements covering the category and the products are judged to be eligible for Follow-Up Service under the indicated Test Procedure. The manufacturer is authorized to use the UL Mark on such products which comply with this Test Report and any other applicable requirements of UL LLC ('UL') in accordance with the Follow-Up Service Agreement. Only those products which properly bear the UL Mark are considered as being covered by UL's Follow-Up Service under the indicated Test Procedure.

The applicant is authorized to reproduce the referenced Test Report provided it is reproduced in its entirety.

Any information and documentation involving UL Mark services are provided on behalf of UL LLC (UL) or any authorized licensee of UL.

Prepared by: Stephen Ho

Reviewed by: Timothy Lai

Supporting Documentation

The following documents located at the beginning of this Procedure supplement the requirements of this Test Report:

- A. Authorization - The Authorization page may include additional Factory Identification Code markings.
- B. Generic Inspection Instructions -
 - i. Part AC details important information which may be applicable to products covered by this Procedure. Products described in this Test Report must comply with any applicable items listed unless otherwise stated in the body of this Test Report.
 - ii. Part AE details any requirements which may be applicable to all products covered by this Procedure. Products described in this Test Report must comply with any applicable items listed unless otherwise stated in the body of each Test Report.
 - iii. Part AF details the requirements for the UL Certification Mark which is not controlled by the technical standard used to investigate these products. Products are permitted to bear only the Certification Mark(s) corresponding to the countries for which it is certified, as indicated in each Test Report.

Product Description

The equipment is a Network Camera for use in information technology equipment. The product consists of electronic components are mounted on PCB and housed by metal enclosures and secured plastic cover together with glue. Unit must be mounted on a wall or ceiling.

Model Differences

All models are similar except for model designation, input rating and heater. See enclosure ID 7-01 for details.

Technical Considerations

- Equipment mobility : stationary
- Connection to the mains : No direct connection
- Operating condition : continuous
- Access location : operator accessible
- Over voltage category (OVC) : N/A
- Mains supply tolerance (%) or absolute mains supply values : No direct connection
- Tested for IT power systems : No
- IT testing, phase-phase voltage (V) : N/A
- Class of equipment : Class III (supplied by SELV)
- Considered current rating of protective device as part of the building installation (A) : N/A
- Pollution degree (PD) : PD 2
- IP protection class : IP X0
- Altitude of operation (m) : Up to 2000 meters
- Altitude of test laboratory (m) : less than 2000 meters
- Mass of equipment (kg) : Approx. 1.17 kg
- The product was submitted and evaluated for use at the maximum ambient temperature (T_{ma}) permitted by the manufacturer's specification of: -40 degree C to 50 degree C (for Models IB9387-EH, IB9387-H) -50 to 55 degree C for Models IB9387-EHT, IB9387-LPR, IB9387-HT)
- The product was investigated to the following additional standards: (1) CSA C22.2 NO. 60950-22-17 Edition 2, Revision Date 2017/03/31 & UL 60950-22 Edition 2, Revision Date 2017/03/31.. (2) IEC

62471-1/-2 for IR LED.

- The following accessible locations (with circuit/schematic designation) are within a limited current circuit: Metal enclosure
- The following circuit locations (with circuit/schematic designation) were investigated as a limited power source (LPS): All output ports.
- The following are available from the Applicant upon request: Installation (Safety) Instructions / Manual,
- The outdoor equipment/enclosure was evaluated for use in an ambient range of: -40 to 50 °C for model IB9387-EH, IB9387-H; -50 to 55 °C for model IB9387-EHT, IB9387-HT, IB9387-LPR, ,
- LEDs provided in the product are considered low power devices: Yes
- Based upon the product specification provided by the manufacturer, this unit is intended to be supplied by an UL Listed power source suitable for use at Tma 50 degree C whose output meets SELV/LPS, and by (1) PoE 42.5-57 Vdc, 0.46-0.34 A or 12 Vdc, 1.25 A (for Model IB9387-EH) (2) PoE 37-57 Vdc, 0.22-0.14 A or 12 Vdc, 0.5 A (for Model IB9387-H) (3) PoE 42.5-57 Vdc, 0.55-0.41 A or DC 12 V, 1.58 A (for Model IB9387-EHT) (4) PoE 37-57 Vdc, 0.33-0.21 A or DC 12 V, 0.83 A (for Model IB9387-LPR, IB9387-HT) through an UL Listed ITE.
- The unit is to be connected only to PoE networks without routing to the outside plant.
- For the compliance with UL 60950-22, all interconnecting cables are to be routed inside UL Listed conduits of outdoor use.
- The camera should be installed at least 10 centimeters away from the eave of a building.

Additional Information

4788992952:

UL/CUL Investigation for Network Camera, Models IB9387-EH, IB9387-H Employing the Alternate:

1. Adding three models (IB9387-EHT, IB9387-HT and IB9387-LPR) with new front cover, IR LED board.
2. Adding new input ratings for new models.
3. Adding temperature rating: 55 degree C for Models IB9387-EHT, IB9387-LPR, IB9387-HT)

Additional Standards

The product fulfills the requirements of: UL 60950-22 Edition 2, Revision Date 2017/03/31 and CSA C22.2 NO. 60950-22-17 Edition 2, Revision Date 2017/03/31.

Markings and instructions

Clause Title	Marking or Instruction Details
Inter-connecting cables - External detachable	Listee's Name and Part number (Marking or Instruction)
Power rating - Company identification	Listee's or Recognized company's name, Trade Name, Trademark or File Number
Power rating - Model	Model Number
User Manual	- Installation instruction: See Enclosure 6-01 for details. - The user manual shall have the description as below or equivalent:

	<p>(1) "This product is intended to be supplied by a Listed Power Adapter or DC power source marked "L.P.S." (or "Limited Power Source") and rated (1) PoE 42.5-57 Vdc, 0.46-0.34 A or 12 Vdc, 1.25 A (for Model IB9387-EH) (2) PoE 37-57 Vdc, 0.22-0.14 A or 12 Vdc, 0.5 A (for Model IB9387-H) (3) PoE 42.5-57 Vdc, 0.55-0.41 A or DC 12 V, 1.58 A (for Model IB9387-EHT) (4) PoE 37-57 Vdc, 0.33-0.21 A or DC 12 V, 0.83 A (for Model IB9387-LPR, IB9387-HT).</p> <p>(2) "The camera is only to be connected to PoE networks without routing to outside plants."</p> <p>(3) "The camera should be installed at least 10 centimeters away from the eave of a building."</p>
--	---

Power rating - Ratings (Optional)	Ratings (voltage, frequency/dc, current)
-----------------------------------	--

Special Instructions to UL Representative

- Please verify the Manufacturer has a method to manage distribution of all products with Canadian certification mark not intended include the dual markings.
- For item 01 and 01a of Critical Components List:
The Field Representative should verify the Tma (maximum ambient temperature) is minimum 50 degree C and complied with LPS from the updated version of UL reports for Power Supply was certified by UL 60950-1 2nd edition, 2014-10-14 or later (provided from customer).

Production-Line Testing Requirements

Electric Strength Test Special Constructions - Refer to Generic Inspection Instructions, Part AC for further information.

Model	Component	Removable Parts	Test probe location	V rms	V dc	Test Time, s
--	--	--	--	--	--	--

Earthing Continuity Test Exemptions - This test is not required for the following models:

All models.

Electric Strength Test Exemptions - This test is not required for the following models:

All models.

Electric Strength Test Component Exemptions - The following solid-state components may be disconnected from the remainder of the circuitry during the performance of this test:

--

Sample and Test Specifics for Follow-Up Tests at UL

Model	Component	Material	Test	Sample(s)	Test Specifics
--	--	--	--	--	--

1.5.1	TABLE: list of critical components					Pass
Object/part or Description	Manufacturer/ trademark	type/model	technical data	Product Category CCN(s)	Required Marks of Conformity	Supplement ID
01.Power Adaptor (For model IB9387-EH used only) (Optional)	Interchangeable	Interchangeable	O/P: 12 Vdc, 1.25 A minimum or 42.5-57 Vdc, 0.46-0.34 A. Comply with L.P.S. Tma 50 degree C.	NWGQ/7	UL	
01a.Power Adaptor (For model IB9387-H used only) (Optional) (Alternate)	Interchangeable	Interchangeable	O/P: 12 Vdc, 0.5 A minimum or 37-57 Vdc, 0.22-0.14 A. Comply with L.P.S. Tma 50 degree C.	NWGQ/7	UL	
01b.Power Adaptor (For model IB9387-EHT used only) (Optional) (Alternate)	Interchangeable	Interchangeable	O/P: 12 Vdc, 1.58 A minimum or 42.5-57 Vdc, 0.55-0.41 A. Comply with L.P.S. Tma 55 degree C.	NWGQ/7	UL	
01c.Power Adaptor (For model IB9387-HT and IB9387-LPR used only) (Optional) (Alternate)	Interchangeable	Interchangeable	O/P: 12 Vdc, 0.83 A minimum or 37-57 Vdc, 0.33-0.21 A. Comply with L.P.S. Tma 55 degree C.	NWGQ/7	UL	
02. Enclosure (For model IB9387-EH and IB9387-H used only)	--	--	See enclosure diagram 4-01 for details.	--	--	
02-1. Lens cover (For model IB9387-EH and IB9387-H used only)	TEIJIN LIMITED RESIN AND PLASTIC	L-1225Z(#1)(f1)	HB minimum. 3.0 mm thick minimum. 115 degree C minimum. See enclosure diagram 4-02 for details.	QMFZ2 (E50075)	UL	
02-1-1. Glue for lens cover	GUANGZHOU BAIYUN CHEMICAL INDUSTRY CO LTD	SMG533	V-2 minimum or less than 4g	--	--	
02-1-1a. Glue for lens cover (Alternate)	CEMEDINE	SUPER X NO.8008	V-2 minimum or less than 4g	--	--	
02-2. Front and body metal enclosure	Interchangeable	Interchangeable	Aluminum alloy, 3.6 mm thick minimum. See enclosure diagram 4-01 for details.	--	--	
02a. Enclosure (For models IB9387-EHT,	--	--	See enclosure diagram 4-07 for details.	--	--	

IB9387-HT and IB9387-LPR used only)						
02a-1. Front lens cover (Center)	TEIJIN LIMITED RESIN AND PLASTIC	L-1225Z(#1)(f1)	HB minimum. 1.5 mm thick minimum. 115 degree C minimum. See enclosure diagram 4-10 for details	QMFZ2 (E50075)	UL	
02a-2. Front lens cover (Middle frame)	SABIC INNOVATIVE PLASTICS B V	940(f1)	HB minimum. 1.5 mm thick minimum. 120 degree C minimum. See enclosure diagram 4-10 for details.	QMFZ2 (E45329)	UL	
02a-3. Front lens cover (Outer)	SABIC JAPAN L L C	143R(f1)	HB minimum. 3.0 mm thick minimum. 130 degree C minimum. See enclosure diagram 4-10 for details.	QMFZ2 (E45587)	UL	
02a-4. Glue for front lens cover	CEMEDINE	SUPER X NO.8008	V-2 minimum or less than 4g	--	--	
02a-5. Front and body metal enclosure	Interchangeable	Interchangeable	Aluminum alloy, 3.6 mm thick minimum. See enclosure diagram 4-10 for details.	--	--	
03. Electric Double Layer Capacitors (BT2)	ELNA CO., LTD.	DX-5R5H334U	Rated 5.5 Vdc, 0.33 F	--	--	
04. IR LED (2 provided) (For model IB9387-EH and IB9387-H used only)	Lextar Electronics Corporation	PR35F0B	Wavelength 850 nm, Lamp classification group: Exempt Group	--	--	
05. O-ring	--	--	--	--	--	
05-1. O-ring (Between metal front cover and body enclosure)	MOMENTIVE PERFORMANCE MATERIALS JAPAN L L C	TSE2186U(aq)	HB minimum, Silicone rubber overall see enclosure 4-03, 4-09 for details.	QMFZ2	UL (E56745)	
05-2. O-ring (Between screw and body enclosure)	MING YEE INDUSTRIAL CO., LTD.	612017300G	EPDM rubber, overall see enclosure 4-04 for detail. (refer to E324690-A4).			
05-3. O-ring (For Hole of cable)	MOMENTIVE PERFORMANCE MATERIALS JAPAN L L C	TSE2186U(aq)	HB minimum, Silicone rubber overall see enclosure 4-05 for details.	QMFZ2	UL (E56745)	

06. Internal plastic parts/material	Interchangeable	Interchangeable	HB or HBF minimum	QMFZ2	UL	
07. PWB	Interchangeable	Interchangeable	V-1 minimum, 105 degree C minimum.	ZPMV2	UL	
08. Plastic Material of Flexible Printed Wiring (Optional)	Interchangeable	Interchangeable	HB min. or HBF min. when no components mounted on surface.	QMFZ2 or QMTS2	UL	
08a. Plastic Material of Flexible Printed Wiring (Alternate) (Optional)	Interchangeable	Interchangeable	HB min. or HBF min. when no components mounted on surface.	ZPMV2 or ZPXK2	UL	
08b. Plastic Material of Flexible Printed Wiring (Alternate) (Optional)	Interchangeable	Interchangeable	V-1 min. or VTM-1 min. when components mounted on surface existed.	ZPMV2 or ZPXK2	UL	
09. Label	Interchangeable	Interchangeable	59 degree C if maximum surface temperature not specified.	PGDQ2, PGJ12	UL	
09a. Permanency of Marking (Alternate)	--	--	Engraved laser marking.	--	--	
09b. Permanency of Marking (Alternate)	--	--	Permanently ink-stamped, silk-screened, molded in, or in self-adhesive labels.	--	--	
10. Interconnecting Cable (Optional)	Interchangeable	Interchangeable	Minimum 60 degree C, 57 V, maximum 3.05 m long, jacketed, VW-1 or FT-1	AVLV2, ZPFW2, DVPJ	UL	
10a. Interconnecting Cable (Optional) (Alternate)	Interchangeable	Interchangeable	Maximum 3.05 m long, jacketed, type CMP, CMR, CMG, CM, CMX, CMUC, or CMH.	DUZX, ZPFW2, DUXR/2	UL	
11. Wiring, internal secondary SELV circuits (Optional)	Interchangeable	Interchangeable	FEP, PTFE, PVC, TFE, neoprene, polyimide or marked VW-1; min 57 V, 60 degree C.	AVLV2	UL	
12. Connectors and Receptacles (secondary SELV circuits)	Interchangeable	Interchangeable	Copper alloy pins housed in bodies of plastic rated V-2 minimum	QMFZ2	UL	
12a. Connectors and Receptacles (secondary SELV circuits) (alternate)	Interchangeable	Interchangeable	Minimum 57 V.	ECBT2, RTRT2	UL	

12b. Connectors and Receptacles (secondary SELV circuits) (alternate)	Interchangeable	Interchangeable	--	DUXR2	UL	
13. Signal transformer (T1)	Interchangeable	Interchangeable	105 degree C minimum. See enclosure diagram 4-06 for details.	--	--	
14. IR LED(LD1, LD5) (For models IB9387-EHT, IB9387-HT and IB9387-LPR used only) (2 provided)	Lextar Electronics Corporation	PR88F03	Wavelength 850 nm Lamp classification group: Exempt Group	--	--	
15. IR LED(LD2, LD3) (For models IB9387-EHT, IB9387-HT and IB9387-LPR used only) (2 provided)	Lextar Electronics Corporation	PR35F0A	Wavelength 850 nm Lamp classification group: Exempt Group	--	--	
16. IR LED(LD4, LD6) (For models IB9387-EHT, IB9387-HT and IB9387-LPR used only) (2 provided)	Lextar Electronics Corporation	PR35F0B	Wavelength 850 nm Lamp classification group: Exempt Group	--	--	

Enclosures

<u>Type</u>	<u>Supplement Id</u>	<u>Description</u>
Photographs	3-01	Overall View - 1
Photographs	3-02	Overall View - 2
Photographs	3-03	Internal View - 1 (For Model IB9387-EH)
Photographs	3-04	Internal View - 2 (For Model IB9387-H)
Photographs	3-05	Internal View - 3
Photographs	3-06	LED Board View - 1
Photographs	3-07	LED Board View - 2
Photographs	3-08	Sensor Board View - 1
Photographs	3-09	Sensor Board View - 2
Photographs	3-10	Main Board View - 1 (For Model IB9387-EH)
Photographs	3-11	Main Board View - 2 (For Model IB9387-EH)
Photographs	3-12	Main Board View - 3 (For Model IB9387-H)
Photographs	3-13	Main Board View - 4 (For Model IB9387-H)
Photographs	3-14	IO Board View - 1
Photographs	3-15	IO Board View - 2
Photographs	3-16	Overall View 1 (Models IB9387-EHT, IB9387-HT and IB9387-LPR)
Photographs	3-17	Overall View 2 (Models IB9387-EHT, IB9387-HT and IB9387-LPR)
Photographs	3-18	Internal View (Models IB9387-EHT and IB9387-HT)
Photographs	3-19	Camera Lens Side View (For Model IB9387-EHT)
Photographs	3-20	LED board View 1(For Model IB9387-EHT, IB9387-HT and IB9387-LPR)
Photographs	3-21	LED board View 2 (For Model IB9387-EHT, IB9387-HT and IB9387-LPR)
Diagrams	4-01	Enclosure Dimension
Diagrams	4-02	Lens cover Dimension
Diagrams	4-03	O-ring Dimension - 1 (Between metal front cover and body enclosure)
Diagrams	4-04	O-ring Dimension - 2 (Between screw and body enclosure)
Diagrams	4-05	O-ring Dimension - 3 (For Hole of cable)
Diagrams	4-06	Signal transformer (T1) Spec.
Diagrams	4-07	Model IB9387-HT Enclosure Construction
Diagrams	4-08	Model IB9387-HT Junction
Diagrams	4-09	Model IB9387-HT Rubber.
Diagrams	4-10	Model IB9387-HT Assembly Front Cover
Manuals	6-01	Installation instruction

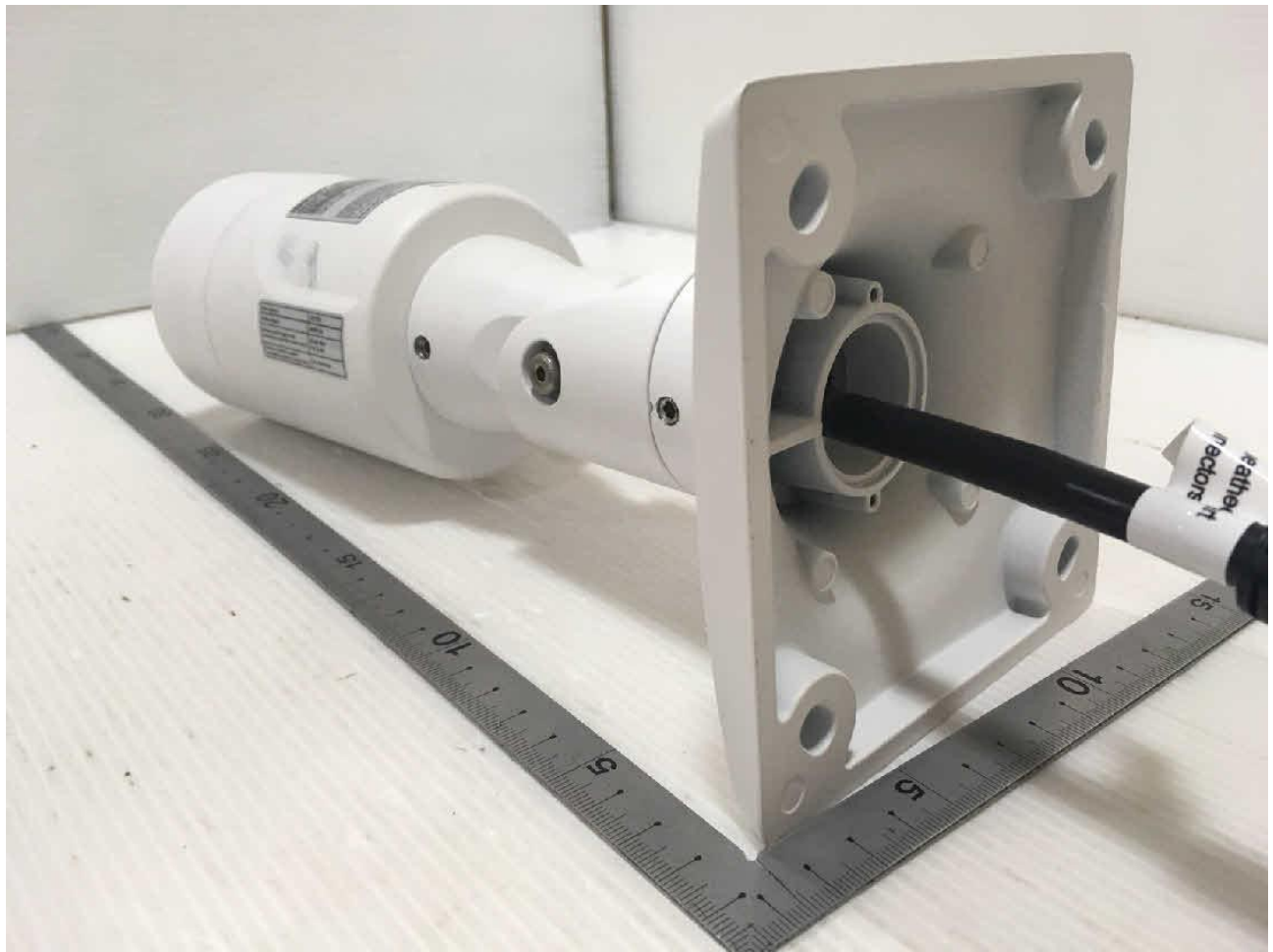
Issue Date: 2019-01-11
2019-07-29

Page 10 of 11

Report Reference #

E324690-A148-UL

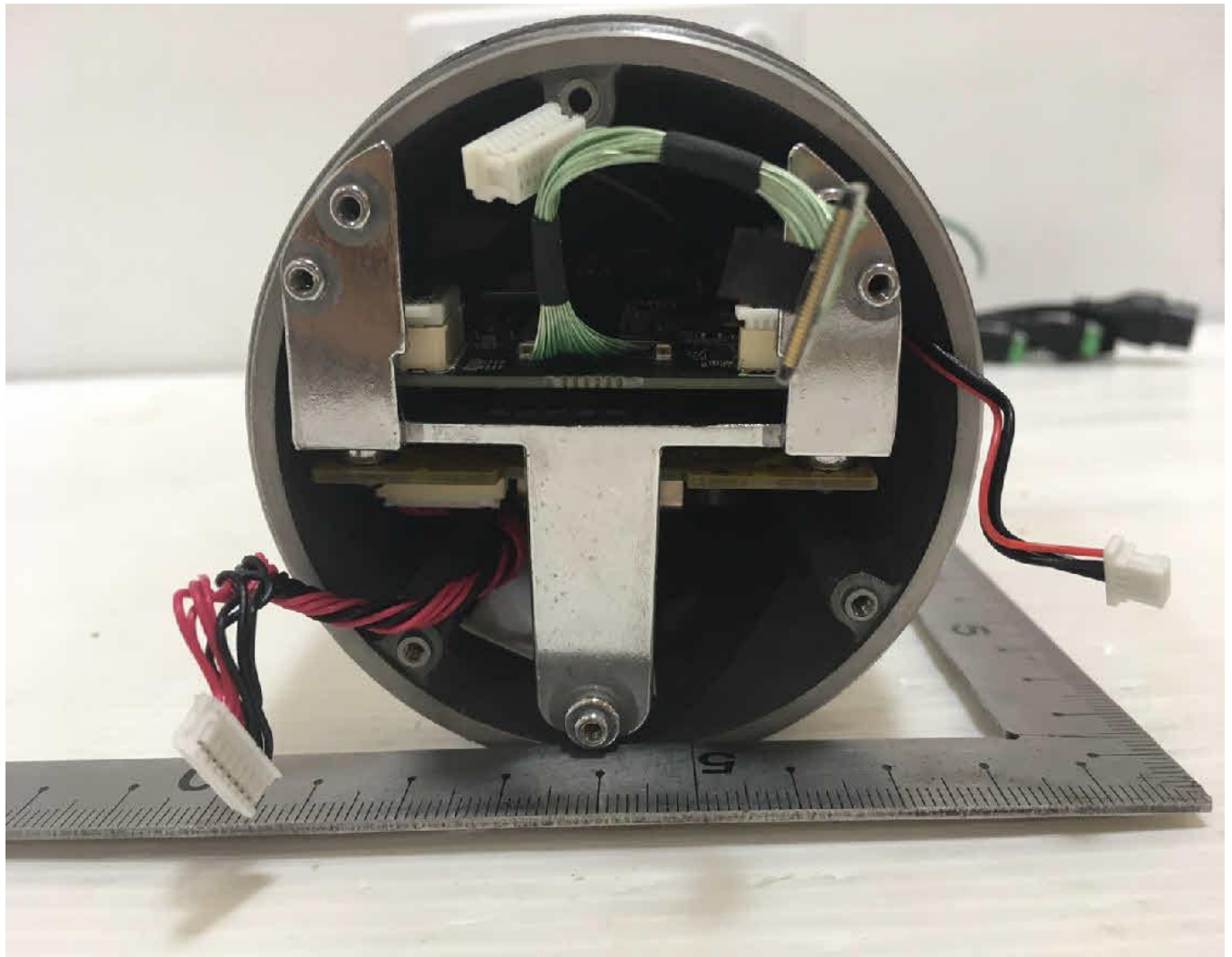
Miscellaneous	7-01	Model Differences
---------------	------	-------------------

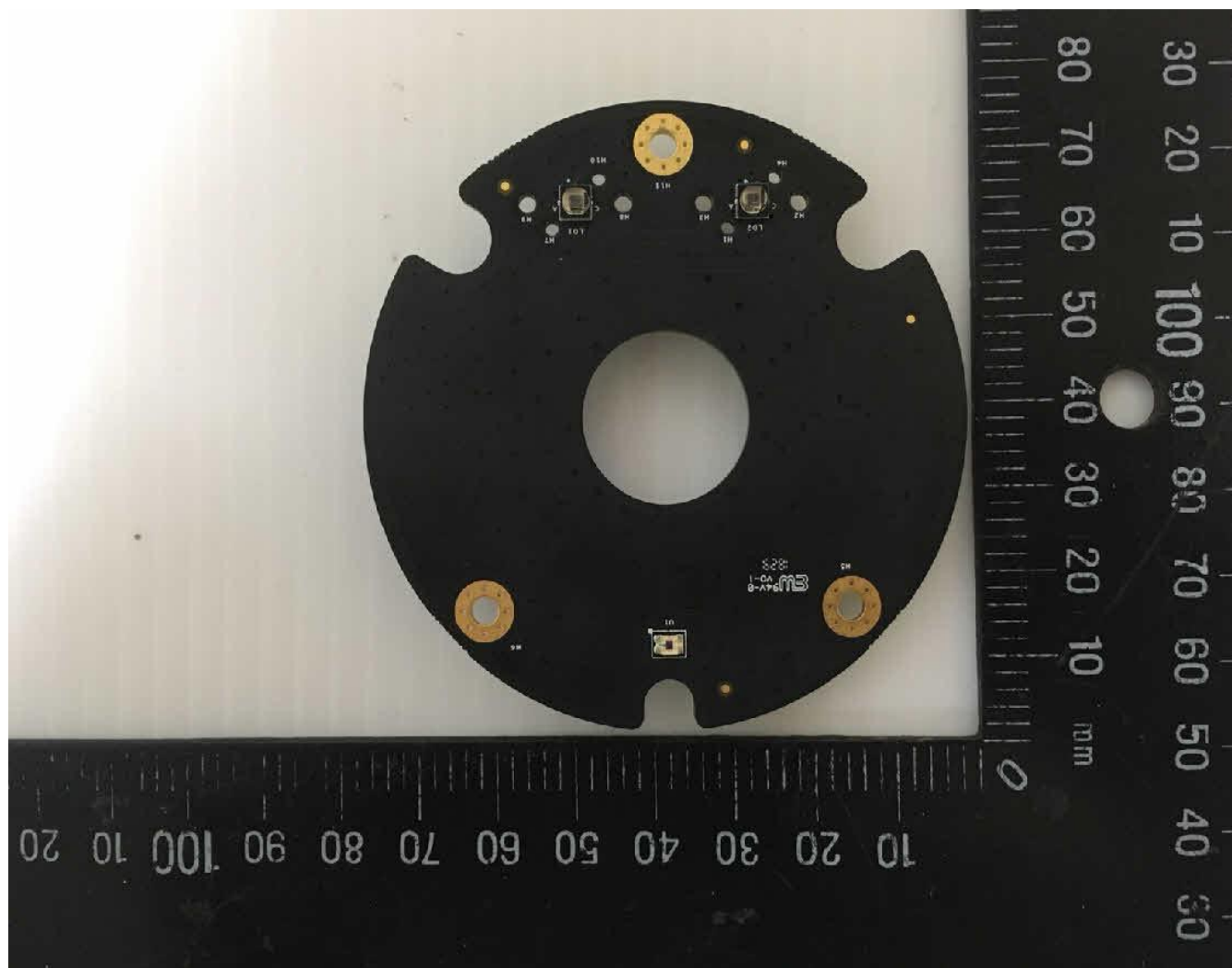


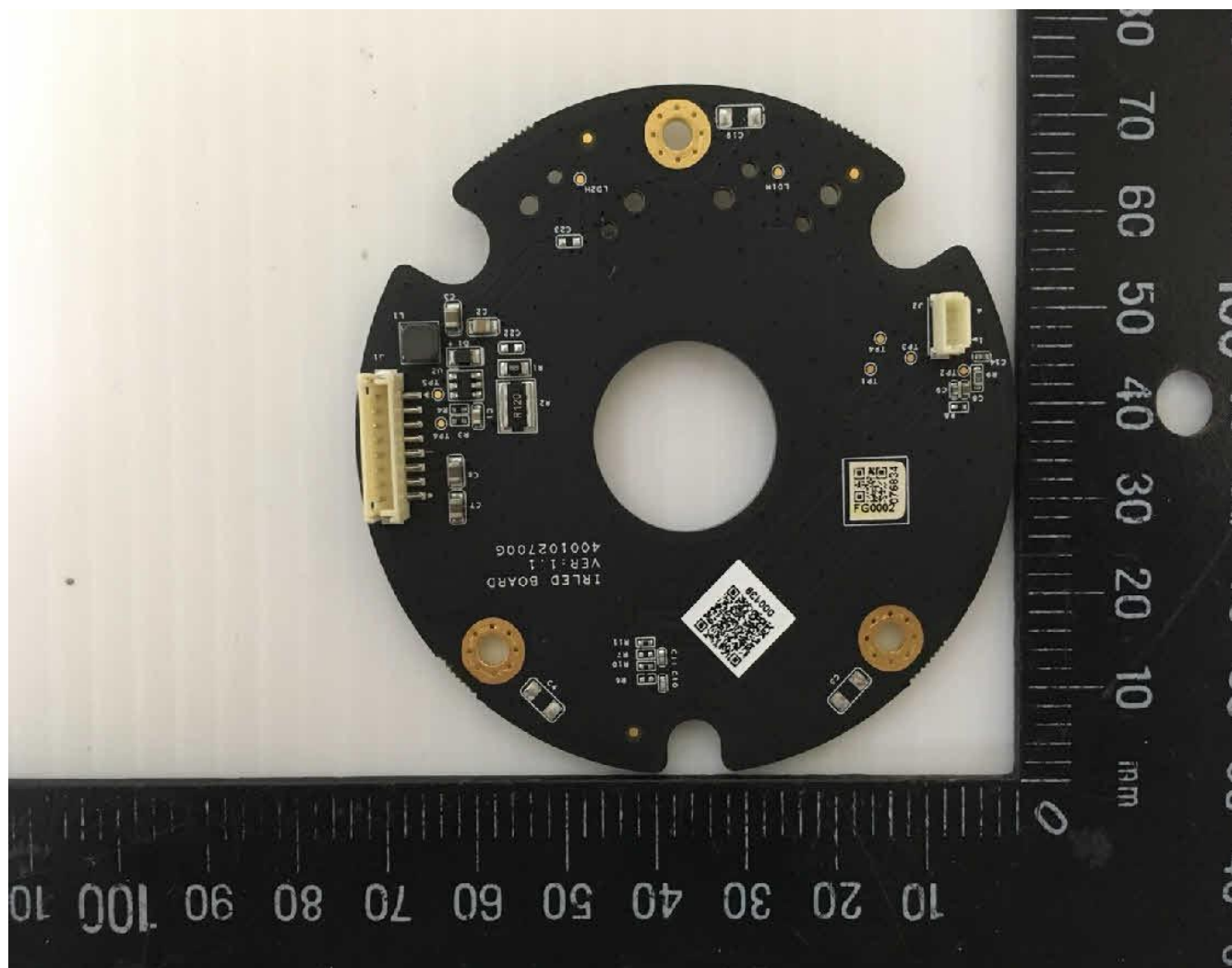


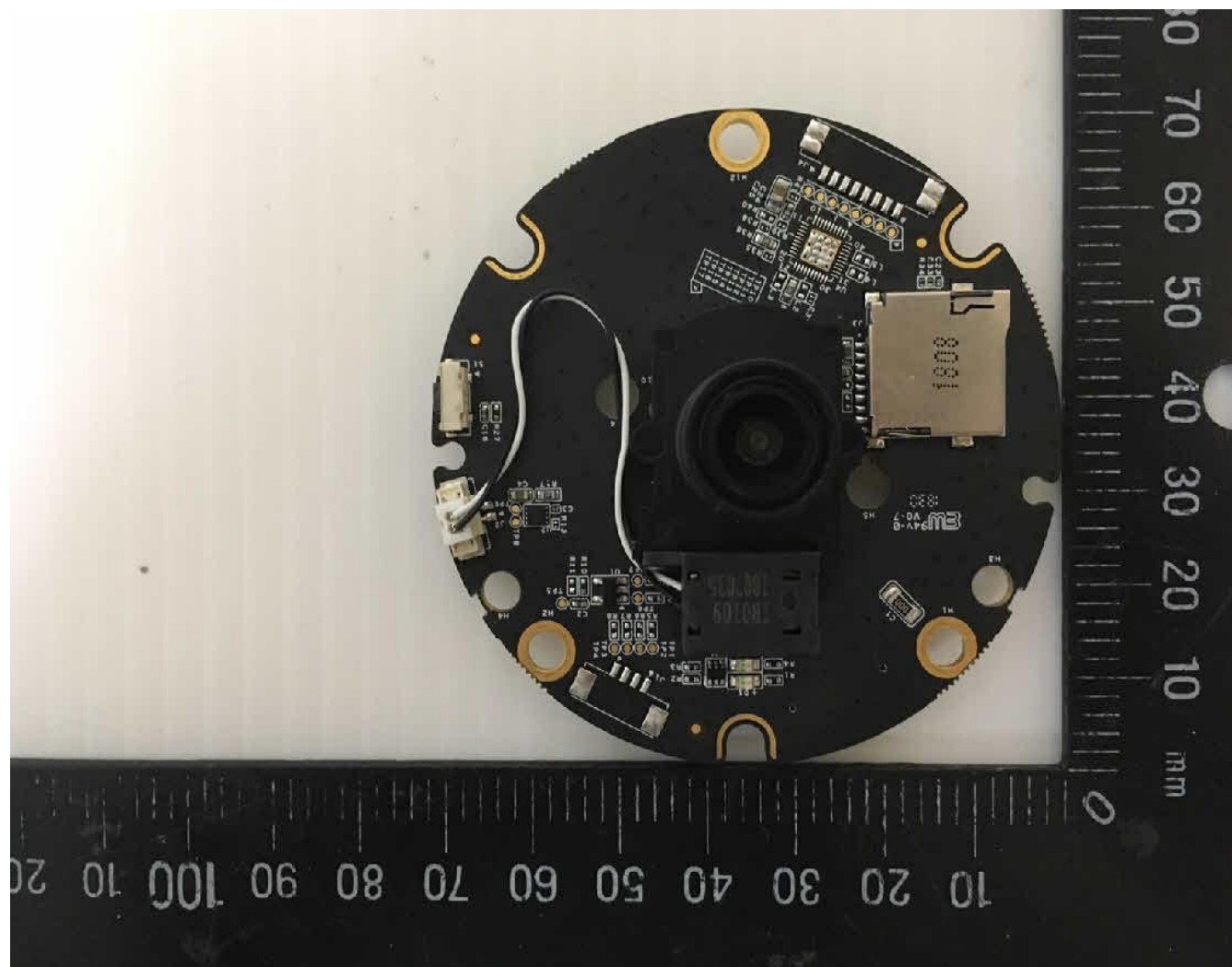


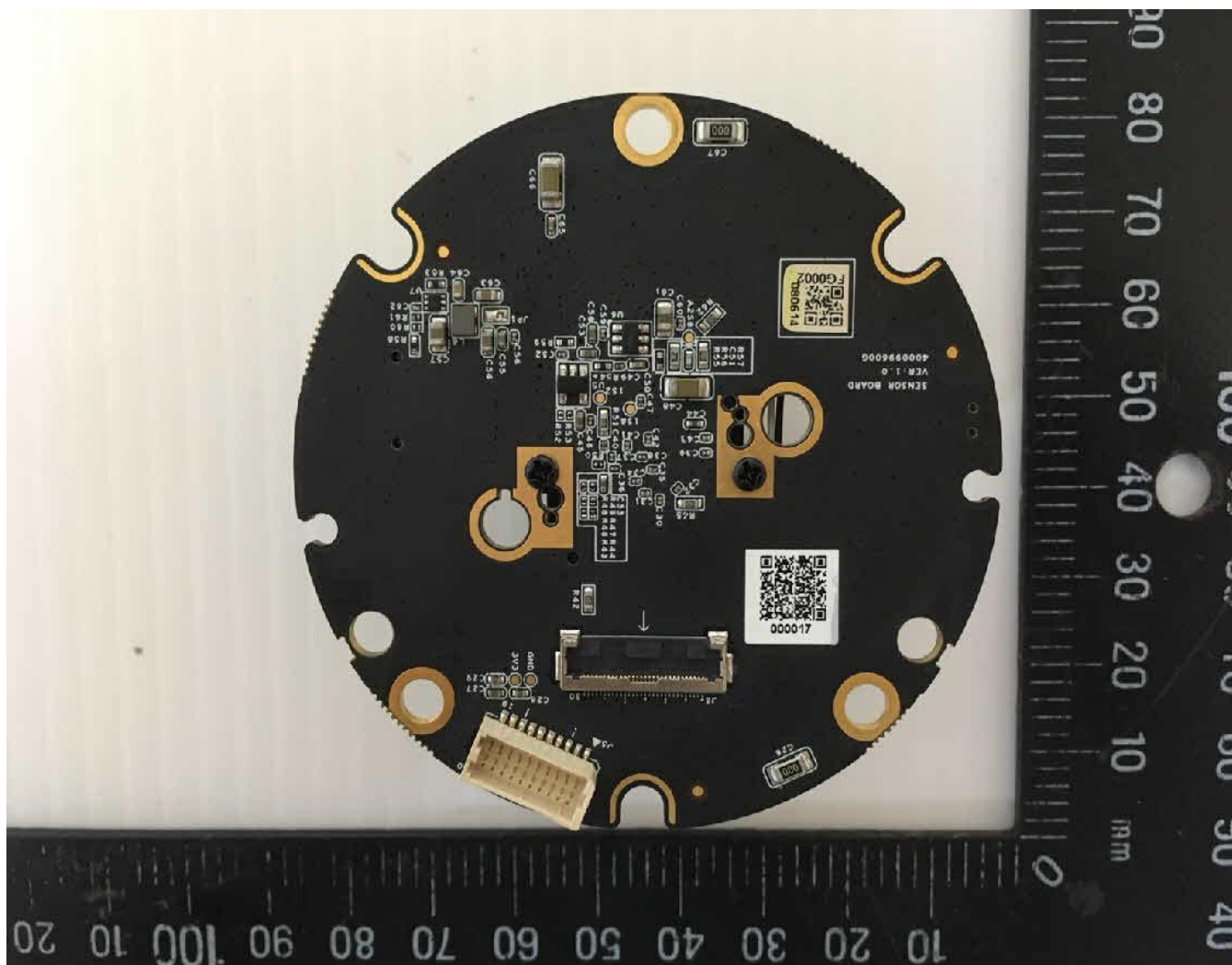


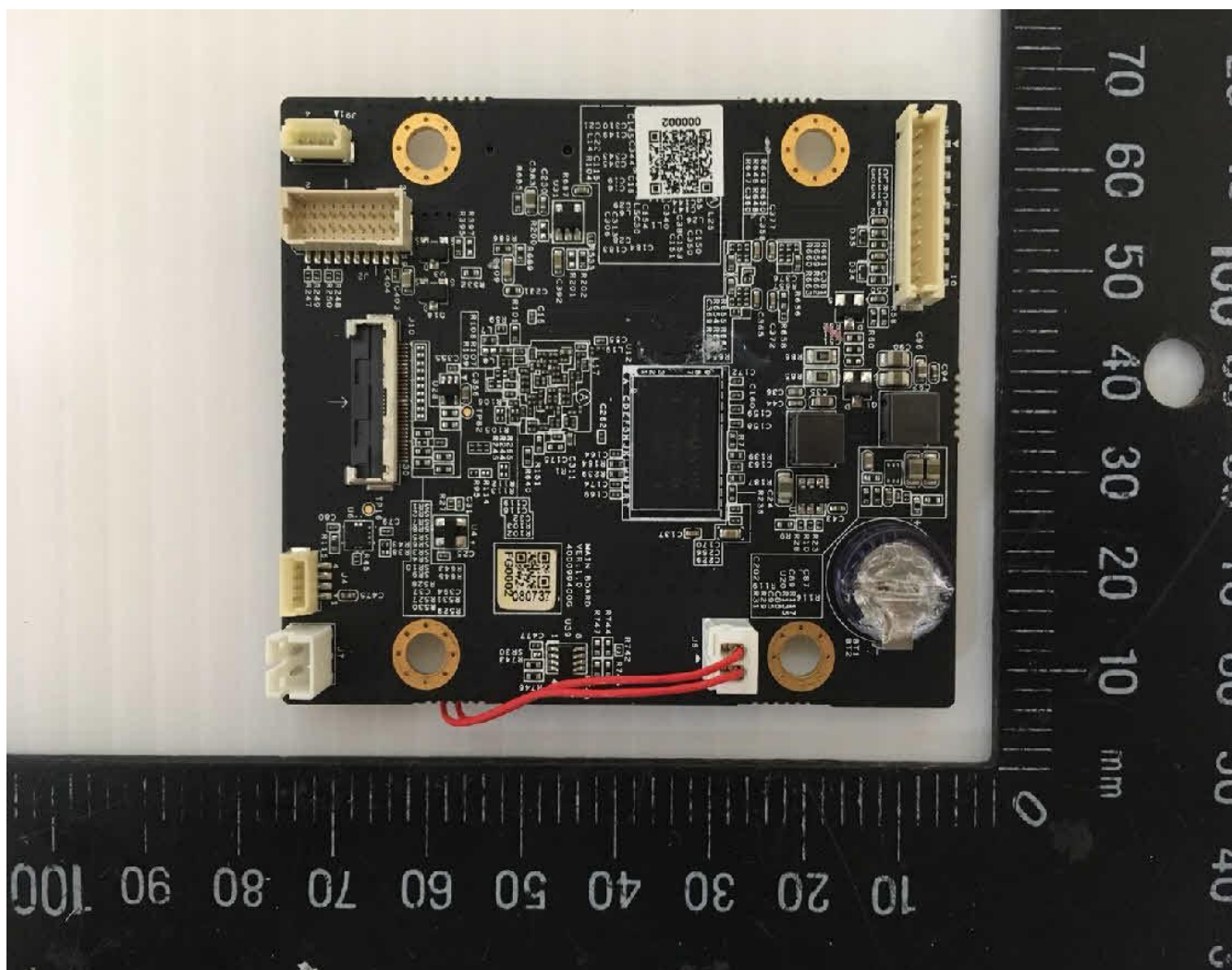


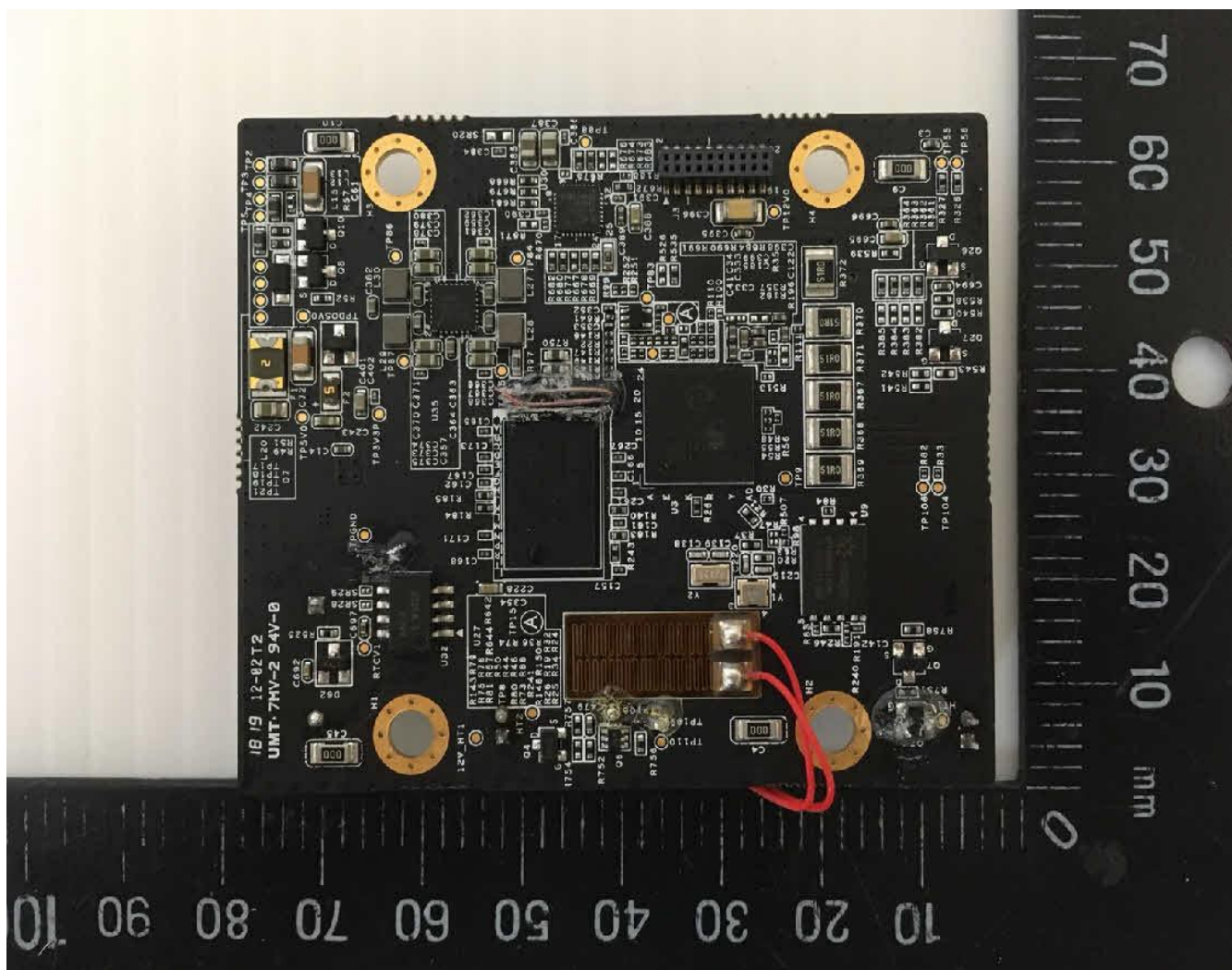


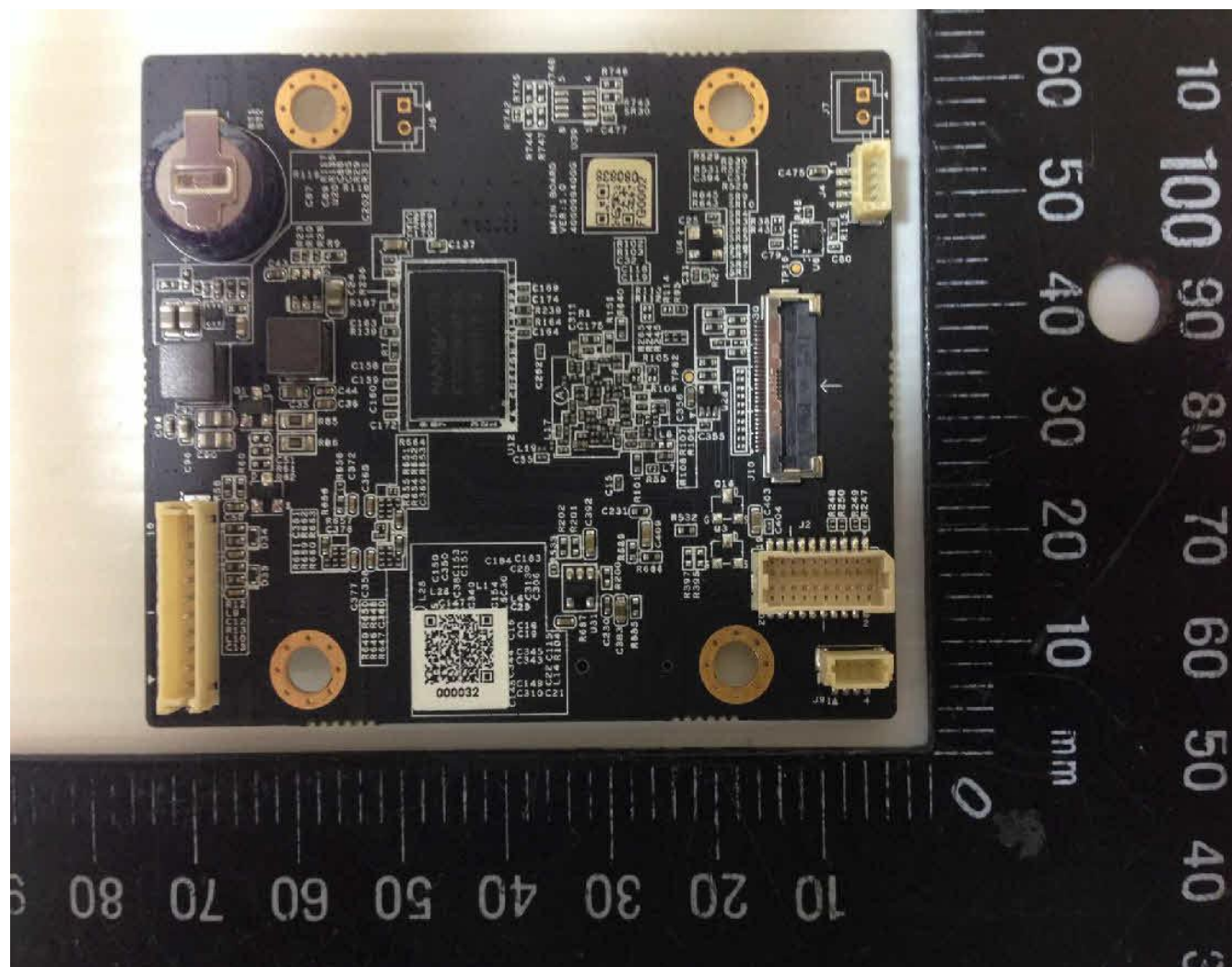


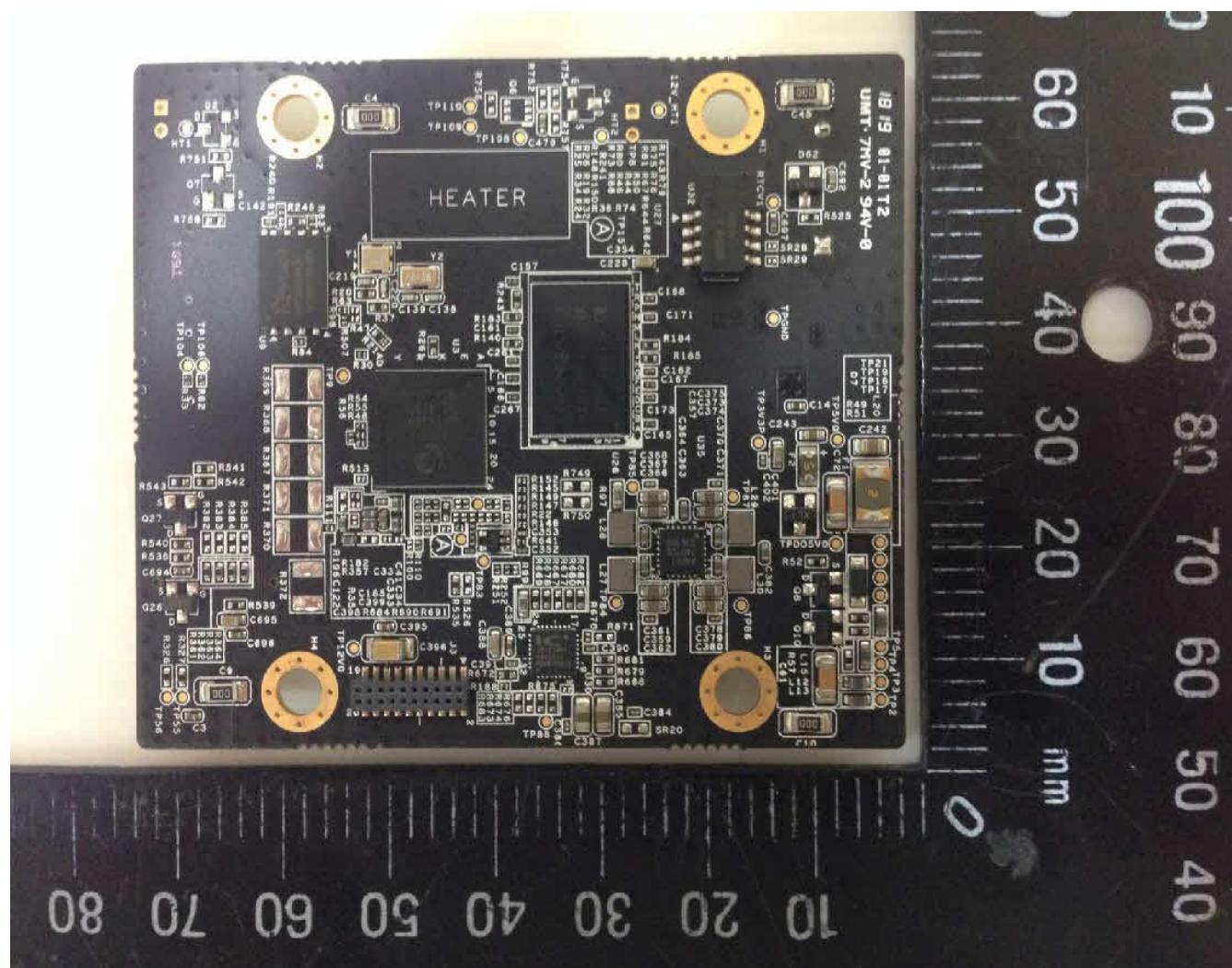


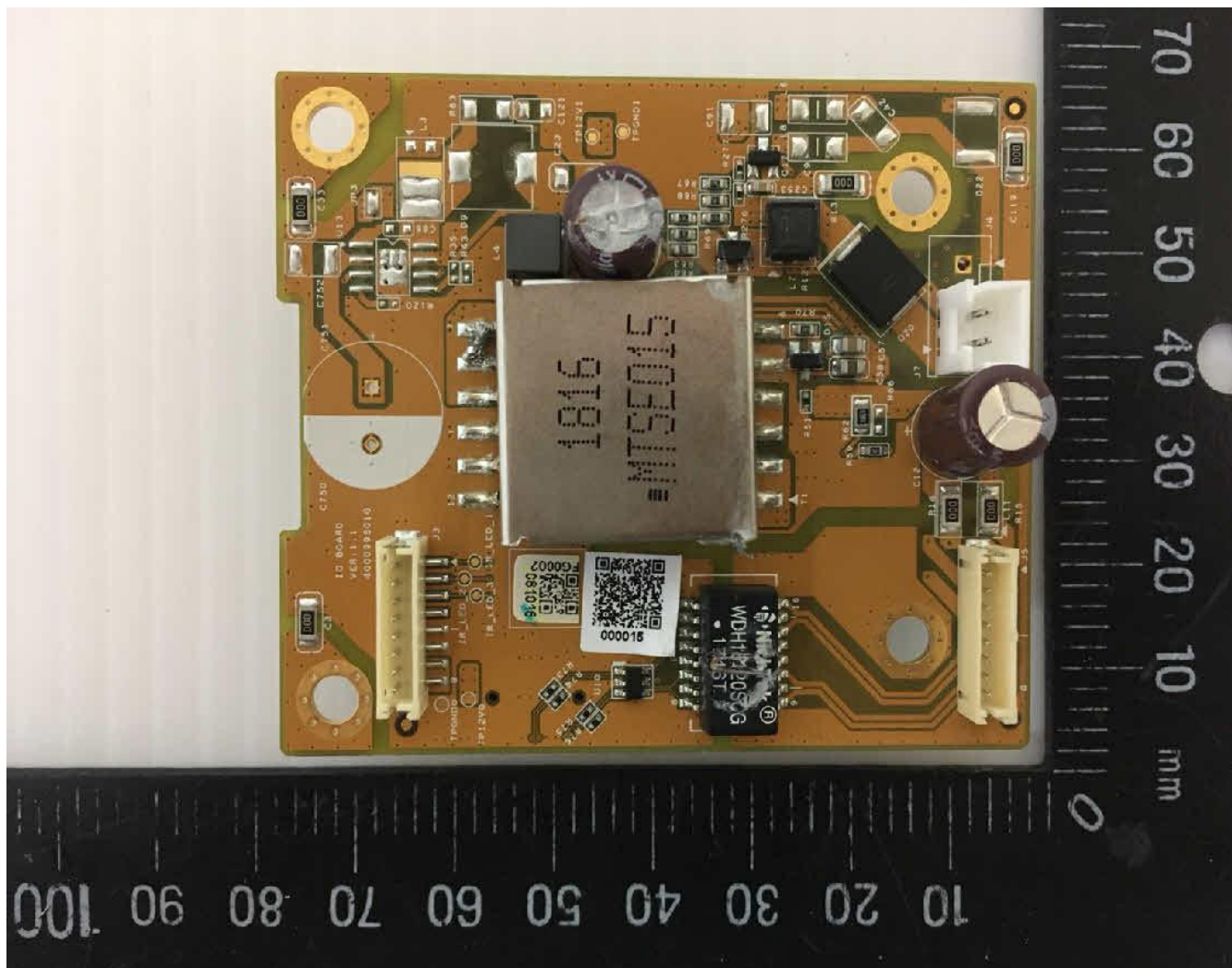


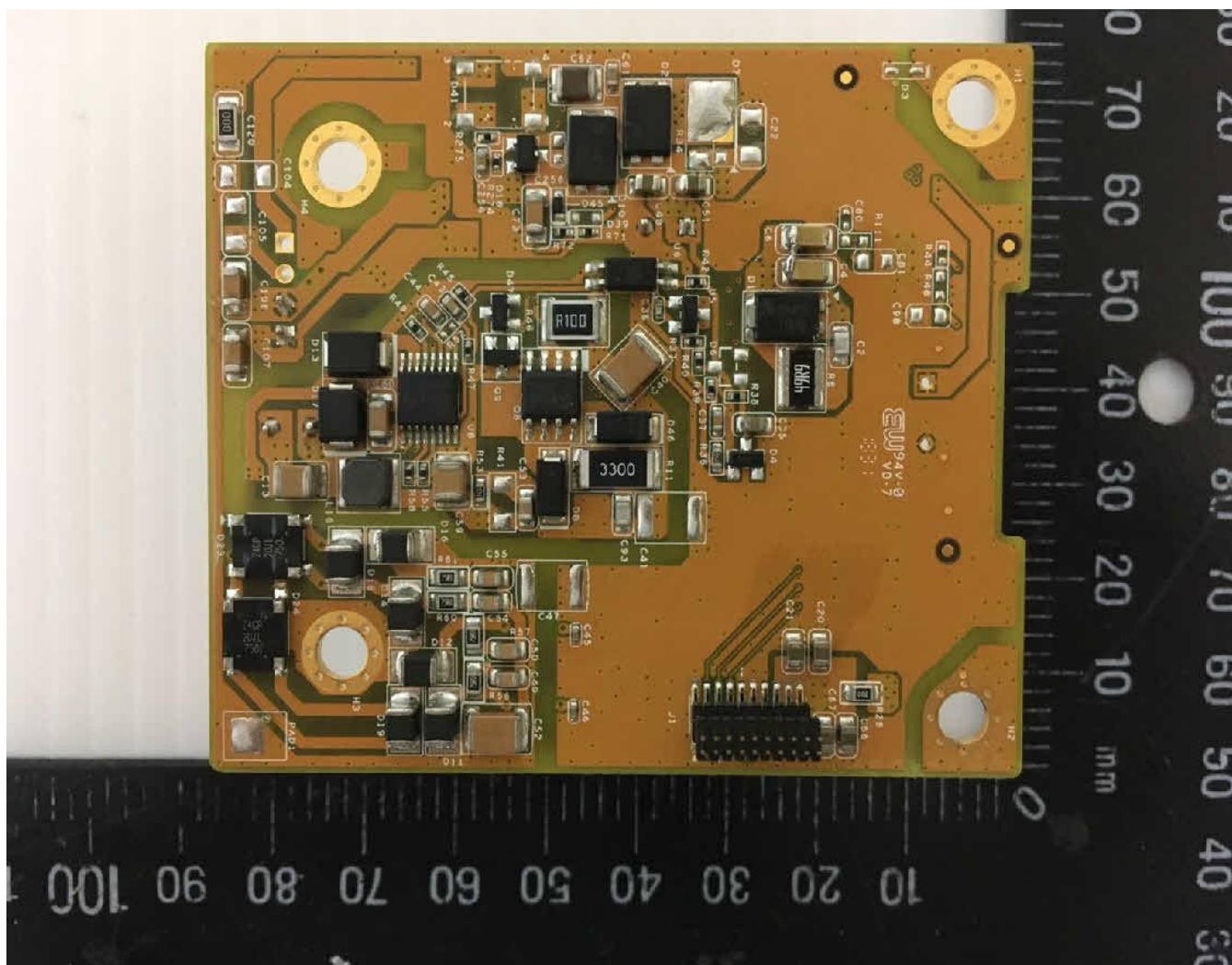


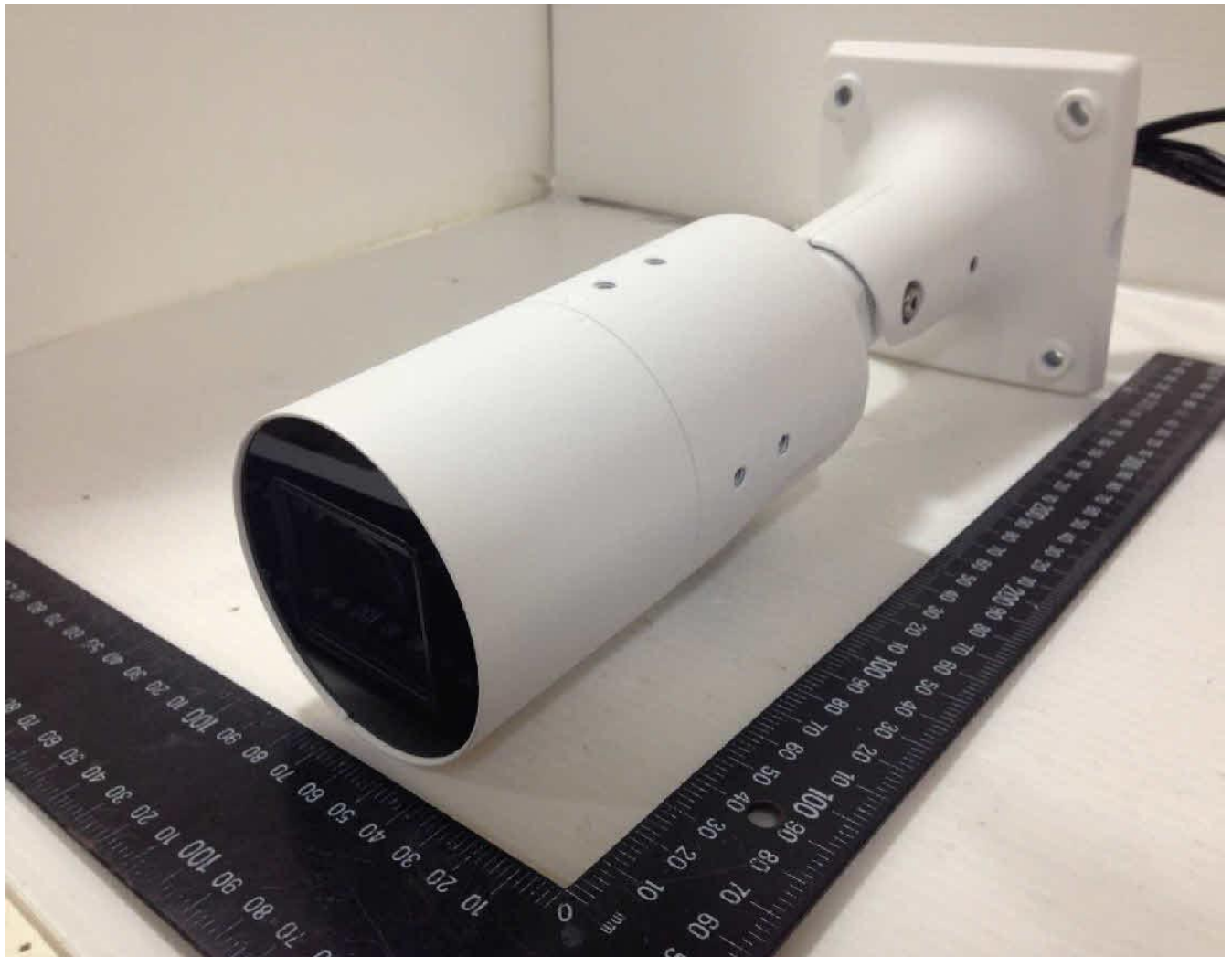


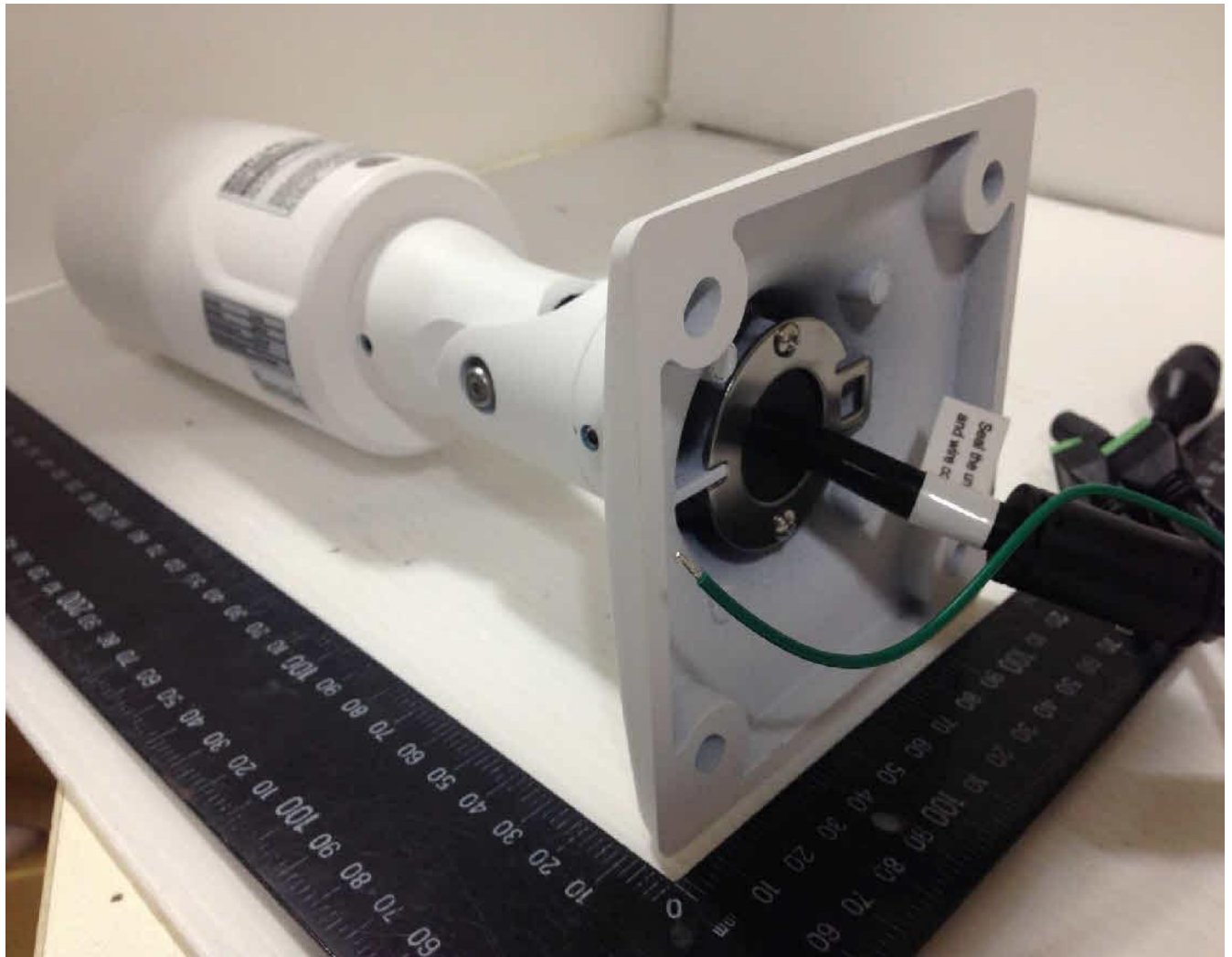




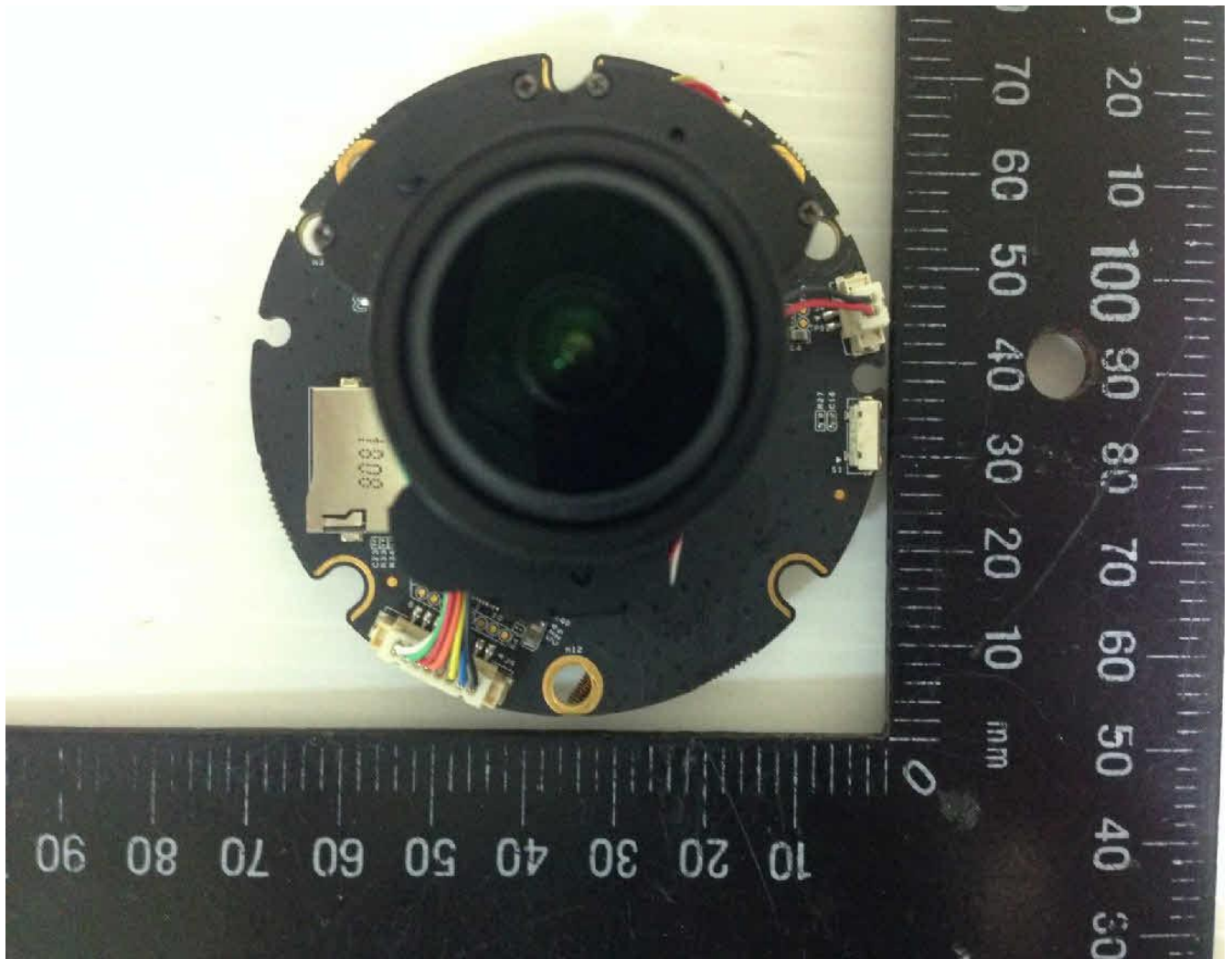


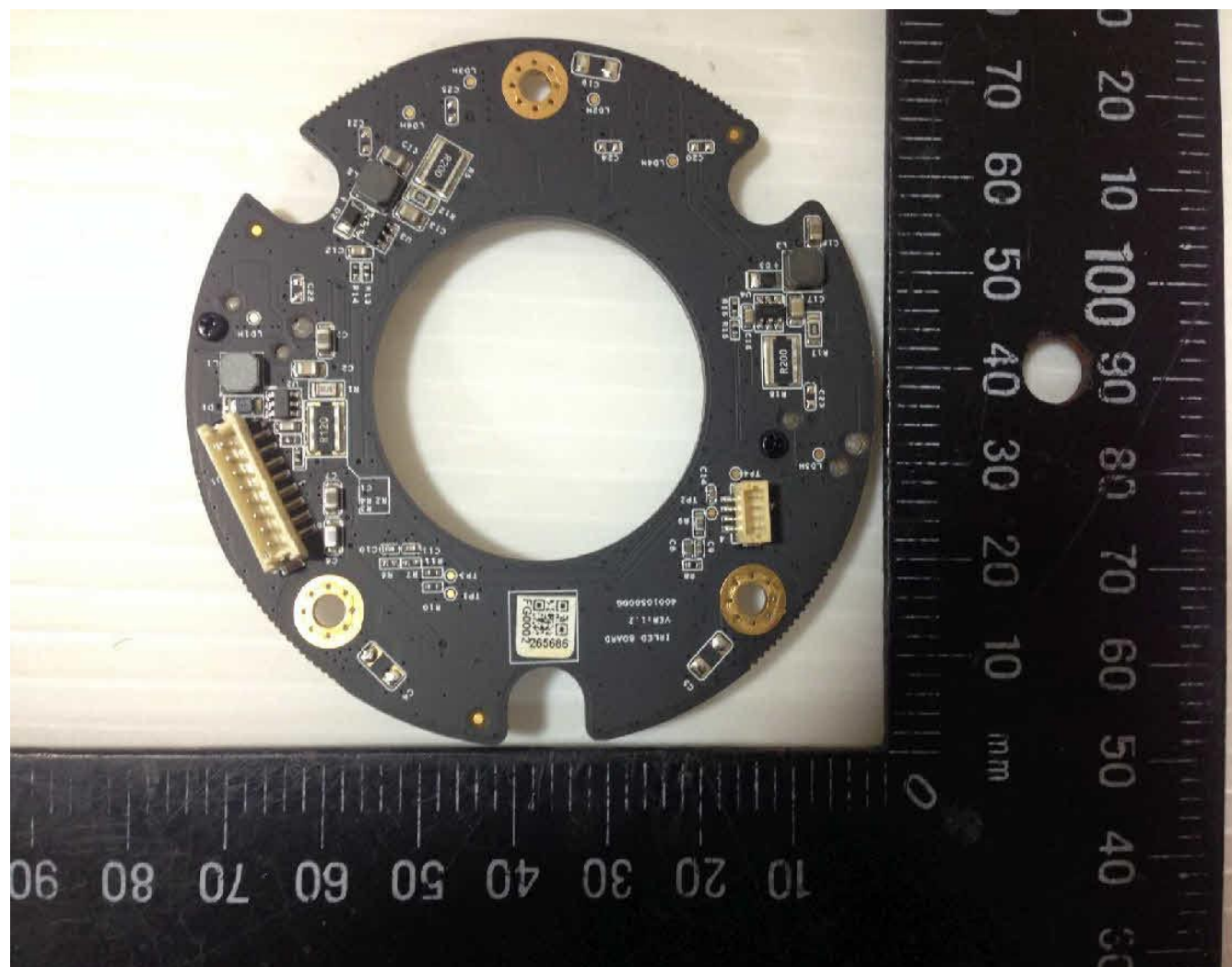


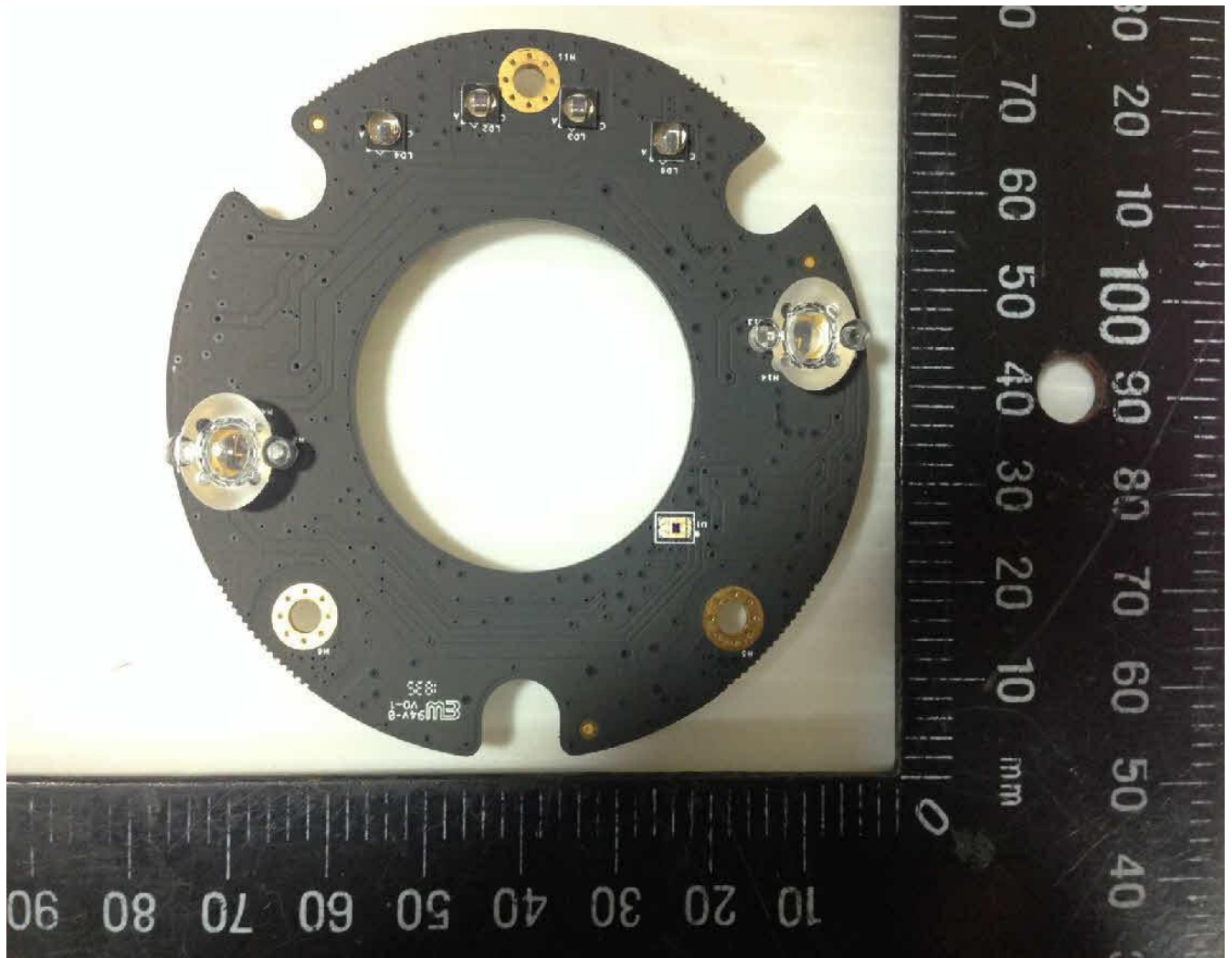


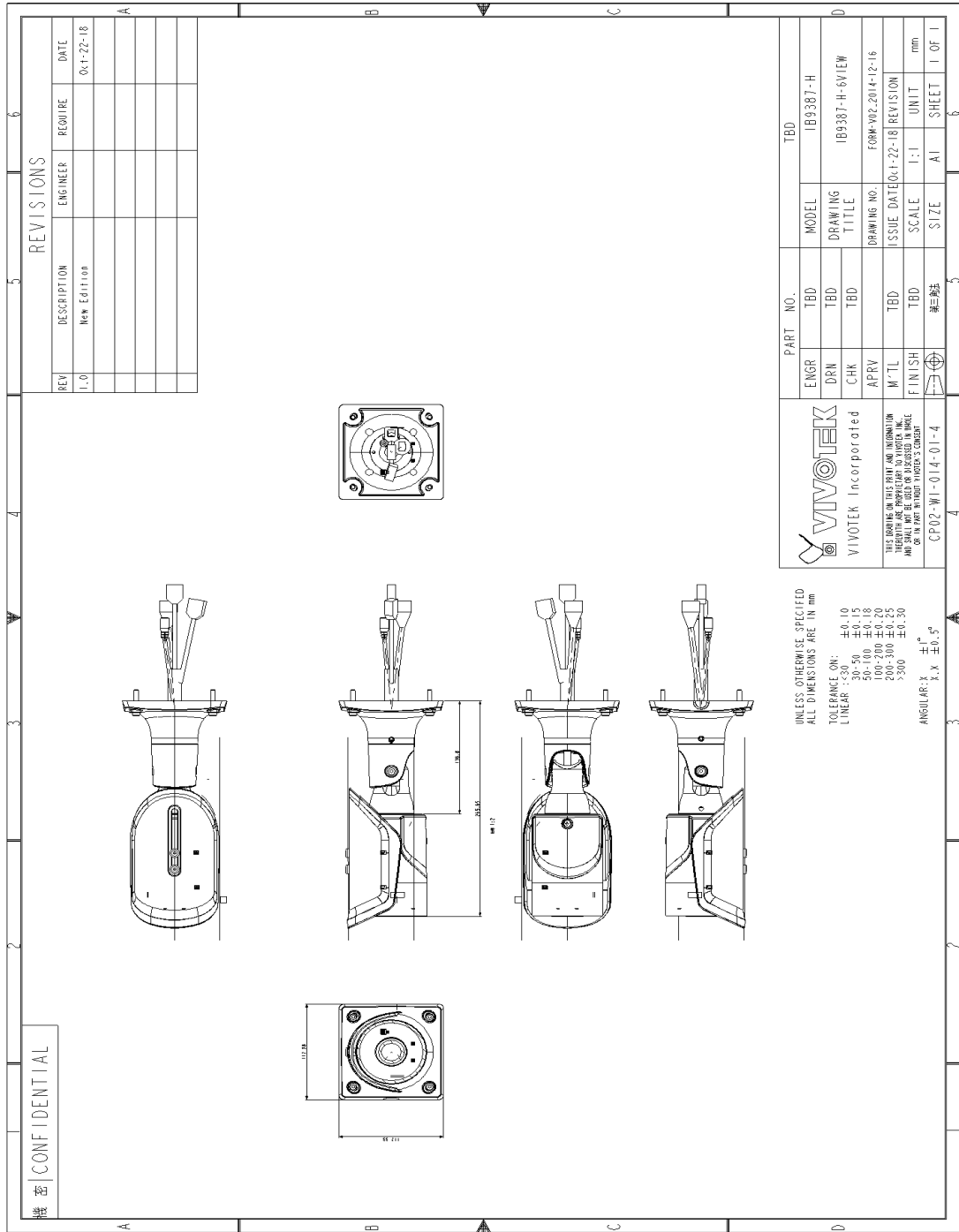


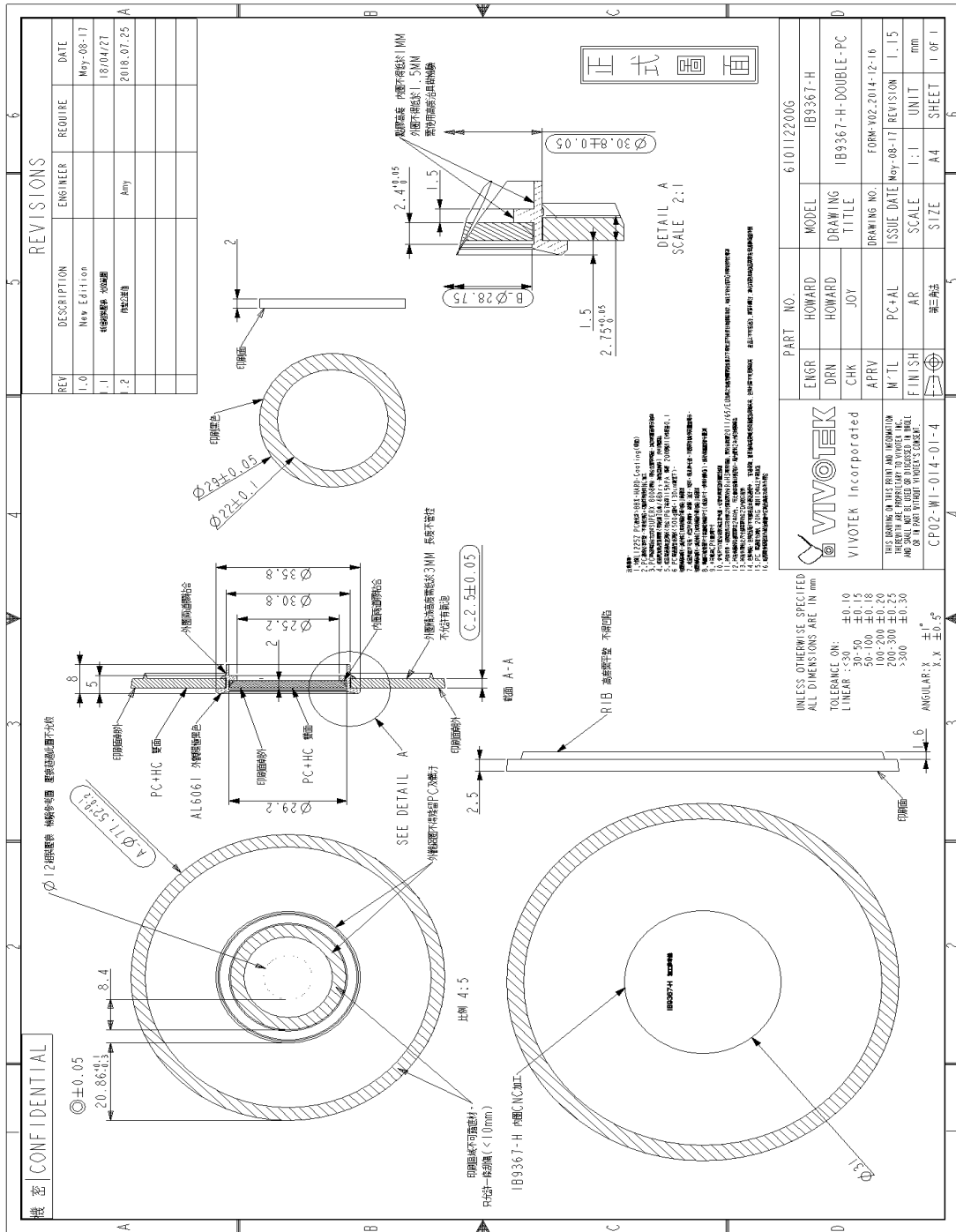












REVISIONS

REV	DESCRIPTION	ENGINEER	REQUIRE	DATE
1.0	New Edition			May-08-17
1.1	增加規格、增加圖			18/04/27
1.2	修改規格	Any		2018.07.25

UNLESS OTHERWISE SPECIFIED
ALL DIMENSIONS ARE IN mm
TOLERANCE ON:
LINEAR: ± 0.10
30-50 ± 0.15
50-100 ± 0.18
100-200 ± 0.20
200-300 ± 0.30
>300 ± 0.50
ANGULAR: $\pm 1^\circ$
F.X. $\pm 0.5^\circ$

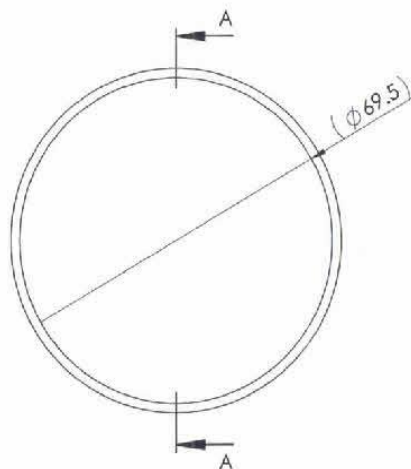
VIVOTEK
VIVOTEK Incorporated
THIS DRAWING IS THE PROPERTY AND INFORMATION OF VIVOTEK INCORPORATED. IT IS NOT TO BE REPRODUCED OR TRANSMITTED IN ANY FORM OR BY ANY MEANS WITHOUT VIVOTEK'S CONSENT.
CP02-WI-014-01-4
第三版

PART NO. 6101122006
MODEL IB9367-H
DRAWING TITLE IB9367-H-DOUBLE-PC
DRAWING NO. FORM-V02.2014-12-16
ISSUE DATE May-08-17
REVISION 1.15
SCALE 1:1
UNIT mm
SIZE A4
SHEET 1 OF 1

ENG'N HOWARD
DRN HOWARD
CHK JOY
APRV
M'TL PC+AL
FINISH AR
SCALE 1:1
UNIT mm
SIZE A4
SHEET 1 OF 1

FORM V02.2014-12-16
VIVOTEK INCORPORATED
10000 W. ALHAMBRA BLVD., SUITE 1000
ALHAMBRA, CA 91801-3100, U.S.A.
TEL: (626) 442-1200 FAX: (626) 442-1201
WWW.VIVOTEK.COM

編號	修改內容	更改者	日期
△			
△			
△			



剖面圖 A-A



NOTE:

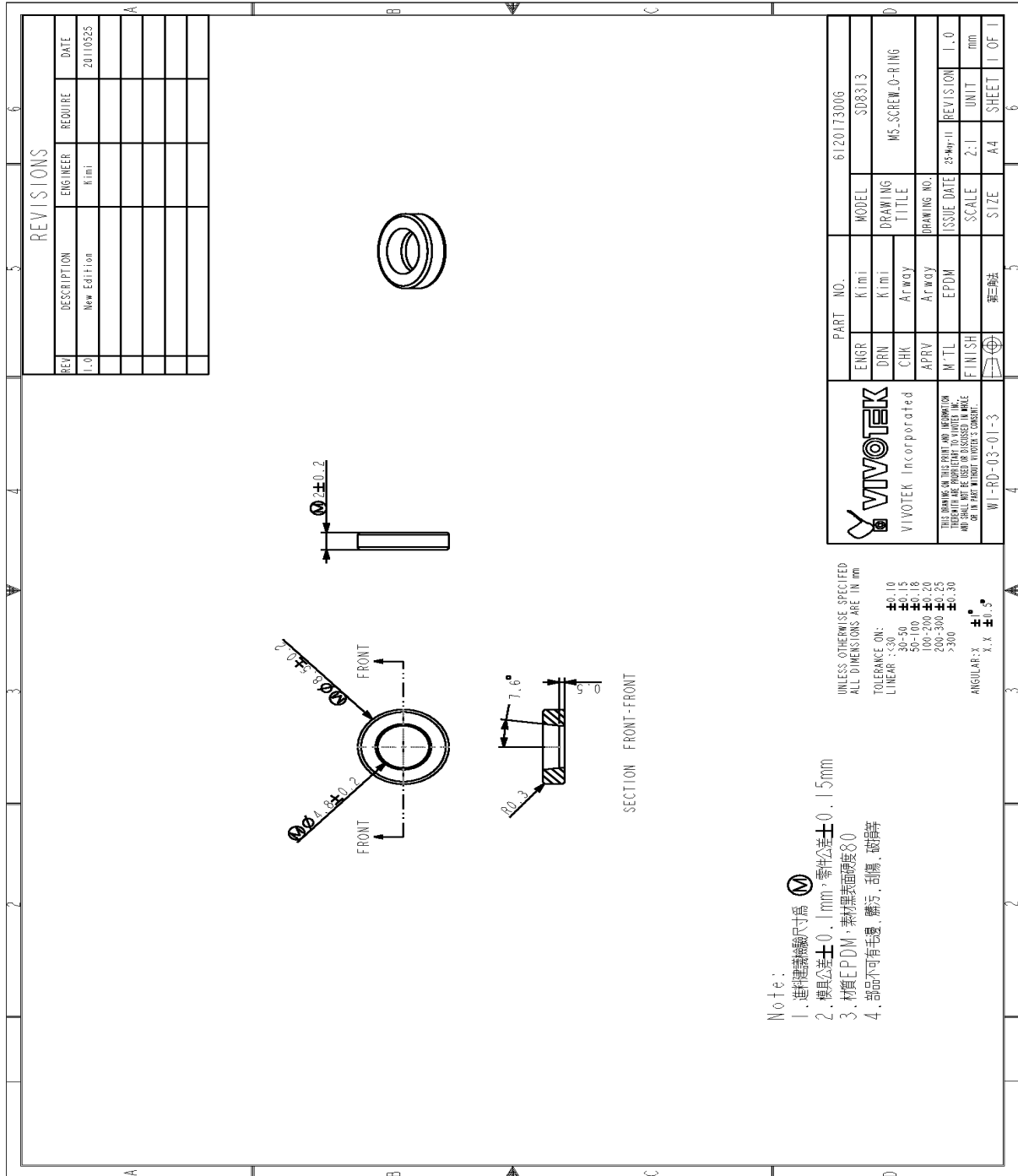
1. 材質:TSE-2186U, 硬度55±5°
2. 規格:S70
3. () 參考尺寸以配合組裝為主要考量, 必要需時額外實配檢驗。

本標準加工尺寸公差	公差	材料	砂膠	鋼號	WACAHO31JGA	校對	研發	核准	附錄
尺寸範圍	公差								
<30	±0.1	表面處理	成型法						
30-50	±0.15				S70				
50.1-100	±0.2	單位	mm	品名	○型環	繪圖	柯毓珉	日期	2017/07/18
100.1-200	±0.25								
200.1-300	±0.3								
>300	±0.5								

MASSLOAD
SHI JING CAST CO., LTD.

財榮壓鑄股份有限公司

TEL: 886-4-26830880
FAX: 886-4-26831149



Note:

1. 進料檢驗尺寸為 \varnothing
2. 模具公差 ± 0.1 mm, 零件公差 ± 0.15 mm
3. 材質 EPDM, 表面硬度 80
4. 部品不可有毛邊, 油污, 刮傷, 破損等

UNLESS OTHERWISE SPECIFIED
ALL DIMENSIONS ARE IN mm

TOLENANCE ON:
LINEAR: ± 0.10
 ± 0.15
 ± 0.18
 ± 0.20
 ± 0.25
 ± 0.30

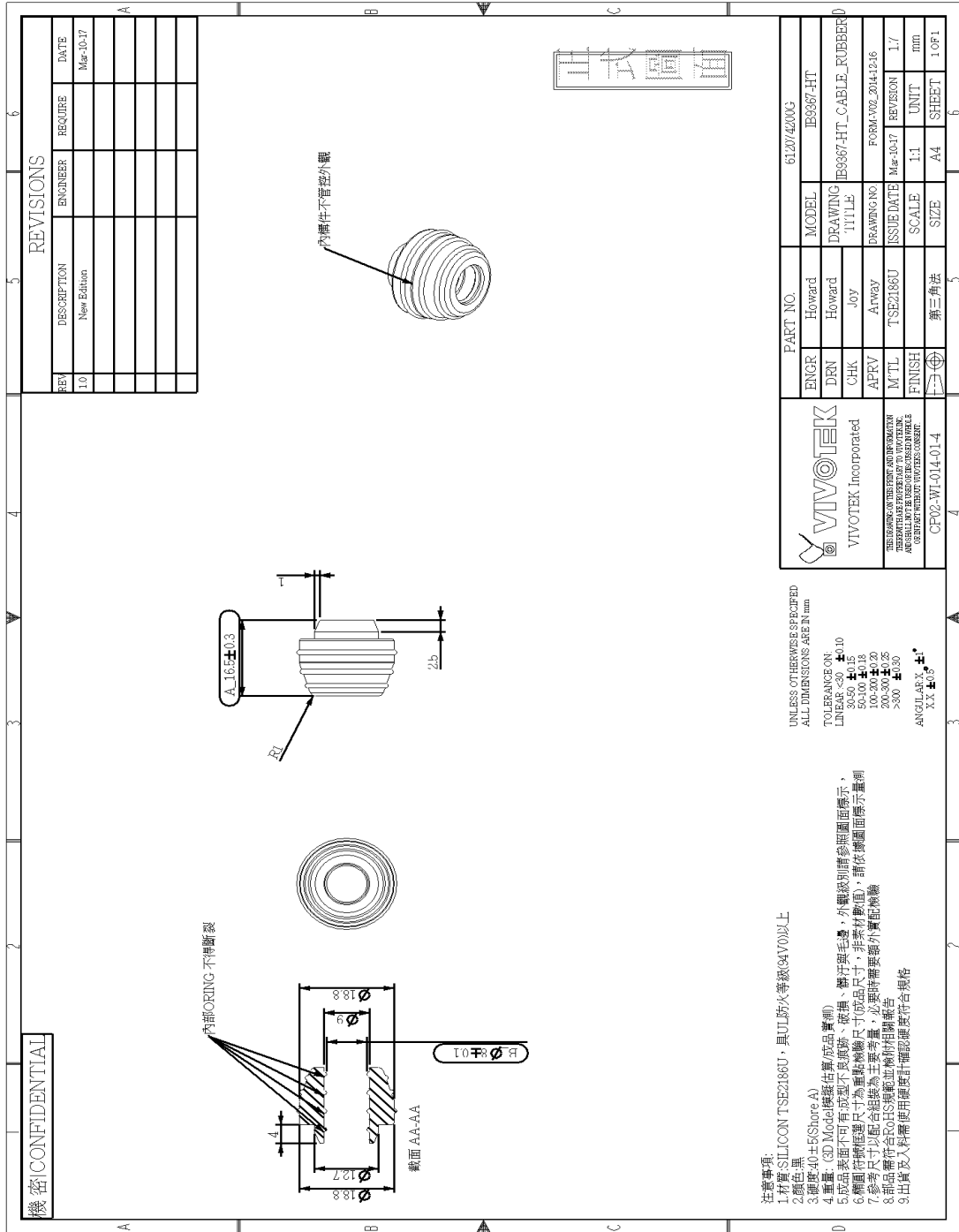
ANGULAR: $\pm 1.5'$
 $\pm 1.5'$

VIVOOTEK Incorporated
VIVOOTEK INC. PROPERTY TO VIVOOTEK INC.
THIS DRAWING IN THIS PRINT AND INFORMATION
HEREON IS THE PROPERTY OF VIVOOTEK INC.
AND SHALL NOT BE USED OR DISCLOSED IN WHOLE
OR IN PART WITHOUT VIVOOTEK'S CONSENT.

WI-RD-03-01-3

ENGR	Kimi	MODEL	612017300G
DRN	Kimi	DRAWING TITLE	S08313
CHK	Arway	DRAWING NO.	MS-SCREW-O-RING
APRV	Arway	ISSUE DATE	25-Nov-11
M'TL	EPDM	SCALE	2:1
F.I.N.I.S.H.		SIZE	A4
		SHEET	1 OF 1

REVISIONS			
REV	DESCRIPTION	ENGINEER	DATE
1.0	New Edition	Kimi	20110525



REVISIONS			
REV.	DESCRIPTION	ENGINEER	DATE
1.0	New Edition.		Mar-10-17

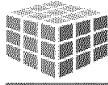
 VIVOTEK Incorporated		PART NO. 6120/4200G	
ENGR	Howard	MODEL	IB8867-HT
DEN	Howard	DRAWING	IB8867-HT_CABLE_RUBBER
CHK	Joy	TITLE	
APRV	Arway	DRAWING NO.	FORM-V02_2014-12-16
M/TL	TSE2186U	ISSUE DATE	Mar-10-17
FINISH		REVISION	1/7
		SCALE	1:1
		UNIT	mm
		SIZE	A4
		SHEET	1 OF 1

UNLESS OTHERWISE SPECIFIED
ALL DIMENSIONS ARE IN mm.

TOLERANCE ON:
 LINEAR <30 ±0.10
 30-100 ±0.15
 100-300 ±0.20
 300-500 ±0.25
 >500 ±0.30

ANGULAR X ±°
 Y X ±°

- 注意事項:
- 1.材質: SILICON TSE2186U, 具UL防火等級(94V0)以上
 - 2.顏色: 黑
 - 3.硬度: 40±5(Shore A)
 - 4.重量: (3D Model) 檢驗後計算(成品 實測)
 - 5.成品表面不可有成型不良痕跡、破損、磨汗等毛邊, 外觀缺陷請參照圖面標示,
 - 6.精圓符標尺寸為重點檢驗尺寸(成品尺寸, 非素材數值), 請依圖面標示量測
 - 7.參考尺寸以配合組裝為主要考量, 必要時需要額外實配檢驗
 - 8.部品需符合ISOHS規範並備附相關報告
 - 9.出貨及入料需使用便於計測認證度符合規格



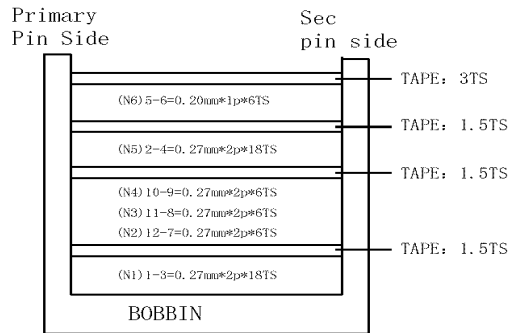
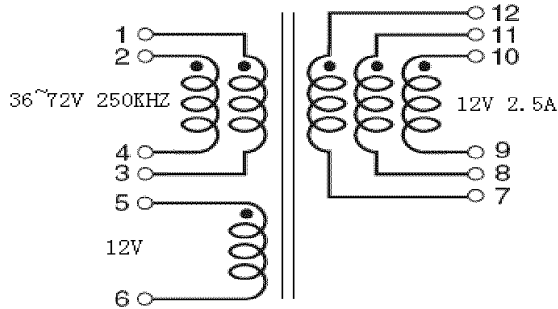
Flyback Transformer
P/N: MTSE015

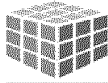
Feature

- Flyback Transformer
- RoHS Compliance Product
- Operating temperature range:-40° C to +125° C
- Storage temperature range:-25° C to +125° C

Electrical Specifications @ 25°C								
Part Number	Turns Ratio		OCL @250KHz 100mV	LL @250KHz 100mV	DCR			Hi-Pot (0.5mA/3S)
	PRI:SEC	PRI:Bias	1,2-3,4	1,2-3,4 (5-6-7-8-9-10-11-12short)	1,2-3,4	5-6	12,11,10-9,8,7	PRI-SEC
MTSE015	3:1±2%	3:1±2%	42uH±10%	0.6uH Max	61mΩ Max	195mΩ Max	15mΩ Max	1500 Vrms

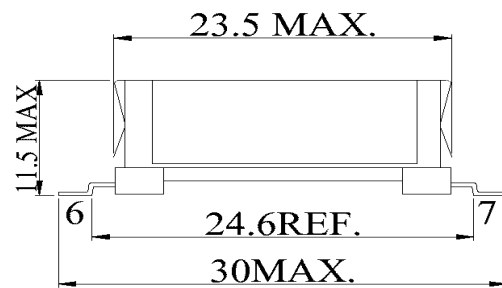
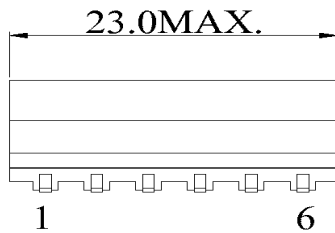
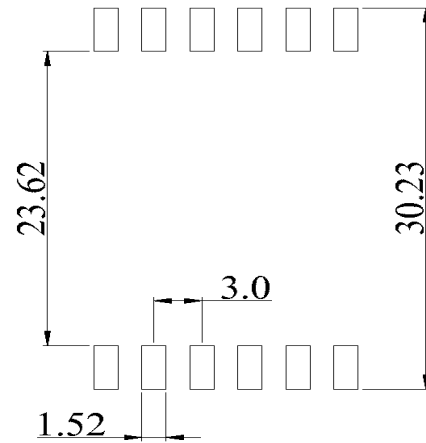
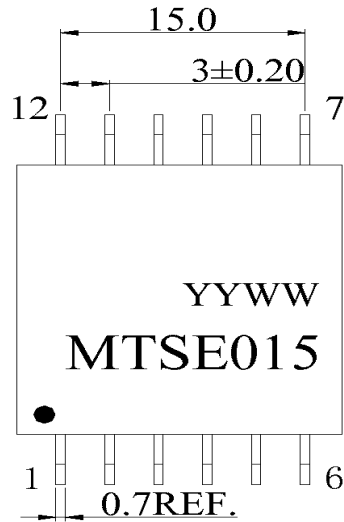
Schematic





Flyback Transformer
P/N: MTSE015

Mechanical



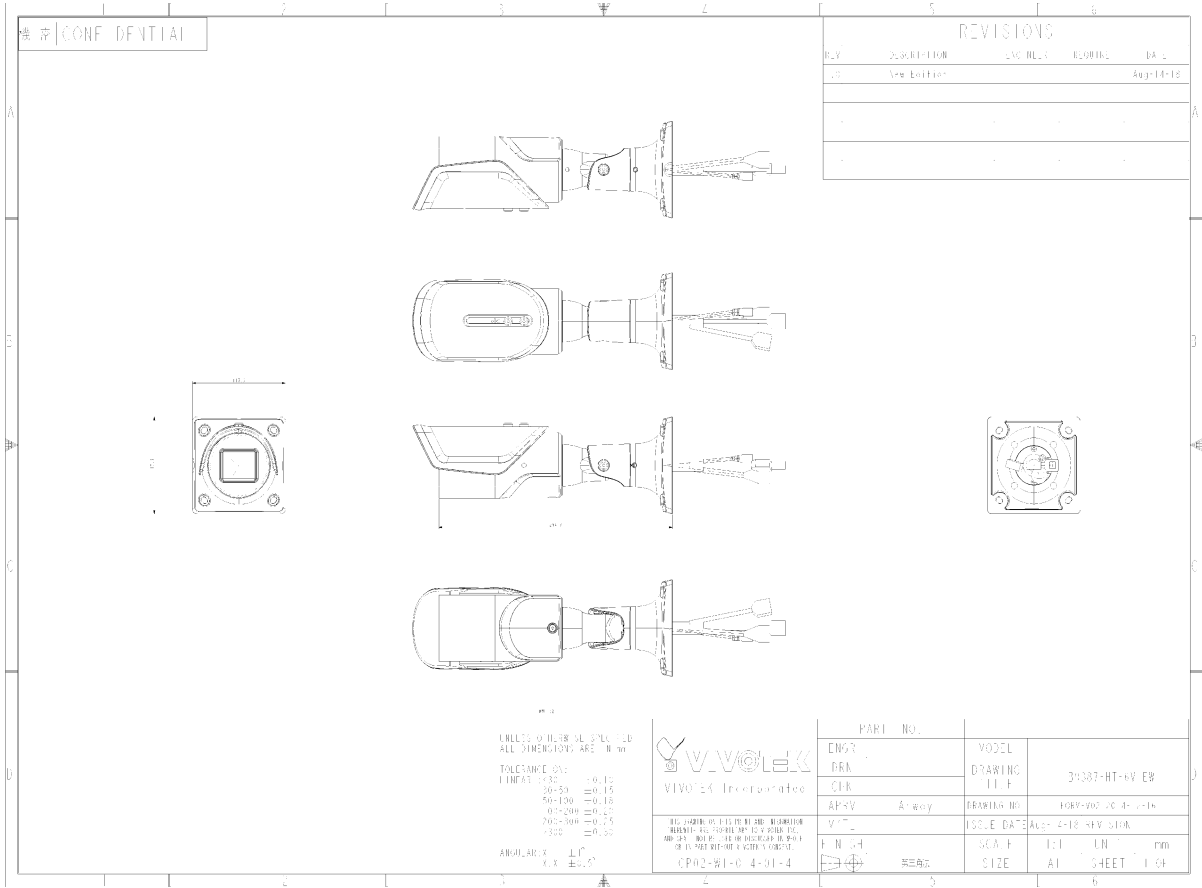
Dimension (mm) : Unless otherwise specified, all tolerances are ±0.25mm

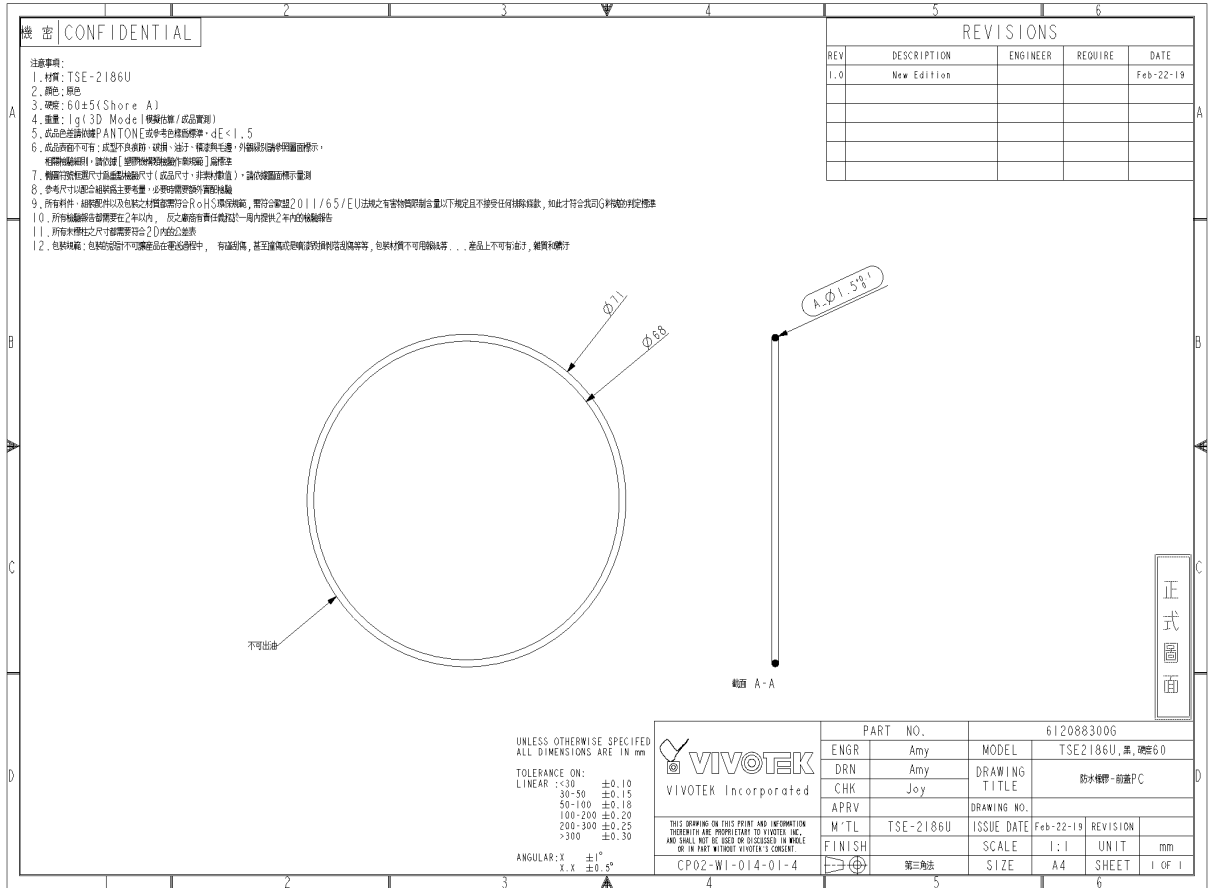


Flyback Transformer
P/N: MTSE015

MATERIALS LIST

NO	ITEM	MATERIAL NAME	SPEC	UL NO	SUPPLIER
1	WIRE	@*xUEW155 MW79-C	155°C	E234867	ZHUHAI SUNTEK WIRE CO LTD
		@*xUEW180 MW82-C	180°C	E234867	ZHUHAI SUNTEK WIRE CO LTD
2	WIRE	*UEW, QA-* MW79-C	155°C	E255839	SHING SHUN MAGNET WIRE (HUIZHOU) CO LTD
		UEW, QA- MW82-C	180°C	E255839	SHING SHUN MAGNET WIRE (HUIZHOU) CO LTD
3	WIRE	Polysol 155 MW79-C	155°C	E258243	ELEKTRISOLA HANGZHOU CO LTD
		Polysol 180 MW82-C	180°C	E258243	ELEKTRISOLA HANGZHOU CO LTD
4	TAPE	CT	130°C	E165111	JINGJIANG YAHUA PRESSURE SENSITIVE GLUE CO LTD
		JY312	130°C	E188295	SUZHOU MAILADUONA ELECTRIC MATERIAL CO LTD
5	CORE	EFD20 2.3K Mn-Zn	NA	NA	YANXIN
6	BOBBIN	PM-9630 PM9820	150°C	E41429	SUMITOMO BAKELITE CO LTD
7	EPOXY	E500	NA	E218090	DONGGUAN EATTO ELECTRONIC MATERIAL CO LTD
		S-9001A/B-SY	NA	E229633	GUANGZHOU WELLS ELECTRONIC MATERIALCO LTD
8	FLUX	F-104	NA	NA	HONGTAI
9	INK	ZSR-150 KSM-388 VIC	/	E112960 E189612 NA	QIANGLI SHIHU GUANGZHOU KUANGCHUN PHOTOSENSITIVITY MATERIAL CO LTD SEIKO ADVANCE
10	SOLDER BAR	Sn99.3/Cu0.7, SOLDER BAR	NA	NA	DONGGUAN QI HANG XI YE MANUFACTURING CO.,LTD
11	CLIP	EFD20	NA	NA	创顺五金电子厂





機密 CONFIDENTIAL

- 注意事項:
1. 材質: TSE-2186U
 2. 顏色: 黑色
 3. 硬度: 60±5(Shore A)
 4. 重量: 1g(3D Model估算值/成品量測)
 5. 成品色差請依據PANTONE或非色標顏色標準, ΔE < 1.5
 6. 成品表面不可有: 成型不良痕跡、破損、溢料、標漆與毛邊, 外觀缺陷請參照圖面標示, 相關檢驗材料, 請依據「塑膠件檢驗抽驗作業規範」辦理
 7. 檢驗尺寸為圖面尺寸公差及檢驗尺寸(或品尺寸, 非製成後), 請依據圖面標示量測
 8. 參考尺寸以圖面標註的主要數量, 必要時請與客戶溝通
 9. 所有材料、組裝零件及包裝之材料皆需符合RoHS指令規範, 需符合歐盟2011/65/EU法規之有害物質限制含量以下規定且不受任何材料限制, 如此才符合我們公司的判定標準
 10. 所有檢驗報告都應包含在內, 反之廠商有責任提供一週內提供之半年內檢驗報告
 11. 所有外觀性之尺寸都需要符合2D的公差
 12. 包裝規範: 包裝的規格如下(如產品在電氣過程中, 有磁場, 甚至強電磁場或噴漆材料等, 包裝材料不可用磁鐵等... 表面上不可有溢料, 噴漆和破損)

REVISIONS				
REV	DESCRIPTION	ENGINEER	REQUIRE	DATE
1.0	New Edition			Feb-22-19

UNLESS OTHERWISE SPECIFIED
ALL DIMENSIONS ARE IN mm

TOLEANCE ON:
LINEAR : <30 ±0.10
 30-50 ±0.15
 50-100 ±0.18
 100-200 ±0.20
 200-300 ±0.25
 >300 ±0.30

ANGULAR: X ±1°
 X.X ±0.5°

PART NO.		6120883006	
ENGR	Amy	MODEL	TSE2186U, 第 060
DRN	Amy	DRAWING TITLE	防水標 - 前置PC
CHK	Joy	APRV	DRAWING NO.
M-TL TSE-2186U		ISSUE DATE	Feb-22-19
FINISH		SCALE	1:1
CP02-W1-014-01-4	第三角法	SIZE	A4
		UNIT	mm
		SHEET	1 OF 1

正式圖面

Index	Model Name	PN	Model Description	Qty
1	DB-GLASS-INNER-IB9387-HT-27135	610123000G	玻璃, IB9387-HT, 内层	1
2	DB-GLASS-RING-IB9387-HT-27135	610123200G	玻璃, IB9387-HT, 环	1
3	DB-MAIN-GLASS-IB9387-HT-27135	610122900G	玻璃, IB9387-HT, 主层	1
4	IB9387-HT-DB-GUILE	610125300G	玻璃, SUPER-X-8008, 玻璃胶	1
5	IB9387-HT_FRONT_COVER_27135	600158000G	玻璃, IB9387-HT, 前盖	1

機密 CONFIDENTIAL

REVISIONS				
REV	DESCRIPTION	ENGINEER	REQUIRE	DATE
1.0	New Edition			Aug-14-18

注意事項:

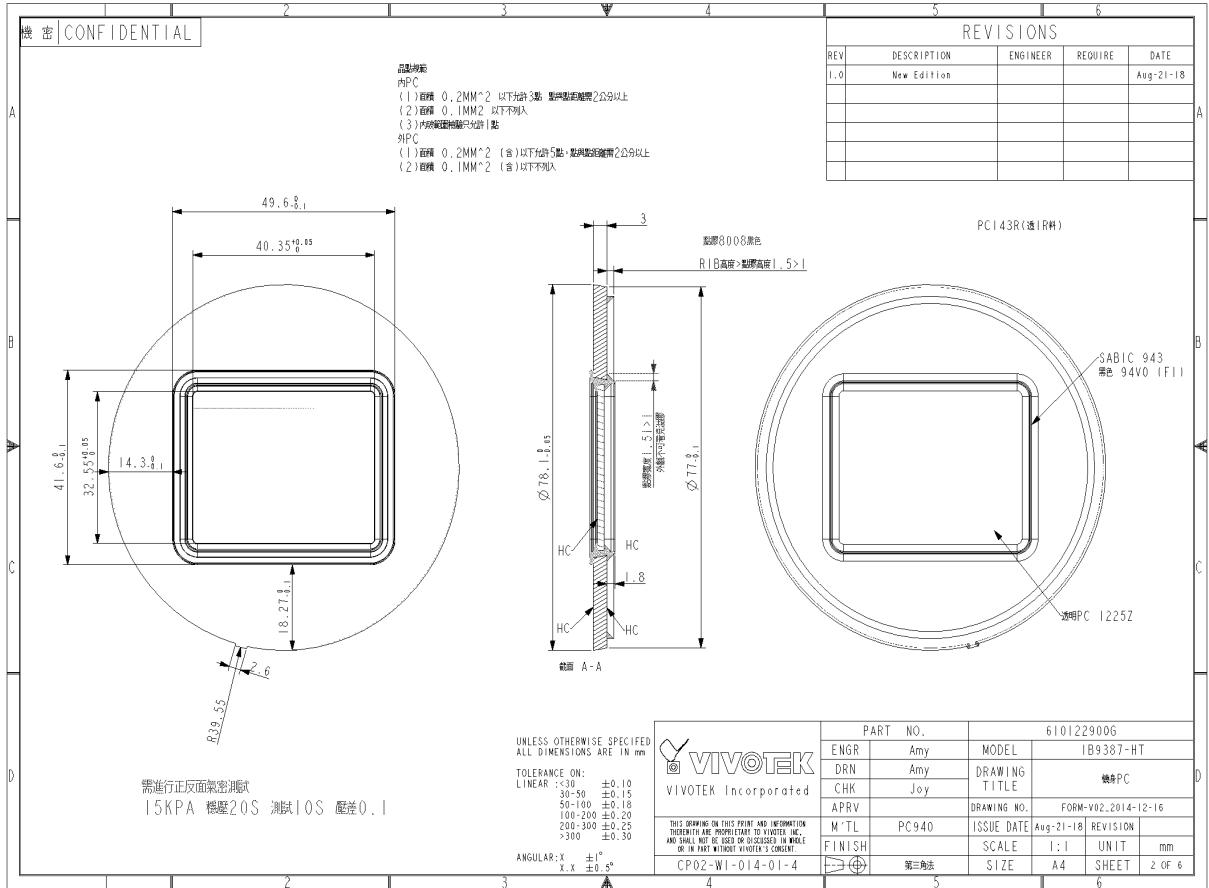
1. 玻璃膠: 玻璃膠的厚度與玻璃的厚度相同, 玻璃膠, 在安裝玻璃時應均勻地塗抹在玻璃上, 玻璃上不可有氣泡, 玻璃膠時, 應向內, 向後拉緊玻璃膠的厚度與玻璃的厚度相同。
2. 玻璃膠: 玻璃膠的厚度與玻璃的厚度相同, 玻璃膠, 在安裝玻璃時應均勻地塗抹在玻璃上, 玻璃上不可有氣泡, 玻璃膠時, 應向內, 向後拉緊玻璃膠的厚度與玻璃的厚度相同。
3. 玻璃膠: 玻璃膠的厚度與玻璃的厚度相同, 玻璃膠, 在安裝玻璃時應均勻地塗抹在玻璃上, 玻璃上不可有氣泡, 玻璃膠時, 應向內, 向後拉緊玻璃膠的厚度與玻璃的厚度相同。
4. 玻璃膠: 玻璃膠的厚度與玻璃的厚度相同, 玻璃膠, 在安裝玻璃時應均勻地塗抹在玻璃上, 玻璃上不可有氣泡, 玻璃膠時, 應向內, 向後拉緊玻璃膠的厚度與玻璃的厚度相同。
5. 玻璃膠: 玻璃膠的厚度與玻璃的厚度相同, 玻璃膠, 在安裝玻璃時應均勻地塗抹在玻璃上, 玻璃上不可有氣泡, 玻璃膠時, 應向內, 向後拉緊玻璃膠的厚度與玻璃的厚度相同。
6. 玻璃膠: 玻璃膠的厚度與玻璃的厚度相同, 玻璃膠, 在安裝玻璃時應均勻地塗抹在玻璃上, 玻璃上不可有氣泡, 玻璃膠時, 應向內, 向後拉緊玻璃膠的厚度與玻璃的厚度相同。

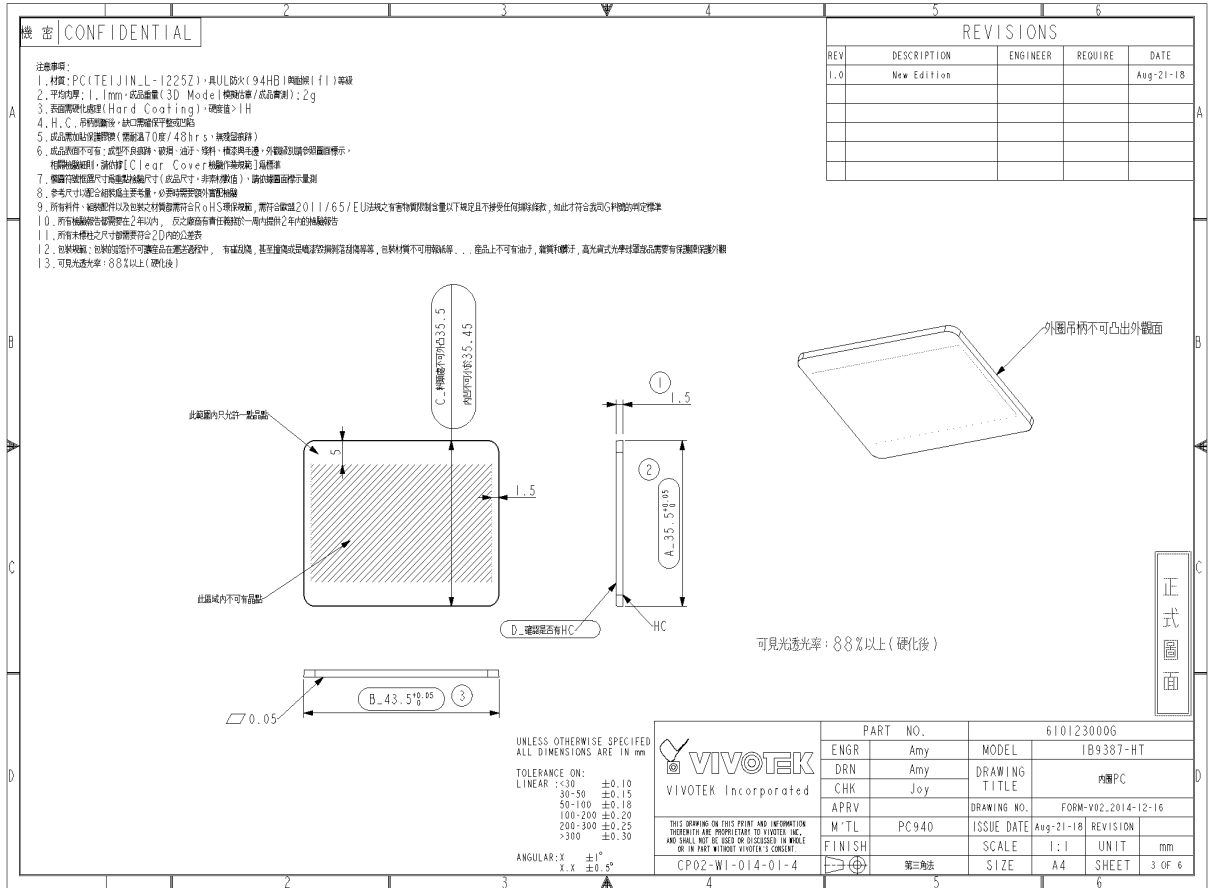
UNLESS OTHERWISE SPECIFIED
ALL DIMENSIONS ARE IN mm

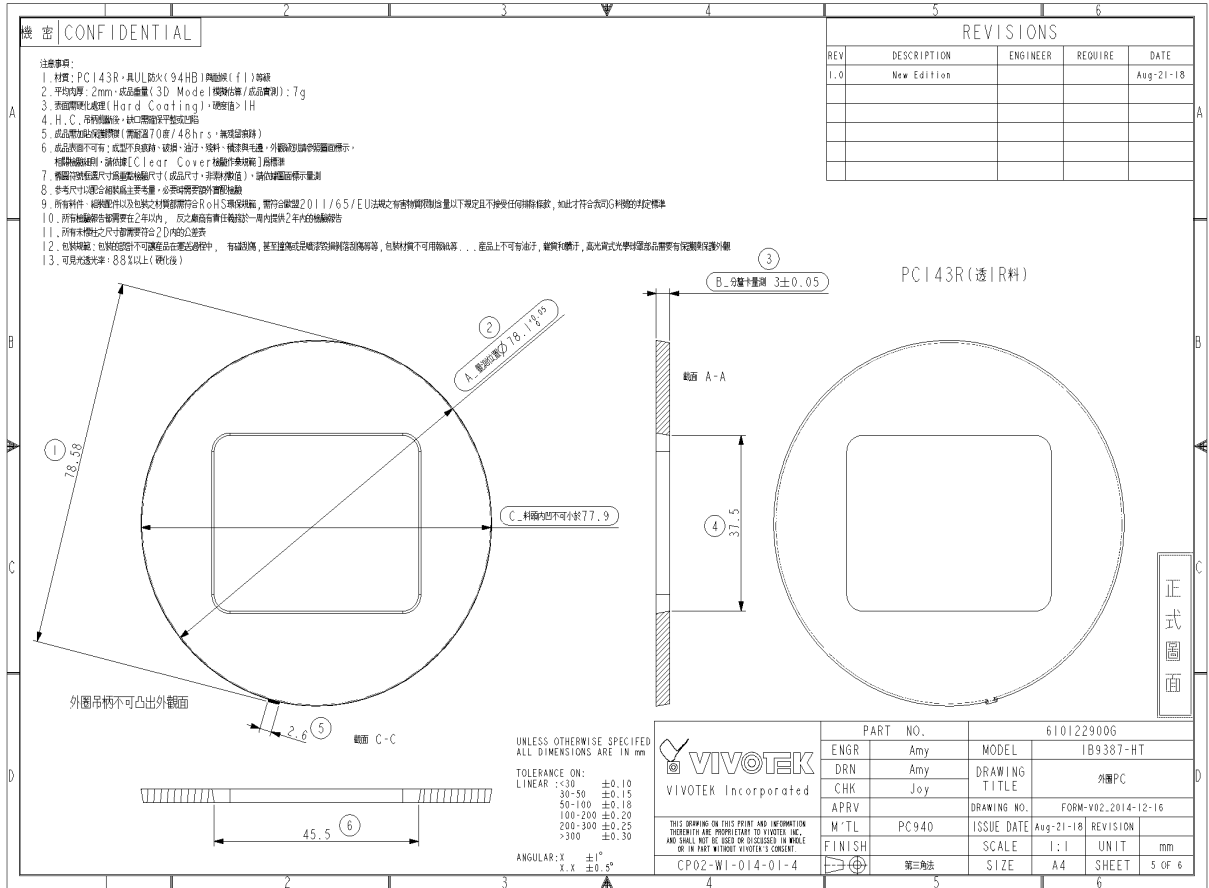
TOLEANCE ON:
LINEAR : ±0.10
 ±0.15
 ±0.18
 ±0.20
 ±0.25
 ±0.30

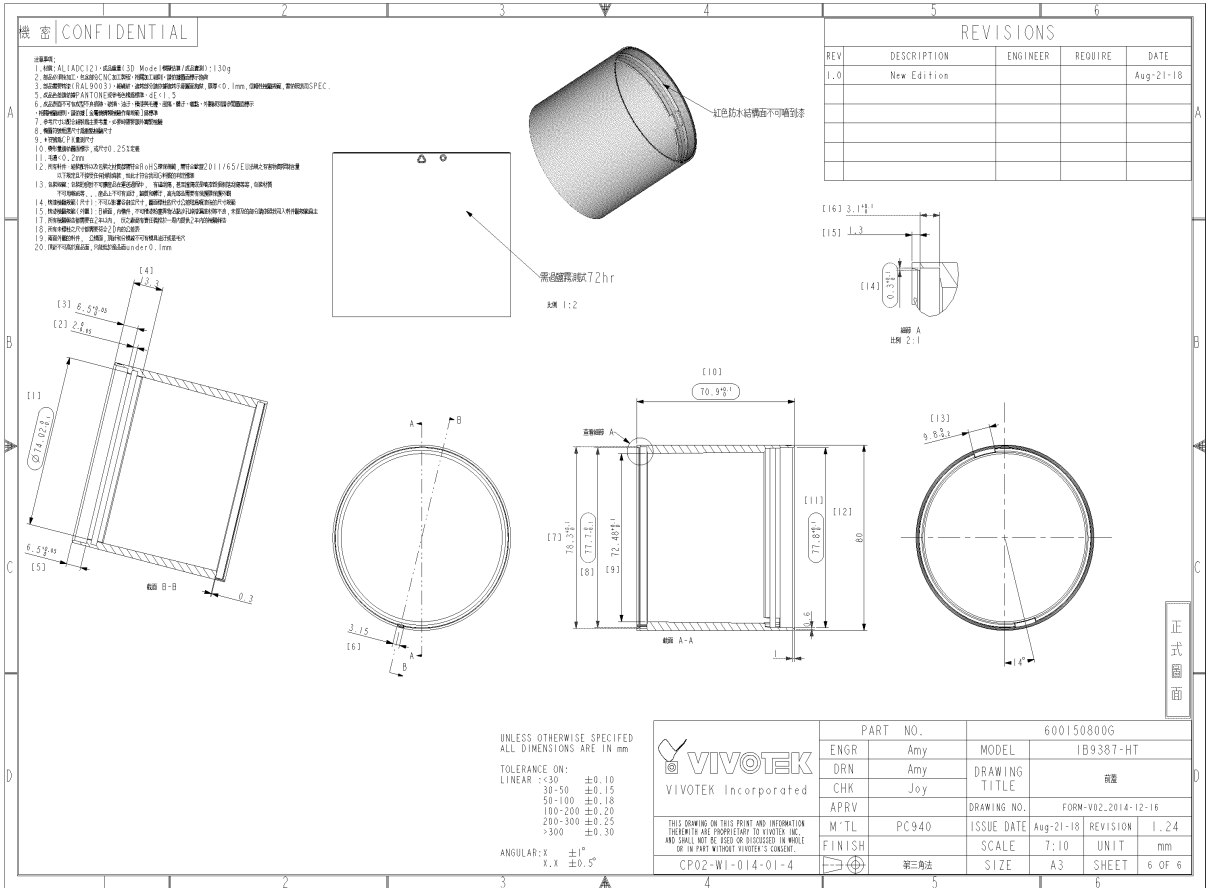
ANGULAR: X ±1°
 X, X ±0.5°

PART NO.		***	
ENGR	Amy	MODEL	IB9387-HT
DRN	Amy	DRAWING TITLE	IB9387-HT-ASSY-FRONT-COVER
CHK	Joy		
APRV		DRAWING NO.	FORM-V02-2014-12-16
M-TL PC940		ISSUE DATE	Aug-14-18
FINISH		SCALE	1:1
CPO2-WI-014-01-4		SIZE	A3
		SHEET	1 OF 6





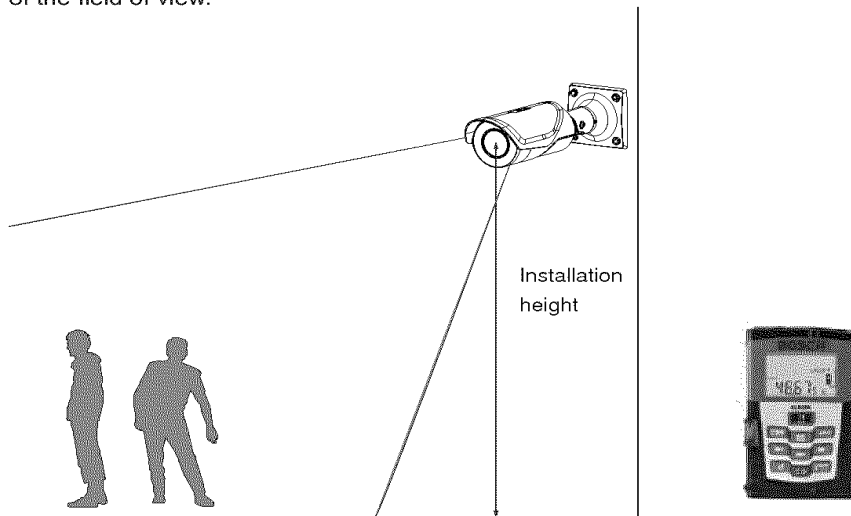




Hardware Installation

IMPORTANT:

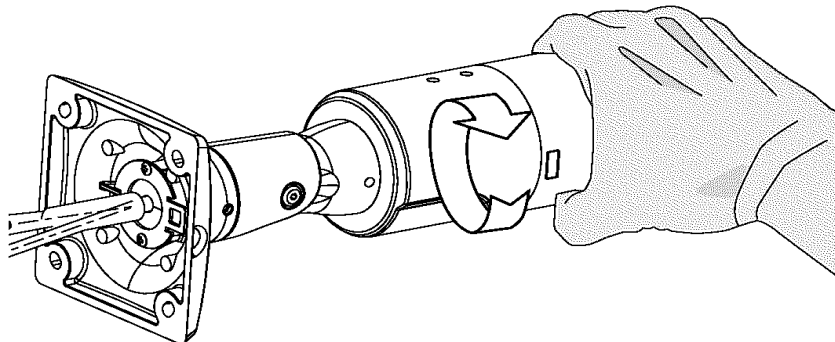
If you plan to use the Human Detection feature, make sure you measure the height of your camera. The height information is important for the accuracy of the video analytics results. Some of the other perspective information are automatically collected by the onboard S-sensor. The height information enables the horizontal and vertical keystone corrections of the field of view.



1. Jot down the camera's MAC address for later reference.

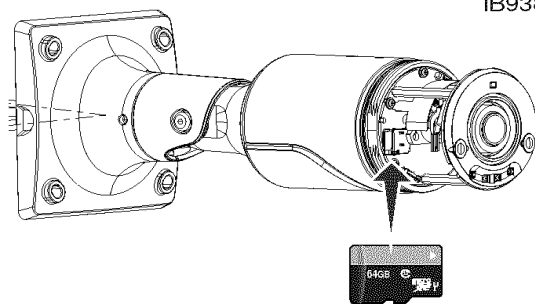


2. Turn the front section of the camera counter-clockwise to remove the front section.

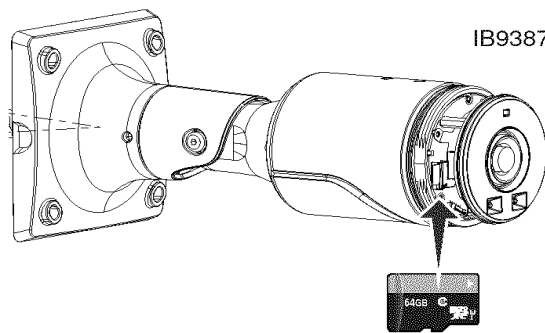


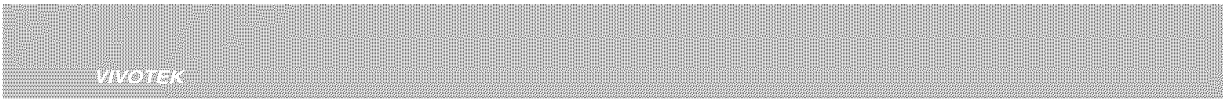
3. Install a MicroSD card.

IB9387-HT, IB9387-EHT

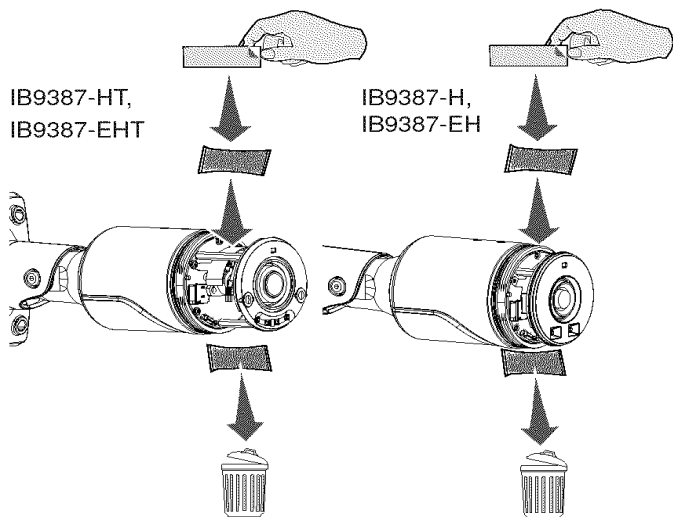


IB9387-H, IB9387-EH

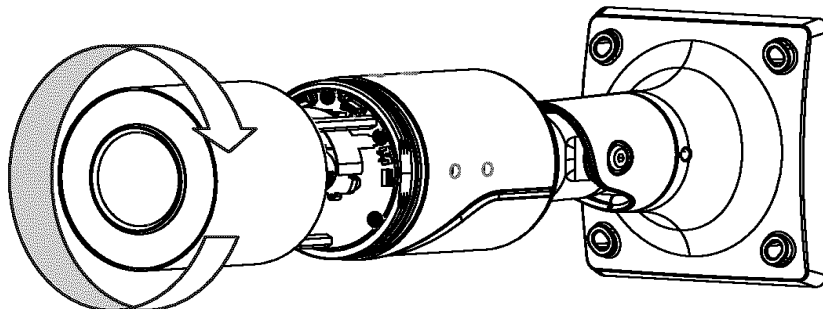




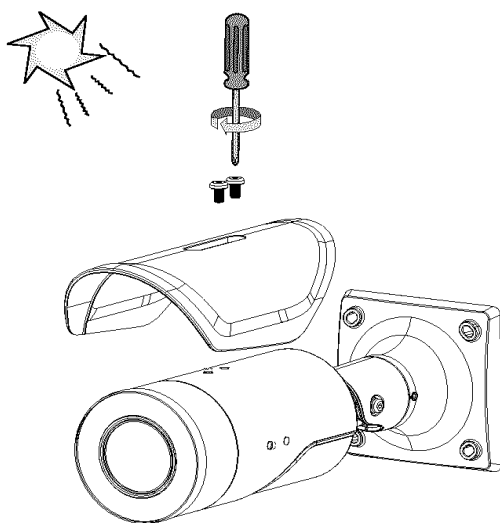
4. Replace the desiccant bag on the side of the camera infrastructure.



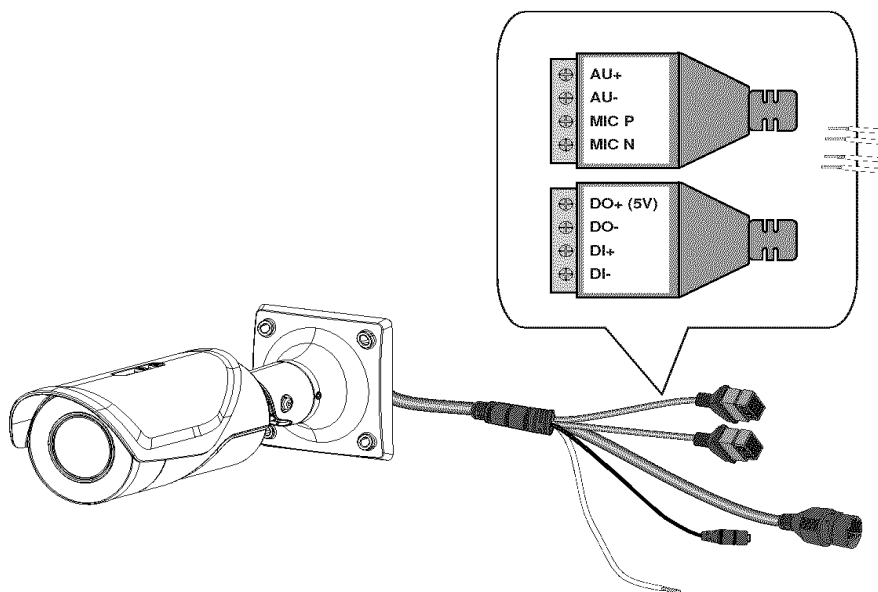
5. Install the front section by turning it clock-wise until it is tightly fastened.



6. Install the sunshield.

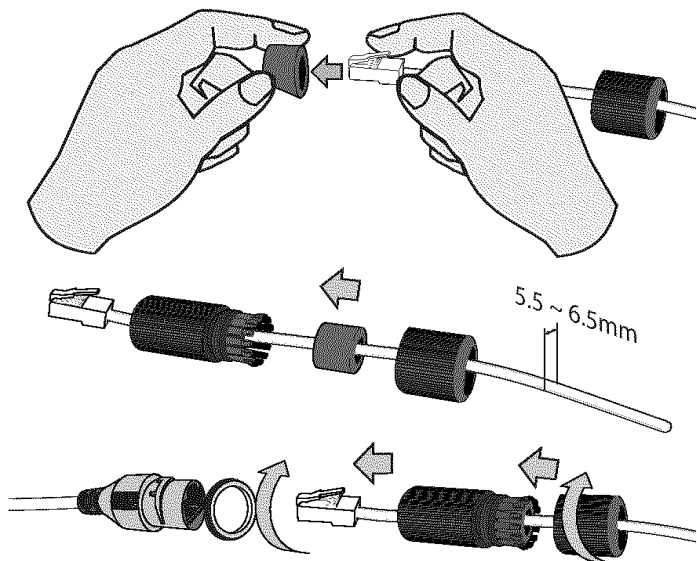


7. If used, connect the DI/DO, or audio wires to the terminal connectors.

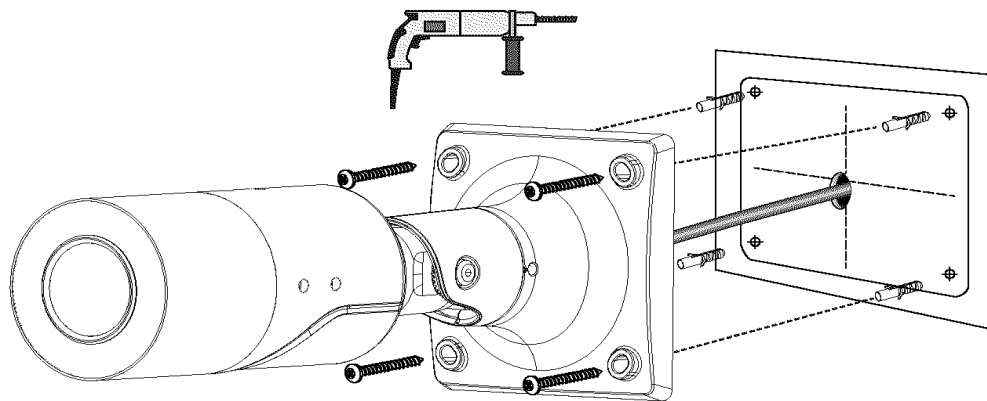


VIVOTEK

8. Pass an Ethernet cable through the waterproof cable gland components, and through the rubber seal as shown below. Connect the Ethernet cable to the camera's RJ45 onnector.



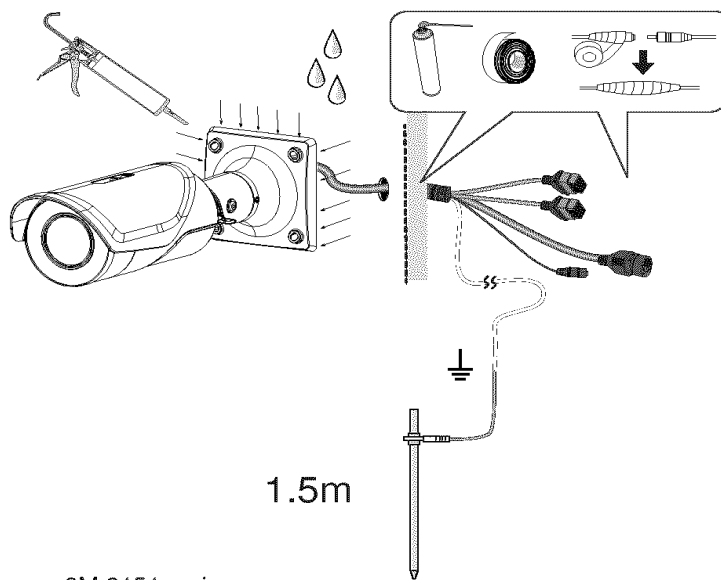
9. Use the alignment sticker to drill mounting holes on the wall. If preferred, drill a routing hole. Install the camera by hammer in the wall anchors and drive screws.



10. Use putties to seal the cable joints for water-proofing. Connect the ground wire to a grounded earth rod with a resistance smaller than 4Ω , with a section area larger than 25mm^2 , to a ground rod 1.5 meters into the ground.

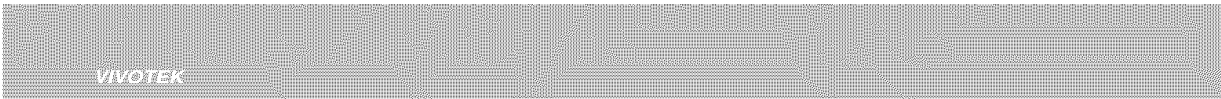
You can also caulk the peripherals of the camera bracket if the junction box is not in use.

The ground wire is user-supplied.

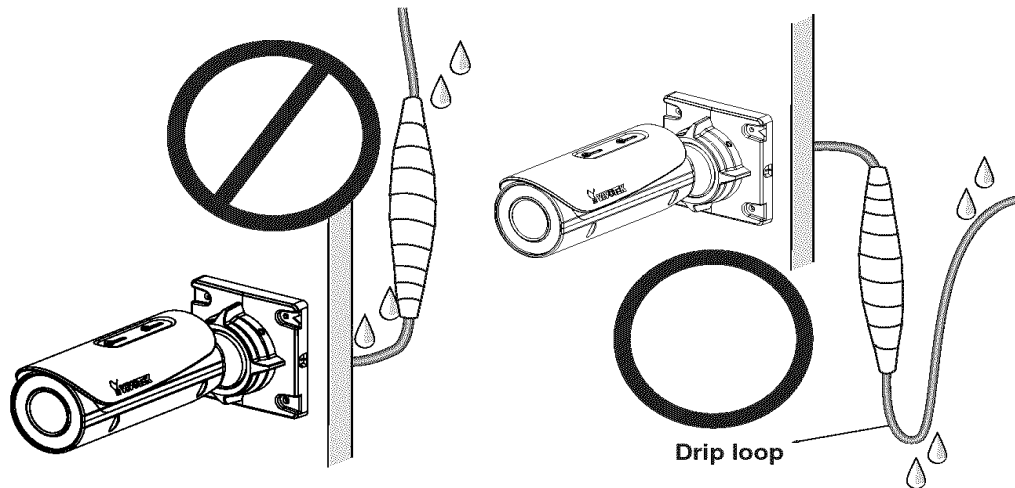


3M 2151 series





It is also very important to route cables to form a drip loop. Leakage or moisture can gather in condensation into water drops and run along the cable. A drip loop ensures no water gets to the camera.



All models are similar except for model designation, input ratings, heater, front cover, Lens module, IR LED board and relevant circuit and PCB layout.

See below table and photo documentation in attachment for details.

Model	IB9387-EH	IB9387-H	
Input Rating	PoE 42.5-57 Vdc, 0.46-0.34 A or DC 12 V, 1.25 A	PoE 37-57 Vdc, 0.22-0.14 A or DC 12 V, 0.5 A	
Heater	With	Without	
Tma	50		
IR LED board	Type 1		
Front cover	Type 1		
Lens module	Type 1		
Model	IB9387-EHT	IB9387-LPR	IB9387-HT
Input Rating	PoE 42.5-57 Vdc, 0.55-0.41 A or DC 12 V, 1.58 A	PoE 37-57 Vdc, 0.33-0.21 A or DC 12 V, 0.83 A	
Heater	With	Without	
Tma	55		
IR LED board	Type 2		
Front cover	Type 2		
Lens module	Type 2		

Test Record No. 1

- The manufacturer submitted representative production samples of Network Camera, Model 1) IB9387-EH, 2) IB9387-H.

- Unless otherwise noted, all tests marked with "CB" were conducted by UL (Demko) under the CB Scheme as detailed under CB Certificate Number DK-79872-UL, dated 2019-01-10 and CB Report Reference Number CB1291810064A, dated 2019-01-07.

- Test results reported relate only to the item tested.

The following tests were waived:

Test	Rationale for Waiving
Input: Single-Phase (1.6.2)	CB
SELV Reliability Test Including Hazardous Voltage Measurements (2.2.2, 2.2.3, 2.2.4, Part 22 6.1)	CB
Limited Current Circuit Measurement (2.4.1, 2.4.2)	CB
Limited Power Source Measurements (2.5)	CB
Steady Force (4.2.1 - 4.2.4)	CB
Impact (4.2.5, 4.2.1, Part 22 10.2)	CB
Stress Relief (4.2.7, 4.2.1)	CB
Loading - Wall and Ceiling Mounted Equipment (4.2.10)	CB
Heating (4.5.1, 1.4.12, 1.4.13)	CB
Barrier Adhesive (4.6.5)	CB
Component Failure (5.3.1, 5.3.4, 5.3.7)	CB
Overload of Operator Accessible Connector (5.3.7)	CB
Water Spray (Part 22 9.1, Annex B)	CB

The following supplements are provided as a part of this Test Record. NOTE: These supplements are only available to the Applicant via the CDA system.

Type	Supplement Id	Description
Attachment	2-01	CRD

Test Record No. 2

-- The manufacturer submitted representative production for Network Camera, Models IB9387-EH, IB9387-H Employing the Alternate 1. Adding models (IB9387-EHT, IB9387-HT, and IB9387-LPR) with new front cover, IR LED board. 2. Adding new input ratings for new models.

-- The test methods and results of the following tests have been reviewed and found to be in accordance with the requirements in the Standards noted above. Test results are valid only for the tested equipment.

-- Tests of the product were not considered necessary based upon previous evaluation under the CB scheme. The CB Certificate No. DK-78872-M1-UL, Dated 2019-07-18, and CB Test Report No. CB1291904067A Dated 2018-07-09 were prepared by UL International Demko A/S.

-- UL/CUL Investigation for Network Camera, Models IB9387-EH, IB9387-H Employing the Alternate: 1. Adding models (IB9387-EHT, IB9387-HT and IB9387-LPR) with new front cover, IR LED board. 2. Adding new input ratings for new models due to similarity in construction as previously tested.

-- Test results reported relate only to the items tested.

The following tests were waived:

Test	Rationale for Waiving
Input: Single-Phase (1.6.2)	(Referred to CB Report.)
Steady Force (4.2.1 - 4.2.4)	(Referred to CB Report.)
Impact (4.2.5, 4.2.1, Part 22 10.2)	(Referred to CB Report.)
Stress Relief (4.2.7, 4.2.1)	(Referred to CB Report.)
Loading - Wall and Ceiling Mounted Equipment (4.2.10)	(Referred to CB Report.)
Heating (4.5.1, 1.4.12, 1.4.13)	(Referred to CB Report.)
Barrier Adhesive (4.6.5)	(Referred to CB Report.)
Component Failure (5.3.1, 5.3.4, 5.3.7)	(Referred to CB Report.)

The following supplements are provided as a part of this Test Record. NOTE: These supplements are only available to the Applicant via the CDA system.

Type	Supplement Id	Description
Attachment	2-03	CRD Sheet