

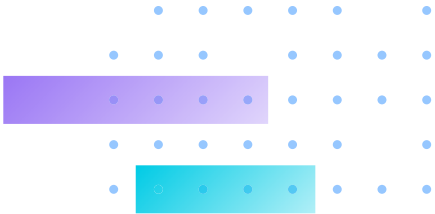
# VIVOCAM L2 Series

## VIVOCAM L2 Managed PoE Switch

---

- Topology View, Floor View, Map View
- Traffic Monitor
- Device List
- DHCP Server
- Non-Stop PoE
- 802.3 af/at/bt Hybrid, bt PoE Port Max. 90W
- Extended PoE Mode up to 250M





# Highlight Features

Devices List

Auto-refresh

Show  entries

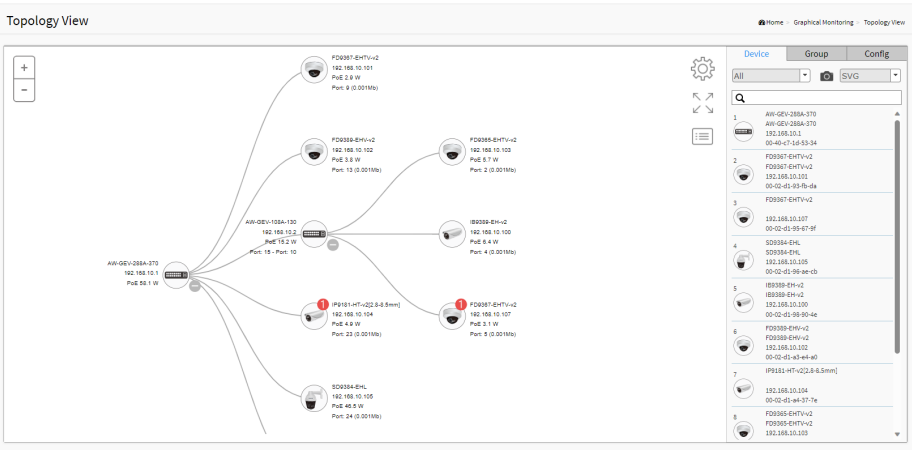
| Remove                   | Status | Device Type | Model Name | Device Name               | MAC               | IP Address    |
|--------------------------|--------|-------------|------------|---------------------------|-------------------|---------------|
| <input type="checkbox"/> | Online | IP Camera   | FE8174     | Mega-Pixel Network Camera | 00-02-D1-2A-51-2B | 192.168.40.80 |
| <input type="checkbox"/> | Online | IP Camera   | FD8154V    | Mega-Pixel Network Camera | 00-02-D1-30-D6-4E | 192.168.40.83 |
| <input type="checkbox"/> | Online | IP Camera   | IP8364     | Mega-Pixel Network Camera | 00-02-D1-22-97-35 | 192.168.40.85 |
| <input type="checkbox"/> | Online | IP Camera   | FD8182-F2  | Mega-Pixel Network Camera | 00-02-D1-38-F3-8D | 192.168.40.86 |
| <input type="checkbox"/> | Online | IP Camera   | FD8362E    | Mega-Pixel Network Camera | 00-02-D1-21-29-05 | 192.168.40.88 |
| <input type="checkbox"/> | Online | IP Camera   | IB8338-H   | IB8338-H                  | 00-02-D1-2F-99-81 | 192.168.40.89 |
| <input type="checkbox"/> | Online | IP Camera   | FD8173-H   | Mega-Pixel Network Camer  | 00-02-D1-30-5B-9F | 192.168.40.94 |
| <input type="checkbox"/> | Online | IP Camera   | CC8130     | Mega-Pixel Network Camer  | 00-02-D1-1D-21-83 | 192.168.40.95 |
| <input type="checkbox"/> | Online | IP Camera   | IP8335H    | Mega-Pixel Network Camera | 00-02-D1-25-33-E7 | 192.168.40.96 |
| <input type="checkbox"/> | Online | IP Camera   | I29361-EH  | I29361-EH                 | 00-02-D1-43-E6-52 | 192.168.40.97 |

Showing 41 to 50 of 217 entries

Previous 1 ... 4 5 6 ... 22 Next

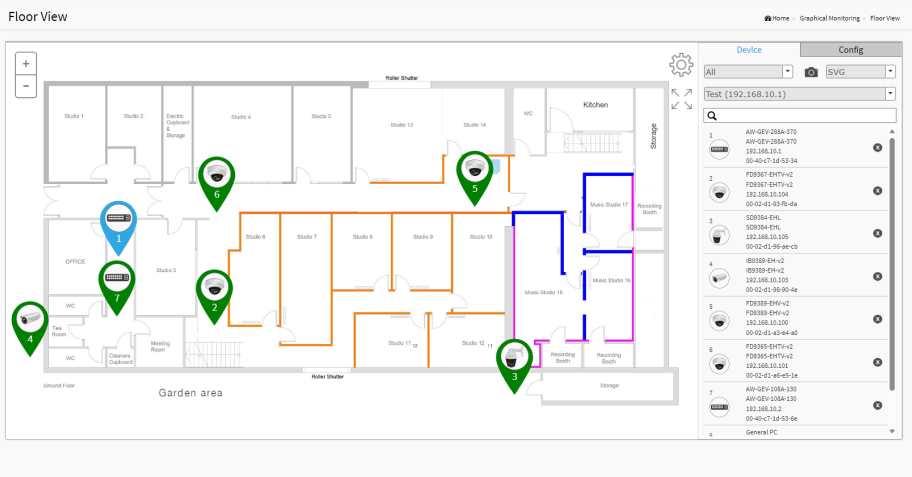
## Auto Discovery

The VIVOCAM L2 series can automatically discover VIVOTEK's devices, such as network cameras, video servers, and NVRs, with a simple click of the mouse.



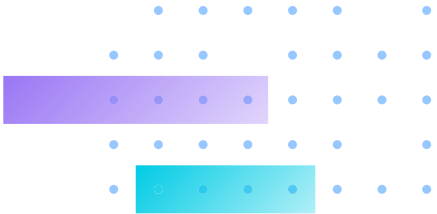
## Topology View

Auto-generated Topology View allows administrators to quickly view and export a complete network topology in SVG/PNG/PDF format for easier inspection and planning.

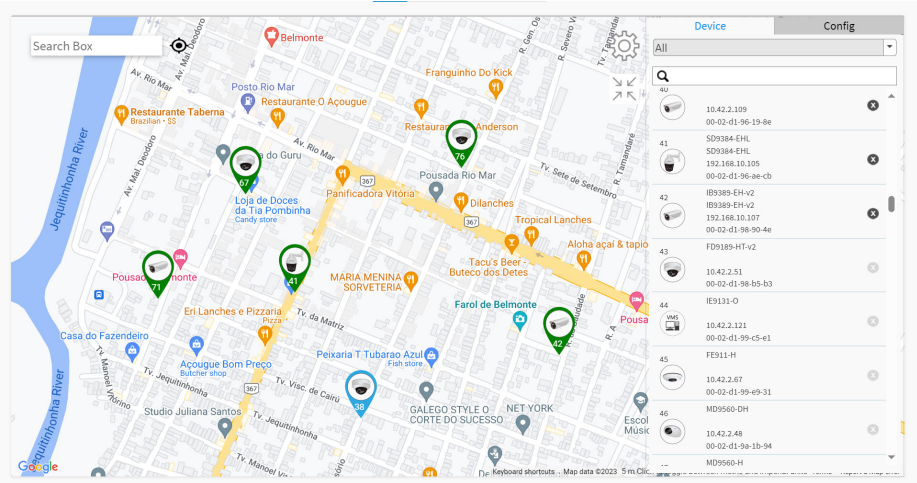


## Floor View

Upload custom floor images. Floor View allows for quick location of deployed surveillance devices and exporting this view in SVG/PNG/PDF format for easier inspection and planning.



# Highlight Features



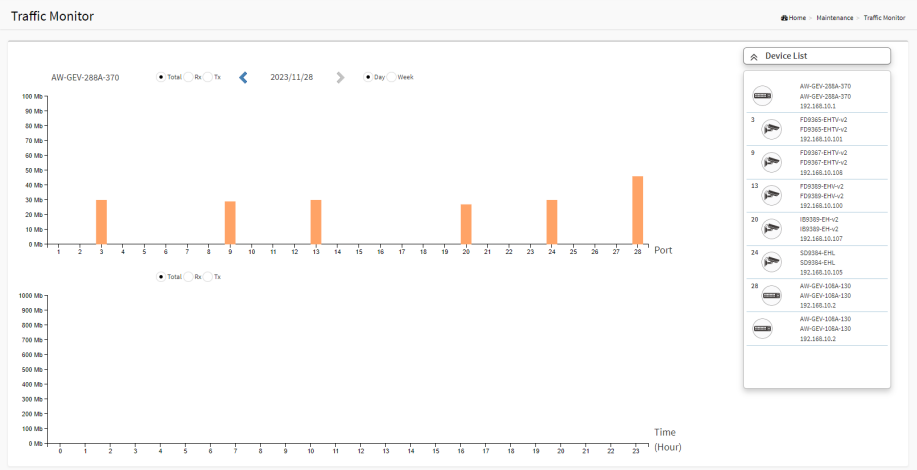
## Google Map View

Locate surveillance devices on Google Maps to simplify multi-site management of any large-scale deployments.



## Device Management

Easy network configuration, open camera Web UI, diagnose camera connection and cable status, display camera live stream, change camera network setting, restore default, PoE consumption, and PoE on/off control.



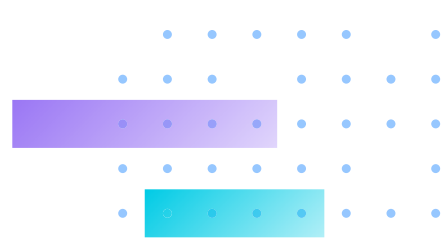
## Traffic Monitor

An auto-generated comprehensive chart shows port-by-port network traffic status.

# Technical Specifications



| Model  | AW-GEV-108A-130  | AW-GEV-288A-370  |
|--|--|--|
| Short Highlight  | 2xGbE bt 90W PoE + 6xGbE 30W PoE + 2xGbE Combo VIVOCAM L2 Managed PoE Switch | 4xGbE bt 90W PoE + 20xGbE 30W PoE+ 4xGbE Combo VIVOCAM L2 Managed PoE Switch |
| <b>Port Configuration</b>                                    |  |  |
| Gigabit RJ45 Port  | 8  | 24   |
| Gigabit Combo Port   | 2  | 4  |
| Total Ports  | 10   | 28   |
| Console Port   | 1  | 1  |
| <b>HW Performance</b>  |  |  |
| Switching Bandwidth  | 20Gbps   | 56Gbps   |
| Forwarding Capacity  | 14.88 Mpps   | 41.7Mpps   |
| MAC Address  | 8K   | 8K   |
| Jumbo Frames   | 9216 Bytes   | 9216 Bytes   |
| <b>Network</b>   |  |  |
| IPv4/IPv6  | V  | V  |
| <b>Surveillance Features</b>                                 |  |  |
| Network Device   | up to 256 pcs  | up to 256 pcs  |
| PoE Reboot   | V  | V  |
| Surveillance Device Management List                          | V  | V  |
| DHCP Server Function   | V  | V  |
| VIVOTEK Device Account/Password Setting                      | V  | V  |
| VIVOTEK Device Grouping Setting for VLAN                     | V  | V  |
| VIVOTEK Device Name Edit                                     | V  | V  |
| VIVOTEK Camera/Video Server Reboot/Restore Default           | V  | V  |
| VIVOTEK Device Re-direct Link                                | V  | V  |
| VIVOTEK Device On/Off Line Status                            | V  | V  |
| <b>E-Map View</b>  |  |  |
| Topology View  | V  | V  |
| Floor View   | V  | V  |
| Google Map View  | V  | V  |
| <b>Maintenance</b>   |  |  |
| VIVOTEK Camera/Video Server Configuration File Export/Import | V  | V  |
| Floor Image Management                                       | V  | V  |
| Export Surveillance Management Device List                   | V  | V  |
| Cable Diagnostics  | V  | V  |
| Traffic Monitoring   | V  | V  |



# Technical Specifications

## L2 Managed Features

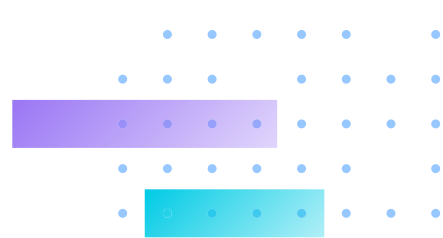
|                          |                                   |               |               |
|--------------------------|-----------------------------------|---------------|---------------|
| Spanning Tree            | IEEE802.1D (STP)                  | V             | V             |
|                          | IEEE802.1w (RSTP)                 | V             | V             |
|                          | IEEE802.1s (MSTP)                 | V             | V             |
| Trunking                 | IEEE802.1d (LACP)                 | V             | V             |
|                          | Static Aggregation                | V             | V             |
| VLAN                     | 802.1Q Tag-based VLAN             | 4096 VLAN IDs | 4096 VLAN IDs |
|                          | Port-based VLAN                   | V             | V             |
|                          | Private VLAN Edge (PVE)           | V             | V             |
|                          | GARP VLAN                         | V             | V             |
|                          | Q-in-Q (Double Tag)               | V             | V             |
|                          | Protocol-based VLAN               | V             | V             |
|                          | MAC-based VLAN                    | V             | V             |
|                          | Voice VLAN                        | V             | V             |
|                          | IP Subnet-based VLAN              | V             | V             |
|                          | Multicast VLAN Registration (MVR) | V             | V             |
| IGMP Snooping (V1/V2/V3) | V                                 | V             |               |
| DHCP Relay               | V                                 | V             |               |
| MLD v1/v2 Snooping       | V                                 | V             |               |

## QoS Features

|                           |                         |   |   |
|---------------------------|-------------------------|---|---|
| Hardware Queues           |                         | 8 | 8 |
| Classification            | Port Based              | V | V |
|                           | 802.1p                  | V | V |
| Rate Limiting             | Ingress                 | V | V |
|                           | Egress                  | V | V |
|                           | Per Port                | V | V |
| Priority Queue Scheduling | WRR                     | V | V |
|                           | DSCP & Class of Service | V | V |

## Security

|   |  |               |               |
|---|--|---------------|---------------|
| IEEE802.1x                                | RADIUS Authentication  | V             | V             |
|   | IGMP-RADIUS Based  | V             | V             |
| Secure Sockets Layer (SSL)                |  | V             | V             |
| Port Security                             |  | V             | V             |
| IP Source Guard                           |  | V             | V             |
| Storm Control                             |  | V             | V             |
| Layer 2 Isolation Private VLAN Edge (PVE) |  | V             | V             |
| RADIUS/TACACS+                            |  | V             | V             |
| Loop Detection                            |  | V             | V             |
| DHCP Snooping                             |  | V             | V             |
| ACLs                                      | Up to 384 Entries  | 4096 VLAN IDs | 4096 VLAN IDs |
|   | Source and Destination MAC, VLAN ID or IP Address, Protocol, Port (DSCP) / IP Precedence | V             | V             |
|   | TCP/ UDP Source and Destination Ports  | V             | V             |
|   | 802.1p Priority  | V             | V             |
|   | ICMP Packets   | V             | V             |
|   | Ethernet Type  | V             | V             |
|   | TCP Flag   | V             | V             |



# Technical Specifications

## Management

|                         |   |   |
|-------------------------|---|---|
| SNMP (v1, v2c, v3)      | V | V |
| RMON (1,2,3 & 9 groups) | V | V |
| DHCP Server & Client    | V | V |
| Port Mirroring          | V | V |
| UPnP                    | V | V |
| LLDP (IEEE802.1ab)      | V | V |
| LLDP-MED                | V | V |
| S-Flow                  | V | V |
| Firmware Upgrade        | V | V |
| NTP                     | V | V |

## PoE Management

|                                       |   |   |
|---------------------------------------|---|---|
| PoE On/Off Control                    | V | V |
| PoE Alive Checking for PD             | V | V |
| PoE Scheduling                        | V | V |
| Power Delay                           | V | V |
| Non-Stop PoE                          | V | V |
| Extended PoE Mode (up to 250m/10mbps) | V | V |

## PoE Function

|   |  |   |
|---|--|---|
| IEEE 802.3af/at/bt PoE Standard Compliant | V  | V   |
| Number of PoE Output Port                 | 8  | 24  |
| PoE Output Power                          | Port 1-6 at 30W<br>Port 7-8 bt 90W   | Port 1-20 at 30W<br>Port 21-24 bt 90W   |
| Total PoE Power Budget                    | 130W   | 370W  |
| PoE Pin Assignment                        | Port 7-8 bt: 4 pairs 1/2 (-), 3/6 (+) and 4/5 (+), 7/8 (-)<br>Port 1-6 af/at: 2 pairs 1/2 (+), 3/6 (-) | Port 21-24 bt: 4 pairs 1/2 (-), 3/6 (+) and 4/5 (+), 7/8 (-)<br>Port 1-20 af/at: 2 pairs 1/2 (+), 3/6 (-) |

## Environmental Specifications

|                       |                             |                             |
|-----------------------|-----------------------------|-----------------------------|
| Operating Temperature | -10°C ~ 50°C (14°F ~ 122°F) | -10°C ~ 50°C (14°F ~ 122°F) |
| Storage Temperature   | -20°C ~ 70°C (-4°F ~ 158°F) | -20°C ~ 70°C (-4°F ~ 158°F) |
| Operating Humidity    | 10 ~ 90% RH                 | 10 ~ 90% RH                 |

## Mechanical Specifications

|            |                               |                              |
|------------|-------------------------------|------------------------------|
| Dimensions | 220 (W) x 44 (H) x 242 (D) mm | 442 (W) x 44 (H) x 211(D) mm |
| Weight     | 1.95 kg                       | 3.2 kg                       |

## Power Source

|           |             |             |
|-----------|-------------|-------------|
| AC Input  | 100V ~ 240V | 100V ~ 240V |
| Frequency | 50 ~ 60 Hz  | 50 ~ 60 Hz  |

## Certifications

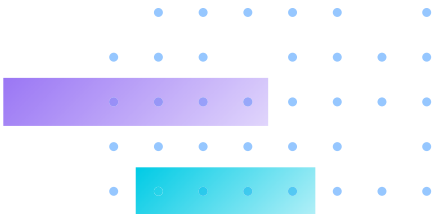
|                |                                    |                                    |
|----------------|------------------------------------|------------------------------------|
| Certifications | UL, CE, UKCA, FCC, VCCI, LVD, ICES | UL, CE, UKCA, FCC, VCCI, LVD, ICES |
|----------------|------------------------------------|------------------------------------|

## Warranty

|          |           |           |
|----------|-----------|-----------|
| Warranty | 24 months | 24 months |
|----------|-----------|-----------|

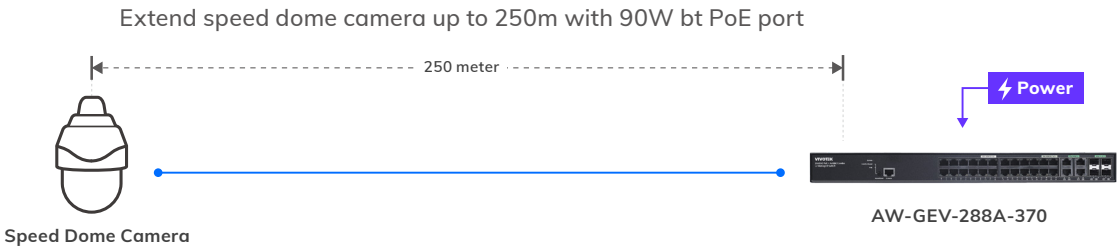
## Accessories

|                      |  |  |
|----------------------|--|--|
| Included Accessories | Power Cord, QIG, CD Manual, Rack Mount Kit | Power Cord, QIG, CD Manual, Rack Mount Kit |
|----------------------|--|--|

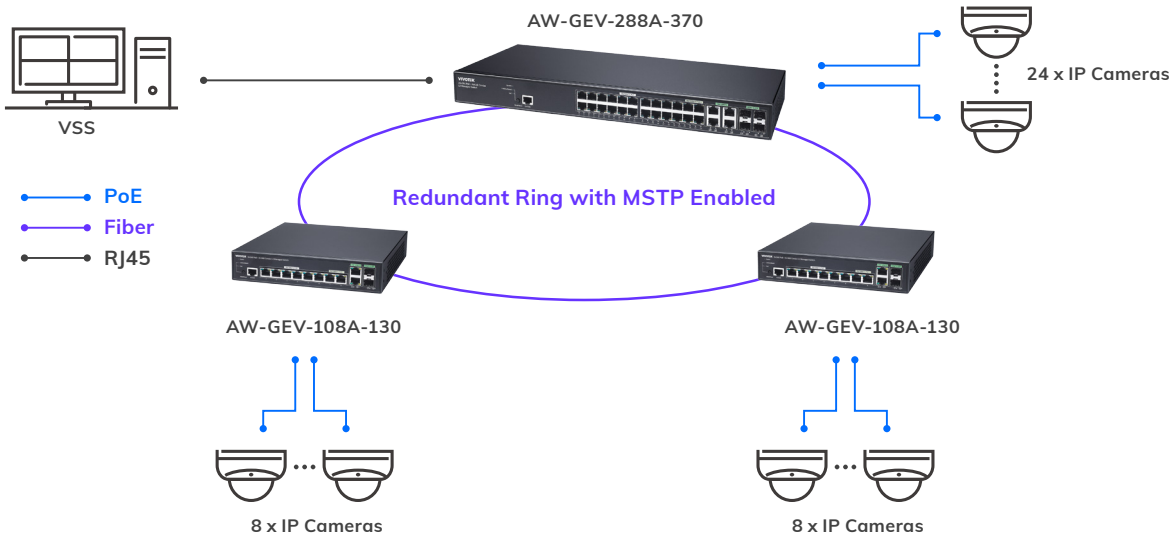


# Application

## • Extend PoE with 802.3bt 90W



## • Redundant Ring with MSTP Enabled



# Compatible Accessories

### SFP Transceiver



SFP-1000-MM85-X5  
1.25G, MMF, 0.5km



SFP-1000-MM13-02  
1.25G, MMF, 2km



SFP-1000-SM13-10  
1.25G, SMF, 10km



SFP-1000-SM13-40  
1.25G, SMF, 40km



SFP-1000-CPTX-X1  
1G SFP to RJ45

