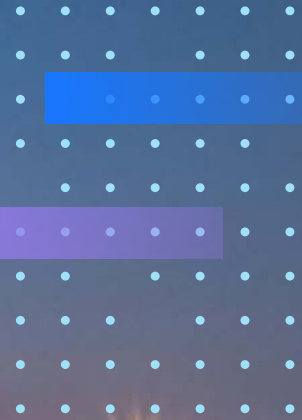


VIVOTEK

A Delta Group Company



Traffic Solutions

- Traffic Management
- City Surveillance
- Parking and Access Control



Elevating Traffic Management Efficiency with Reliability

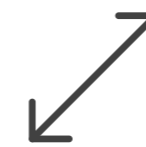


Reliable Traffic Management Solutions for a Safer Tomorrow

In the realm of traffic management, the need for reliability and dependability is paramount. VIVOTEK recognizes the pivotal role that efficient traffic management plays in our daily lives. That's why we're excited to introduce our suite of solutions, focusing on reliability, scalability, and integration.

Leveraging our extensive experience in transportation monitoring, VIVOTEK brings a dedicated approach to traffic management. Our commitment to safety and security is unwavering. Our Traffic Management Solutions are designed to meet the intricate demands of traffic projects.

Explore our solutions today as we strive to make our roads safer and traffic management more efficient.



Scale with Edge Analytics

VIVOTEK provide network cameras with on-device analytics to lower the total-cost-of-ownership (TCO) and improve scalability. Edge analytics reduces the needs for expensive hardware and software, at the same time, enable the project to scale by camera as-a-unit, minimize any idle computing power.



Diverse Protocol for Integration

VIVOTEK cameras provide extensive set of APIs to integrate with any traffic analytics software and management platform. This makes it effortless to receive comprehensive traffic data, crisp video, and device status and information.



Design Flexibility and Customizations

In order to satisfy the unique needs of our customers in the traffic management sector, VIVOTEK offers great flexibility of product customizations. Combining any lens, cabling options or more complex firmware and hardware modifications, our project consultants are ready to offer a solution based on individual project needs.



Long-term Product Support

With full consideration of the long-term perspective of traffic deployments, VIVOTEK carefully plans products life-cycle and ensures compatibility of future product generations about technical specifications and dimensions in order to streamline project maintenance.

Embark on the Journey with VIVOTEK Traffic Solution

P. 5

Traffic Management

Ensuring the safety and smooth flow of urban transportation.

P. 7

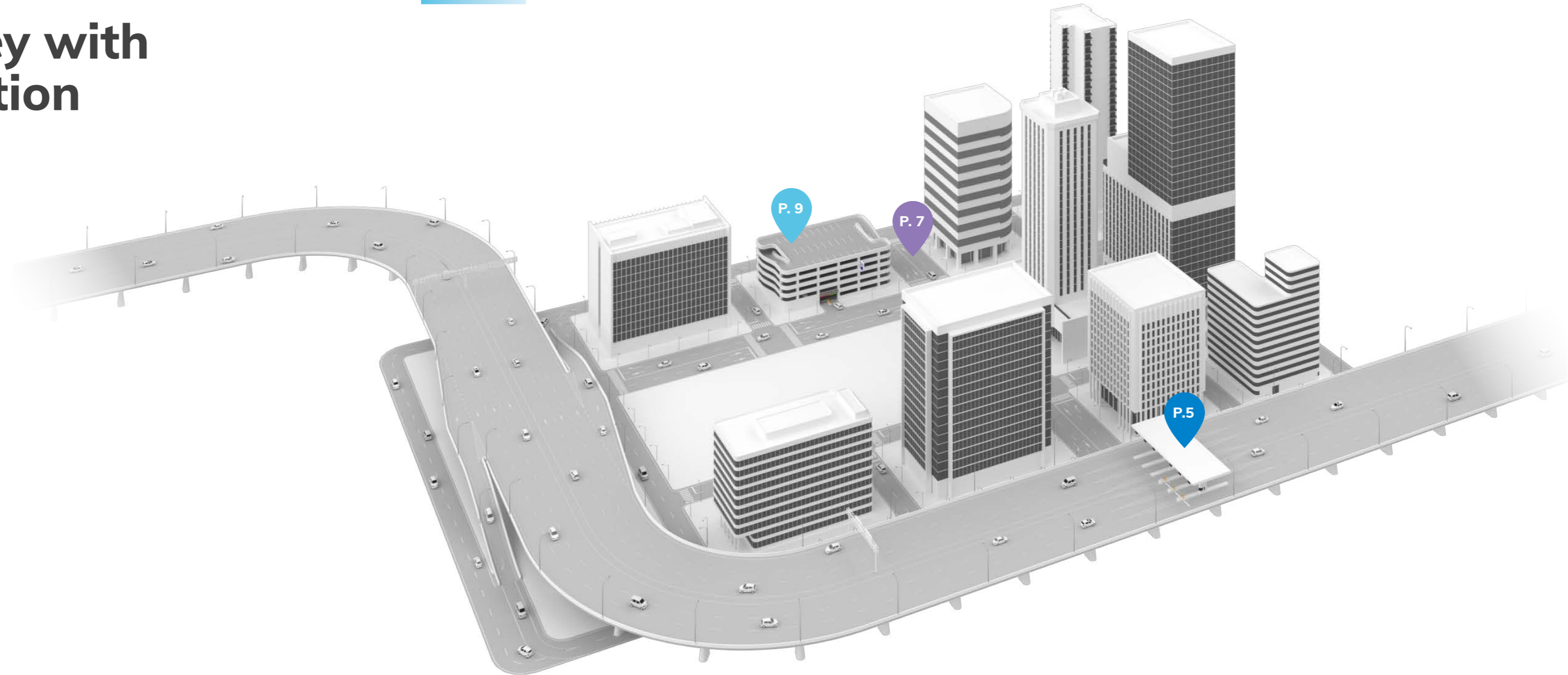
City Surveillance

Enhancing public safety through comprehensive monitoring and analytics.

P. 9

Parking and Access Control

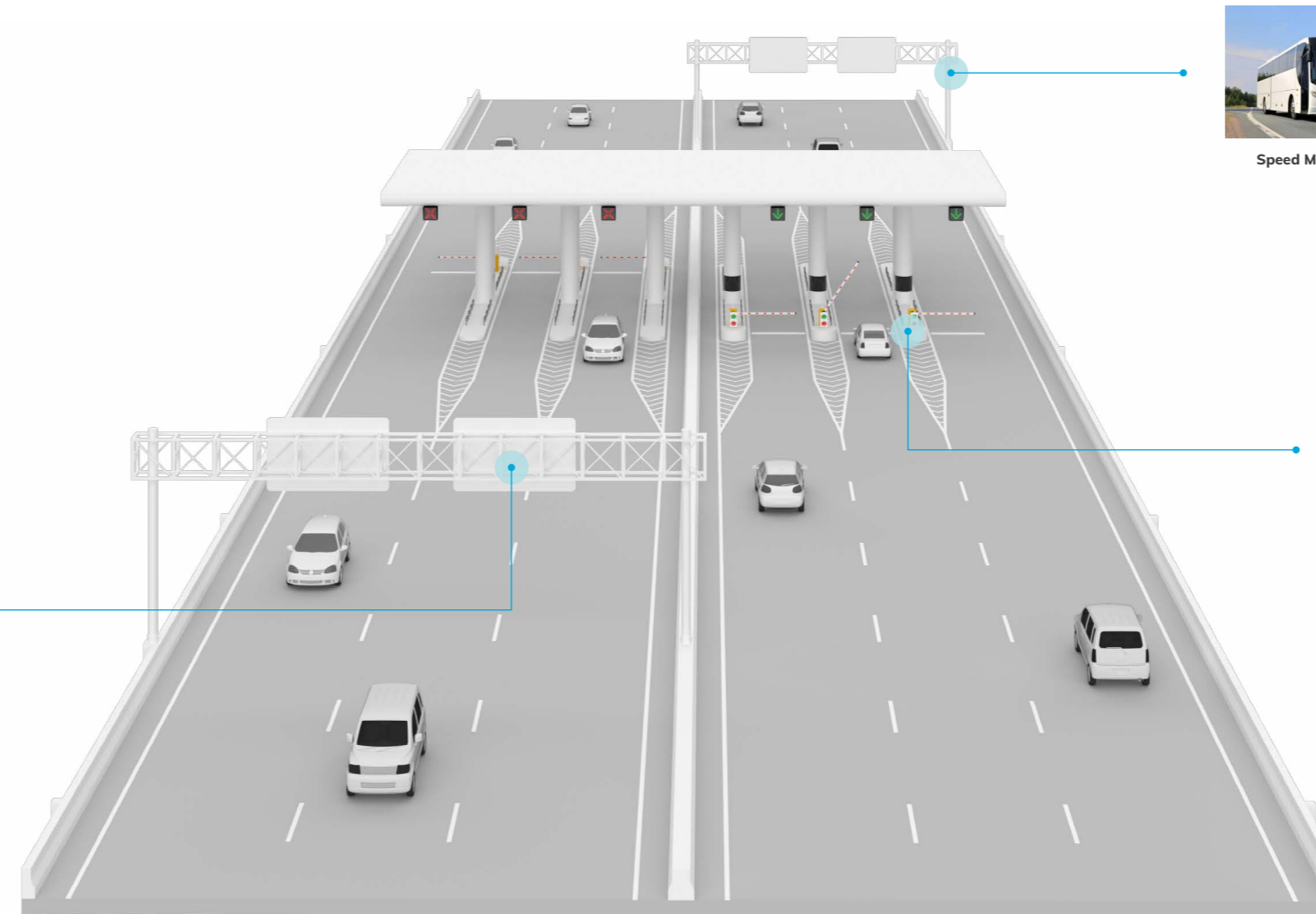
Streamlining management and ensuring a seamless and secure experience.



Traffic Management

- Automatic Intervention for Traffic Incident
- Efficient Traffic Management
- Edge-AI License Plate Recognition

VIVOTEK Traffic Management offers a range of AI-capable cameras equipped with comprehensive APIs for seamless integration. In collaboration with our partners, we deliver high-quality, 24/7 surveillance footage that autonomously identifies and alerts authorities to irregularities, optimizes resource allocation, and substantially mitigates traffic congestion and disruptions, whether on highways or within urban areas.



Traffic Monitoring



IP9165-HT-v2

- 2MP Resolution
- 3.9-10mm
- Deep Learning VCA



IP9181-HT-v2

- 5MP Resolution
- 2.8-8.5mm
- Deep Learning VCA



IP9191-HT-v2

- 8MP Resolution
- 3.9-10mm
- Deep Learning VCA



MS9390-EHV-v2

- 8MP Resolution
- 180° View
- 20m IR illuminators



SD9384-EHL

- 5MP Resolution
- 30x Optical Zoom
- 200M Smart IR



SD9368-EHL

- 2MP Resolution
- 40x Optical Zoom
- 250M Smart IR



FE9391-EHV-v2

- 12MP Resolution
- 360° View
- 20m IR illuminators



Speed Measurement



IP9165-LPC-v2 Kit (Street)

- 2MP Resolution
- 9-50mm / 12-40mm
- 90km/hr



IP9165-LPC-v2 Kit (Highway)

- 2MP Resolution
- 9-50mm / 12-40mm
- 180km/hr



IP9172-LPC Kit (Freeway)

- 2MP Resolution
- 250km/hr
- 20° ~ 40° remote control beam angle



Toll Management



IB9387-LPR-v2

- 5MP Resolution
- Traffic VCA LPR+
- 3.2-10.5 mm
- Stop & Go application



License Plate Capture



License Plate Recognition

111 MPH

Up to 180 KMH / 111 MPH



Anti-glare Capability

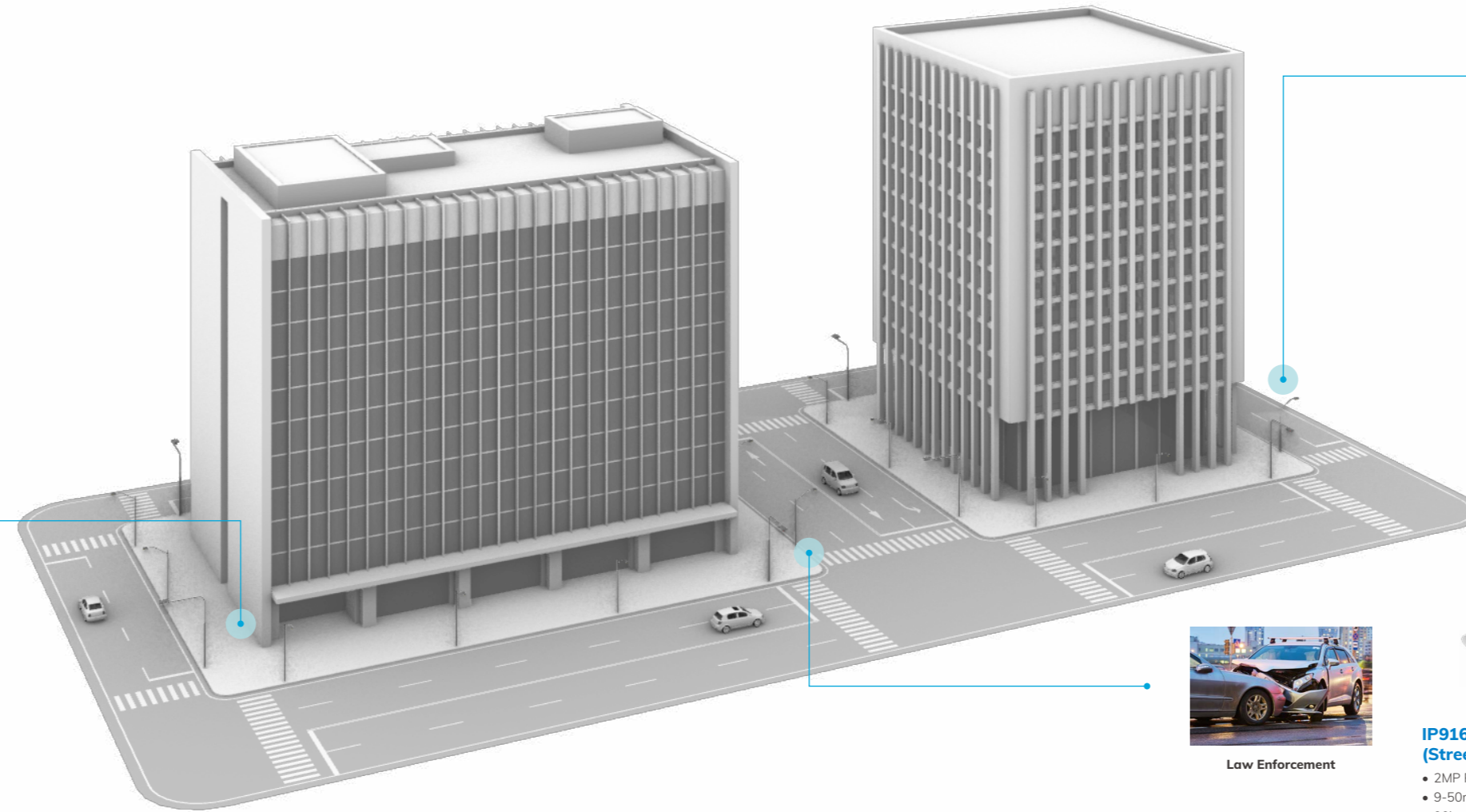


Stop & Go application

City Surveillance

- Automated Law Enforcement with Edge Analytics
- Centralized Monitoring

VIVOTEK City Surveillance not only deters crimes, accidents, and vandalism but also enhances traffic management efficiency while capturing valuable forensic evidence. Our city surveillance solutions, with a range of camera options, ensure continuous and detailed coverage. They are compatible with most VMS platforms and feature embedded AI Analytics for automated detection, providing peace of mind for metropolitan areas.



Street Security



IP9165-HT-v2

- 2MP Resolution
- 3.9-10mm
- Deep Learning VCA



IP9181-HT-v2

- 5MP Resolution
- 2.8-8.5mm
- Deep Learning VCA



IP9191-HT-v2

- 8MP Resolution
- 3.9-10mm
- Deep Learning VCA



MS9390-EHV-v2

- 8MP Resolution
- 180° View
- 20m IR illuminators



VAST Security Station

- LiveView and Playback
- Events and Alarms
- Deep Search

Edge AI Application

- Parking Violation



Monitoring Traffic Flow and Incidents



SD9384-EHL

- 5MP Resolution
- 30x Optical Zoom
- 200M Smart IR



SD9368-EHL

- 2MP Resolution
- 40x Optical Zoom
- 250M Smart IR



IB9387-LPR-v2

- 5MP Resolution
- Traffic VCA LPR+
- 3.2-10.5 mm
- Stop & Go application



FE9391-EHV-v2

- 12MP Resolution
- 360° View
- 20m IR illuminators



Law Enforcement



IP9165-LPC-v2 Kit (Street)

- 2MP Resolution
- 9-50mm / 12-40mm
- 90km/hr



IP9165-LPC-v2 Kit (Highway)

- 2MP Resolution
- 9-50mm / 12-40mm
- 180km/hr



IP9172-LPC Kit (Freeway)

- 2MP Resolution
- 250km/hr
- 20° ~ 40° remote control beam angle



4K Resolution



Object Analytics



Panoramic Surveillance (180°, 360°)



Integration with Milestone and Genetec

Parking and Access Control

• Edge Analytics • Seamless Integration of Vehicle Information

VIVOTEK's Parking & Access Control Solution consists of edge LPR cameras, VAST Security Station (VSS) VMS, and accessories, offering the highest level of secure access control. By automatically matching identified license plates and integrating with third-party access control systems, VIVOTEK's Parking & Access Control Solution reduces labor costs and improves operational efficiency.



Access Control



IP9165-LPC-v2 Kit (Street)

- 2MP Resolution
- 9-50mm / 12-40mm
- 90km/hr



IB9387-LPR-v2

- 5MP Resolution
- Traffic VCA LPR+
- 3.2-10.5 mm
- Stop & Go application



AO-20W

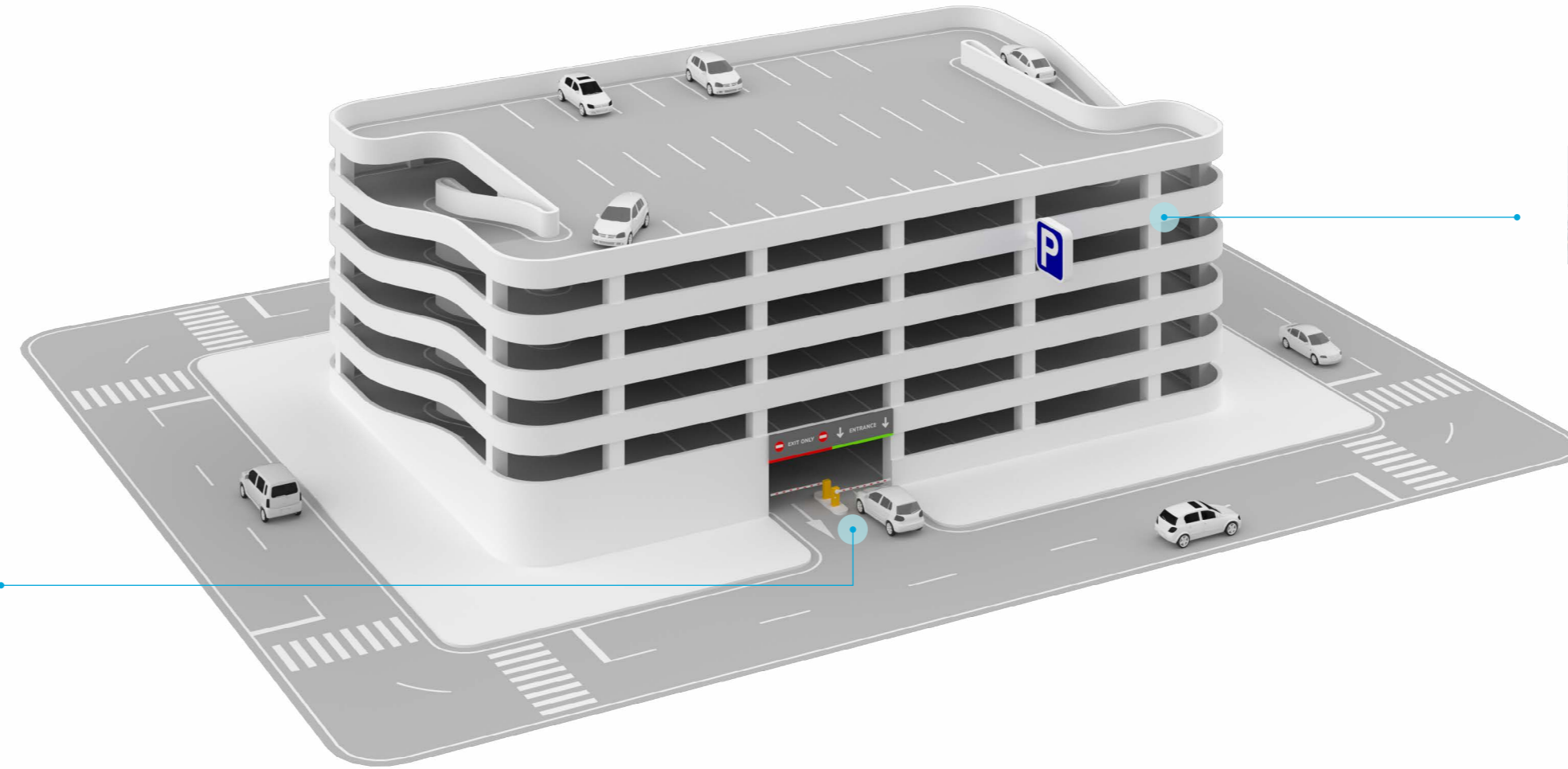
- 26 & 34-bit Wiegand Format
- Ethernet to Wiegand Output Conversion



Edge LPR



LTE Connection

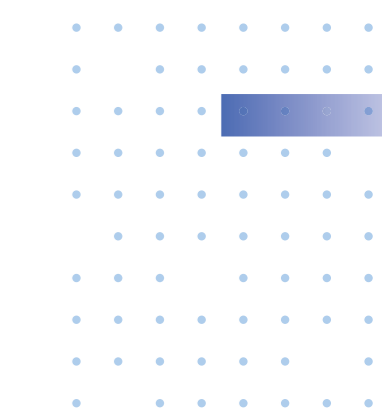


Safeguarding Alarm



AU-001 / AU-003

- IP Horn Speaker
- Live Audio Alerts



Traffic Management Solution



LPR				
IP9165-LPR-v2 Kit		IP9165-LPR-v2		IB9387-LPR-v2
(9-50mm, i-CS, Snap-in IR)	(12-40mm, Snap-in IR)	(9-50mm, i-CS)	(12-40mm)	
<ul style="list-style-type: none"> • 1920x1080 (2MP) • Max Distance 35m • 60 MPH (90 km/hr) • WDR Pro II • Traffic VCA LPR+ • IP68, IK10 • NDAA Compliant 		<ul style="list-style-type: none"> • 1920x1080 (2MP) • 60 MPH (90 km/hr)* • WDR Pro II • Secure Boot, Signed Firmware, Trend Micro IoT Security • Traffic VCA LPR+ • NDAA Compliant <p>* Need to use extra illuminator for night time</p>		<ul style="list-style-type: none"> • 2560x1920 (5MP) • WDR Pro • Secure Boot, Signed Firmware, Trend Micro IoT Security • Traffic VCA LPR+ • IP66, IK10 • NDAA Compliant



LPC		
IP9165-LPC-v2 Kit		IP9181-LPC-v2 Kit
(Highway, 9-50mm, i-CS)	(Highway, 12-40mm)	
<ul style="list-style-type: none"> • 1920x1080 (2MP) • Max Distance 35m* • 110 MPH (180 km/hr) • WDR Pro II • IP68, IK10 <p>* For both reflective and non-reflective plates</p>		<ul style="list-style-type: none"> • 2560x1920 (5MP 4:3) / 2880x1632 (16:9) • Max Distance 20m* • 110 MPH (180 km/hr) • WDR Pro • EIS • IP68, IK10 • NDAA Compliant <p>* For reflective plates, may need extra IR for non-reflective plate</p>

LPC	
IP9191-LPC-v2	IP9181-LPC-v2
<ul style="list-style-type: none"> • 3840x2160 (8MP) / 1920x1080 (2MP 60FPS) • WDR Pro • Secure Boot, Signed Firmware, Trend Micro IoT Security • Deep Learning VCA • NDAA Compliant 	<ul style="list-style-type: none"> • 2560x1920 (5MP) • 110 MPH (180 km/hr) • WDR Pro • Secure Boot, Signed Firmware, Trend Micro IoT Security EIS • NDAA Compliant



360° Fisheye	180° Panoramic	VMS
FE9391-EHV-v2	MS9390-EHV-v2	VAST Security Station (VSS)
<ul style="list-style-type: none"> • 2944x2944 • 20m IR • Deep Learning VCA • Secure Boot, Signed Firmware, Trend Micro IoT Security • IP66, IK10, NEMA 4X • NDAA Compliant 	<ul style="list-style-type: none"> • 4864x1632 (8MP) • 20m IR • WDR Pro • Deep Learning VCA • IP66, IK10 • NDAA Compliant 	<ul style="list-style-type: none"> • View & Recording • LPR Solution • Deep Search • Video Wall Matrix

City Surveillance Solution



180° Panoramic MS9390-EHV-v2	Multi-Sensor MA9322-EHTVL	360° Fisheye FE9391-EHV-v2
<ul style="list-style-type: none"> • 4864x1632 (8MP) • 20m IR • WDR Pro • Deep Learning VCA • IP66, IK10 • NDAA Compliant 	<ul style="list-style-type: none"> • 2688x1920 x 4 • Adjustable Views • 30m IR • WDR Pro • IP66, IK10, NEMA 4X • NDAA Compliant 	<ul style="list-style-type: none"> • 2944x2944 • 20m IR • Deep Learning VCA • Secure Boot, Signed Firmware, Trend Micro IoT Security • IP66, IK10, NEMA 4X • NDAA Compliant



Dome		Bullet	
FD9391-EHTV-v2	FD9389-EHTV-v2	IB9391-EHTV-v2	IB9389-EHTV-v2
<ul style="list-style-type: none"> • 3840x2160 (8MP) • 50m IR • WDR Pro • Deep Learning VCA • Secure Boot, Signed Firmware, Trend Micro IoT Security • IP66, IK10+, NEMA 4X • NDAA Compliant 	<ul style="list-style-type: none"> • 2560x1920 (5MP) • 30m IR • WDR Pro • Secure Boot, Signed Firmware, Trend Micro IoT Security • IP66, IK10 • NDAA Compliant 	<ul style="list-style-type: none"> • 3840x2160 (8MP) • 50m IR • WDR Pro • Deep Learning VCA • Secure Boot, Signed Firmware, Trend Micro IoT Security • IP66, IK10, NEMA 4X • NDAA Compliant 	<ul style="list-style-type: none"> • 2560x1920 (5MP) • 30m IR • WDR Pro • Secure Boot, Signed Firmware, Trend Micro IoT Security • IP66, IK10 • NDAA Compliant



Speed Dome		LPR					
SD9384-EHL	SD9368-EHL	IP9165-LPR-v2 Kit	IB9387-LPR-v2				
<ul style="list-style-type: none"> • 2560x1920 (5MP) • 200m IR • 30x Optical Zoom • Secure Boot, Signed Firmware, Trend Micro IoT Security • Smart Tracking Advanced • IP66, IK10, NEMA 4X • NDAA Compliant 	<ul style="list-style-type: none"> • 1920x1080 (2MP) • 250m IR • 40x Optical Zoom • Secure Boot, Signed Firmware, Trend Micro IoT Security • Smart Tracking Advanced • IP66, IK10, NEMA 4X • NDAA Compliant 	<table border="1"> <tr> <th>(9-50mm, i-CS, Snap-in IR)</th> <th>(12-40mm, Snap-in IR)</th> </tr> <tr> <td> <ul style="list-style-type: none"> • 1920x1080 (2MP) • Max Distance 35m • 60 MPH (90 km/hr) • WDR Pro II • IP68, IK10 • NDAA Compliant </td> <td> <ul style="list-style-type: none"> • 2560x1920 (5MP) • Max Distance 2-6m • WDR Pro • Secure Boot, Signed Firmware, Trend Micro IoT Security • VIVOTEK ANPR with MMC where available • IP66, IK10 • NDAA Compliant </td> </tr> </table>	(9-50mm, i-CS, Snap-in IR)	(12-40mm, Snap-in IR)	<ul style="list-style-type: none"> • 1920x1080 (2MP) • Max Distance 35m • 60 MPH (90 km/hr) • WDR Pro II • IP68, IK10 • NDAA Compliant 	<ul style="list-style-type: none"> • 2560x1920 (5MP) • Max Distance 2-6m • WDR Pro • Secure Boot, Signed Firmware, Trend Micro IoT Security • VIVOTEK ANPR with MMC where available • IP66, IK10 • NDAA Compliant 	<ul style="list-style-type: none"> • 2560x1920 (5MP) • Max Distance 2-6m • WDR Pro • Secure Boot, Signed Firmware, Trend Micro IoT Security • VIVOTEK ANPR with MMC where available • IP66, IK10 • NDAA Compliant
(9-50mm, i-CS, Snap-in IR)	(12-40mm, Snap-in IR)						
<ul style="list-style-type: none"> • 1920x1080 (2MP) • Max Distance 35m • 60 MPH (90 km/hr) • WDR Pro II • IP68, IK10 • NDAA Compliant 	<ul style="list-style-type: none"> • 2560x1920 (5MP) • Max Distance 2-6m • WDR Pro • Secure Boot, Signed Firmware, Trend Micro IoT Security • VIVOTEK ANPR with MMC where available • IP66, IK10 • NDAA Compliant 						



Counting	NVR		VMS
SC9133-RTL	ND9542P	ND9442P	VAST Security Station (VSS)
<ul style="list-style-type: none"> • 1792 x 1792 • AI People Counting • 360° Surround View • IP66, IK10 • NDAA Compliant 	<ul style="list-style-type: none"> • H.265 32-CH Embedded PoE NVR • Core+ AI • Deep Search • 4K IP Camera Video Input and 4K Local Video Output • NDAA Compliant 	<ul style="list-style-type: none"> • H.265 16-CH Embedded PoE NVR • Core+ AI • Deep Search • 4K IP Camera Video Input and 4K Local Video Output • NDAA Compliant 	<ul style="list-style-type: none"> • View & Recording • LPR Solution • Deep Search • Video Wall Matrix

Parking and Access Control



LPR				
IP9165-LPR-v2 Kit		IP9165-LPR-v2		IB9387-LPR-v2
(9-50mm, i-CS, Snap-in IR)	(12-40mm, Snap-in IR)	(9-50mm, i-CS)	(12-40mm)	
<ul style="list-style-type: none"> • 1920x1080 (2MP) • Max Distance 35m • 60 MPH (90 km/hr) • WDR Pro II • IP68, IK10 • NDAA Complaint 		<ul style="list-style-type: none"> • 1920x1080 (2MP) • 60 MPH (90 km/hr)* • WDR Pro II • Secure Boot, Signed Firmware, Trend Micro IoT Security • NDAA Complaint <p>* Need to use extra illuminator for night time</p>		<ul style="list-style-type: none"> • 2560x1920 (5MP) • WDR Pro • Secure Boot, Signed Firmware, Trend Micro IoT Security • VIVOTEK ANPR with MMC where available • IP66, IK10 • NDAA Complaint



Network Horn Speaker	Wiegand Converter	VMS
AU-001 / AU-003	AO-20W	VAST Security Station (VSS)
<ul style="list-style-type: none"> • 20 W • 106 dB • Robust aluminum, IP-66 • PoE+, IEEE 802.3at 	<ul style="list-style-type: none"> • Digital input x 8 • Digital output x 4: relay output x1 & digital output x3 • Easy Integration into any Access Control System • Supports Ethernet to Wiegand Output Conversion • Supports 26-bit and 34-bit Wiegand Format 	<ul style="list-style-type: none"> • View & Recording • LPR Solution • Deep Search • Video Wall Matrix

Available LPR Analytics

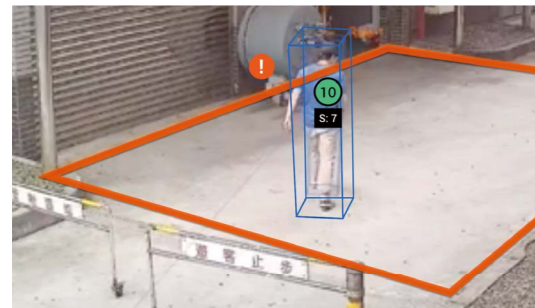
	VIVOTEK ANPR	VIVOTEK ANPR with MMC
Features		
Support countries and states	140+	200+
Vehicle classification	6	6
Make recognition	29+	400+
Model recognition	not available	7000+
Color recognition	9	11
Integration		
TCP Server	Yes	Yes
TCP Client	Yes	Yes
FTP	Yes	Yes
.xml format	Yes	Yes
.json format	Yes	Yes
Video Management System	VAST Security Station, Milestone XProtect, Nx Witness, ONVIF Event	VAST Security Station, Milestone XProtect, Nx Witness
Products	IP9165-LPR-v2 IP9165-LPR-v2 Kit (Street)	

Smart VCA



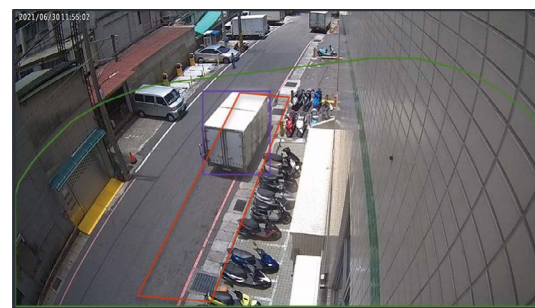
Smart Motion Detection

Accurately identifies activities, regardless of variations in lighting, shadows, adverse weather, or other external factors. Smart Motion Detection significantly decreases the occurrence of false alarms, ensuring ongoing and intelligent protection of individuals.



AI-Powered Video Analytics

Our onboard Smart VCA suite features 8 advanced video analytics, empowering smart-edge cameras with superior capabilities for precise people and object detection. Its flexible configuration allows it to adapt to a wide range of user application needs.



Parking Violation Detection

Our Parking Violation Detection system can identify vehicles that have stopped in restricted areas. This technology is applicable in various scenarios, such as cars parking in unauthorized zones at the airport, bus and train stations, and bicycle lanes. By recognizing and flagging illegally parked vehicles, this system contributes to reducing traffic congestion.



Crowd Detection

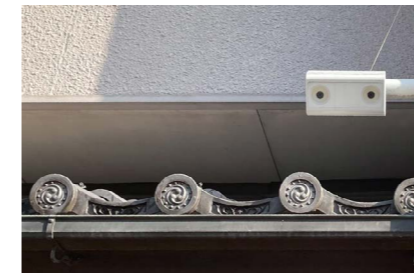


Unattended Object Detection



Restricted Zone Detection

Success Cases



Japan
City of Ise



South Africa
Garneton Toll Route



South Africa
N4 Toll Route



Poland
Traffic Monitoring System



Belarus
New Borovaya



Argentina
Red-Light Enforcement System



Taiwan
Parking Lot



Taiwan
Taipei Main Station

VIVOTEK

A Delta Group Company

Distributed by:



www.vivotek.com

VIVOTEK Inc.

6F, No.192, Liancheng Rd., Zhonghe Dist.,
New Taipei City 235, Taiwan
| **T** +886-2-82455282 | **E** sales@vivotek.com

VIVOTEK Japan

〒 105-0012 東京都港区芝大門 2-1-14,
デルタ芝大門ビル
| **T** +81-3-5733-1280 | **E** salesjp@vivotek.com

VIVOTEK USA

2050 Ringwood Avenue, San Jose, CA 95131
| **T** 408-773-8686 | **E** salesusa@vivotek.com

VIVOTEK India

602, Best Sky Tower, Plot No. F-5, Netaji Subhash Place,
Pitampura, New Delhi-110034
| **T** +91-11-45137465 | **E** salesindia@vivotek.com

VIVOTEK EMEA

Zandsteen 15, 2132 MZ Hoofddorp,
The Netherlands
| **T** +31(0)20-800-3817 | **E** saleseurope@vivotek.com

VIVOTEK LATAM

Av. Pdte. Masaryk 101, Piso 10 Oficina 1002, Polanco V Sección,
11560, Miguel Hidalgo, CDMX.
| **T** + 52 55 5531 4184 | **E** saleslatam@vivotek.com

