

235

台灣 新北市
中和區連城路192號6樓
晶睿通訊股份有限公司
JOANNE CHANG



JOANNE CHANG
 VIVOTEK INC
 6TH FL, 192 LIEN CHENG RD
 CHUNG HO DISTRICT
 NEW TAIPEI
 235 TAIWAN

Date: 2019/01/14
 Subscriber: 100504413
 PartySite: 125336
 File No: E324690
 Project No: 4788716094
 PD No: 19002514
 Type: R
 PO Number:

Subject: **Procedure And/Or Report Material**

The following material resulting from the investigation under the above numbers is enclosed.

Issue

<u>Date</u>	<u>Vol</u>	<u>Sec</u>	<u>Pages</u>	<u>Revised Date</u>
	X2		Index Page(s)	
2018/12/17	X2	A144	Cert of Compliance	
2018/12/17	X2	A144	Add New Proc/Report Sect	

If there are illegible image in this package legible image may be found online Via My Home@UL under My UL reports/CDA".

Please file revised pages and illustrations in place of material of like identity. New material should be filed in its proper numerical order.

NOTE: Follow-Up Service Procedure revisions DO NOT include Cover Pages, Test Records and Conclusion Pages. Report revisions DO NOT include Authorization Pages, Indices, Section General Pages and Appendixes.

Please review this material and report any inaccuracies to UL's Customer Service Professionals. Contact information for all of UL's global offices can be found at <http://ul.com/aboutul/locations>.

If you'd like to receive updated materials FASTER, UL offers electronic access and/or delivery of this material. For more details, contact UL's Customer Service Professionals as shown above.

This material is provided on behalf of UL LLC(UL) or any authorized licensee of UL.

TPI File

File		Volume	Page	Date:
E324690	Index	X2	1	2019-01-10

Index

Product Type	Model/Type Reference	Report Reference #	Status
Outdoor Network Camera	IP8330, IP8332	E324690-A4-UL	
Network Camera	IP8162, IP8162P, CIVS-IPC-6000P	E324690-A9-UL	
Network Camera	FD8162, FD8162V, FD8362, FD8362E, CIVS-IPC-6020, CIVS-IPC-6030, CIVS-IPC-3530, CIVS-IPC-3535 and CIVS-IPC-3520	E324690-A10-UL	
Network Video Recorder	NR8201, NR8301	E324690-A12-UL	
Network Camera	IP8352	E324690-A13-UL	
Network Camera	FE8171V	E324690-A15-UL	
Video Encoder, 4 Port, Standalone; Video Encoder, 8 Port, Standalone	CIVS-SENC-4P-K9, CIVS-SENC-8P-K9, CIVS-SENC-4P, CIVS-SENC-8P	E324690-A16-UL	
Network Camera	1) MD8562 2) MD8562D	E324690-A17-UL	
Network Camera	IP8362	E324690-A18-UL	
Network Camera	IK-WD14A, IK-WR14A	E324690-A21-UL	
Outdoor Dome Network Camera	FD8372, CIVS-IPC-7030, CIVS-IPC-7030E	E324690-A22-UL	
Network Camera	FE8172, FE8172V, FE8173, FE8174, FE8174V, SF8174, SF8174V	E324690-A25-UL	
Network Camera	IP8332-C	E324690-A28-UL	
Outdoor Speed Dome Network Camera	SD83XXE (X = 0-9, A-Z or blank), CIVS-IPC-6930, CIVS-IPC-2830, CIVS-IPC-2835	E324690-A29-UL	
Network Camera	IP8172, IP8172P	E324690-A30-UL	
Network Camera	CIVS-IPC-6400	E324690-A31-UL	
Network Camera	CIVS-IPC-3421V	E324690-A33-UL	
Indoor Dome Network Camera	FD8136-FXX, FD8166-FXX (The X=0-9, A-Z, a-z or blank for marketing purpose)	E324690-A34-UL	
Network Camera	IK-WR04A, IK-WD04A	E324690-A36-UL	
Network Camera	IP8372	E324690-A37-UL	
IP Camera VGA	S5003FDXXXXXXXXXXXXX (X can be 0-9, A-Z, a-z, blank or "-", and no impact safety related critical components and construction.)	E324690-A38-UL	
Network Camera	IK-WB81A	E324690-A39-UL	
1080P Fixed Dome Network Camera	FD8163, FD8363	E324690-A40-UL	
Network Camera	CIVS-IPC-6050	E324690-A44-UL	
Network Camera	FD8355EHV, FD8365EHV, FD8155H, FD8165H	E324690-A49-UL	
Network Camera	IK-WD05A, IK-WR05A	E324690-A50-UL	
Network Camera	FD8371EV	E324690-A51-UL	
Network Camera	CIVS-IPC-6400E	E324690-A52-UL	
Network Camera	IP8355EH, IP8365EH	E324690-A53-UL	
Network Camera	CIVS-IPC-6500PD	E324690-A54-UL	
Network Camera	(1) CIVS-IPC-7530PD (2) CIVS-IPC-7030P	E324690-A56-UL	
Network Camera	CIVS-IPC-3050, MD8531H-FXX, MD8531H-	E324690-A58-UL	

File		Volume	Page	Date:
E324690	Index	X2	2	2019-01-10

	FXX(W)(X= 0-9, a-z, A-Z, "-", "/" or blank for marketing purpose)		
Network Camera	IP8155HP, IP8165HP, IP8166	E324690-A59-UL	
Network Camera	FD8152V-FX(B), FD8152V-FX(W) (X=0-9,a-z,A-Z, "-", "/" or blank for marketing purpose: (B) Black for enclosure color; (W) White for enclosure color).	E324690-A60-UL	
Network Camera	FE8181, FE8181V, FE8191 ,FE8391-V, CIVS-IPC-7070, FE8181V (VVPR)	E324690-A61-UL	
Network Video Recorder	ND8401	E324690-A62-UL	
Camera	IB8367, IB8367-R, IB8367-T, IB8367-RT	E324690-A63-UL	
Network Camera	SD8161, SD8161-XX (X = 0-9, a-z, A-Z or blank for marketing purpose)	E324690-A64-UL	
Network Camera	IB8338-H, IB8338-HR	E324690-A66-UL	
Network Camera	FD8173-H, FD8373-EHV	E324690-A67-UL	
Network Camera	FD8181, FD8381-EV	E324690-A68-UL	
Network Camera	IK-WD31A, IK-WR31A	E324690-A71-UL	
Network Camera	IB8373-EH, IK-WB82A	E324690-A72-UL	
Network Camera	FD8167, FD8167-T, FD8138H (indoor use) FD8367-V, FD8367-TV, FD8338-HV (outdoor use)	E324690-A73-UL	
Network Camera	IP816A-HP, IP816A-LPC	E324690-A74-UL	
Network Camera	IK-WF51A, IK-WF51R	E324690-A75-UL	
Stereo Camera	SC8131	E324690-A76-UL	
IP 360 Dome Camera (5M)	V6050FDxxxxxxx, V6050FDWxxxxxxx (x =0-9, a-z, space or "-" for marketing purpose).	E324690-A77-UL	
Network Camera	CC8370-HV	E324690-A78-UL	
Network Camera	CIVS-IPC-3630, CIVS-IPC-6630, CIVS-IPC-3620, CIVS-IPC-6620	E324690-A79-UL	
Network Camera	IP9171-HP, IP9181-H	E324690-A80-UL	
Network Camera	FD9171-HT, FD9371-HTV, FD9371-EHTV, FD9181-HT, FD9381-EHTV, FD9381-HTV, IK-WD51A, IK-WR51A	E324690-A81-UL	
Network Camera	IB9371-HT, IB9371-EHT, IB9381-HT, IB9381-EHT	E324690-A82-UL	
Network Camera	FE8182	E324690-A83-UL	
Network Camera	FD816C-HF2, FD816CA-HF2	E324690-A84-UL	
Communication IP Camera	KX-NTV150XX (X=0~9, A~Z, a~z, space or "-" for marketing purpose)	E324690-A85-UL	
IP Video Doorphone	KX-NTV160XX (X=0~9, A~Z, a~z, space or "-" for marketing purpose)	E324690-A86-UL	
Network Camera	(1) MD8563-EHFX (X= 0-9, a-z, A-Z, "-", "/" or blank for marketing purpose) (2) MD8563-DEHX (X=0-9, A-Z, a-z, "-", "/" or blank for marketing purpose)	E324690-A88-UL	
Network Camera	VC8101	E324690-A90-UL	
Network Camera	MV21-HW, MV71-HW	E324690-A91-UL	
Network Video Recorder	ND9541, ND9441	E324690-A95-UL	
Network Camera	SD9361-XXX, SD9362-XXX (X = 0-9, a-z, A-Z or blank)	E324690-A96-UL	
Network Camera	SD9364-EHL, SD9364-EH, SD9363-EHL and BS6366-EH	E324690-A97-UL	
Network Camera	MS8391-EV	E324690-A98-UL	

File		Volume	Page	Date:
E324690	Index	X2	3	2019-01-10

Network Camera	FD8166A-N	E324690-A99-UL	
Network Camera	IZ9361-EH	E324690-A100-UL	
Network Camera	SD9161-H	E324690-A101-UL	
Network Camera	(1) FE9182-H (2) FE9382-EHV, FE9582-EHNV	E324690-A103-UL	
Network Camera	(1) SC8132 (2) SC8133	E324690-A105-UL	
NETWORK ATTACHED STORAGE	NR9681, NR9581, SR9681, SR9581	E324690-A106-UL	
Network Camera	CD8371-HNVFX (X=0-9, A-Z, a-z, space or "-" for marketing purpose), CD8371-HNTV	E324690-A107-UL	
Network Camera	FD8177-H, FD8167A, FD8179-H, FD8169A (indoor use) FD8377-HV, FD8367A-V, FD8379-HV, FD8369A-V (outdoor use)	E324690-A108-UL	
Network Camera	SD9365-EH, SD9366-EHL, SD9366-EH	E324690-A109-UL	
Network Camera	MS8392-EV	E324690-A110-UL	
Network Video Recorder	ND9441P, ND9541P	E324690-A111-UL	
Network Camera	MD8565-N	E324690-A112-UL	
Network Camera	J-WB51A	E324690-A113-UL	
Network Camera	IB8379-H, IB8377-H, IB8367A, IB8369A	E324690-A114-UL	
Network Camera	CIVS-IPC-8000P	E324690-A115-UL	
Network Camera	CIVS-IPC-8400	E324690-A116-UL	
Network Camera	CIVS-IPC-8020, CIVS-IPC-8030, CIVS-IPC-8020-S, CIVS-IPC-8030-S	E324690-A117-UL	
Network Camera	MD8564-EH	E324690-A118-UL	
Network Camera	FD8366-V	E324690-A119-UL	
Network Camera	(1) FE9191 (2) FE9391-EV	E324690-A120-UL	
Network Camera	MA8391-ETV	E324690-A121-UL	
Network Camera	CC8371-HV	E324690-A122-UL	
Network Camera	IP9191-HP, IP9191-HT	E324690-A123-UL	
Network Camera	FD9365-EHTV, FD9365-HTV, FD8365-HTV-v2	E324690-A124-UL	
Network Camera	MS9390-HV	E324690-A125-UL	
Network Camera	MV12W-HW, MV12WE-HW, MV12N-HW	E324690-A126-UL	
Network Camera	(A) IP8160; (B) IP8160-W	E324690-A127-UL	
Network Camera	CIVS-IPC-8930	E324690-A128-UL	
Network Camera	CIVS-IPC-8070	E324690-A129-UL	
Network Camera	FD9165-HT	E324690-A130-UL	
Network Camera	FD9367-HTV, FD9367-EHTV, FD9367-HV, FD9167-HT, FD9167-H, FD836B-HTV-V2.	E324690-A131-UL	
Network Video Recorder	ND8212W, ND8312	E324690-A132-UL	
Network Camera	IB9367-H, IB9367-HT, IB9367-EH, IB9367-EHT	E324690-A133-UL	
Network Camera	CIVS-IPC-8620, CIVS-IPC-8620-S	E324690-A134-UL	
Network Camera	(1) IB9365-HT (2) IB9365-EHT	E324690-A135-UL	

File		Volume	Page	Date:
E324690	Index	X2	4	2019-01-10

Network Camera	CIVS-IPC-8630, CIVS-IPC-8630-S	E324690-A136-UL	
Network Camera	FD8177-HT (indoor use) FD8377-EHTV, FD8377-HTV (outdoor use)	E324690-A137-UL	
Network Camera	(1) IB8377-HT (2) IB8377-EHT	E324690-A138-UL	
Network Camera	FE9180-H	E324690-A139-UL	
Network Camera	IP9167-HP, IP9167-HT	E324690-A140-UL	
Network Camera	FD9391-EHTV	E324690-A141-UL	
Network Camera	IB9391-EHT	E324690-A142-UL	
Network Video Recorder	1) ND9322P; 2) ND9424P	E324690-A144-UL	
Network Camera	MA9321-EHTV	E324690-A145-UL	
Network Camera	1) IB9387-EH, 2) IB9387-H	E324690-A148-UL	

CERTIFICATE OF COMPLIANCE

Certificate Number 20190114-E324690
Report Reference E324690-A144-UL
Issue Date 2019-JANUARY-14

Issued to: VIVOTEK INC
6TH FL, 192 LIEN CHENG RD
CHUNG HO DISTRICT
NEW TAIPEI
235 TAIWAN

**This certificate confirms that
representative samples of**

INFORMATION TECHNOLOGY EQUIPMENT INCLUDING
ELECTRICAL BUSINESS EQUIPMENT

Network Video Recorder

- 1) ND9322P;
- 2) ND9424P

Have been investigated by UL in accordance with the
Standard(s) indicated on this Certificate.

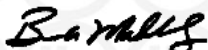
Standard(s) for Safety: UL 60950-1, - (Information Technology Equipment - Safety -
Part 1: General Requirements)
CAN/CSA C22.2 No. 60950-1-07, -(Information Technology
Equipment - Safety - Part 1: General Requirements)

Additional Information: See the UL Online Certifications Directory at
<https://iq.ulprospector.com> for additional information.

This *Certificate of Compliance* does not provide authorization to apply the UL Mark. Only the UL Follow-Up
Services Procedure provides authorization to apply the UL Mark.

Only those products bearing the UL Mark should be considered as being UL Certified and covered under UL's
Follow-Up Services.

Look for the UL Certification Mark on the product.



Bruce Mahrenholz, Director North American Certification Program

UL LLC

Any information and documentation involving UL Mark services are provided on behalf of UL LLC (UL) or any authorized licensee of UL. For questions, please
contact a local UL Customer Service Representative at <http://ul.com/aboutul/locations/>



UL TEST REPORT AND PROCEDURE

Standard:	UL 60950-1, 2nd Edition, 2014-10-14 (Information Technology Equipment - Safety - Part 1: General Requirements) CAN/CSA C22.2 No. 60950-1-07, 2nd Edition, 2014-10 (Information Technology Equipment - Safety - Part 1: General Requirements)
Certification Type:	Listing
CCN:	NWQQ, NWQQ7 (Information Technology Equipment Including Electrical Business Equipment)
Product:	Network Video Recorder
Model:	1) ND9322P; 2) ND9424P
Rating:	I/P: 1) 100-240Vac, 50-60Hz, 3.5A; 2) 100-240Vac, 50-60Hz, 6-3A.
Applicant Name and Address:	VIVOTEK INC 6TH FL, 192 LIEN CHENG RD CHUNG HO DISTRICT NEW TAIPEI 235 TAIWAN

This is to certify that representative samples of the products covered by this Test Report have been investigated in accordance with the above referenced Standards. The products have been found to comply with the requirements covering the category and the products are judged to be eligible for Follow-Up Service under the indicated Test Procedure. The manufacturer is authorized to use the UL Mark on such products which comply with this Test Report and any other applicable requirements of UL LLC ('UL') in accordance with the Follow-Up Service Agreement. Only those products which properly bear the UL Mark are considered as being covered by UL's Follow-Up Service under the indicated Test Procedure.

The applicant is authorized to reproduce the referenced Test Report provided it is reproduced in its entirety.

Any information and documentation involving UL Mark services are provided on behalf of UL LLC (UL) or any authorized licensee of UL.

Prepared by: Eddie Chen

Reviewed by: Nate Hsu

Supporting Documentation

The following documents located at the beginning of this Procedure supplement the requirements of this Test Report:

- A. Authorization - The Authorization page may include additional Factory Identification Code markings.
- B. Generic Inspection Instructions -
 - i. Part AC details important information which may be applicable to products covered by this Procedure. Products described in this Test Report must comply with any applicable items listed unless otherwise stated in the body of this Test Report.
 - ii. Part AE details any requirements which may be applicable to all products covered by this Procedure. Products described in this Test Report must comply with any applicable items listed unless otherwise stated in the body of each Test Report.
 - iii. Part AF details the requirements for the UL Certification Mark which is not controlled by the technical standard used to investigate these products. Products are permitted to bear only the Certification Mark(s) corresponding to the countries for which it is certified, as indicated in each Test Report.

Product Description

Consist with electronic components mounted on PWB, bulid-in R/C power supply then housed in metal chassis.

Model Differences

See Misc. 7-01 for detail

Technical Considerations

- Equipment mobility : movable
- Connection to the mains : pluggable A
- Operating condition : continuous
- Access location : operator accessible
- Over voltage category (OVC) : OVC II
- Mains supply tolerance (%) or absolute mains supply values : +10%, -10% (Manufacturer declared)
- Tested for IT power systems : No
- IT testing, phase-phase voltage (V) : N/A
- Class of equipment : Class I (earthed)
- Considered current rating of protective device as part of the building installation (A) : 20
- Pollution degree (PD) : PD 2
- IP protection class : IP X0
- Altitude of operation (m) : up to 2000
- Altitude of test laboratory (m) : up to 2000
- Mass of equipment (kg) : Approx. 4.03 kg for model ND9322P; Approx. 4.11 kg for model ND9424P
- The product was submitted and evaluated for use at the maximum ambient temperature (T_{ma}) permitted by the manufacturer's specification of: 40°C
- The means of connection to the mains supply is: Pluggable A, Detachable power cord
- The product is intended for use on the following power systems: TN
- The equipment disconnect device is considered to be: Appliance inlet
- The following circuit locations (with circuit/schematic designation) were investigated as a limited

<p>power source (LPS): All output ports</p> <ul style="list-style-type: none"> ▪ The following are available from the Applicant upon request: Installation (Safety) Instructions / Manual ▪ LEDs provided in the product are considered low power devices: Yes ▪ The PoE port was considered as SELV circuit due to not routing to outside plants. 	
<p>Additional Information</p> <p>N/A</p>	
<p>Additional Standards</p> <p>The product fulfills the requirements of: N/A</p>	
<p>Markings and instructions</p>	
Clause Title	Marking or Instruction Details
Power rating - Ratings	Ratings (voltage, frequency/dc, current)
Power rating - Company identification	Listee's or Recognized company's name, Trade Name, Trademark or File Number
Power rating - Model	Model Number
Installation instruction statements	Installation instructions shall note following statements or equivalent: " The device is to be connected only to PoE networks without routing to the outside plant."
<p>Special Instructions to UL Representative</p> <p>N/A</p>	

Production-Line Testing Requirements						
<u>Electric Strength Test Special Constructions - Refer to Generic Inspection Instructions, Part AC for further information.</u>						
Model	Component	Removable Parts	Test probe location	V rms	V dc	Test Time, s
--	--	--	--	--	--	--
<u>Earthing Continuity Test Exemptions - This test is not required for the following models:</u>						
All models in this report						
<u>Electric Strength Test Exemptions - This test is not required for the following models:</u>						
All models in this report						
<u>Electric Strength Test Component Exemptions - The following solid-state components may be disconnected from the remainder of the circuitry during the performance of this test:</u>						
--						
<u>Sample and Test Specifics for Follow-Up Tests at UL</u>						
Model	Component	Material	Test	Sample(s)	Test Specifics	
--	--	--	--	--	--	

1.5.1	TABLE: list of critical components					Pass
Object/part or Description	Manufacturer/ trademark	type/model	technical data	Product Category CCN(s)	Required Marks of Conformity	Supplement ID
01. Power adaptor (Optional)	Interchangeable	Interchangeable	O/P: DC12V, min. 1A, min. Tma 40 degree C, LPS, Class II.	QQJQ	UL	
01a. Power adaptor (Optional)	Interchangeable	Interchangeable	O/P: DC12V, min. 1A, min. Tma 40 degree C, LPS, Class II.	QQGQ	UL	
01b. Power adaptor (Alternate) (Optional)	Interchangeable	Interchangeable	O/P: DC12V, min. 1A, min. Tma 40 degree C, Class 2.	EPBU	UL	
02. Power injector (Optional)	Interchangeable	Interchangeable	O/P: DC48V, min. 0.32A, min. Tma 40 degree C, LPS.	QQJQ	UL	
02a. Power injector (Alternate) (Optional)	Interchangeable	Interchangeable	O/P: DC48V, min. 0.32A, min. Tma 40 degree C, LPS.	QQGQ	UL	
03. Label	Interchangeable	Interchangeable	Min. 50 degree C, if max surface temperature not specified.	PGDQ2 or PGJ12	UL	
04. Enclosure	Interchangeable	Interchangeable	Two pieces construction, secured together by screws.	--	--	
04-1. Plastic cover	Chi Mei Corporation	PC-110(+)	HB or better, overall see enclosure 4-01 for details.	QMFZ2	UL	
05. PWB	Interchangeable	Interchangeable	V-1 or better, min. 105 degree C.	ZPMV2	UL	
06. Transformer for PoE (T7)	Dong Guan TNK Industry Co., Ltd.	TSE187	Min. 105 degree C.	--	--	
07. Connectors and Receptacles (SELV)	Interchangeable	Interchangeable	Metal/Plastic Copper alloy pins housed in bodies of plastic rated V-2 minimum.	QMFZ2	UL	
07a. Connectors and Receptacles (SELV) (Alternate)	Interchangeable	Interchangeable	Minimum 30V.	ECBT2, RTRT2	UL	
07b. Connectors and Receptacles (SELV)	Interchangeable	Interchangeable	SELV.	DUXR, DUXR2	UL	

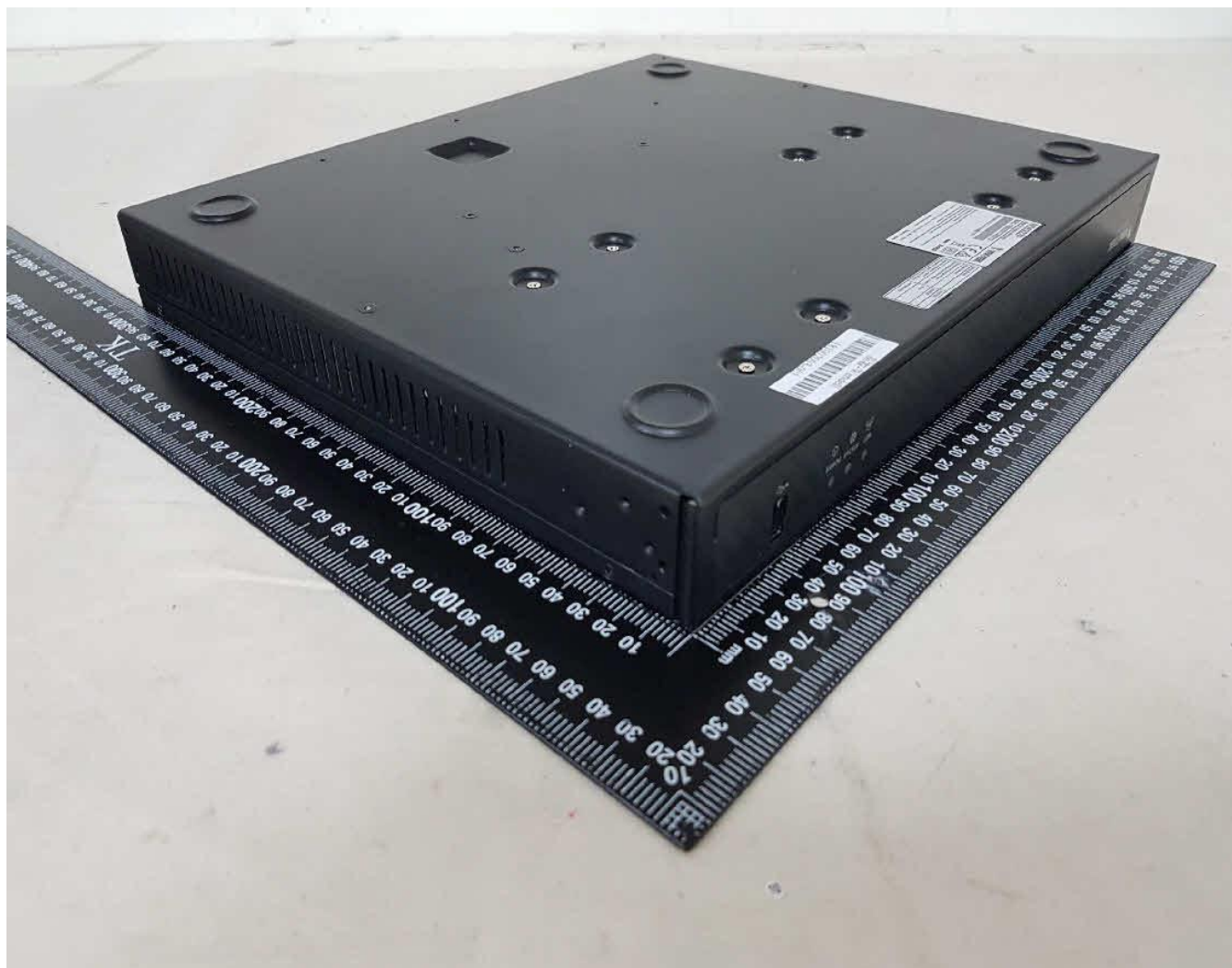
(Alternate)						
08. Wiring, internal (SELV circuits)	Interchangeable	Interchangeable	FEP, PTFE, PVC, TFE, neoprene, polyimide or marked VW-1 or FT-1, min 30V, 80 degree C	AVLV2	UL	
08a. Wiring, internal (SELV circuits) (Alternate)	Interchangeable	Interchangeable	FEP, PTFE, PVC, TFE, neoprene or polyimide.	--	--	
09. Interconnecting Cable (Optional)	Interchangeable	Interchangeable	Maximum length 3.05 m. FEP, PTFE, PVC, TFE, neoprene, polyimide or marked VW-1 or FT-1. Minimum 80 degree C. Minimum 30 V.	AVLV2 DUZX, DUXR, DUXR2	UL	
09a. Interconnecting Cable (Optional) (Alternate)	Interchangeable	Interchangeable	Detachable, 30V minimum, 60 degree C minimum, 3.05 m long maximum, marked VW-1 or FT-1.	AVLV2	UL	
09b. Interconnecting Cable (Optional) (Alternate)	Interchangeable	Interchangeable	Type CMP or CMR or CMG or CM or CMX or CMUC or CMH, 3.05 m long maximum.	DUXR	UL	
09c. Interconnecting Cable (Optional) (Alternate)	Interchangeable	Interchangeable	Type CMP or CMR or CMG or CM or CMX or CMUC or CMH, 3.05 m long maximum.	DUZX	UL	
09d. Interconnecting Cable (Optional) (Alternate)	Interchangeable	Interchangeable	Maximum length 3.05 m. FEP, PTFE, PVC, TFE, neoprene, polyimide or marked VW-1 or FT-1. Minimum 80 degree C. Minimum 30 V.	AVLV2 DUZX, DUXR, DUXR2	UL	

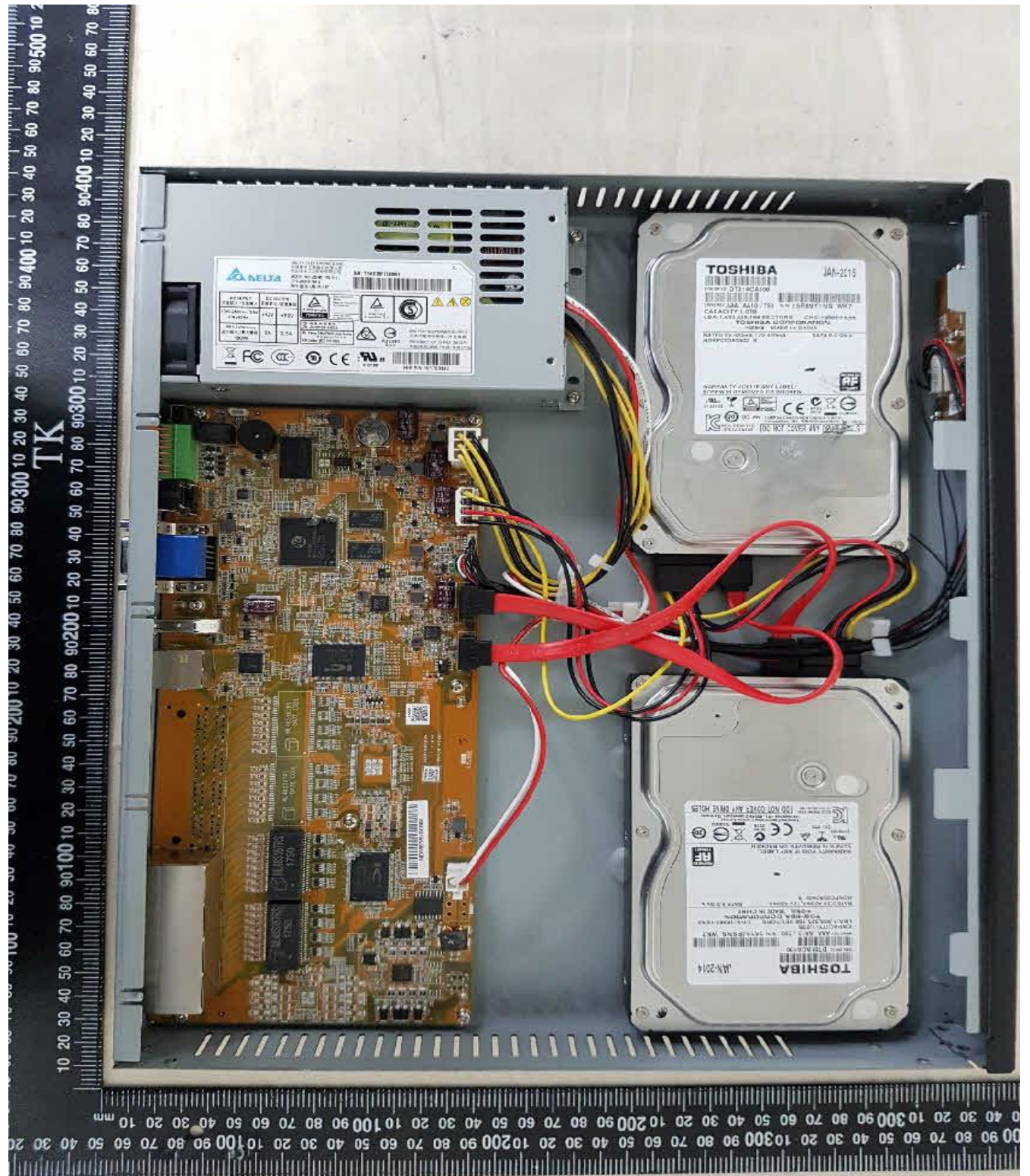
Enclosures

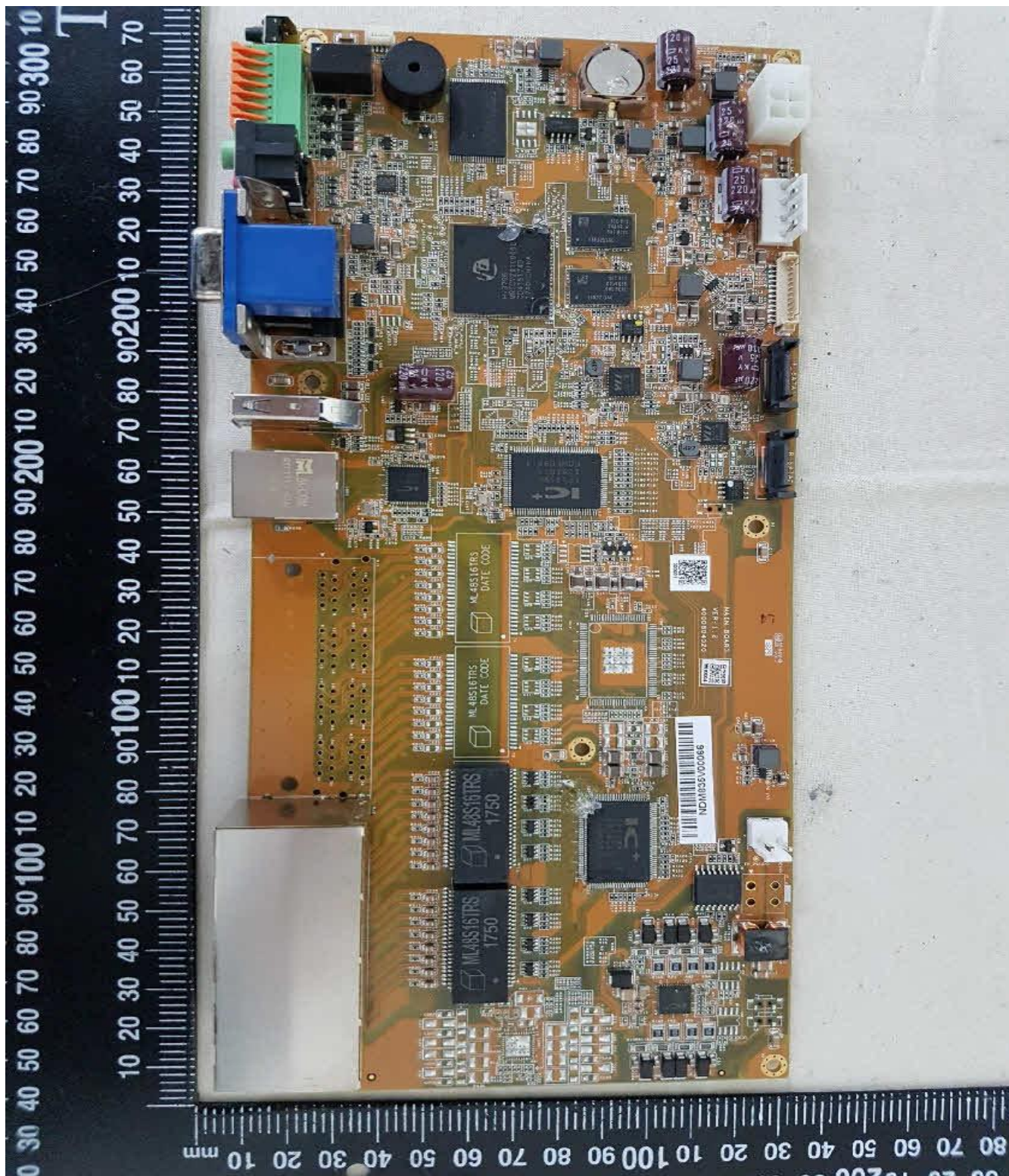
<u>Type</u>	<u>Supplement Id</u>	<u>Description</u>
Photographs	3-01	Overall View 1 (Model ND9322P)
Photographs	3-02	Overall View 2 (Model ND9322P)
Photographs	3-03	Overall View 3 (Model ND9322P)
Photographs	3-04	Internal View 1 (Model ND9322P)
Photographs	3-05	Main Board View 1 (Model ND9322P)
Photographs	3-06	Main Board View 2 (Model ND9322P)
Photographs	3-07	Overall View 1 (Model ND9424P)
Photographs	3-08	Overall View 2 (Model ND9424P)
Photographs	3-09	Overall View 3 (Model ND9424P)
Photographs	3-10	Internal View 1 (Model ND9424P)
Photographs	3-11	Mainboard View 1 (Model ND9424P)
Photographs	3-12	Mainboard View 2 (Model ND9424P)
Photographs	3-13	LED board 1
Photographs	3-14	LED board 2
Photographs	3-15	SELV board 1
Photographs	3-16	SELV board 2
Diagrams	4-01	Enclosure Dimensions
Diagrams	4-02	Heatsinks (for U8)
Miscellaneous	7-01	Model difference











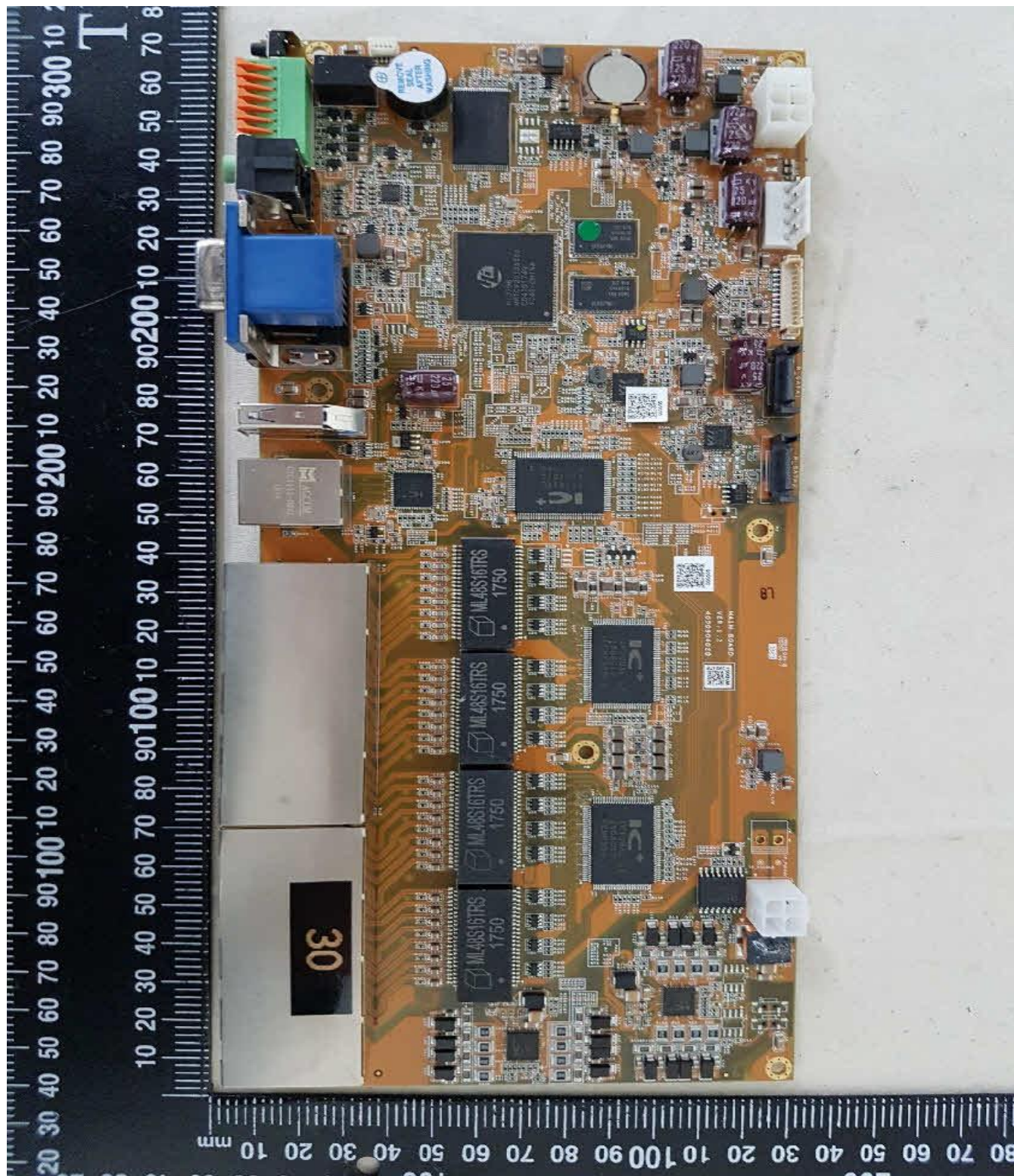


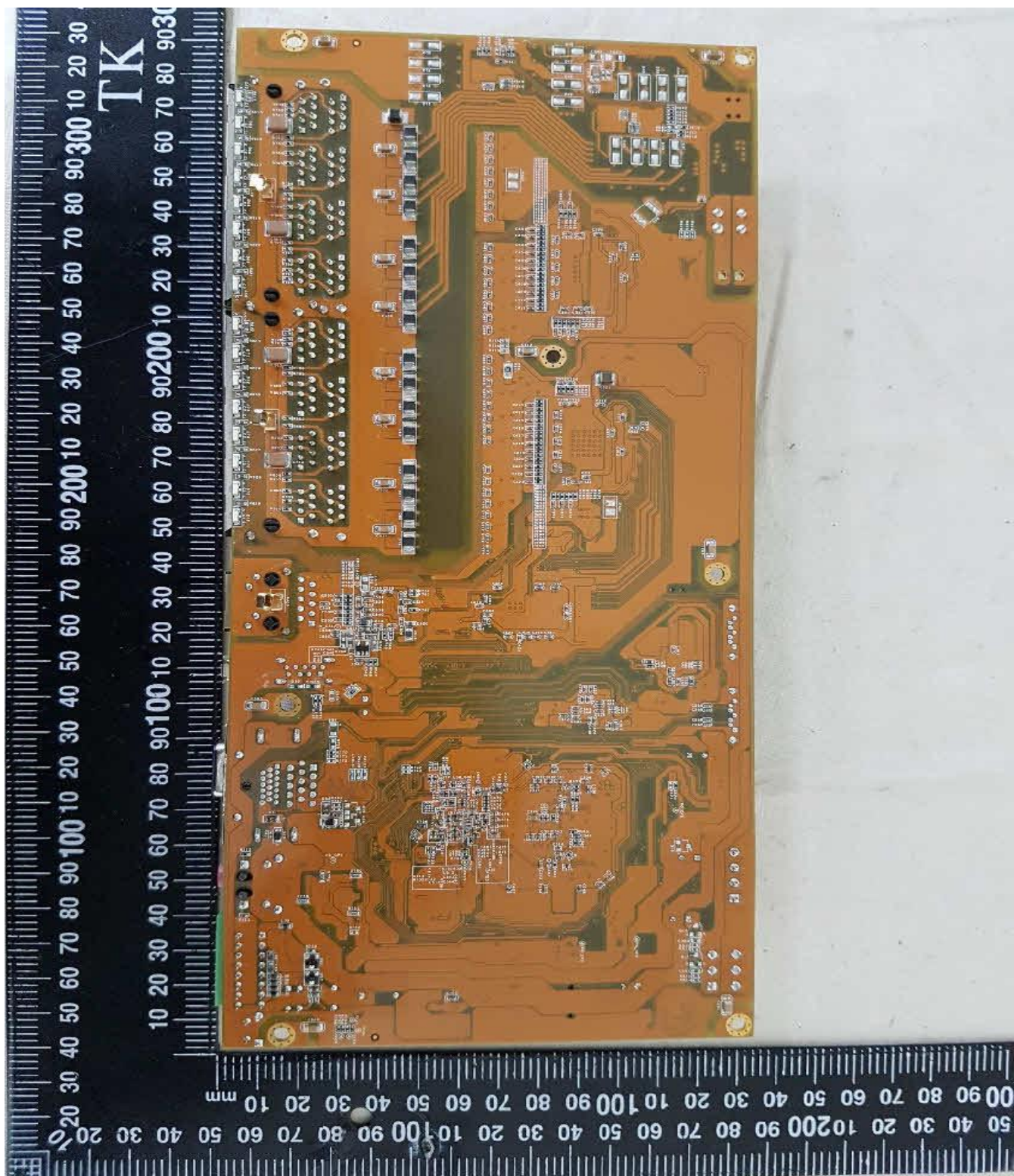


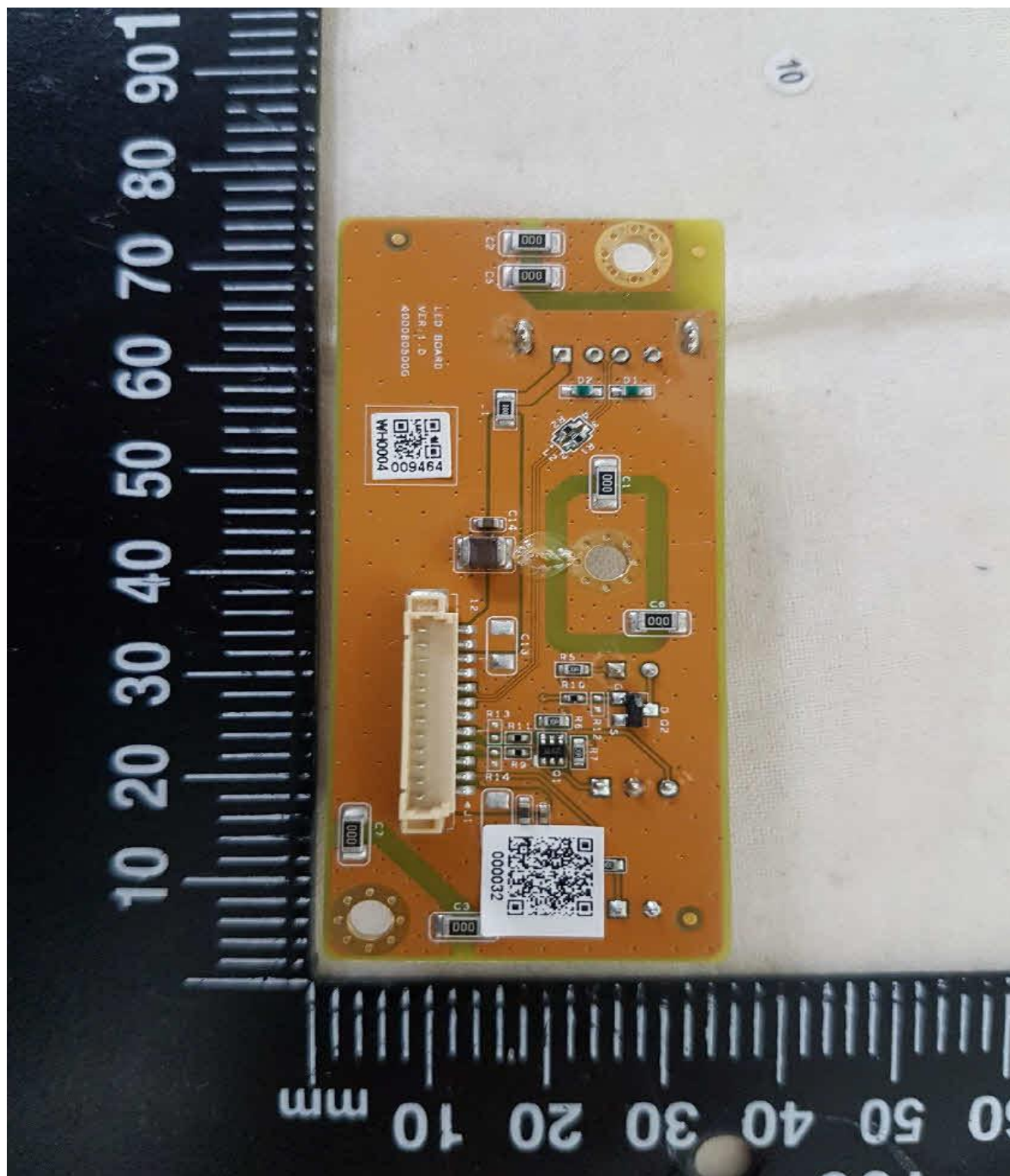


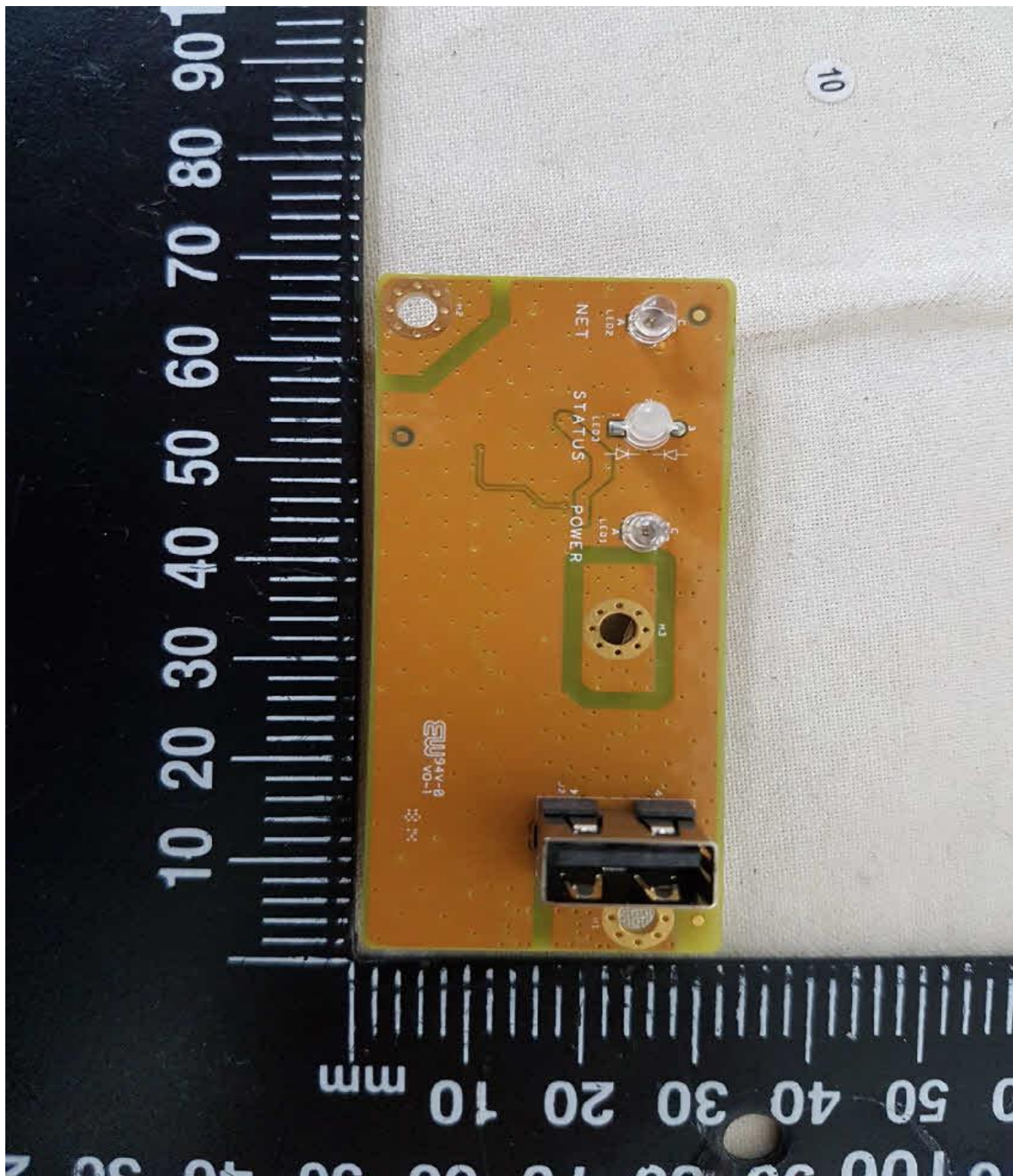


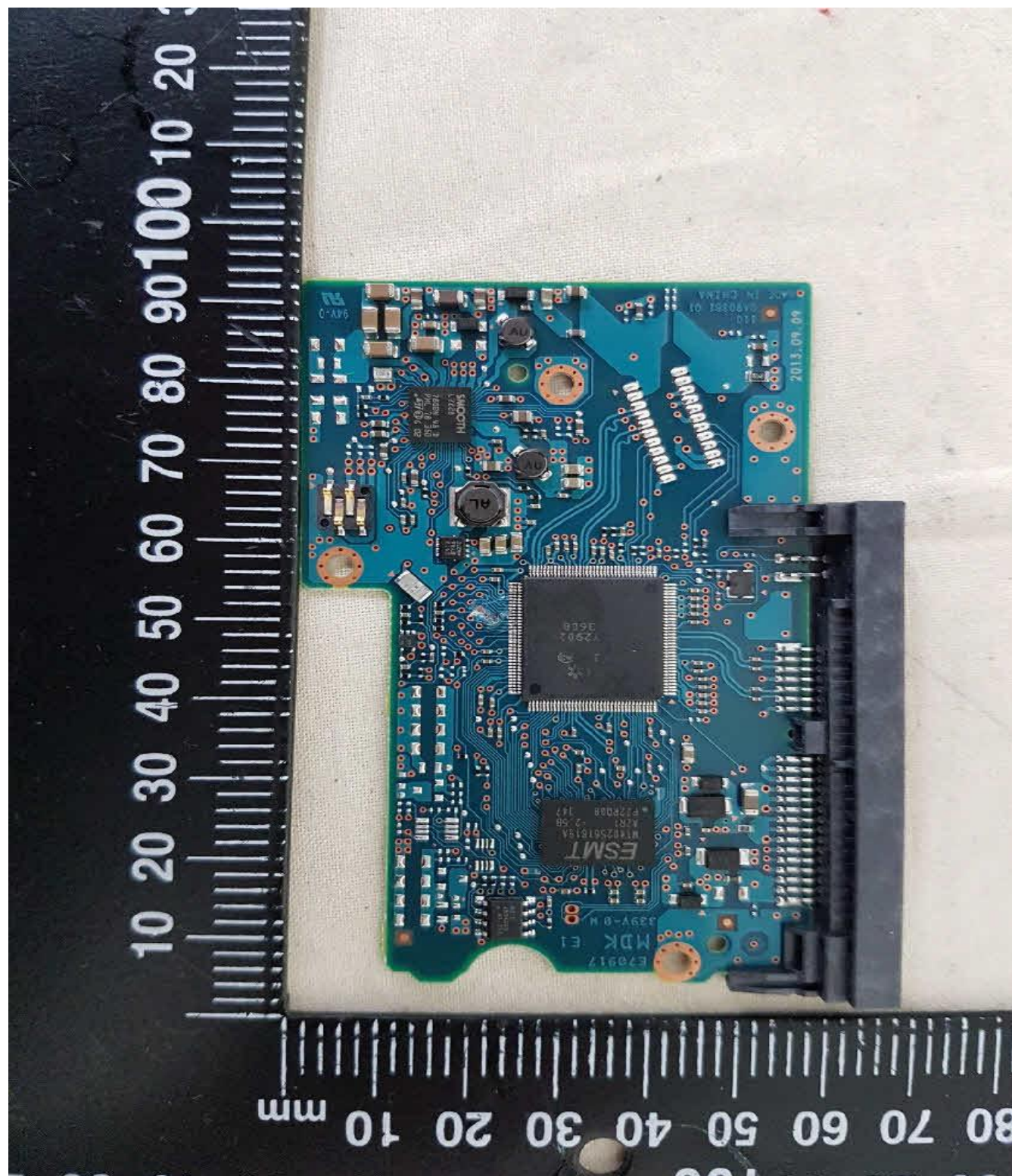




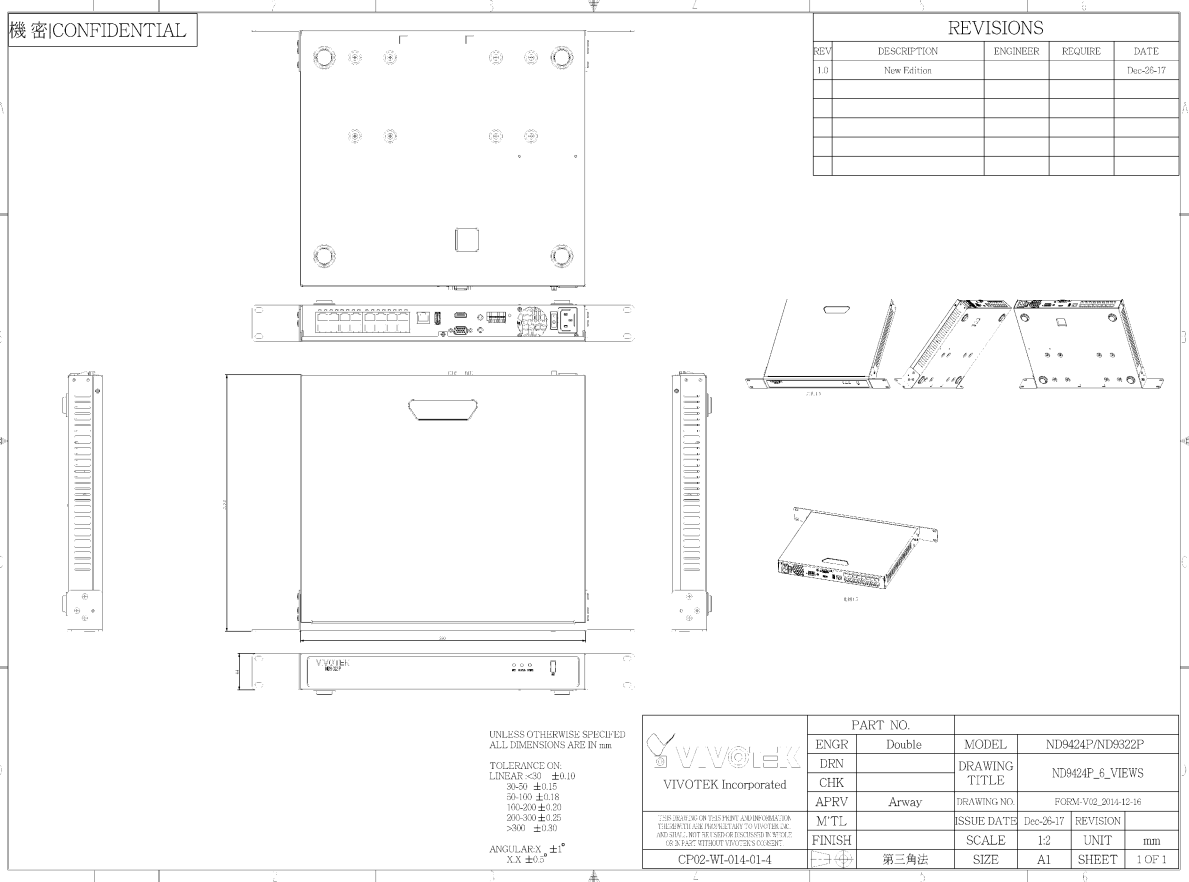


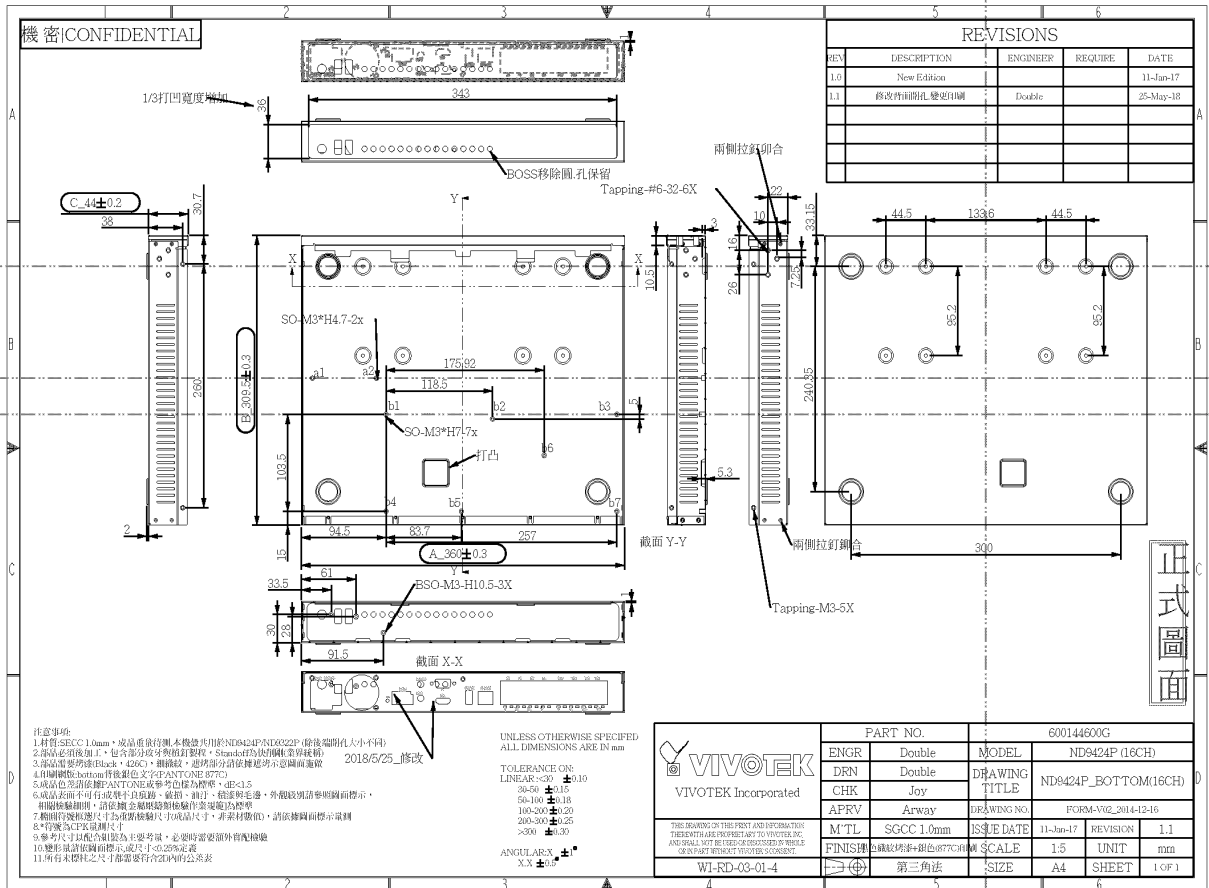


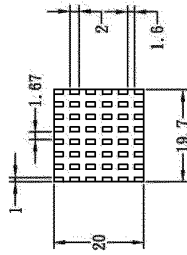
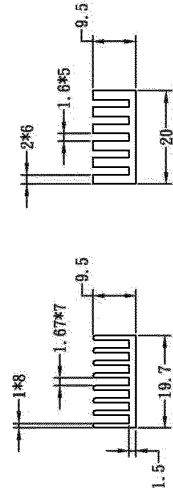












DIM. IN	mm	MATERIAL	PART NO.	SHEET
SCALE	1:1	FINISH		1/1
TOL	1-30	DRN.		REV.
	31-120	±0.25		FORM
	121-300	±0.45 ±0.60		

- Model ND9322P is similar to model ND9424P with same circuit and layout. Also see below table and appended table 1.5.1 for details.

Model	Input Rating	SPS model	PoE ports
ND9322P	100-240Vac, 50-60Hz, 3.5A	DPS-200PB-185 XX	8 ports, totally 120W
ND9424P	100-240Vac, 50-60Hz, 6-3A	DPS-280AB-6 XX	16 ports, totally 200W

Test Record

Test Record No. 1

The manufacturer submitted representative production samples of Network Video Recorder, models 1) ND9322P 2) ND9424P

Unless otherwise indicated, all Enclosures and Tests were based upon previous evaluation under the CB scheme. The CB Scheme Test Certificate Ref. No. DK-78841-UL, dated 2018-12-05, and Test Report No. WD-OFF-180544-A0, dated 2018-12-03, were prepared by UL (Demko).

The Construction Review Datasheets were not considered necessary, since the construction review had completed during the CB certification. Also, sample was reviewed at the client side during the investigation of witness trip.

Test results reported relate only to the items tested.

The following tests were waived:

Test	Rationale for Waiving
Input: Single-Phase (1.6.2)	CB
Limited Power Source Measurements (2.5)	CB
Protective Bonding II (2.6.3.4, 2.6.1)	CB
Humidity (2.9.1, 2.9.2, 5.2.2)	CB
Steady Force (4.2.1 - 4.2.4)	CB
Impact (4.2.5, 4.2.1, Part 22 10.2)	CB
Lithium Battery Reverse Current Measurement (4.3.8)	CB
Heating (4.5.1, 1.4.12, 1.4.13)	CB
Touch Current (Single-Phase; TN/TT System) (5.1, Annex D)	CB
Electric Strength (5.2.2)	CB
Abnormal Operation (5.3.1 - 5.3.9)	CB
Overload of Operator Accessible Connector (5.3.7)	CB

The following supplements are provided as a part of this Test Record. NOTE: These supplements are only available to the Applicant via the CDA system.

Type	Supplement Id	Description
Attachment	2-01	CRD