



# **S** TB9330-E

Thermal Bullet Network Camera



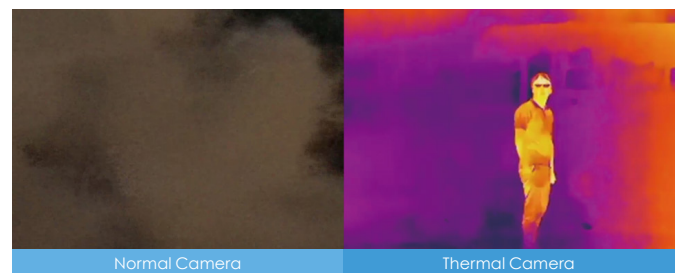
384x256 • NETD < 50 mk • H.265 • Trend Micro IoT Security • -50°C ~ 60°C • IP66/67 • IK10 • NEMA 4X

VIVOTEK's TB9330-E is an H.265 outdoor thermal bullet network camera designed to detect people and vehicles in wild weather, difficult lighting conditions, and any situation that create poor visibility. With heat based thermal imagery and lens options of 8.8/19/35/50mm, the TB9330-E supports long distance monitoring of vehicles up to 4,500m away even in complete darkness or under challenging climate conditions such as fog, rain, smoke and dust.

The TB9330-E offers 384x256 resolution with an uncooled thermal sensor and VIVOTEK's VCA (Video Content Analysis) to enhance perimeter protection and boarder security. This camera is also embedded with Trend Micro IoT Security software to provide users with higher levels of network protection. With an IP66, IP67, IK10 and NEMA 4X-rated rugged design, the TB9330-E will withstand shock & vibration, humidity, dust, and even extreme temperature fluctuations to maintain stable and reliable video no matter how harsh the environment.

## Key Features

- Uncooled VOx Infrared Detector
- 384x256 Resolution
- NETD < 50 mk @ F1.0
- H.265 Compression Technology
- Trend Micro IoT Security
- Two-way Audio
- Supports ONVIF Standard to Simplify Integration and Enhance Interoperability
- UL Certification
- Weather-proof IP66/IP67, Vandal-proof IK10 and NEMA 4X-rated Housing
- VIVOTEK VCA (Video Content Analysis) Support



Infrared thermal image through fog and smoke.

## Technical Specifications

Model	TB9330-E(8.8mm) TB9330-E(19mm) TB9330-E(35mm) TB9330-E(50mm)
<b>System Information</b>	
CPU	Multimedia SoC (System-on-Chip)
Flash	128 MB
RAM	512 MB
<b>Camera Features</b>	
Image Sensor	Uncooled VOx infrared detector
Maximum Resolution	Effective pixels: 384x256 Image scale up to: 960x640
Pixel Size	17 μm
Spectral Range	8 ~ 14 μm
Sensitivity	NETD < 50 mk
Lens Type	Fixed-focal (Thermal lens)
Focal Length	TB9330-E(8.8mm): f = 8.8 mm TB9330-E(19mm): f = 19 mm TB9330-E(35mm): f = 35 mm TB9330-E(50mm): f = 50 mm
Aperture	F1.0
Auto-iris	Fixed iris
Field of View	TB9330-E(8.8mm): 38.3° (Horizontal) 26.1° (Vertical) 45.4° (Diagonal) TB9330-E(19mm): 18.3° (Horizontal) 12.3° (Vertical) 21.9° (Diagonal) TB9330-E(35mm): 10° (Horizontal) 6.7° (Vertical) 12° (Diagonal) TB9330-E(50mm): 7° (Horizontal) 4.7° (Vertical) 8.4° (Diagonal)
Pan/Tilt/Zoom Functionalities	ePTZ: 20x digital zoom (4x on IE plug-in, 5x built-in)
Storage	Seamless Recording to MicroSD/SDHC/SDXC card and recording to network-attached storage (NAS)
<b>Video</b>	
Compression	H.265, H.264, MJPEG
Maximum Frame Rate	30 fps @ 384x256
Maximum Streams	4 simultaneous streams
Video Streaming	Adjustable resolution, quality and constant bit rate control, Smart Stream II
Image Settings	General settings: video title and time stamp overlay, video orientation (flip, mirror, rotation); Thermal settings: white balance, image adjustment (brightness, contrast, sharpness); Privacy mask; Scheduled profile settings
<b>Audio</b>	
Audio Capability	Two-way audio (full duplex)
Compression	G.726, G.711
Interface	External microphone input External line output
<b>Network</b>	
Users	Live viewing for up to 10 clients
Security	Access list, digest authentication, HTTPS, IEEE 802.1x, Password protection, user access log, user account management
Protocols	802.1X, ARP, Bonjour, CIFS/SMB, DDNS, DHCP, DNS, FTP, HTTP, HTTPS, ICMP, IGMP, IPv4, IPv6, NTP, PPPoE, QoS (CoS/DSCP), RTSP/RTP/RTCP, SMTP, SNMP, SSL, TCP/IP, TLS, UDP, UPnP
Interface	10 Base-T/100 Base-TX ethernet (RJ-45) *It is highly recommended to use standard CAT5e & CAT6 cables which are compliant with the 3P/ETL standard.
ONVIF	Profile G, S supported, specification available at <a href="http://www.onvif.org">www.onvif.org</a>
<b>Intelligent Video</b>	
Video Motion Detection	Five-window video motion detection, human detection, time filter
VCA	Line crossing detection, field detection, loitering detection
VADP Package	Trend Micro IoT Security (3-year free trial)
<b>Alarm and Event</b>	
Event Trigger	Audio detection, camera tampering detection, cybersecurity events (brute force attack event, cyberattack event, quarantine event), digital input, manual trigger, motion detection, periodical trigger, recording notification, SD card life expectancy, shock detection, system boot
Event Action	Event notification via audio clip, digital output, email, HTTP, FTP, NAS server, SD card File upload via email, HTTP, FTP, NAS server, SD card
<b>General</b>	
Connectors	RJ-45 cable connector for 10/100Mbps Network/PoE connection Audio input Audio output DC 12V power input AC 24V power input Digital input Digital output BNC RS485
LED Indicator	System power and status indicator
Power Input	AC 24V, DC 12V, IEEE 802.3at PoE Class 4 (Simultaneous Power Redundancy Supported)
Power Consumption	PoE: Max. 12.5 W DC 12V: Max. 10 W AC 24V: Max. 11 W

## Technical Specifications

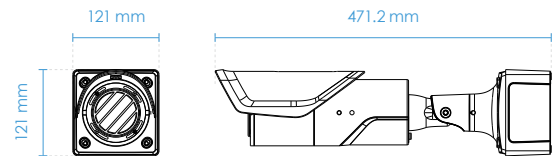
Dimensions	TB9330-E(8.8mm): 121 x 121 x 471.2 mm (with junction box) TB9330-E(19mm): 121 x 121 x 452.2 mm (with junction box) TB9330-E(35mm)/(50mm): 121 x 121 x 455.6 mm (with junction box)
Weight	TB9330-E(8.8mm)/(35mm)/(50mm): 2,080 g TB9330-E(19mm): 2,000 g
Certifications	EMC: CE (EN 55032 Class A, EN 55024, EN 50121-3-2, EN 50121-4), FCC (FCC Part 15 Subpart B Class A), RCM (AS/NZS CISPR 32 Class A), VCCI (VCCI-CISPR 32 Class A); Safety: UL (UL 60950-1), CB (IEC/EN 60950-1, IEC/EN 60950-22); Environment: IK10 (IEC 62262), IP66/67 (IEC 60529), NEMA (NEMA 250 Type 4X); IA: BIS (IS 13252)
Operating Temperature	Start Temperature: -40°C ~ 60°C (-40°F ~ 140°F) Working temperature: -50°C ~ 60°C (-58°F ~ 140°F)
Humidity	90%
<b>System Requirements</b>	
Operating System	Microsoft Windows 10/8/7 Mac 10.12 (Chrome only)
Web Browser	Internet Explorer 10/11 Chrome version 58 or above
Other Players	VLC: 1.1.11 or above

## Included Accessories

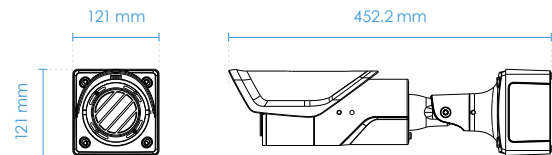
Packing Contents	Quick installation guide, alignment sticker, screw pack, waterproof accessory bag, junction box, sunshield
------------------	--

## Dimensions

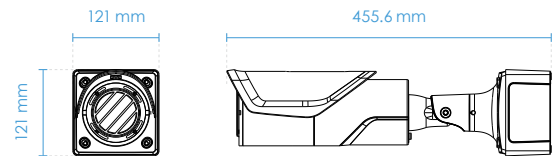
### • TB9330-E(8.8mm)



### • TB9330-E(19mm)



### • TB9330-E(35mm)/(50mm)



## Compatible Accessories

### Mounting Kits



AM-312  
Pole Mount Adapter



AM-412  
Corner Mount Adapter



AM-719  
Junction Box (Standard Package)

## Coverage Table

Detection Ranges					
Resolution		384x256			
Focal Length		8.8 mm	19 mm	35 mm	50 mm
FOV	Horizontal	38.3°	18.3°	10°	7°
	Vertical	26.1°	12.3°	6.7°	4.7°
Human 1.8 x 0.5 m (5 x 1 ft)	Detection (1.5 pixels)	262 m (859 ft)	566 m (1,856 ft)	1,043 m (3,422 ft)	1,490 m (4,888 ft)
	Recognition (6 pixels)	66 m (216 ft)	142 m (465 ft)	261 m (856 ft)	373 m (1,223 ft)
	Identification (12 pixels)	33 m (108 ft)	71 m (232 ft)	130 m (426 ft)	186 m (610 ft)
Vehicle 4 x 1.5 m (13 x 4 ft)	Detection (1.5 pixels)	801 m (2,627 ft)	1,729 m (5,672 ft)	3,184 m (10,446 ft)	4,549 m (14,924 ft)
	Recognition (6 pixels)	200 m (656 ft)	432 m (1,416 ft)	796 m (2,611 ft)	1,137 m (3,730 ft)
	Identification (12 pixels)	100 m (328 ft)	216 m (708 ft)	398 m (1,305 ft)	569 m (1,866 ft)

Note: The detection ranges are calculated using Johnson's criteria and may vary under different environmental variables.

Standard VCA Ranges					
Resolution		384x256			
Focal Length		8.8 mm	19 mm	35 mm	50 mm
Human 1.8 x 0.5 m (5 x 1 ft)		33 m (108 ft)	71 m (232 ft)	130 m (426 ft)	186 m (610 ft)
Vehicle 4 x 1.5 m (13 x 4 ft)		100 m (328ft)	216 m (708 ft)	398 m (1,305 ft)	569 m (1,866 ft)

Note: The detection ranges are the theoretical values and may vary under different environmental variables.