




**TEST REPORT
EN 62368-1**

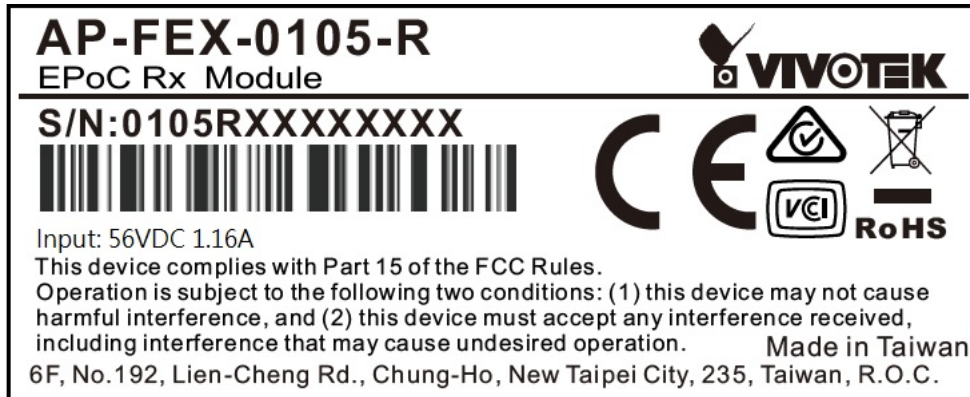
**Audio/video, information and communication technology equipment
Part 1: Safety requirements**

Report Number	AST-LR-21012215
Date of issue.....	January 29, 2021
Total number of pages.....	74
Tested by (name, signature).....	Ben Hung 
Approved by (name, signature).....	Ricky Liu 
Name of Testing Laboratory preparing the Report	Ansett Lab Co., Ltd. 4F., No.152, Baoqiao Rd., Xindian Dist., New Taipei City 231, Taiwan
Applicant's name	VIVOTEK INC.
Address	6F, No.192, Lien-Cheng Rd., Chung-Ho, New Taipei City, 235, Taiwan, R.O.C
Test specification:	
Standard.....	EN 62368-1:2014+A11:2017 AS/NZS 62368.1:2018.
Test procedure	E&E
Non-standard test method	N/A
Test Report Form No.	AST-R-103
Test Report Form(s) Originator.....	AST
Master TRF.....	2017/09/01
Test Item description	EPoC Extender
Trade Mark	
Manufacturer	VIVOTEK INC. 6F, No.192, Lien-Cheng Rd., Chung-Ho, New Taipei City, 235, Taiwan, R.O.C
Model/Type reference	AP-FEX-0105-R
Ratings	Input: 56 Vdc, 1.16 A

<p>List of Attachments (including a total number of pages in each attachment): ATTACHMENT 1: National differences ATTACHMENT 2: Photographs Unless otherwise specified, each attachment has been included in the total number of pages.</p>	
<p>Summary of testing:</p>	
<p>Tests performed (name of test and test clause): 4.4.4.2, T.5 Steady Force Test 4.4.4.4, T.6 Impact Test 5.4.1.4, 6.3.2, 9.0, B.2.6 - Temperature measurements Annex B.2.5 - Input test Annex B.3 - Abnormal operating condition tests Annex B.4 - Simulated single fault conditions Annex F.3.10 - Test for permanence of markings Annex Q.1 - Circuits intended for interconnection with building wiring (L.P.S.)</p> <p>All applicable tests were performed. Details see attached clauses and tables.</p>	<p>Testing location: Ansett Lab Co., Ltd. 4F., No.152, Baoqiao Rd., Xindian Dist., New Taipei City 23145, Taiwan</p>
<p>Summary of compliance with National Differences: List of countries addressed EU Group differences, special national deviations of all CENELEC countries and Australia / New Zealand. <input checked="" type="checkbox"/> The product fulfils the requirements of EN 62368-1:2014/A11:2017 and AS/NZS 62368.1:2018.</p>	

Copy of marking plate:

The artwork below may be only a draft. The use of certification marks on a product must be authorized by the respective NCBS that own these marks.



Note:

The above markings are the minimum requirements required by the safety standard. For the final production samples, the additional markings which do not give rise to misunderstanding may be added.

Because information of importer has not been confirmed, the information of importer will be given on label by manufacturer prior to marketing in the EEC.

TEST ITEM PARTICULARS:	
Classification of use by	<input checked="" type="checkbox"/> Ordinary person <input type="checkbox"/> Instructed person <input type="checkbox"/> Skilled person <input checked="" type="checkbox"/> Children likely to be present
Supply Connection.....	<input type="checkbox"/> AC Mains <input type="checkbox"/> DC Mains <input checked="" type="checkbox"/> External Circuit - not Mains connected - <input checked="" type="checkbox"/> ES1 <input type="checkbox"/> ES2 <input type="checkbox"/> ES3
Supply % Tolerance	<input type="checkbox"/> +10%/-10% <input type="checkbox"/> +20%/-15% <input type="checkbox"/> +___% / -___% <input checked="" type="checkbox"/> None
Supply Connection – Type	<input type="checkbox"/> pluggable equipment type A - <input type="checkbox"/> non-detachable supply cord <input type="checkbox"/> appliance coupler <input type="checkbox"/> direct plug-in <input type="checkbox"/> mating connector <input type="checkbox"/> pluggable equipment type B - <input type="checkbox"/> non-detachable supply cord <input type="checkbox"/> appliance coupler <input type="checkbox"/> permanent connection <input checked="" type="checkbox"/> mating connector <input type="checkbox"/> other:_____
Considered current rating of protective device as part of building or equipment installation.....	___ A Installation location: <input type="checkbox"/> building; <input type="checkbox"/> equipment
Equipment mobility.....	<input checked="" type="checkbox"/> movable <input type="checkbox"/> hand-held <input type="checkbox"/> transportable <input type="checkbox"/> stationary <input type="checkbox"/> for building-in <input type="checkbox"/> direct plug-in <input type="checkbox"/> rack-mounting <input type="checkbox"/> wall-mounted
Over voltage category (OVC)	<input type="checkbox"/> OVC I <input type="checkbox"/> OVC II <input type="checkbox"/> OVC III <input type="checkbox"/> OVC IV <input checked="" type="checkbox"/> other: not connect to mains
Class of equipment	<input type="checkbox"/> Class I <input type="checkbox"/> Class II <input checked="" type="checkbox"/> Class III
Access location	<input type="checkbox"/> restricted access location <input checked="" type="checkbox"/> N/A
Pollution degree (PD)	<input type="checkbox"/> PD 1 <input checked="" type="checkbox"/> PD 2 <input type="checkbox"/> PD 3
Manufacturer's specified maximum operating ambient:	40 °C
IP protection class	<input checked="" type="checkbox"/> IPX0 <input type="checkbox"/> IP___
Power Systems	<input type="checkbox"/> TN <input type="checkbox"/> TT <input type="checkbox"/> IT - ___ V _{L-L}
Altitude during operation (m)	<input checked="" type="checkbox"/> 2000 m or less <input type="checkbox"/> ___ m
Altitude of test laboratory (m)	<input checked="" type="checkbox"/> 2000 m or less <input type="checkbox"/> ___ m
Mass of equipment (kg)	<input checked="" type="checkbox"/> 0.135 kg
POSSIBLE TEST CASE VERDICTS:	
- test case does not apply to the test object.....	N/A
- test object does meet the requirement.....	P (Pass)
- test object does not meet the requirement.....	F (Fail)

TESTING:	
Date of receipt of test item..... :	2020-10-08
Date (s) of performance of tests..... :	2020-10-08 to 2020-11-29
GENERAL REMARKS:	
<p>"(See Enclosure #)" refers to additional information appended to the report. "(See appended table)" refers to a table appended to the report.</p> <p>Throughout this report a <input type="checkbox"/> comma / <input checked="" type="checkbox"/> point is used as the decimal separator.</p> <p>The instructions specified by the standard have to be in official language of each country, however, only English is checked for this report. It is the applicant responsibility to provide instruction in each official language of the EU.</p> <p>This report is submitted for the exclusive use of the client to whom it is addressed. Its significance is subject to the adequacy and representative character of the sample(s) and to the comprehensiveness of the tests, examinations or surveys made.</p> <p>This report justified only the submitted samples exclusively and not necessarily implies that all other samples are also to be found in same result.</p> <p>The CE marking may only be used if all relevant and effective EC directives are complied with.</p> <p>The measurement uncertainty is not accounted for the decision rule in statement of conformity.</p>	
When differences exist; they shall be identified in the General product information section.	
Name and address of factory (ies)..... :	AETEK INC 3F, No.192, Lien-Cheng Rd., Chung-Ho, New Taipei City, 235, Taiwan, R.O.C.
GENERAL PRODUCT INFORMATION:	
Product Description	
The product covered is a EPoC Kit intended to be used with Information Technology Equipment (ITE). And that is intended powered by an external power supply, which complies with ES1, PS2 and Limited Power Source.	
Model Differences	
--	
Additional application considerations – (Considerations used to test a component or sub-assembly) –	
Where the components or subassemblies are used in circuits is compliance with the relevant IEC component standards and/or tested under the conditions occurring in the equipment, and that checked for correct application and use in accordance with its rating.	

ENERGY SOURCE IDENTIFICATION AND CLASSIFICATION TABLE:	
<p>(Note 1: Identify the following six (6) energy source forms based on the origin of the energy.) (Note 2: The identified classification e.g., ES2, TS1, should be with respect to its ability to cause pain or injury on the body or its ability to ignite a combustible material. Any energy source can be declared Class 3 as a worse case classification e.g. PS3, ES3.)</p>	
<p>Electrically-caused injury (Clause 5): (Note: Identify type of source, list sub-assembly or circuit designation and corresponding energy source classification) Example: +5 V dc input ES1</p>	
Source of electrical energy	Corresponding classification (ES)
All Circuits	ES1
I/O terminals	ES1
<p>Electrically-caused fire (Clause 6): (Note: List sub-assembly or circuit designation and corresponding energy source classification) Example: Battery pack (maximum 85 watts): PS2</p>	
Source of power or PIS	Corresponding classification (PS)
All Circuits	PS2
I/O terminals	PS2 (complied with Annex Q.1 L.P.S.)
<p>Injury caused by hazardous substances (Clause 7) (Note: Specify hazardous chemicals, whether produces ozone or other chemical construction not addressed as part of the component evaluation.) Example: Liquid in filled component Glycol</p>	
Source of hazardous substances	Corresponding chemical
N/A	N/A
<p>Mechanically-caused injury (Clause 8) (Note: List moving part(s), fan, special installations, etc. & corresponding MS classification based on Table 35.) Example: Wall mount unit MS2</p>	
Source of kinetic/mechanical energy	Corresponding classification (MS)
Edges and corners	MS1
Equipment mass	MS1
<p>Thermal burn injury (Clause 9) (Note: Identify the surface or support, and corresponding energy source classification based on type of part, location, operating temperature and contact time in Table 38.) Example: Hand-held scanner – thermoplastic enclosure TS1</p>	
Source of thermal energy	Corresponding classification (TS)
Enclosure Accessible Part	TS1
<p>Radiation (Clause 10) (Note: List the types of radiation present in the product and the corresponding energy source classification.) Example: DVD – Class 1 Laser Product RS1</p>	
Type of radiation	Corresponding classification (RS)
LED indicator	RS1

ENERGY SOURCE DIAGRAM				
Indicate which energy sources are included in the energy source diagram. Insert diagram below				
<p>For the energy sources, see above mentioned energy source identification and classification table.</p>				

OVERVIEW OF EMPLOYED SAFEGUARDS				
Clause	Possible Hazard			
5.1	Electrically-caused injury			
Body Part (e.g. Ordinary)	Energy Source (ES3: Primary Filter circuit)	Safeguards		
		Basic	Supplementary	Reinforced (Enclosure)
Ordinary person	ES1: All Circuits	N/A	N/A	N/A
Ordinary person	ES1: I/O terminals	N/A	N/A	N/A
6.1	Electrically-caused fire			
Material part (e.g. mouse enclosure)	Energy Source (PS2: 100 Watt circuit)	Safeguards		
		Basic	Supplementary	Reinforced
Enclosure	PS2 circuits	See clause 6.3	N/A	N/A
All components within the equipment enclosure	PS2 circuits	See clause 6.3	N/A	N/A
PCB	PS2 circuits	See clause 6.3	Made of V-1 class material	N/A
7.1	Injury caused by hazardous substances			
Body Part (e.g., skilled)	Energy Source (hazardous material)	Safeguards		
		Basic	Supplementary	Reinforced
N/A	N/A	N/A	N/A	N/A
8.1	Mechanically-caused injury			
Body Part (e.g. Ordinary)	Energy Source (MS3: High Pressure Lamp)	Safeguards		
		Basic	Supplementary	Reinforced (Enclosure)
Ordinary person	MS1: Edges and corners	Rounded edges and corners	N/A	N/A
Ordinary person	MS1: Equipment mass	N/A	N/A	N/A
9.1	Thermal Burn			
Body Part (e.g., Ordinary)	Energy Source (TS2)	Safeguards		
		Basic	Supplementary	Reinforced
Ordinary person	TS1: Accessible surfaces and parts	N/A	N/A	N/A
10.1	Radiation			
Body Part (e.g., Ordinary)	Energy Source (Output from audio)	Safeguards		
		Basic	Supplementary	Reinforced

	port)			
N/A	N/A	N/A	N/A	N/A
<p>Supplementary Information:</p> <p>(1) See attached energy source diagram for additional details.</p> <p>(2) "N" – Normal Condition; "A" – Abnormal Condition; "S" Single Fault</p>				

EN 62368-1			
Clause	Requirement + Test	Result - Remark	Verdict
4	GENERAL REQUIREMENTS		P
4.1.1	Acceptance of materials, components and subassemblies	Components which were found to affect safety aspects comply with the requirements of this standard or within the safety aspects of the relevant IEC component standards. (See appended table 4.1.2).	P
4.1.2	Use of components	Components which are certified to IEC and/or national standards are used correctly within their ratings. Components not covered by IEC standards are tested under the conditions present in the equipment.	P
4.1.3	Equipment design and construction	Compliance is checked by inspection and by the relevant tests of Annex B.2, Annex B.3 and Annex B.4.	P
4.1.15	Markings and instructions..... :	(See Annex F)	P
4.4.4	Safeguard robustness	See clause 4.4.4.2 to 4.4.4.9.	P
4.4.4.2	Steady force tests..... :	(See Annex T.5)	P
4.4.4.3	Drop tests..... :		N/A
4.4.4.4	Impact tests..... :	(See Annex T.6)	P
4.4.4.5	Internal accessible safeguard enclosure and barrier tests..... :		N/A
4.4.4.6	Glass Impact tests..... :		N/A
4.4.4.7	Thermoplastic material tests..... :		N/A
4.4.4.8	Air comprising a safeguard..... :		N/A
4.4.4.9	Accessibility and safeguard effectiveness	All safeguards remain effective during and after the test.	P
4.5	Explosion	No explosion occurs during normal operating conditions, abnormal operating conditions and single fault conditions.	P
4.6	Fixing of conductors		N/A
4.6.1	Fix conductors not to defeat a safeguard		N/A
4.6.2	10 N force test applied to..... :		N/A
4.7	Equipment for direct insertion into mains socket - outlets	EUT is not Direct plug-in type equipment.	N/A
4.7.2	Mains plug part complies with the relevant standard..... :		N/A
4.7.3	Torque (Nm)..... :		N/A
4.8	Products containing coin/button cell batteries		N/A

EN 62368-1			
Clause	Requirement + Test	Result - Remark	Verdict
4.8.2	Instructional safeguard		N/A
4.8.3	Battery Compartment Construction		N/A
	Means to reduce the possibility of children removing the battery..... :		—
4.8.4	Battery Compartment Mechanical Tests..... :		N/A
4.8.5	Battery Accessibility		N/A
4.9	Likelihood of fire or shock due to entry of conductive object..... :	(See Annex P)	P

5	ELECTRICALLY-CAUSED INJURY		P
5.2.1	Electrical energy source classifications..... :	EUT is supplied by ES1 and no boost circuits inside EUT. All circuits are classified as ES1	P
5.2.2	ES1, ES2 and ES3 limits	See Energy source identification and classification table.	P
5.2.2.2	Steady-state voltage and current..... :		N/A
5.2.2.3	Capacitance limits..... :		N/A
5.2.2.4	Single pulse limits..... :		N/A
5.2.2.5	Limits for repetitive pulses..... :		N/A
5.2.2.6	Ringling signals..... :		N/A
5.2.2.7	Audio signals..... :		N/A
5.3	Protection against electrical energy sources		N/A
5.3.1	General Requirements for accessible parts to ordinary, instructed and skilled persons		N/A
5.3.2.1	Accessibility to electrical energy sources and safeguards		N/A
5.3.2.2	Contact requirements	No ES3 circuit	N/A
	a) Test with test probe from Annex V..... :		N/A
	b) Electric strength test potential (V)..... :		N/A
	c) Air gap (mm)..... :		N/A
5.3.2.4	Terminals for connecting stripped wire	No such audio signal terminal provided.	N/A
5.4	Insulation materials and requirements		N/A
5.4.1.2	Properties of insulating material		N/A
5.4.1.3	Humidity conditioning..... :		N/A
5.4.1.4	Maximum operating temperature for insulating materials..... :		N/A
5.4.1.5	Pollution degree..... :	Pollution degree 2.	—
5.4.1.5.2	Test for pollution degree 1 environment and for an insulating compound		N/A

EN 62368-1			
Clause	Requirement + Test	Result - Remark	Verdict
5.4.1.5.3	Thermal cycling		N/A
5.4.1.6	Insulation in transformers with varying dimensions	No such construction.	N/A
5.4.1.7	Insulation in circuits generating starting pulses	No such circuits generating starting pulses.	N/A
5.4.1.8	Determination of working voltage		N/A
5.4.1.9	Insulating surfaces		N/A
5.4.1.10	Thermoplastic parts on which conductive metallic parts are directly mounted		N/A
5.4.1.10.2	Vicat softening temperature		N/A
5.4.1.10.3	Ball pressure		N/A
5.4.2	Clearances	Only functional insulation required	N/A
5.4.2.2	Determining clearance using peak working voltage		N/A
5.4.2.3	Determining clearance using required withstand voltage		N/A
	a) a.c. mains transient voltage		—
	b) d.c. mains transient voltage		—
	c) external circuit transient voltage		—
	d) transient voltage determined by measurement		—
5.4.2.4	Determining the adequacy of a clearance using an electric strength test		N/A
5.4.2.5	Multiplication factors for clearances and test voltages		N/A
5.4.3	Creepage distances.....	Only functional insulation required	N/A
5.4.3.1	General		N/A
5.4.3.3	Material Group		—
5.4.4	Solid insulation		N/A
5.4.4.2	Minimum distance through insulation		N/A
5.4.4.3	Insulation compound forming solid insulation		N/A
5.4.4.4	Solid insulation in semiconductor devices		N/A
5.4.4.5	Cemented joints		N/A
5.4.4.6	Thin sheet material		N/A
5.4.4.6.1	General requirements		N/A
5.4.4.6.2	Separable thin sheet material		N/A
	Number of layers (pcs)		N/A
5.4.4.6.3	Non-separable thin sheet material		N/A
5.4.4.6.4	Standard test procedure for non-separable thin sheet material.....		N/A
5.4.4.6.5	Mandrel test		N/A

EN 62368-1			
Clause	Requirement + Test	Result - Remark	Verdict
5.4.4.7	Solid insulation in wound components		N/A
5.4.4.9	Solid insulation at frequencies >30 kHz..... :		N/A
5.4.5	Antenna terminal insulation	No antenna terminal.	N/A
5.4.5.1	General		N/A
5.4.5.2	Voltage surge test		N/A
	Insulation resistance (MΩ)..... :		—
5.4.6	Insulation of internal wire as part of supplementary safeguard..... :		N/A
5.4.7	Tests for semiconductor components and for cemented joints		N/A
5.4.8	Humidity conditioning		N/A
	Relative humidity (%)..... :		—
	Temperature (°C) :		—
	Duration (h) :		—
5.4.9	Electric strength test..... :		N/A
5.4.9.1	Test procedure for a solid insulation type test		N/A
5.4.9.2	Test procedure for routine tests		N/A
5.4.10	Protection against transient voltages between external circuit		N/A
5.4.10.1	Parts and circuits separated from external circuits		N/A
5.4.10.2	Test methods		N/A
5.4.10.2.1	General		N/A
5.4.10.2.2	Impulse test..... :		N/A
5.4.10.2.3	Steady-state test..... :		N/A
5.4.11	Insulation between external circuits and earthed circuitry :		N/A
5.4.11.1	Exceptions to separation between external circuits and earth		N/A
5.4.11.2	Requirements		N/A
	Rated operating voltage U_{op} (V)..... :		—
	Nominal voltage U_{peak} (V)..... :		—
	Max increase due to variation U_{sp} :		—
	Max increase due to ageing ΔU_{sa} :		—
	$U_{op} = U_{peak} + \Delta U_{sp} + \Delta U_{sa}$:		—
5.5	Components as safeguards		N/A
5.5.1	General	No component used as safeguard	N/A
5.5.2	Capacitors and RC units		N/A
5.5.2.1	General requirement		N/A

EN 62368-1			
Clause	Requirement + Test	Result - Remark	Verdict
5.5.2.2	Safeguards against capacitor discharge after disconnection of a connector..... :		N/A
5.5.3	Transformers		N/A
5.5.4	Optocouplers		N/A
5.5.5	Relays		N/A
5.5.6	Resistors		N/A
5.5.7	SPD's		N/A
5.5.7.1	Use of an SPD connected to reliable earthing		N/A
5.5.7.2	Use of an SPD between mains and protective earth		N/A
5.5.8	Insulation between the mains and external circuit consisting of a coaxial cable..... :	No mains circuit	N/A
5.6	Protective conductor		N/A
5.6.2	Requirement for protective conductors	No Protective conductor	N/A
5.6.2.1	General requirements		N/A
5.6.2.2	Colour of insulation		N/A
5.6.3	Requirement for protective earthing conductors		N/A
	Protective earthing conductor size (mm ²) :		—
5.6.4	Requirement for protective bonding conductors		N/A
5.6.4.1	Protective bonding conductors		N/A
	Protective bonding conductor size (mm ²). :		—
	Protective current rating (A) :		—
5.6.4.3	Current limiting and overcurrent protective devices		N/A
5.6.5	Terminals for protective conductors		N/A
5.6.5.1	Requirement		N/A
	Conductor size (mm ²), nominal thread diameter (mm). :		N/A
5.6.5.2	Corrosion		N/A
5.6.6	Resistance of the protective system		N/A
5.6.6.1	Requirements		N/A
5.6.6.2	Test Method Resistance (Ω)..... :		N/A
5.6.7	Reliable earthing		N/A
5.7	Prospective touch voltage, touch current and protective conductor current		N/A
5.7.2	Measuring devices and networks		N/A
5.7.2.1	Measurement of touch current..... :		N/A
5.7.2.2	Measurement of prospective touch voltage		N/A

EN 62368-1			
Clause	Requirement + Test	Result - Remark	Verdict
5.7.3	Equipment set-up, supply connections and earth connections		N/A
	System of interconnected equipment (separate connections/single connection)		—
	Multiple connections to mains (one connection at a time/simultaneous connections)		—
5.7.4	Earthed conductive accessible parts		N/A
5.7.5	Protective conductor current		N/A
	Supply Voltage (V).....		—
	Measured current (mA).....		—
	Instructional Safeguard.....		N/A
5.7.6	Prospective touch voltage and touch current due to external circuits		N/A
5.7.6.1	Touch current from coaxial cables		N/A
5.7.6.2	Prospective touch voltage and touch current from external circuits		N/A
5.7.7	Summation of touch currents from external circuits		N/A
	a) Equipment with earthed external circuits Measured current (mA).....		N/A
	b) Equipment whose external circuits are not referenced to earth. Measured current (mA)		N/A

6	ELECTRICALLY- CAUSED FIRE		P
6.2	Classification of power sources (PS) and potential ignition sources (PIS)		P
6.2.2	Power source circuit classifications	See ENERGY SOURCE IDENTIFICATION AND CLASSIFICATION TABLE for details. EUT is supplied by ES1, all circuits are classified as PS2	P
6.2.2.1	General	See below	P
6.2.2.2	Power measurement for worst-case load fault ... :		N/A
6.2.2.3	Power measurement for worst-case power source fault		N/A
6.2.2.4	PS1	No PS1 circuits within the equipment.	N/A
6.2.2.5	PS2	Supplied by PS2 power adapter and I/O port complied with Annex Q.1	P
6.2.2.6	PS3	No PS3 circuits within the equipment.	N/A
6.2.3	Classification of potential ignition sources		P

EN 62368-1			
Clause	Requirement + Test	Result - Remark	Verdict
6.2.3.1	Arcing PIS		N/A
6.2.3.2	Resistive PIS	All components in the equipment are considered as Resistive PIS.	P
6.3	Safeguards against fire under normal operating and abnormal operating conditions		P
6.3.1 (a)	No ignition and attainable temperature value less than 90 % defined by ISO 871 or less than 300 °C for unknown materials	No ignition and no such temperature attained within the equipment. (See appended table 5.4.1.5, 6.3.2, 9.0, B.2.6)	P
6.3.1 (b)	Combustible materials outside fire enclosure	No such components or parts outside the enclosures.	N/A
6.4	Safeguards against fire under single fault conditions		P
6.4.1	Safeguard Method	Method by control of fire spread applied. See 6.4.5	P
6.4.2	Reduction of the likelihood of ignition under single fault conditions in PS1 circuits	Not applicable. See 6.4.1.	N/A
6.4.3	Reduction of the likelihood of ignition under single fault conditions in PS2 and PS3 circuits		N/A
6.4.3.1	General		N/A
6.4.3.2	Supplementary Safeguards		N/A
	Special conditions if conductors on printed boards are opened or peeled		N/A
6.4.3.3	Single Fault Conditions		N/A
	Special conditions for temperature limited by fuse		N/A
6.4.4	Control of fire spread in PS1 circuits	No PS1 circuit inside the equipment.	N/A
6.4.5	Control of fire spread in PS2 circuits	See below.	P
6.4.5.2	Supplementary safeguards	Compliance detailed as follows: – Printed board: rated min. V-1 – All other components: at least V-2 except for mounted on min. V-1 material or small parts of combustible material or components complying to relevant IEC standard.	P
6.4.6	Control of fire spread in PS3 circuit	No PS3 circuit inside the equipment.	N/A
6.4.7	Separation of combustible materials from a PIS	No PIS part	N/A
6.4.7.1	General		N/A
6.4.7.2	Separation by distance		N/A
6.4.7.3	Separation by a fire barrier		N/A
6.4.8	Fire enclosures and fire barriers	No need fire enclosure or fire barrier	N/A

EN 62368-1			
Clause	Requirement + Test	Result - Remark	Verdict
6.4.8.1	Fire enclosure and fire barrier material properties		N/A
6.4.8.2.1	Requirements for a fire barrier		N/A
6.4.8.2.2	Requirements for a fire enclosure		N/A
6.4.8.3	Constructional requirements for a fire enclosure and a fire barrier		N/A
6.4.8.3.1	Fire enclosure and fire barrier openings		N/A
6.4.8.3.2	Fire barrier dimensions		N/A
6.4.8.3.3	Top Openings in Fire Enclosure: dimensions (mm)		N/A
	Needle Flame test		N/A
6.4.8.3.4	Bottom Openings in Fire Enclosure, condition met a), b) and/or c) dimensions (mm)		N/A
	Flammability tests for the bottom of a fire enclosure		N/A
6.4.8.3.5	Integrity of the fire enclosure, condition met: a), b) or c).....		N/A
6.4.8.4	Separation of PIS from fire enclosure and fire barrier distance (mm) or flammability rating		N/A
6.5	Internal and external wiring		N/A
6.5.1	Requirements		N/A
6.5.2	Cross-sectional area (mm ²)		—
6.5.3	Requirements for interconnection to building wiring.....		N/A
6.6	Safeguards against fire due to connection to additional equipment		P
	External port limited to PS2 or complies with Clause Q.1	See appended table annex Q.1.	P

7	INJURY CAUSED BY HAZARDOUS SUBSTANCES		N/A
7.2	Reduction of exposure to hazardous substances	No hazardous substances.	N/A
7.3	Ozone exposure	No ozone.	N/A
7.4	Use of personal safeguards (PPE)		N/A
	Personal safeguards and instructions.....		—
7.5	Use of instructional safeguards and instructions		N/A
	Instructional safeguard (ISO 7010).....		—
7.6	Batteries		N/A

8	MECHANICALLY-CAUSED INJURY		P
8.1	General		P

EN 62368-1			
Clause	Requirement + Test	Result - Remark	Verdict
8.2	Mechanical energy source classifications	See ENERGY SOURCE IDENTIFICATION AND CLASSIFICATION TABLE for details.	P
8.3	Safeguards against mechanical energy sources		P
8.4	Safeguards against parts with sharp edges and corners		N/A
8.4.1	Safeguards		N/A
8.5	Safeguards against moving parts		N/A
8.5.1	MS2 or MS3 part required to be accessible for the function of the equipment		N/A
8.5.2	Instructional Safeguard		—
8.5.4	Special categories of equipment comprising moving parts		N/A
8.5.4.1	Large data storage equipment		N/A
8.5.4.2	Equipment having electromechanical device for destruction of media		N/A
8.5.4.2.1	Safeguards and Safety Interlocks.....:		N/A
8.5.4.2.2	Instructional safeguards against moving parts		N/A
	Instructional Safeguard		—
8.5.4.2.3	Disconnection from the supply		N/A
8.5.4.2.4	Probe type and force (N).....:		N/A
8.5.5	High Pressure Lamps		N/A
8.5.5.1	Energy Source Classification		N/A
8.5.5.2	High Pressure Lamp Explosion Test.....:		N/A
8.6	Stability		N/A
8.6.1	Product classification		N/A
	Instructional Safeguard		—
8.6.2	Static stability		N/A
8.6.2.2	Static stability test		N/A
	Applied Force.....:		—
8.6.2.3	Downward Force Test		N/A
8.6.3	Relocation stability test		N/A
	Unit configuration during 10° tilt.....:		—
8.6.4	Glass slide test		N/A
8.6.5	Horizontal force test (Applied Force).....:		N/A
	Position of feet or movable parts.....:		—
8.7	Equipment mounted to wall or ceiling		N/A

EN 62368-1			
Clause	Requirement + Test	Result - Remark	Verdict
8.7.1	Mounting Means (Length of screws (mm) and mounting surface)		N/A
8.7.2	Direction and applied force		N/A
8.8	Handles strength		N/A
8.8.1	Classification		N/A
8.8.2	Applied Force		N/A
8.9	Wheels or casters attachment requirements	No wheels or casters.	N/A
8.9.1	Classification		N/A
8.9.2	Applied force		—
8.10	Carts, stands and similar carriers	No carts, stands and similar carriers.	N/A
8.10.1	General		N/A
8.10.2	Marking and instructions		N/A
	Instructional Safeguard		—
8.10.3	Cart, stand or carrier loading test and compliance		N/A
	Applied force		—
8.10.4	Cart, stand or carrier impact test		N/A
8.10.5	Mechanical stability		N/A
	Applied horizontal force (N).....		—
8.10.6	Thermoplastic temperature stability (°C).....		N/A
8.11	Mounting means for rack mounted equipment		N/A
8.11.1	General		N/A
8.11.2	Product Classification		N/A
8.11.3	Mechanical strength test, variable <i>N</i>		N/A
8.11.4	Mechanical strength test 250N, including end stops		N/A
8.12	Telescoping or rod antennas	No telescoping or rod antennas	N/A
	Button/Ball diameter (mm)		—

9	THERMAL BURN INJURY		P
9.2	Thermal energy source classifications	Accessible part: TS1. (See appended table 5.4.1.4, 6.3.2, 9.0, B.2.6)	P
9.3	Safeguard against thermal energy sources	Accessible part: TS1. No safeguard required.	P
9.4	Requirements for safeguards		N/A
9.4.1	Equipment safeguard		N/A
9.4.2	Instructional safeguard		N/A

EN 62368-1			
Clause	Requirement + Test	Result - Remark	Verdict
10	RADIATION		P
10.2	Radiation energy source classification	See below.	P
10.2.1	General classification	RS1: LED are infra-red devices which ic considered as low power device	P
10.3	Protection against laser radiation		N/A
	Laser radiation that exists equipment:		—
	Normal, abnormal, single-fault.....:		N/A
	Instructional safeguard		—
	Tool		—
10.4	Protection against visible, infrared, and UV radiation	No visible, infrared, and UV radiation.	N/A
10.4.1	General		N/A
10.4.1.a)	RS3 for Ordinary and instructed persons		N/A
10.4.1.b)	RS3 accessible to a skilled person.....:		N/A
	Personal safeguard (PPE) instructional safeguard		—
10.4.1.c)	Equipment visible, IR, UV does not exceed RS1...:		N/A
10.4.1.d)	Normal, abnormal, single-fault conditions		N/A
10.4.1.e)	Enclosure material employed as safeguard is opaque		N/A
10.4.1.f)	UV attenuation.....:		N/A
10.4.1.g)	Materials resistant to degradation UV.....:		N/A
10.4.1.h)	Enclosure containment of optical radiation		N/A
10.4.1.i)	Exempt Group under normal operating conditions		N/A
10.4.2	Instructional safeguard		N/A
10.5	Protection against x-radiation	No x-radiation.	N/A
10.5.1	X- radiation energy source that exists equipment:		N/A
	Normal, abnormal, single fault conditions		N/A
	Equipment safeguards.....:		N/A
	Instructional safeguard for skilled person		N/A
10.5.3	Most unfavourable supply voltage to give maximum radiation		—
	Abnormal and single-fault condition.....:		N/A
	Maximum radiation (pA/kg).....:		N/A
10.6	Protection against acoustic energy sources	No acoustic energy sources.	N/A
10.6.1	General		N/A
10.6.2	Classification		N/A

EN 62368-1			
Clause	Requirement + Test	Result - Remark	Verdict
	Acoustic output, dB(A).....:		N/A
	Output voltage, unweighted r.m.s.....:		N/A
10.6.4	Protection of persons		N/A
	Instructional safeguards		N/A
	Equipment safeguard prevent ordinary person to RS2		—
	Means to actively inform user of increase sound pressure		—
	Equipment safeguard prevent ordinary person to RS2.....		—
10.6.5	Requirements for listening devices (headphones, earphones, etc.)		N/A
10.6.5.1	Corded passive listening devices with analog input		N/A
	Input voltage with 94 dB(A) L_{Aeq} acoustic pressure output.....:		—
10.6.5.2	Corded listening devices with digital input		N/A
	Maximum dB(A).....:		—
10.6.5.3	Cordless listening device		N/A
	Maximum dB(A).....:		—

B	NORMAL OPERATING CONDITION TESTS, ABNORMAL OPERATING CONDITION TESTS AND SINGLE FAULT CONDITION TESTS		P
B.2	Normal Operating Conditions	See below.	P
B.2.1	General requirements.....:	See Test Item Particulars and appended test tables.	P
	Audio Amplifiers and equipment with audio amplifiers.....:	No audio amplifiers.	N/A
B.2.3	Supply voltage and tolerances		P
B.2.5	Input test	See appended table B.2.5.	P
B.3	Simulated abnormal operating conditions		N/A
B.3.1	General requirements.....:		N/A
B.3.2	Covering of ventilation openings		N/A
B.3.3	D.C. mains polarity test	Not connected to D.C. mains.	N/A
B.3.4	Setting of voltage selector	No voltage selector.	N/A
B.3.5	Maximum load at output terminals.....:	See appended table B.3	P
B.3.6	Reverse battery polarity		N/A
B.3.7	Abnormal operating conditions as specified in Clause E.2.	No audio amplifiers.	N/A

EN 62368-1			
Clause	Requirement + Test	Result - Remark	Verdict
B.3.8	Safeguards functional during and after abnormal operating conditions		N/A
B.4	Simulated single fault conditions		P
B.4.2	Temperature controlling device open or short-circuited.....:	No temperature controlling device.	N/A
B.4.3	Motor tests	Stepper motors source used.	N/A
B.4.3.1	Motor blocked or rotor locked increasing the internal ambient temperature		N/A
B.4.4	Short circuit of functional insulation	See table B.4 for detail	P
B.4.4.1	Short circuit of clearances for functional insulation		P
B.4.4.2	Short circuit of creepage distances for functional insulation		P
B.4.4.3	Short circuit of functional insulation on coated printed boards	Not such coated printed board.	N/A
B.4.5	Short circuit and interruption of electrodes in tubes and semiconductors		N/A
B.4.6	Short circuit or disconnect of passive components		N/A
B.4.7	Continuous operation of components	The EUT is continuous operating type and no such components intended for short time operation or intermittent operation	N/A
B.4.8	Class 1 and Class 2 energy sources within limits during and after single fault conditions	Complied.	P
B.4.9	Battery charging under single fault conditions....:		N/A
C	UV RADIATION		N/A
C.1	Protection of materials in equipment from UV radiation	No UV radiation.	N/A
C.1.2	Requirements		N/A
C.1.3	Test method		N/A
C.2	UV light conditioning test		N/A
C.2.1	Test apparatus		N/A
C.2.2	Mounting of test samples		N/A
C.2.3	Carbon-arc light-exposure apparatus		N/A
C.2.4	Xenon-arc light exposure apparatus		N/A
D	TEST GENERATORS		N/A
D.1	Impulse test generators		N/A
D.2	Antenna interface test generator		N/A
D.3	Electronic pulse generator		N/A
E	TEST CONDITIONS FOR EQUIPMENT CONTAINING AUDIO AMPLIFIERS		N/A
E.1	Audio amplifier normal operating conditions		N/A

EN 62368-1			
Clause	Requirement + Test	Result - Remark	Verdict
	Audio signal voltage (V)		—
	Rated load impedance (Ω)		
E.2	Audio amplifier abnormal operating conditions		N/A
F	EQUIPMENT MARKINGS, INSTRUCTIONS, AND INSTRUCTIONAL SAFEGUARDS		P
F.1	General requirements	Considered, see below.	P
	Instructions – Language	Safety related equipment marking, instructions and instructional safeguards provided the English version. Other languages will be provided when submitted for national approval.	—
F.2	Letter symbols and graphical symbols	See below.	P
F.2.1	Letter symbols according to IEC60027-1	Letter symbols for quantities and units are complied with IEC 60027-1.	P
F.2.2	Graphic symbols IEC, ISO or manufacturer specific	Graphical symbols are complied with IEC 60417, ISO 3864-2, ISO 7000 or ISO 7010.	P
F.3	Equipment markings		P
F.3.1	Equipment marking locations	Equipment marking is located on the equipment surface and is easily visible.	P
F.3.2	Equipment identification markings	See below.	P
F.3.2.1	Manufacturer identification	See copy of Marking Plate Label.	—
F.3.2.2	Model identification	See copy of Marking Plate Label.	—
F.3.3	Equipment rating markings	See below.	P
F.3.3.1	Equipment with direct connection to mains		N/A
F.3.3.2	Equipment without direct connection to mains	Optionally provided on marking plate.	P
F.3.3.3	Nature of supply voltage.....	DC	—
F.3.3.4	Rated voltage	56 Vdc	—
F.3.3.4	Rated frequency.....		—
F.3.3.6	Rated current or rated power	1.16 A	—
F.3.3.7	Equipment with multiple supply connections		P
F.3.4	Voltage setting device	No voltage setting device.	N/A
F.3.5	Terminals and operating devices		N/A
F.3.5.1	Mains appliance outlet and socket-outlet markings.....	No mains appliance outlet and socket-outlet.	N/A
F.3.5.2	Switch position identification marking.....	No such switch used.	N/A

EN 62368-1			
Clause	Requirement + Test	Result - Remark	Verdict
F.3.5.3	Replacement fuse identification and rating markings.....:		N/A
F.3.5.4	Replacement battery identification marking.....:		N/A
F.3.5.5	Terminal marking location	No such terminal.	N/A
F.3.6	Equipment markings related to equipment classification		N/A
F.3.6.1	Class I Equipment		N/A
F.3.6.1.1	Protective earthing conductor terminal		N/A
F.3.6.1.2	Neutral conductor terminal		N/A
F.3.6.1.3	Protective bonding conductor terminals		N/A
F.3.6.2	Class II equipment (IEC60417-5172)		N/A
F.3.6.2.1	Class II equipment with or without functional earth		N/A
F.3.6.2.2	Class II equipment with functional earth terminal marking		N/A
F.3.7	Equipment IP rating marking :	This equipment is classified as IPX0.	—
F.3.8	External power supply output marking	Not such equipment	N/A
F.3.9	Durability, legibility and permanence of marking	See below.	P
F.3.10	Test for permanence of markings	The label was subjected to the permanence of marking test. The label was rubbed with cloth soaked with water for 15 sec. and then again for 15 sec. with the cloth soaked with Petroleum Spirit. After this test there was no damage to the label. The marking on the label did not fade. There was no curling or lifting of the label edge.	P
F.4	Instructions		P
	a) Equipment for use in locations where children not likely to be present - marking		N/A
	b) Instructions given for installation or initial use	User guide have state that correct and safe installation.	P
	c) Equipment intended to be fastened in place		N/A
	d) Equipment intended for use only in restricted access area	The equipment is not intended for use only in restricted access area.	N/A
	e) Audio equipment terminals classified as ES3 and other equipment with terminals marked in accordance F.3.6.1	The equipment is not audio equipment.	N/A
	f) Protective earthing employed as safeguard		N/A
	g) Protective earthing conductor current exceeding ES 2 limits		N/A

EN 62368-1			
Clause	Requirement + Test	Result - Remark	Verdict
	h) Symbols used on equipment	No instructional safeguard symbols.	N/A
	i) Permanently connected equipment not provided with all-pole mains switch	Equipment is not intended for permanently connected.	N/A
	j) Replaceable components or modules providing safeguard function	Replaceable components bot providing safeguard function	N/A
F.5	Instructional safeguards	No instructional safeguard is considered as necessary	N/A
	Where “instructional safeguard” is referenced in the test report it specifies the required elements, location of marking and/or instruction		N/A
G	COMPONENTS		P
G.1	Switches		N/A
G.1.1	General requirements		N/A
G.1.2	Ratings, endurance, spacing, maximum load		N/A
G.2	Relays		N/A
G.2.1	General requirements		N/A
G.2.2	Overload test		N/A
G.2.3	Relay controlling connectors supply power		N/A
G.2.4	Mains relay, modified as stated in G.2		N/A
G.3	Protection Devices		N/A
G.3.1	Thermal cut-offs	No thermal cut-offs.	N/A
G.3.1.1a) &b)	Thermal cut-outs separately approved according to IEC 60730 with conditions indicated in a) & b)		N/A
G.3.1.1c)	Thermal cut-outs tested as part of the equipment as indicated in c)		N/A
G.3.1.2	Thermal cut-off connections maintained and secure		N/A
G.3.2	Thermal links		N/A
G.3.2.1a)	Thermal links separately tested with IEC 60691	No thermal links.	N/A
G.3.2.1b)	Thermal links tested as part of the equipment		N/A
	Aging hours (H)		—
	Single Fault Condition		—
	Test Voltage (V) and Insulation Resistance (Ω) ..		—
G.3.3	PTC Thermistors		N/A
G.3.4	Overcurrent protection devices	No overcurrent protection devices	N/A
G.3.5	Safeguards components not mentioned in G.3.1 to G.3.5		N/A
G.3.5.1	Non-resettable devices suitably rated and marking provided	No such non-resettable protective devices provided.	N/A
G.3.5.2	Single faults conditions.....		N/A

EN 62368-1			
Clause	Requirement + Test	Result - Remark	Verdict
G.4	Connectors		P
G.4.1	Spacings		N/A
G.4.2	Mains connector configuration		N/A
G.4.3	Plug is shaped that insertion into mains socket-outlets or appliance coupler is unlikely	No mismatch could occur.	P
G.5	Wound Components		N/A
G.5.1	Wire insulation in wound components.....	No such component	N/A
G.5.1.2 a)	Two wires in contact inside wound component, angle between 45° and 90°		N/A
G.5.1.2 b)	Construction subject to routine testing		N/A
G.5.2	Endurance test on wound components		N/A
G.5.2.1	General test requirements		N/A
G.5.2.2	Heat run test		N/A
	Time (s)		—
	Temperature (°C)		—
G.5.2.3	Wound Components supplied by mains		N/A
G.5.3	Transformers		N/A
G.5.3.1	Requirements applied (IEC61204-7, IEC61558-1/-2, and/or IEC62368-1).....	No such component	N/A
	Position		—
	Method of protection		—
G.5.3.2	Insulation		N/A
	Protection from displacement of windings.....		—
G.5.3.3	Overload test.....		N/A
G.5.3.3.1	Test conditions		N/A
G.5.3.3.2	Winding Temperatures testing in the unit		N/A
G.5.3.3.3	Winding Temperatures - Alternative test method		N/A
G.5.4	Motors		N/A
G.5.4.1	General requirements		N/A
	Position		—
G.5.4.2	Test conditions		N/A
G.5.4.3	Running overload test		N/A
G.5.4.4	Locked-rotor overload test		N/A
	Test duration (days)		—
G.5.4.5	Running overload test for d.c. motors in secondary circuits		N/A
G.5.4.5.2	Tested in the unit		N/A

EN 62368-1			
Clause	Requirement + Test	Result - Remark	Verdict
	Electric strength test (V)		—
G.5.4.5.3	Tested on the Bench - Alternative test method; test time (h)		N/A
	Electric strength test (V)		—
G.5.4.6	Locked-rotor overload test for d.c. motors in secondary circuits		N/A
G.5.4.6.2	Tested in the unit		N/A
	Maximum Temperature		N/A
	Electric strength test (V)		N/A
G.5.4.6.3	Tested on the bench - Alternative test method; test time (h)		N/A
	Electric strength test (V)		N/A
G.5.4.7	Motors with capacitors		N/A
G.5.4.8	Three-phase motors		N/A
G.5.4.9	Series motors		N/A
	Operating voltage		—
G.6	Wire Insulation		N/A
G.6.1	General		N/A
G.6.2	Solvent-based enamel wiring insulation		N/A
G.7	Mains supply cords		N/A
G.7.1	General requirements		N/A
	Type		—
	Rated current (A).....		—
	Cross-sectional area (mm ²), (AWG).....		—
G.7.2	Compliance and test method		N/A
G.7.3	Cord anchorages and strain relief for non-detachable power supply cords		N/A
G.7.3.2	Cord strain relief		N/A
G.7.3.2.1	Requirements		N/A
	Strain relief test force (N)		—
G.7.3.2.2	Strain relief mechanism failure		N/A
G.7.3.2.3	Cord sheath or jacket position, distance (mm) ... :		—
G.7.3.2.4	Strain relief comprised of polymeric material		N/A
G.7.4	Cord Entry		N/A
G.7.5	Non-detachable cord bend protection		N/A
G.7.5.1	Requirements		N/A
G.7.5.2	Mass (g)		—

EN 62368-1			
Clause	Requirement + Test	Result - Remark	Verdict
	Diameter (m)		—
	Temperature (°C)		—
G.7.6	Supply wiring space		N/A
G.7.6.2	Stranded wire		N/A
G.7.6.2.1	Test with 8 mm strand		N/A
G.8	Varistors		N/A
G.8.1	General requirements		N/A
G.8.2	Safeguard against shock		N/A
G.8.3	Safeguard against fire		N/A
G.8.3.2	Varistor overload test		N/A
G.8.3.3	Temporary overvoltage		N/A
G.9	Integrated Circuit (IC) Current Limiters		N/A
G.9.1 a)	Manufacturer defines limit at max. 5A.		N/A
G.9.1 b)	Limiters do not have manual operator or reset		N/A
G.9.1 c)	Supply source does not exceed 250 VA		—
G.9.1 d)	IC limiter output current (max. 5A).....		—
G.9.1 e)	Manufacturers' defined drift		—
G.9.2	Test Program 1		N/A
G.9.3	Test Program 2		N/A
G.9.4	Test Program 3		N/A
G.10	Resistors		N/A
G.10.1	General requirements		N/A
G.10.2	Resistor test		N/A
G.10.3	Test for resistors serving as safeguards between the mains and an external circuit consisting of a coaxial cable		N/A
G.10.3.1	General requirements		N/A
G.10.3.2	Voltage surge test		N/A
G.10.3.3	Impulse test		N/A
G.11	Capacitor and RC units		N/A
G.11.1	General requirements		N/A
G.11.2	Conditioning of capacitors and RC units		N/A
G.11.3	Rules for selecting capacitors		N/A
G.12	Optocouplers		N/A
	Optocouplers comply with IEC 60747-5-5:2007 Spacing or Electric Strength Test (specify option and test results).....		N/A

EN 62368-1			
Clause	Requirement + Test	Result - Remark	Verdict
	Type test voltage Vini		—
	Routine test voltage, Vini,b		—
G.13	Printed boards		P
G.13.1	General requirements		P
G.13.2	Uncoated printed boards		P
G.13.3	Coated printed boards		N/A
G.13.4	Insulation between conductors on the same inner surface		N/A
	Compliance with cemented joint requirements (Specify construction).....		—
G.13.5	Insulation between conductors on different surfaces		N/A
	Distance through insulation		N/A
	Number of insulation layers (pcs)		—
G.13.6	Tests on coated printed boards		N/A
G.13.6.1	Sample preparation and preliminary inspection		N/A
G.13.6.2a)	Thermal conditioning		N/A
G.13.6.2b)	Electric strength test		N/A
G.13.6.2c)	Abrasion resistance test		N/A
G.14	Coating on components terminals		N/A
G.14.1	Requirements		N/A
G.15	Liquid filled components		N/A
G.15.1	General requirements		N/A
G.15.2	Requirements		N/A
G.15.3	Compliance and test methods		N/A
G.15.3.1	Hydrostatic pressure test		N/A
G.15.3.2	Creep resistance test		N/A
G.15.3.3	Tubing and fittings compatibility test		N/A
G.15.3.4	Vibration test		N/A
G.15.3.5	Thermal cycling test		N/A
G.15.3.6	Force test		N/A
G.15.4	Compliance		N/A
G.16	IC including capacitor discharge function (ICX)		N/A
a)	Humidity treatment in accordance with sc5.4.8 – 120 hours		N/A
b)	Impulse test using circuit 2 with Uc = to transient voltage		N/A

EN 62368-1			
Clause	Requirement + Test	Result - Remark	Verdict
C1)	Application of ac voltage at 110% of rated voltage for 2.5 minutes		N/A
C2)	Test voltage		—
D1)	10,000 cycles on and off using capacitor with smallest capacitance resistor with largest resistance specified by manufacturer		N/A
D2)	Capacitance		—
D3)	Resistance		—
H	CRITERIA FOR TELEPHONE RINGING SIGNALS		N/A
H.1	General		N/A
H.2	Method A		N/A
H.3	Method B		N/A
H.3.1	Ringling signal		N/A
H.3.1.1	Frequency (Hz)		—
H.3.1.2	Voltage (V)		—
H.3.1.3	Cadence; time (s) and voltage (V)		—
H.3.1.4	Single fault current (mA):.....		—
H.3.2	Tripping device and monitoring voltage.....		N/A
H.3.2.1	Conditions for use of a tripping device or a monitoring voltage complied with		N/A
H.3.2.2	Tripping device		N/A
H.3.2.3	Monitoring voltage (V)		—
J	INSULATED WINDING WIRES FOR USE WITHOUT INTERLEAVED INSULATION		N/A
	General requirements		N/A
K	SAFETY INTERLOCKS		N/A
K.1	General requirements	No safety interlock provided within the equipment.	N/A
K.2	Components of safety interlock safeguard mechanism		N/A
K.3	Inadvertent change of operating mode		N/A
K.4	Interlock safeguard override		N/A
K.5	Fail-safe		N/A
	Compliance		N/A
K.6	Mechanically operated safety interlocks		N/A
K.6.1	Endurance requirement		N/A
K.6.2	Compliance and Test method		N/A
K.7	Interlock circuit isolation		N/A

EN 62368-1			
Clause	Requirement + Test	Result - Remark	Verdict
K.7.1	Separation distance for contact gaps & interlock circuit elements (type and circuit location)		N/A
K.7.2	Overload test, Current (A)		N/A
K.7.3	Endurance test		N/A
K.7.4	Electric strength test		N/A
L	DISCONNECT DEVICES		N/A
L.1	General requirements		N/A
L.2	Permanently connected equipment		N/A
L.3	Parts that remain energized		N/A
L.4	Single phase equipment		N/A
L.5	Three-phase equipment		N/A
L.6	Switches as disconnect devices		N/A
L.7	Plugs as disconnect devices		N/A
L.8	Multiple power sources		N/A
M	EQUIPMENT CONTAINING BATTERIES AND THEIR PROTECTION CIRCUITS		N/A
M.1	General requirements		N/A
M.2	Safety of batteries and their cells		N/A
M.2.1	Requirements		N/A
M.2.2	Compliance and test method (identify method)...		N/A
M.3	Protection circuits		N/A
M.3.1	Requirements		N/A
M.3.2	Tests		N/A
	- Overcharging of a rechargeable battery		N/A
	- Unintentional charging of a non-rechargeable battery		N/A
	- Reverse charging of a rechargeable battery		N/A
	- Excessive discharging rate for any battery		N/A
M.3.3	Compliance		N/A
M.4	Additional safeguards for equipment containing secondary lithium battery		N/A
M.4.1	General		N/A
M.4.2	Charging safeguards		N/A
M.4.2.1	Charging operating limits		N/A
M.4.2.2a)	Charging voltage, current and temperature.....		—
M.4.2.2 b)	Single faults in charging circuitry.....		—
M.4.3	Fire Enclosure		N/A
M.4.4	Endurance of equipment containing a secondary lithium battery		N/A

EN 62368-1			
Clause	Requirement + Test	Result - Remark	Verdict
M.4.4.2	Preparation		N/A
M.4.4.3	Drop and charge/discharge function tests		N/A
	Drop		N/A
	Charge		N/A
	Discharge		N/A
M.4.4.4	Charge-discharge cycle test		N/A
M.4.4.5	Result of charge-discharge cycle test		N/A
M.5	Risk of burn due to short circuit during carrying		N/A
M.5.1	Requirement		N/A
M.5.2	Compliance and Test Method (Test of P.2.3)		N/A
M.6	Prevention of short circuits and protection from other effects of electric current		N/A
M.6.1	Short circuits		N/A
M.6.1.1	General requirements		N/A
M.6.1.2	Test method to simulate an internal fault		N/A
M.6.1.3	Compliance (Specify M.6.1.2 or alternative method)		N/A
M.6.2	Leakage current (mA)		N/A
M.7	Risk of explosion from lead acid and NiCd batteries		N/A
M.7.1	Ventilation preventing explosive gas concentration		N/A
M.7.2	Compliance and test method		N/A
M.8	Protection against internal ignition from external spark sources of lead acid batteries		N/A
M.8.1	General requirements		N/A
M.8.2	Test method		N/A
M.8.2.1	General requirements		N/A
M.8.2.2	Estimation of hypothetical volume V_z (m ³ /s)		—
M.8.2.3	Correction factors.....		—
M.8.2.4	Calculation of distance d (mm)		—
M.9	Preventing electrolyte spillage		N/A
M.9.1	Protection from electrolyte spillage		N/A
M.9.2	Tray for preventing electrolyte spillage		N/A
M.10	Instructions to prevent reasonably foreseeable misuse (Determination of compliance: inspection, data review; or abnormal testing)		N/A
N	ELECTROCHEMICAL POTENTIALS		N/A
	Metal(s) used		—

EN 62368-1			
Clause	Requirement + Test	Result - Remark	Verdict
O	MEASUREMENT OF CREEPAGE DISTANCES AND CLEARANCES		N/A
	Figures O.1 to O.20 of this Annex applied		—
P	SAFEGUARDS AGAINST ENTRY OF FOREIGN OBJECTS AND SPILLAGE OF INTERNAL LIQUIDS		P
P.1	General requirements	No opening	P
P.2.2	Safeguards against entry of foreign object		N/A
	Location and Dimensions (mm)		—
P.2.3	Safeguard against the consequences of entry of foreign object		N/A
P.2.3.1	Safeguards against the entry of a foreign object		N/A
	Openings in transportable equipment		N/A
	Transportable equipment with metalized plastic parts.....		N/A
P.2.3.2	Openings in transportable equipment in relation to metallized parts of a barrier or enclosure (identification of supplementary safeguard)		N/A
P.3	Safeguards against spillage of internal liquids	No internal liquids.	N/A
P.3.1	General requirements		N/A
P.3.2	Determination of spillage consequences		N/A
P.3.3	Spillage safeguards		N/A
P.3.4	Safeguards effectiveness		N/A
P.4	Metallized coatings and adhesive securing parts		N/A
P.4.2 a)	Conditioning testing		N/A
	T _c (°C).....		—
	T _r (°C)		—
	T _a (°C)		—
P.4.2 b)	Abrasion testing		N/A
P.4.2 c)	Mechanical strength testing		N/A
Q	CIRCUITS INTENDED FOR INTERCONNECTION WITH BUILDING WIRING		P
Q.1	Limited power sources	See below.	P
Q.1.1 a)	Inherently limited output		N/A
Q.1.1 b)	Impedance limited output		N/A
	- Regulating network limited output under normal operating and simulated single fault condition		P
Q.1.1 c)	Overcurrent protective device limited output		N/A
Q.1.1 d)	IC current limiter complying with G.9		N/A
Q.1.2	Compliance and test method	See appended table Q.1 for details.	P

EN 62368-1			
Clause	Requirement + Test	Result - Remark	Verdict
Q.2	Test for external circuits – paired conductor cable		N/A
	Maximum output current (A) :		—
	Current limiting method..... :		—
R	LIMITED SHORT CIRCUIT TEST		N/A
R.1	General requirements		N/A
R.2	Determination of the overcurrent protective device and circuit		N/A
R.3	Test method Supply voltage (V) and short-circuit current (A). :		N/A
S	TESTS FOR RESISTANCE TO HEAT AND FIRE		N/A
S.1	Flammability test for fire enclosures and fire barrier materials of equipment where the steady state power does not exceed 4 000 W	No need fire enclosures or fire barrier	N/A
	Samples, material :		—
	Wall thickness (mm)..... :		—
	Conditioning (°C)..... :		—
	Test flame according to IEC 60695-11-5 with conditions as set out		N/A
	- Material not consumed completely		N/A
	- Material extinguishes within 30s		N/A
	- No burning of layer or wrapping tissue		N/A
S.2	Flammability test for fire enclosure and fire barrier integrity		N/A
	Samples, material :		—
	Wall thickness (mm)..... :		—
	Conditioning (°C)..... :		—
	Test flame according to IEC 60695-11-5 with conditions as set out		N/A
	Test specimen does not show any additional hole		N/A
S.3	Flammability test for the bottom of a fire enclosure		N/A
	Samples, material :		—
	Wall thickness (mm)..... :		—
	Cheesecloth did not ignite		N/A
S.4	Flammability classification of materials		N/A
S.5	Flammability test for fire enclosures and fire barrier materials of equipment where the steady state power does not exceed 4 000 W		N/A
	Samples, material :		—

EN 62368-1			
Clause	Requirement + Test	Result - Remark	Verdict
	Wall thickness (mm)..... :		—
	Conditioning (test condition), (°C) :		—
	Test flame according to IEC 60695-11-20 with conditions as set out		N/A
	After every test specimen was not consumed completely		N/A
	After fifth flame application, flame extinguished within 1 min		N/A
T	MECHANICAL STRENGTH TESTS		P
T.1	General requirements		P
T.2	Steady force test, 10 N :		N/A
T.3	Steady force test, 30 N :		N/A
T.4	Steady force test, 100 N :		N/A
T.5	Steady force test, 250 N :	See appended table T.5	P
T.6	Enclosure impact test	See appended table T.6	P
	Fall test		N/A
	Swing test		N/A
T.7	Drop test :		N/A
T.8	Stress relief test :		N/A
T.9	Impact Test (glass)		N/A
T.9.1	General requirements		N/A
T.9.2	Impact test and compliance		N/A
	Impact energy (J) :		—
	Height (m) :		—
T.10	Glass fragmentation test..... :		N/A
T.11	Test for telescoping or rod antennas		N/A
	Torque value (Nm) :		—
U	MECHANICAL STRENGTH OF CATHODE RAY TUBES (CRT) AND PROTECTION AGAINST THE EFFECTS OF IMPLOSION		N/A
U.1	General requirements	No CRTs.	N/A
U.2	Compliance and test method for non-intrinsically protected CRTs		N/A
U.3	Protective Screen :		N/A
V	DETERMINATION OF ACCESSIBLE PARTS (FINGERS, PROBES AND WEDGES)		P
V.1	Accessible parts of equipment		P
V.2	Accessible part criterion		P

EN 62368-1			
Clause	Requirement + Test	Result - Remark	Verdict

4.1.2	TABLE: List of critical components				P
Object / part No.	Manufacturer/ trademark	Type / model	Technical data	Standard	Mark(s) of conformity ¹
Metal enclosure	Interchangeable	Interchangeable	1.0 mm thick. min.	--	--
PCB	Interchangeable	Interchangeable	V-1 min., 130 °C min.	UL 796	UL
Thermal Pad	Interchangeable	Interchangeable	Min V-2.	UL 94	UL
Switching Power Adapter	Li Tone Electronics Co Ltd	LTE65ES-S7-1	Input: 100-240 Vac, 50/60 Hz, 2 A Output: 56 Vdc, 1.16 A	IEC 62368-1: 2014	CB by UL Demko

Supplementary information:

¹) Provided evidence ensures the agreed level of compliance. See OD-CB2039.

²) Description line content is optional. Main line description needs to clearly detail the component used for testing

EN 62368-1			
Clause	Requirement + Test	Result - Remark	Verdict
4.8.4, 4.8.5	TABLE: Lithium coin/button cell batteries mechanical tests		N/A
(The following mechanical tests are conducted in the sequence noted.)			
4.8.4.2	TABLE: Stress Relief test		—
Part	Material	Oven Temperature (°C)	Comments
4.8.4.3	TABLE: Battery replacement test		—
Battery part no..... :			—
Battery Installation/withdrawal		Battery Installation/Removal Cycle	Comments
		1	
		2	
		3	
		4	
		5	
		6	
		8	
		9	
		10	
4.8.4.4	TABLE: Drop test		—
Impact Area	Drop Distance	Drop No.	Observations
		1	
		2	
		3	
4.8.4.5	TABLE: Impact		—
Impacts per surface	Surface tested	Impact energy (Nm)	Comments
4.8.4.6	TABLE: Crush test		—
Test position	Surface tested	Crushing Force (N)	Duration force applied (s)
Supplementary information:			

4.8.5	TABLE: Lithium coin/button cell batteries mechanical test result	N/A
-------	---	-----

EN 62368-1			
Clause	Requirement + Test	Result - Remark	Verdict
Supplementary information:			

5.2	Table: Classification of electrical energy sources						N/A
5.2.2.2 – Steady State Voltage and Current conditions							
No.	Supply Voltage	Location (e.g. circuit designation)	Test conditions	Parameters			ES Class
				U (Vrms or Vpk)	I (Apk or Arms)	Hz	
--	--	--	Normal	--	--	--	--
			Abnormal	--	--	--	
			Single fault – SC/OC	--	--	--	
5.2.2.3 - Capacitance Limits							
No.	Supply Voltage	Location (e.g. circuit designation)	Test conditions	Parameters		ES Class	
				Capacitance, nF	Upk (V)		
--	--	--	Normal	--	--	--	
			Abnormal	--	--		
			Single fault – SC/OC	--	--		
5.2.2.4 - Single Pulses							
No.	Supply Voltage	Location (e.g. circuit designation)	Test conditions	Parameters			ES Class
				Duration (ms)	Upk (V)	Ipk (mA)	
--	--	--	Normal	--	--	--	--
			Abnormal	--	--	--	
			Single fault – SC/OC	--	--	--	
5.2.2.5 - Repetitive Pulses							
No.	Supply Voltage	Location (e.g. circuit designation)	Test conditions	Parameters			ES Class
				Off time (ms)	Upk (V)	Ipk (mA)	
--	--	--	Normal	--	--	--	--
			Abnormal	--	--	--	
			Single fault – SC/OC	--	--	--	

EN 62368-1			
Clause	Requirement + Test	Result - Remark	Verdict

Test Conditions:
 Normal –
 Abnormal -
 Supplementary information: SC=Short Circuit, OC=Short Circuit
No single fault conditions considered necessary because the EUS is supplied by an approved power supply which are meet ES1.

5.4.1.4, 6.3.2, 9.0, B.2.6	TABLE: Temperature measurements					P
	Supply voltage (V)	56Vdc	—	48 Vdc	—	—
	Ambient T _{min} (°C)	—	—	—	—	—
	Ambient T _{max} (°C)	—	—	—	—	—
	T _{ma} (°C)	—	—	—	—	—
Maximum measured temperature T of part/at:		T (°C)				Allowed T _{max} (°C)
Under normal operating (Clause 5.4.1.4 and Annex B.2.6)		—	—	—	—	—
1	PCB neat NTC(F1), (1-Port EPoC Rx)	44.9	60.5	—	—	130
2	PCB neat U1, (1-Port EPoC Rx)	51.4	67.0	—	—	130
3	PCB neat U2, (1-Port EPoC Rx)	57.0	72.6	—	—	130
4	T2 body, (1-Port EPoC Rx)	49.1	64.7	—	—	105
5	PCB near Q3, (1-Port EPoC Rx)	26.1	41.7	—	—	130
Ambient		24.4	Shift to 40	—	—	—
Following parts located on enclosure surface (accessible parts)		--	--	—	—	—
6	DC connector, (1-Port EPoC Rx)	37.0	37.6	—	—	77
7	Enclosure outside, (1-Port EPoC Rx)	38.8	39.4	—	—	60
Ambient		24.4	Shift to 25	—	—	—
8	PCB neat NTC(F1), (1-Port EPoC Tx)	64.0	79.6	—	—	130
9	PCB neat U1, (1-Port EPoC Tx)	54.1	69.7	—	—	130
10	PCB neat U2, (1-Port EPoC Tx)	33.5	49.1	—	—	130
11	T2 body, (1-Port EPoC Tx)	51.9	67.5	—	—	105
12	PCB near Q3, (1-Port EPoC Tx)	49.6	65.2	—	—	130
Ambient		24.4	Shift to 40	—	—	—
Following parts located on enclosure surface (accessible parts)		—	—	—	—	—
13	DC connector, (1-Port EPoC Tx)	39.4	40.0	—	—	77
14	Enclosure outside, (1-Port EPoC Tx)	42.4	43.0	—	—	60

EN 62368-1							
Clause	Requirement + Test			Result - Remark		Verdict	
Ambient	24.4	Shift to 25	—	—	—	—	—
Under Abnormal operating (Clause B.3 and B.4) Output overload	—	—	—	—	—	—	—
1 PCB neat NTC(F1), (1-Port EPoC Rx)	55.5	71.3	—	—	—	—	300
2 PCB neat U1, (1-Port EPoC Rx)	59.8	75.6	—	—	—	—	300
3 PCB neat U2, (1-Port EPoC Rx)	64.8	80.6	—	—	—	—	300
4 T2 body, (1-Port EPoC Rx)	63.6	79.4	—	—	—	—	300
5 PCB near Q3, (1-Port EPoC Rx)	27.1	42.9	—	—	—	—	300
Ambient	24.2	Shift to 40	—	—	—	—	—
Following parts located on enclosure surface (accessible parts)	—	—	—	—	—	—	—
6 DC connector, (1-Port EPoC Rx)	41.9	42.7	—	—	—	—	87
7 Enclosure outside, (1-Port EPoC Rx)	45.4	46.2	—	—	—	—	70
Ambient	24.2	Shift to 25	—	—	—	—	—
8 PCB neat NTC(F1), (1-Port EPoC Tx)	97.7	113.5	—	—	—	—	300
9 PCB neat U1, (1-Port EPoC Tx)	64.9	80.7	—	—	—	—	300
10 PCB neat U2, (1-Port EPoC Tx)	37.0	52.8	—	—	—	—	300
11 T2 body, (1-Port EPoC Tx)	61.3	77.1	—	—	—	—	300
12 PCB near Q3, (1-Port EPoC Tx)	59.7	75.5	—	—	—	—	300
Ambient	24.2	Shift to 40	—	—	—	—	—
Following parts located on enclosure surface (accessible parts)	—	—	—	—	—	—	—
13 DC connector, (1-Port EPoC Tx)	45.9	46.7	—	—	—	—	87
14 Enclosure outside, (1-Port EPoC Tx)	53.6	54.4	—	—	—	—	70
Ambient	24.2	Shift to 25.0	—	—	—	—	—
Supplementary information:							
Temperature T of winding:	t ₁ (°C)	R ₁ (Ω)	t ₂ (°C)	R ₂ (Ω)	T (°C)	Allowed T _{max} (°C)	Insulation class
Supplementary information:							
<ol style="list-style-type: none"> The apparatus was submitted and evaluated for maximum manufacturer's recommended ambient (T_{ma}) of 40°C. The temperatures were measured under worst case normal mode defined in 3.3.7.4 and as described in B.2.5 at voltages as above. Temperature limits are calculated as follows: <ul style="list-style-type: none"> - max. temp. of 130 °C (PCB) User accessible area: <ul style="list-style-type: none"> - external surfaces touched in normal use (>11 s and <10 sec), 60 °C for metal; 77 °C for plastic 							

EN 62368-1			
Clause	Requirement + Test	Result - Remark	Verdict
5.4.1.10.2	TABLE: Vicat softening temperature of thermoplastics		N/A
Penetration (mm)			—
Object/ Part No./Material	Manufacturer/t rademark	T softening (°C)	
--	--	--	
supplementary information:			

5.4.1.10.3	TABLE: Ball pressure test of thermoplastics			N/A
Allowed impression diameter (mm)		≤ 2 mm		—
Object/Part No./Material	Manufacturer/trademark	Test temperature (°C)	Impression diameter (mm)	
--	--	--	--	
Supplementary information:				

5.4.2.2, 5.4.2.4 and 5.4.3	TABLE: Minimum Clearances/Creepage distance						N/A
Clearance (cl) and creepage distance (cr) at/of/between:	Up (V)	U r.m.s. (V)	Frequenc y (kHz) ¹	Required cl (mm)	cl (mm) ²	Required ³ cr (mm)	cr (mm)
Basic/supplementary:							
--	--	--	--	--	--	--	--
Reinforced:							
--	--	--	--	--	--	--	--
Supplementary information:							

EN 62368-1			
Clause	Requirement + Test	Result - Remark	Verdict

5.4.2.3	TABLE: Minimum Clearances distances using required withstand voltage			N/A
	Overvoltage Category (OV):			
	Pollution Degree:			
Clearance distanced between:	Required withstand voltage	Required cl (mm)	Measured cl (mm)	
--	--	--	--	
Supplementary information:				

5.4.2.4	TABLE: Clearances based on electric strength test			N/A
Test voltage applied between:	Required cl (mm)	Test voltage (kV) peak/ r.m.s. / d.c.	Breakdown Yes / No	
Supplementary information:				

5.4.4.2, 5.4.4.5 c) 5.4.4.9	TABLE: Distance through insulation measurements					N/A
Distance through insulation di at/of:	Peak voltage (V)	Frequency (kHz)	Material	Required DTI (mm)	DTI (mm)	
--	--	--	--			
Supplementary information:						

5.4.9	TABLE: Electric strength tests				N/A
Test voltage applied between:	Voltage shape (AC, DC)		Test voltage (V)	Breakdown Yes / No	
Functional:					
--	--	--	--	--	
Basic/supplementary:					
--	--	--	--	--	
Reinforced:					
--	--	--	--	--	
Supplementary information:					

5.5.2.2	TABLE: Stored discharge on capacitors					N/A
Supply Voltage (V), Hz	Test Location	Operating Condition (N, S)	Switch position On or off	Measured Voltage (after 2 seconds)	ES Classification	

EN 62368-1					
Clause	Requirement + Test			Result - Remark	Verdict
--	--	--	--	--	--
Supplementary information: X-capacitors installed for testing are: <input type="checkbox"/> bleeding resistor rating: <input type="checkbox"/> ICX: Notes: A. Test Location: Phase to Neutral; Phase to Phase; Phase to Earth; and/or Neutral to Earth B. Operating condition abbreviations: N – Normal operating condition (e.g., normal operation, or open fuse); S –Single fault condition					

5.6.6.2	TABLE: Resistance of protective conductors and terminations				N/A
Accessible part	Test current (A)	Duration (min)	Voltage drop (V)	Resistance (Ω)	
--	--	--	--	--	--
Supplementary information:					

5.7.2.2, 5.7.4	TABLE: Earthed accessible conductive part		N/A
Supply voltage..... :			—
Location	Test conditions specified in 6.1 of IEC 60990 or Fault Condition No in IEC 60990 clause 6.2.2.1 through 6.2.2.8, except for 6.2.2.7		Touch current (mA)
	1		
	2*		
	3		
	4		
	5		
	6		
	8		
Supplementary Information:			
Notes:			
[1] Supply voltage is the anticipated maximum Touch Voltage			
[2] Earthed neutral conductor [Voltage differences less than 1% or more]			
[3] Specify method used for measurement as described in IEC 60990 sub-clause 4.3			
[4] IEC60990, sub-clause 6.2.2.7, Fault 7 not applicable.			
[5] (*) IEC60990, sub-clause 6.2.2.2 is not applicable if switch or disconnect device (e.g., appliance coupler) provided.			

EN 62368-1			
Clause	Requirement + Test	Result - Remark	Verdict

6.2.2	Table: Electrical power sources (PS) measurements for classification					N/A
Source	Description	Measurement	Max Power after 3 s	Max Power after 5 s ^{*)}	PS Classification	
		Power (W) :				
		V _A (V) :				
		I _A (A) :				

Supplementary Information:
 1) All circuits as PS2.
 2) Output terminals as PS2. For output data terminals see appended table Q.1.

6.2.3.1	Table: Determination of Potential Ignition Sources (Arcing PIS)				N/A
Location	Open circuit voltage After 3 s (V _p)	Measured r.m.s current (I _{rms})	Calculated value (V _p x I _{rms})	Arcing PIS? Yes / No	
--	--	--	--	--	

Supplementary information:
 An Arcing PIS requires a minimum of 50 V (peak) a.c. or d.c. An Arcing PIS is established when the product of the open circuit voltage (V_p) and normal operating condition rms current (I_{rms}) is greater than 15.

6.2.3.2	Table: Determination of Potential Ignition Sources (Resistive PIS)					N/A
Circuit Location (x-y)	Operating Condition (Normal / Describe Single Fault)	Measured wattage or VA During first 30 s (W / VA)	Measured wattage or VA After 30 s (W / VA)	Protective Circuit, Regulator, or PTC Operated? Yes / No (Comment)	Resistive PIS? Yes/No	
--	--	--	--	--	--	

Supplementary Information:
 A combination of voltmeter, VA and ammeter IA may be used instead of a wattmeter.
 If a separate voltmeter and ammeter are used, the product of (VA x IA) is used to determine Resistive PIS classification.
 A Resistive PIS: (a) dissipates more than 15 W, measured after 30 s of normal operation, or (b) under single fault conditions has either a power exceeding 100 W measured immediately after the introduction of the fault if electronic circuits, regulators or PTC devices are used, or has an available power exceeding 15 W measured 30 s after introduction of the fault.

8.5.5	TABLE: High Pressure Lamp		N/A
Description	Values	Energy Source Classification	
Lamp type		—	
Manufacturer		—	
Cat no.		—	

EN 62368-1			
Clause	Requirement + Test	Result - Remark	Verdict
Pressure (cold) (MPa)..... :			MS_
Pressure (operating) (MPa)..... :			MS_
Operating time (minutes)..... :			—
Explosion method..... :			—
Max particle length escaping enclosure (mm) . :			MS_
Max particle length beyond 1 m (mm) :			MS_
Overall result :			
Supplementary information:			

B.2.5		TABLE: Input test						P
U (V)	I (A)	I rated (A)	P (W)	P rated (W)	Fuse No	I fuse (A)	Condition/status	
56 Vdc	0.64	1.16	35.84	--	--	--	Maximum normal load	
Supplementary information:								
Equipment may be have rated current or rated power or both. Both should be measured.								
Maximum Normal Load: 1-Port EPoC Rx is powered by an external power supply, and then a is connected in series with 1-Port EPoC Tx and output 30W from RJ45 port of 1-Port EPoC Tx.								

B.3		TABLE: Abnormal operating condition tests						P
Component No.	Abnormal Condition	Supply voltage, (V)	Test time (ms)	Fuse no.	Fuse current, (A)	T-couple	Temp. (°C)	Observation
Ambient temperature (°C)				See below.				—
Power source for EUT: Manufacturer, model/type, output rating . :				See appended table 4.1.2.				—
PoE output	Overload	56 Vdc	1:09	--	--	J type	refer to Table 5.4.1.4, 6.3.2, 9.0, B.2.6.	Max normal load at total 98W steady state. No hazardous. I/P: 2.0A
Supplementary information:								
Test table is provided to record abnormal and fault conditions for all applicable energy sources including Thermal burn injury. Column “Abnormal/Fault.” Specify if test condition by indicating “Abnormal” then the condition for a Clause B.3 test or “Single Fault” then the condition for Clause B.4.								

EN 62368-1			
Clause	Requirement + Test	Result - Remark	Verdict

B.4		TABLE: Fault condition tests						P
Ambient temperature (°C)		See below.						—
Power source for EUT: Manufacturer, model/type, output rating . :		See appended table 4.1.2.						—
Component No.	Fault Condition	Supply voltage, (V)	Test time (ms)	Fuse no.	Fuse current, (A)	T-couple	Temp. (°C)	Observation
PoE output	SC	56 Vdc	10 mins	--	--	--	--	Unit shut down, no hazard, all safeguards remained effective, Input current 0.001A
Supplementary information:								

EN 62368-1			
Clause	Requirement + Test	Result - Remark	Verdict

Annex M	TABLE: Batteries								N/A
The tests of Annex M are applicable only when appropriate battery data is not available									N/A
Is it possible to install the battery in a reverse polarity position?								No	N/A
	Non-rechargeable batteries			Rechargeable batteries					
	Discharging		Un-intentional charging	Charging		Discharging		Reversed charging	
	Meas. current	Manuf. Specs.		Meas. current	Manuf. Specs.	Meas. current	Manuf. Specs.	Meas. current	Manuf. Specs.
Max. current during fault condition	--	--	--	--	--	--	--	--	--
Max. current during fault condition	--	--	--	--	--	--	--	--	--
Test results:									Verdict
- Chemical leaks									N/A
- Explosion of the battery									N/A
- Emission of flame or expulsion of molten metal									N/A
- Electric strength tests of equipment after completion of tests									N/A
Supplementary information:									

Annex Q.1	TABLE: Circuits intended for interconnection with building wiring (LPS)						P
Note: Measured UOC (V) with all load circuits disconnected:							
Output Circuit	Components	U _{oc} (V)	I _{sc} (A)		S (VA)		
			Meas.	Limit	Meas.	Limit	
1-Port EPoC Tx	Normal	55.4	1.92	8	99.8	100	
1-Port EPoC Tx	Q3 SC	55.4	1.92	8	99.8	100	
1-Port EPoC Rx	Normal	56.1	1.84	8	99.8	100	
1-Port EPoC Rx	Q3 SC	56.1	1.84	8	99.8	100	
Supplementary Information: SC=Short circuit, OC=Open circuit							

T.2, T.3, T.4, T.5	TABLE: Steady force test	P
--------------------	--------------------------	---

EN 62368-1			
Clause	Requirement + Test	Result - Remark	Verdict

Part/Location	Material	Thickness (mm)	Force (N)	Test Duration (sec)	Observation
Enclosure / Top	Metal	1.0	250N	5	1)
Enclosure / side	Metal	1.0	250N	5	1)
Enclosure / rear	Metal	1.0	250N	5	1)

Supplementary information:

1) No cracking, class 3 energy sources did not become accessible and all safeguards remain effective, No indication of dielectric breakdown

T.6, T.9	TABLE: Impact tests	P
----------	---------------------	---

Part/Location	Material	Thickness (mm)	Vertical distance (mm)	Observation
Enclosure / Top	Metal	1.0	1000	1)
Enclosure / side	Metal	1.0	1000	1)
Enclosure / rear	Metal	1.0	1000	1)

Supplementary information:

T.7	TABLE: Drop tests	N/A
-----	-------------------	-----

Part/Location	Material	Thickness (mm)	Drop Height (mm)	Observation

Supplementary information:

T.8	TABLE: Stress relief test	NA
-----	---------------------------	----

Part/Location	Material	Thickness (mm)	Oven Temperature (°C)	Duration (h)	Observation

Supplementary information:

ATTACHMENT 1- National differences

IEC 62368-1B_ATTACHMENT																																								
Clause	Requirement + Test		Result - Remark	Verdict																																				
ATTACHMENT TO TEST REPORT IEC 62368-1 EUROPEAN GROUP DIFFERENCES AND NATIONAL DIFFERENCES (Audio/video, information and communication technology equipment - Part 1: Safety requirements)																																								
Differences according to..... : EN 62368-1:2014+A11:2017																																								
Attachment Form No..... : EU_GD_IEC62368_1B_II																																								
Attachment Originator : Nemko AS																																								
Master Attachment : Date 2017-09-22																																								
Copyright © 2017 IEC System for Conformity Testing and Certification of Electrical Equipment (IECEE), Geneva, Switzerland. All rights reserved.																																								
	CENELEC COMMON MODIFICATIONS (EN)			P																																				
	Clauses, subclauses, notes, tables, figures and annexes which are additional to those in IEC 62368-1:2014 are prefixed "Z".			P																																				
CONTENTS	Add the following annexes: Annex ZA (normative) Normative references to international publications with their corresponding European publications Annex ZB (normative) Special national conditions Annex ZC (informative) A-deviations Annex ZD (informative) IEC and CENELEC code designations for flexible cords			P																																				
	Delete all the "country" notes in the reference document (IEC 62368-1:2014) according to the following list: <table border="1" style="width: 100%; border-collapse: collapse;"> <tr> <td style="width: 15%;">0.2.1</td> <td style="width: 15%;">Note</td> <td style="width: 15%;">1</td> <td style="width: 15%;">Note 3</td> <td style="width: 15%;">4.1.15</td> <td style="width: 15%;">Note</td> </tr> <tr> <td>4.7.3</td> <td>Note 1 and 2</td> <td>5.2.2.2</td> <td>Note</td> <td>5.4.2.3.2.2 Table 13</td> <td>Note c</td> </tr> <tr> <td>5.4.2.3.2.4</td> <td>Note 1 and 3</td> <td>5.4.2.5</td> <td>Note 2</td> <td>5.4.5.1</td> <td>Note</td> </tr> <tr> <td>5.5.2.1</td> <td>Note</td> <td>5.5.6</td> <td>Note</td> <td>5.6.4.2.1</td> <td>Note 2 and 3</td> </tr> <tr> <td>5.7.5</td> <td>Note</td> <td>5.7.6.1</td> <td>Note 1 and 2</td> <td>10.2.1 Table 39</td> <td>Note 2, 3 and 4</td> </tr> <tr> <td>10.5.3</td> <td>Note 2</td> <td>10.6.2.1</td> <td>Note 3</td> <td>F.3.3.6</td> <td>Note 3</td> </tr> </table>			0.2.1	Note	1	Note 3	4.1.15	Note	4.7.3	Note 1 and 2	5.2.2.2	Note	5.4.2.3.2.2 Table 13	Note c	5.4.2.3.2.4	Note 1 and 3	5.4.2.5	Note 2	5.4.5.1	Note	5.5.2.1	Note	5.5.6	Note	5.6.4.2.1	Note 2 and 3	5.7.5	Note	5.7.6.1	Note 1 and 2	10.2.1 Table 39	Note 2, 3 and 4	10.5.3	Note 2	10.6.2.1	Note 3	F.3.3.6	Note 3	P
0.2.1	Note	1	Note 3	4.1.15	Note																																			
4.7.3	Note 1 and 2	5.2.2.2	Note	5.4.2.3.2.2 Table 13	Note c																																			
5.4.2.3.2.4	Note 1 and 3	5.4.2.5	Note 2	5.4.5.1	Note																																			
5.5.2.1	Note	5.5.6	Note	5.6.4.2.1	Note 2 and 3																																			
5.7.5	Note	5.7.6.1	Note 1 and 2	10.2.1 Table 39	Note 2, 3 and 4																																			
10.5.3	Note 2	10.6.2.1	Note 3	F.3.3.6	Note 3																																			
	For special national conditions, see Annex ZB.			P																																				
1	Add the following note: NOTE Z1 The use of certain substances in electrical and electronic equipment is restricted within the EU: see Directive 2011/65/EU.			P																																				

ATTACHMENT 1- National differences

IEC 62368-1B_ATTACHMENT			
Clause	Requirement + Test	Result - Remark	Verdict
4.Z1	<p>Add the following new subclause after 4.9:</p> <p>To protect against excessive current, short-circuits and earth faults in circuits connected to an a.c. mains, protective devices shall be included either as integral parts of the equipment or as parts of the building installation, subject to the following, a), b) and c):</p> <p>a) except as detailed in b) and c), protective devices necessary to comply with the requirements of B.3.1 and B.4 shall be included as parts of the equipment;</p> <p>b) for components in series with the mains input to the equipment such as the supply cord, appliance coupler, r.f.i. filter and switch, short-circuit and earth fault protection may be provided by protective devices in the building installation;</p> <p>c) it is permitted for pluggable equipment type B or permanently connected equipment, to rely on dedicated overcurrent and short-circuit protection in the building installation, provided that the means of protection, e.g. fuses or circuit breakers, is fully specified in the installation instructions.</p> <p>If reliance is placed on protection in the building installation, the installation instructions shall so state, except that for pluggable equipment type A the building installation shall be regarded as providing protection in accordance with the rating of the wall socket outlet.</p>		N/A
5.4.2.3.2.4	<p>Add the following to the end of this subclause:</p> <p>The requirement for interconnection with external circuit is in addition given in EN 50491-3:2009.</p>		N/A
10.2.1	<p>Add the following to ^{c)} and ^{d)} in table 39:</p> <p>For additional requirements, see 10.5.1.</p>		N/A

ATTACHMENT 1- National differences

IEC 62368-1B_ATTACHMENT			
Clause	Requirement + Test	Result - Remark	Verdict
10.5.1	<p>Add the following after the first paragraph: <i>For RS 1 compliance is checked by measurement under the following conditions:</i></p> <p><i>In addition to the normal operating conditions, all controls adjustable from the outside by hand, by any object such as a tool or a coin, and those internal adjustments or presets which are not locked in a reliable manner, are adjusted so as to give maximum radiation whilst maintaining an intelligible picture for 1 h, at the end of which the measurement is made.</i></p> <p>NOTE Z1 Soldered joints and paint lockings are examples of adequate locking.</p> <p><i>The dose-rate is determined by means of a radiation monitor with an effective area of 10 cm², at any point 10 cm from the outer surface of the apparatus.</i></p> <p><i>Moreover, the measurement shall be made under fault conditions causing an increase of the high-voltage, provided an intelligible picture is maintained for 1 h, at the end of which the measurement is made.</i></p> <p><i>For RS1, the dose-rate shall not exceed 1 μSv/h taking account of the background level.</i></p> <p>NOTE Z2 These values appear in Directive 96/29/Euratom of 13 May 1996.</p>		N/A
10.6.1	<p>Add the following paragraph to the end of the subclause: EN 71-1:2011, 4.20 and the related tests methods and measurement distances apply.</p>		N/A
10.Z1	<p>Add the following new subclause after 10.6.5. 10.Z1 Non-ionizing radiation from radio frequencies in the range 0 to 300 GHz</p> <p>The amount of non-ionizing radiation is regulated by European Council Recommendation 1999/519/EC of 12 July 1999 on the limitation of exposure of the general public to electromagnetic fields (0 Hz to 300 GHz).</p> <p>For intentional radiators, ICNIRP guidelines should be taken into account for Limiting Exposure to Time-Varying Electric, Magnetic, and Electromagnetic Fields (up to 300 GHz). For hand-held and body-mounted devices, attention is drawn to EN 50360 and EN 50566</p>		N/A
G.7.1	<p>Add the following note: NOTE Z1 The harmonized code designations corresponding to the IEC cord types are given in Annex ZD.</p>		N/A

ATTACHMENT 1- National differences

IEC 62368-1B_ATTACHMENT			
Clause	Requirement + Test	Result - Remark	Verdict
Bibliography	<p>Add the following standards:</p> <p>Add the following notes for the standards indicated:</p> <p>IEC 60130-9 NOTE Harmonized as EN 60130-9.</p> <p>IEC 60269-2 NOTE Harmonized as HD 60269-2.</p> <p>IEC 60309-1 NOTE Harmonized as EN 60309-1.</p> <p>IEC 60364 NOTE some parts harmonized in HD 384/HD 60364 series.</p> <p>IEC 60601-2-4 NOTE Harmonized as EN 60601-2-4.</p> <p>IEC 60664-5 NOTE Harmonized as EN 60664-5.</p> <p>IEC 61032:1997 NOTE Harmonized as EN 61032:1998 (not modified).</p> <p>IEC 61508-1 NOTE Harmonized as EN 61508-1.</p> <p>IEC 61558-2-1 NOTE Harmonized as EN 61558-2-1.</p> <p>IEC 61558-2-4 NOTE Harmonized as EN 61558-2-4.</p> <p>IEC 61558-2-6 NOTE Harmonized as EN 61558-2-6.</p> <p>IEC 61643-1 NOTE Harmonized as EN 61643-1.</p> <p>IEC 61643-21 NOTE Harmonized as EN 61643-21.</p> <p>IEC 61643-311 NOTE Harmonized as EN 61643-311.</p> <p>IEC 61643-321 NOTE Harmonized as EN 61643-321.</p> <p>IEC 61643-331 NOTE Harmonized as EN 61643-331.</p>		P
ZB	ANNEX ZB, SPECIAL NATIONAL CONDITIONS (EN)		
4.1.15	<p>Denmark, Finland, Norway and Sweden</p> <p>To the end of the subclause the following is added:</p> <p>Class I pluggable equipment type A intended for connection to other equipment or a network shall, if safety relies on connection to reliable earthing or if surge suppressors are connected between the network terminals and accessible parts, have a marking stating that the equipment shall be connected to an earthed mains socket-outlet.</p> <p>The marking text in the applicable countries shall be as follows:</p> <p>In Denmark: "Apparatets stikprop skal tilsluttes en stikkontakt med jord som giver forbindelse til stikproppens jord."</p> <p>In Finland: "Laite on liitettävä suojakoskettimilla varustettuun pistorasiaan"</p> <p>In Norway: "Apparatet må tilkoples jordet stikkontakt"</p> <p>In Sweden: "Apparaten skall anslutas till jordat uttag"</p>		N/A
4.7.3	<p>United Kingdom</p> <p>To the end of the subclause the following is added:</p> <p>The torque test is performed using a socket-outlet complying with BS 1363, and the plug part shall be assessed to the relevant clauses of BS 1363. Also see Annex G.4.2 of this annex</p>		N/A

ATTACHMENT 1- National differences

IEC 62368-1B_ATTACHMENT			
Clause	Requirement + Test	Result - Remark	Verdict
5.2.2.2	<p>Denmark</p> <p>After the 2nd paragraph add the following: A warning (marking safeguard) for high touch current is required if the touch current exceeds the limits of 3,5 mA a.c. or 10 mA d.c.</p>		N/A
5.4.11.1 and Annex G	<p>Finland and Sweden</p> <p>To the end of the subclause the following is added: For separation of the telecommunication network from earth the following is applicable: If this insulation is solid, including insulation forming part of a component, it shall at least consist of either</p> <ul style="list-style-type: none"> • two layers of thin sheet material, each of which shall pass the electric strength test below, or • one layer having a distance through insulation of at least 0,4 mm, which shall pass the electric strength test below. <p>If this insulation forms part of a semiconductor component (e.g. an optocoupler), there is no distance through insulation requirement for the insulation consisting of an insulating compound completely filling the casing, so that clearances and creepage distances do not exist, if the component passes the electric strength test in accordance with the compliance clause below and in addition</p> <ul style="list-style-type: none"> • passes the tests and inspection criteria of 5.4.8 with an electric strength test of 1,5 kV multiplied by 1,6 (the electric strength test of 5.4.9 shall be performed using 1,5 kV), and • is subject to routine testing for electric strength during manufacturing, using a test voltage of 1,5kV. <p>It is permitted to bridge this insulation with a capacitor complying with EN 60384-14:2005, subclass Y2.</p> <p>A capacitor classified Y3 according to EN 60384-14:2005, may bridge this insulation under the following conditions:</p> <ul style="list-style-type: none"> • the insulation requirements are satisfied by having a capacitor classified Y3 as defined by EN 60384-14, which in addition to the Y3 testing, is tested with an impulse test of 2,5 kV defined in 5.4.11; • the additional testing shall be performed on all the test specimens as described in EN 60384-14; <p>the impulse test of 2,5 kV is to be performed before the endurance test in EN 60384-14, in the sequence of tests as described in EN 60384-14.</p>		N/A

ATTACHMENT 1- National differences

IEC 62368-1B_ATTACHMENT			
Clause	Requirement + Test	Result - Remark	Verdict
5.5.2.1	<p>Norway</p> <p>After the 3rd paragraph the following is added: Due to the IT power system used, capacitors are required to be rated for the applicable line-to-line voltage (230 V).</p>		N/A
5.5.6	<p>Finland, Norway and Sweden</p> <p>To the end of the subclause the following is added: Resistors used as basic safeguard or bridging basic insulation in class I pluggable equipment type A shall comply with G.10.1 and the test of G.10.2.</p>		N/A
5.6.1	<p>Denmark</p> <p>Add to the end of the subclause</p> <p>Due to many existing installations where the socket-outlets can be protected with fuses with higher rating than the rating of the socket-outlets the protection for pluggable equipment type A shall be an integral part of the equipment.</p> <p><i>Justification:</i> In Denmark an existing 13 A socket outlet can be protected by a 20 A fuse.</p>		N/A
5.6.4.2.1	<p>Ireland and United Kingdom</p> <p>After the indent for pluggable equipment type A, the following is added: – the protective current rating is taken to be 13 A, this being the largest rating of fuse used in the mains plug.</p>		N/A
5.6.5.1	<p>To the second paragraph the following is added: The range of conductor sizes of flexible cords to be accepted by terminals for equipment with a rated current over 10 A and up to and including 13 A is: 1,25 mm² to 1,5 mm² in cross-sectional area.</p>		N/A
5.7.5	<p>Denmark</p> <p>To the end of the subclause the following is added: The installation instruction shall be affixed to the equipment if the protective conductor current exceeds the limits of 3,5 mA a.c. or 10 mA d.c.</p>		N/A

ATTACHMENT 1- National differences

IEC 62368-1B_ATTACHMENT			
Clause	Requirement + Test	Result - Remark	Verdict
5.7.6.1	<p>Norway and Sweden</p> <p>To the end of the subclause the following is added:</p> <p>The screen of the television distribution system is normally not earthed at the entrance of the building and there is normally no equipotential bonding system within the building. Therefore the protective earthing of the building installation needs to be isolated from the screen of a cable distribution system.</p> <p>It is however accepted to provide the insulation external to the equipment by an adapter or an interconnection cable with galvanic isolator, which may be provided by a retailer, for example.</p> <p>The user manual shall then have the following or similar information in Norwegian and Swedish language respectively, depending on in what country the equipment is intended to be used in:</p> <p>“Apparatus connected to the protective earthing of the building installation through the mains connection or through other apparatus with a connection to protective earthing – and to a television distribution system using coaxial cable, may in some circumstances create a fire hazard. Connection to a television distribution system therefore has to be provided through a device providing electrical isolation below a certain frequency range (galvanic isolator, see EN 60728-11)”</p> <p>NOTE In Norway, due to regulation for CATV-installations, and in Sweden, a galvanic isolator shall provide electrical insulation below 5 MHz. The insulation shall withstand a dielectric strength of 1,5 kV r.m.s., 50 Hz or 60 Hz, for 1 min.</p> <p>Translation to Norwegian (the Swedish text will also be accepted in Norway):</p> <p>“Apparater som er koplet til beskyttelsesjord via nettplugg og/eller via annet jordtilkøp utstyr – og er tilkøp et koaksialbasert kabel-TV nett, kan forårsake brannfare. For å unngå dette skal det ved tilkøp av apparater til kabel-TV nett installeres en galvanisk isolator mellom apparatet og kabel-TV nettet.”</p> <p>Translation to Swedish:</p> <p>”Apparater som är kopplad till skyddsjord via jordat vägguttag och/eller via annan utrustning och samtidigt är kopplad till kabel-TV nät kan i vissa fall medföra risk för brand. För att undvika detta skall vid anslutning av apparaten till kabel-TV nät galvanisk isolator finnas mellan apparaten och kabel-TV nätet.”.</p>		N/A

ATTACHMENT 1- National differences

IEC 62368-1B_ATTACHMENT			
Clause	Requirement + Test	Result - Remark	Verdict
5.7.6.2	<p>Denmark</p> <p>To the end of the subclause the following is added: The warning (marking safeguard) for high touch current is required if the touch current or the protective current exceed the limits of 3,5 mA .</p>		N/A
B.3.1 and B.4	<p>Ireland and United Kingdom</p> <p>The following is applicable: To protect against excessive currents and short-circuits in the primary circuit of direct plug-in equipment, tests according to Annexes B.3.1 and B.4 shall be conducted using an external miniature circuit breaker complying with EN 60898-1, Type B, rated 32A. If the equipment does not pass these tests, suitable protective devices shall be included as an integral part of the direct plug-in equipment, until the requirements of Annexes B.3.1 and B.4 are met</p>		N/A
G.4.2	<p>Denmark</p> <p>To the end of the subclause the following is added: Supply cords of single phase appliances having a rated current not exceeding 13 A shall be provided with a plug according to DS 60884-2-D1:2011. CLASS I EQUIPMENT provided with socket-outlets with earth contacts or which are intended to be used in locations where protection against indirect contact is required according to the wiring rules shall be provided with a plug in accordance with standard sheet DK 2-1a or DK 2-5a. If a single-phase equipment having a RATED CURRENT exceeding 13 A or if a poly-phase equipment is provided with a supply cord with a plug, this plug shall be in accordance with the standard sheets DK 6-1a in DS 60884-2-D1 or EN 60309-2. Mains socket outlets intended for providing power to Class II apparatus with a rated current of 2,5 A shall be in accordance DS 60884-2-D1:2011 standard sheet DKA 1-4a. Other current rating socket outlets shall be in compliance with Standard Sheet DKA 1-3a or DKA 1-1c. Mains socket-outlets with earth shall be in compliance with DS 60884-2-D1:2011 Standard Sheet DK 1-3a, DK 1-1c, DK1-1d, DK 1-5a or DK 1-7a <i>Justification:</i> Heavy Current Regulations, Section 6c</p>		N/A

ATTACHMENT 1- National differences

IEC 62368-1B_ATTACHMENT			
Clause	Requirement + Test	Result - Remark	Verdict
G.4.2	<p>United Kingdom</p> <p>To the end of the subclause the following is added: The plug part of direct plug-in equipment shall be assessed to BS 1363: Part 1, 12.1, 12.2, 12.3, 12.9, 12.11, 12.12, 12.13, 12.16, and 12.17, except that the test of 12.17 is performed at not less than 125 °C. Where the metal earth pin is replaced by an Insulated Shutter Opening Device (ISOD), the requirements of clauses 22.2 and 23 also apply.</p>		N/A
G.7.1	<p>United Kingdom</p> <p>To the first paragraph the following is added: Equipment which is fitted with a flexible cable or cord and is designed to be connected to a mains socket conforming to BS 1363 by means of that flexible cable or cord shall be fitted with a 'standard plug' in accordance with the Plugs and Sockets etc (Safety) Regulations 1994, Statutory Instrument 1994 No. 1768, unless exempted by those regulations.</p> <p>NOTE "Standard plug" is defined in SI 1768:1994 and essentially means an approved plug conforming to BS 1363 or an approved conversion plug.</p>		N/A
G.7.1	<p>Ireland</p> <p>To the first paragraph the following is added: Apparatus which is fitted with a flexible cable or cord shall be provided with a plug in accordance with Statutory Instrument 525: 1997, "13 A Plugs and Conversion Adapters for Domestic Use Regulations: 1997. S.I. 525 provides for the recognition of a standard of another Member State which is equivalent to the relevant Irish Standard</p>		N/A
G.7.2	<p>Ireland and United Kingdom</p> <p>To the first paragraph the following is added: A power supply cord with a conductor of 1,25 mm² is allowed for equipment which is rated over 10 A and up to and including 13 A.</p>		N/A

ATTACHMENT 1- National differences

IEC 62368-1B_ATTACHMENT			
Clause	Requirement + Test	Result - Remark	Verdict
ZC	ANNEX ZC, NATIONAL DEVIATIONS (EN)		
10.5.2	<p>Germany</p> <p>The following requirement applies: For the operation of any cathode ray tube intended for the display of visual images operating at an acceleration voltage exceeding 40 kV, authorization is required, or application of type approval (Bauartzulassung) and marking.</p> <p><i>Justification:</i> German ministerial decree against ionizing radiation (Röntgenverordnung), in force since 2002-07-01, implementing the European Directive 96/29/EURATOM.</p> <p>NOTE Contact address: Physikalisch-Technische Bundesanstalt, Bundesallee 100, D-38116 Braunschweig, Tel.: Int +49-531-592-6320, Internet: http://www.ptb.de</p>		N/A

ATTACHMENT 1- National differences

IEC 62368-1B_ATTACHMENT			
Clause	Requirement + Test	Result - Remark	Verdict

ATTACHMENT TO TEST REPORT			
IEC 62368-1 (AUSTRALIA / NEW ZEALAND) NATIONAL DIFFERENCES (Audio/video, information and communication technology equipment)			
Differences according to..... : AS/NZS 62368.1:2018			
Attachment Form No..... : AU_NZ_ND_IEC62368_1B			
Attachment Originator : JAS-ANZ			
Master Attachment : 2018-02			
Copyright © 2017 IEC System for Conformity Testing and Certification of Electrical Equipment (IECEE), Geneva, Switzerland. All rights reserved.			
	National Differences		P
Appendix ZZ	Variations to IEC 62368-1:2014 (ED. 2.0) for Australia and New Zealand		P
ZZ1 Scope	This Appendix lists the normative variations to IEC 62368-1:2014 (ED. 2.0)		P
ZZ2 Variations	The following modifications are required for Australian/New Zealand conditions:		P
2	Add the following to the list of normative references: The following normative documents are referenced in Appendix ZZ: -AS/NZS 3112, <i>Approval and test specification—Plugs and socket-outlets</i> -AS/NZS 3123, <i>Approval and test specification—Plugs, socket-outlets and couplers for general industrial application</i> -AS/NZS 3191, <i>Electric flexible cords</i> -AS/NZS 60065, <i>Audio, video and similar electronic apparatus—Safety requirements (IEC 60065:2015 (ED.8.0) MOD)</i> -AS/NZS 60320.1, <i>Appliance couplers for household and similar general purposes, Part 1: General requirements (IEC 60320-1, Ed.2.1 (2007) MOD)</i> -AS/NZS 60320.2.2, <i>Appliance couplers for household and similar general purposes Part 2.2: Interconnection couplers for household and similar equipment (IEC 60320-2-2, Ed.2.0 (1998) MOD)</i> -AS/NZS 60695.2.11, <i>Fire hazard testing, Part 2.11: Glowing/hot wire based test methods—Glow-wire flammability test method for end-products</i> -AS/NZS 60695.11.5, <i>Fire hazard testing, Part 11.5: Test flames—Needle-flame test method—Apparatus, confirmatory test arrangement and guidance</i> -AS/NZS 60695.11.10, <i>Fire hazard testing, Part 11.10: Test flames—50 W</i>		P

ATTACHMENT 1- National differences

IEC 62368-1B_ATTACHMENT			
Clause	Requirement + Test	Result - Remark	Verdict
	<p><i>horizontal and vertical flame test methods</i></p> <p>-AS/NZS 60884.1, <i>Plugs and socket-outlets for household and similar purposes, Part 1: General requirements</i></p> <p>-AS/NZS 60950.1:2015, <i>Information technology equipment—Safety, Part 1: General requirements (IEC 60950-1, Ed.2.2 (2013), MOD)</i></p> <p>IEC 61032:1997, <i>Protection of persons and equipment by enclosures—Probes for verification</i></p> <p>-AS/NZS 61558.1:2008 (including Amendment 2:2015), <i>Safety of Power Transformers, Power Supplies, Reactors and Similar Products, Part 1: General requirements and tests (IEC 61558-1 Ed 2.1, MOD)</i></p> <p>-AS/NZS 61558.2.16, <i>Safety of transformers, reactors, power supply units and similar products for voltages up to 1 100 V, Part 2.16: Particular requirements and tests for switch mode power supply units and transformers for switch mode power supply units.</i></p>		
4.1.1	<p>Application of requirements and acceptance of materials, components and subassemblies</p> <p>1 <i>Replace the text 'IEC 60950-1' with 'AS/NZS 60950.1:2015'.</i></p> <p>2 <i>Replace the text 'IEC 60065' with 'AS/NZS 60065'.</i></p>	Replaced.	P
4.7	Equipment for direct insertion into mains socket-outlets		N/A
4.7.2	<p>Requirements</p> <p><i>Delete the text of the second paragraph and replace with the following:</i></p> <p>Equipment with a plug portion, suitable for insertion into a 10 A 3-pin flat-pin socket-outlet complying with AS/NZS 3112 shall comply with the requirements in AS/NZS 3112 for equipment with integral pins for insertion into socket-outlets.</p>		N/A
4.7.3	<p>Compliance Criteria</p> <p><i>Delete the first paragraph and Note 1 and Note 2 and replace with the following:</i></p> <p><i>Compliance is checked by inspection and, if necessary, by the tests in AS/NZS 3112.</i></p>		N/A
4.8	<p><i>Delete existing clause title and replace with the following:</i></p> <p>4.8 Products containing coin/button cell batteries</p>		N/A

ATTACHMENT 1- National differences

IEC 62368-1B_ATTACHMENT					
Clause	Requirement + Test		Result - Remark	Verdict	
4.8.1	General 1 Second dashed point, <i>delete</i> the text and <i>replace</i> with the following: – include coin/button cell batteries with a diameter of 32 mm or less. 2 After the second dashed point, <i>insert</i> the following Note: NOTE 1: Batteries are specified in IEC 60086-2. 3 After the third dashed point, <i>renumber</i> the existing Note as 'NOTE 2'. 4 Fifth dashed point, <i>delete</i> the word 'lithium'.			N/A	
4.8.2	Instructional Safeguard First line, <i>delete</i> the word 'lithium'.			N/A	
4.8.3	Construction First line, after the word 'Equipment' <i>insert</i> the words 'containing one or more coin/button batteries and'			N/A	
4.8.5	Compliance criteria <i>Delete</i> the first paragraph and <i>replace</i> with the following: <i>Compliance is checked by applying a force of 30 N +/- 1 N for 10 s to the battery compartment door/cover by a rigid test finger according to test probe 11 of IEC 61032:1997 at the most unfavourable place and in the most unfavourable direction. The force shall be applied in one direction at a time.</i>			N/A	
5.4.10.2	Test methods			N/A	
5.4.10.2.1	General <i>Delete</i> the first paragraph and <i>replace</i> with the following: In Australia only, the separation is checked by the test of both Clause 5.4.10.2.2 and Clause 5.4.10.2.3. In New Zealand, the separation is checked by the test of either Clause 5.4.10.2.2 or Clause 5.4.10.2.3.			N/A	
Table 29	<i>Replace</i> the table with the following:			N/A	
Parts		Impulse test		Steady state test	
		New Zealand	Australia	New Zealand	Australia
Parts indicated in Clause 5.4.10.1 a) ^a		2.5 kV 10/700 μs	7.0 kV for hand-held telephones and headsets, 2.5 kV for other equipment. 10/700 μs	1.5 kV	3 kV
Parts indicated in Clause 5.4.10.1 b) and c) ^b		1.5 kV 10/700 μs ^c		1.0 kV	1.5 kV
^a Surge suppressors shall not be removed. ^b Surge suppressors may be removed, provided that such devices pass the impulse test of Clause 5.4.10.2.2 when tested as components outside the equipment. ^c During this test, it is allowed for a surge suppressor to operate and for a sparkover to occur in a GDT.					

ATTACHMENT 1- National differences

IEC 62368-1B_ATTACHMENT			
Clause	Requirement + Test	Result - Remark	Verdict
5.4.10.2.2	After the first paragraph, <i>insert</i> new Notes 201 and 202 as follows: NOTE 201 For Australia, the 7 kV impulse simulates lightning surges on typical rural and semi-rural network lines. NOTE 202 For Australia, the value of 2.5 kV for Clause 5.4.10.1 a) was chosen to ensure the adequacy of the insulation concerned and does not necessarily simulate likely overvoltages.		N/A
5.4.10.2.3	After the first paragraph, <i>insert</i> new Notes 201 and 202 as follows: NOTE 201 For Australia, where there are capacitors across the insulation under test, it is recommended that d.c. test voltages are used. NOTE 202 The 3 kV and 1.5 kV values for Australia have been determined considering the low frequency induced voltages from the power supply distribution system.		N/A
6	Electrically-caused fire		P
6.1	General After the first paragraph, <i>insert</i> the following new paragraph: Alternatively, the requirements of Clauses 6.2 to 6.5.2 are considered to be fulfilled if the equipment complies with the requirements of Clause 6.202	Add.	P
6.6	After Clause 6.6, <i>add</i> the new Clauses 6.201 and 6.202 as follows: 6.201 External power supplies, docking stations and other similar devices and 6.202 Resistance to fire—Alternative tests (see special national conditions)		N/A
8.5.4	Special categories of equipment comprising moving parts		N/A
8.5.4.1	Large data storage equipment In the first dashed row and the second dashed rows <i>replace</i> 'IEC 60950-1:2005' with 'AS/NZS 60950.1:2015'.		N/A
8.6	Stability of equipment		N/A

ATTACHMENT 1- National differences

IEC 62368-1B_ATTACHMENT			
Clause	Requirement + Test	Result - Remark	Verdict
8.6.1 and Table 36	<p>Requirements</p> <p>1. Table 36, <i>insert</i> Footnote c at the end of the 'Glass slide' heading, and <i>add</i> a new Footnote c after the text of Footnote b in the last row of Table 36 as follows:</p> <p>° The glass slide test is not applicable to floor standing equipment, even though the equipment may have controls or a display.</p> <p>2. Table 36, fifth row, <i>insert</i> ²⁰¹ at the end of 'No stability requirements'</p> <p>3. Table 36, ninth row, <i>insert</i> ²⁰¹ at the end of 'No stability requirements'</p> <p>4. Table 36, <i>add</i> the following new footnote: ²⁰¹ MS2 and MS3 television sets and display devices, designed only for fixing to a wall, ceiling or equipment rack, are not subjected to stability requirements only if the instructional safeguard of Clause 8.6.1.201 is provided. Otherwise, the glass slide requirements of Clause 8.6.4 and horizontal force requirements of Clause 8.6.5 apply.</p> <p>5. Second paragraph beneath Table 36, <i>delete</i> the words 'MS2 and MS3 television sets' and <i>replace</i> with 'MS2 and MS3 television sets and display devices'</p>		N/A
8.6.1	<p>After Clause 8.6.1 <i>add</i> the following new clauses: 8.6.1.201 Instructional safeguard for fixed-mount television sets (see special national conditions)</p>		N/A
Annex F Paragraph F.3.5.1	<p>Mains appliance outlet and socket-outlet markings <i>Replace</i> 'IEC 60320-2-2' with 'AS/NZS 60320.2.2'.</p>		N/A
Annex G Paragraph G.4.2	<p>Mains connectors</p> <p>1 In the second line <i>insert</i> 'or AS/NZS 3123' after 'IEC 60906-1'.</p> <p>2 In the second line <i>insert</i> 'or AS/NZS 60320 series' after 'IEC 60320 series'</p> <p>3 <i>Add</i> the following new paragraph: 10 A or 15 A 250 V flat pin plugs for the connection of equipment to mains-powered socket-outlets for household or similar general use shall comply with AS/NZS 3112 or AS/NZS 60884.1.</p>		N/A
Paragraph G.5.3.1	<p>Transformers, General</p> <p>1 In the third dashed point <i>replace</i> 'IEC 61558-1 and the relevant parts of IEC 61558-2' with 'AS/NZS 61558-1 and the relevant parts of AS/NZS 61558.2'</p> <p>2 In the fourth dashed point <i>replace</i> 'IEC 61558-2-16' with 'AS/NZS 61558.2.16'.</p>		N/A
Paragraph G.7.1	<p>Mains supply cords, General In the fourth dashed paragraph, <i>replace</i> 'IEC 60320-1' with 'AS/NZS 60320.1'</p>		N/A

ATTACHMENT 1- National differences

IEC 62368-1B_ATTACHMENT			
Clause	Requirement + Test	Result - Remark	Verdict
Table G.5	<p>Sizes of conductors</p> <p>1 In the second row, first column, <i>delete</i> '6' and <i>replace</i> with '7.5'</p> <p>2 In the second row, second column, <i>delete</i> '0,75' and <i>replace</i> with '0.75^b</p> <p>3 <i>Delete</i> Note 1.</p> <p>4 <i>Replace</i> 'NOTE 2' with 'NOTE:'.</p> <p>5 <i>Delete</i> the text of 'Footnote b' and <i>replace</i> with the following: ^b This nominal cross-sectional area is only allowed for Class II appliances if the length of the power supply cord, measured between the point where the cord, or cord guard, enters the appliance, and the entry to the plug does not exceed 2 m (0.5 mm² three-core supply flexible cords are not permitted; see AS/NZS 3191).</p> <p>6 In Footnote c <i>replace</i> 'IEC 60320-1' with 'AS/NZS 60320.1'</p> <p>7 In Footnote d <i>replace</i> 'IEC 60320-1' with 'AS/NZS 60320.1'</p>		N/A
Annex M Paragraph M.3.2	<p>Protection circuits for batteries provided within the equipment, Test method</p> <p>After the first dashed point <i>add</i> the following Note: NOTE 201: In cases where the voltage source is provided by power from an unassociated power source, consideration should be given to the effects of possible single fault conditions in the unassociated equipment. If the power source is unknown then it should be assumed that the maximum limit of SELV may be applied to the source input under assumed single fault conditions in the source when assessing the charging circuit in the equipment under test.</p>		N/A
	Special national conditions (if any)		P

ATTACHMENT 1- National differences

IEC 62368-1B_ATTACHMENT			
Clause	Requirement + Test	Result - Remark	Verdict
6.201	<p>External power supplies, docking stations and other similar devices For external power supplies, docking stations and other similar devices, during and after abnormal operating conditions and during single fault conditions the output voltage— – at all ES1 outlets or connectors shall not increase by more than 10% of its rated output voltage under normal operating condition; and – of a USB outlet or connector shall not increase by more than 3 V or 10% of its rated output voltage under normal operating conditions, whichever is higher. For equipment with multiple rated output voltages, the requirements apply with the equipment configured for each rated output voltage in turn. NOTE: This is intended to reduce the possibility of battery fire or explosion in attached equipment or accessories when charging secondary lithium batteries. <i>Compliance shall be checked by measurement, taking into account the abnormal operating conditions of Annex B.3 and the simulated single-fault conditions of Annex B.4</i></p>		P
6.202	<p>Resistance to fire—Alternative tests</p>		N/A
6.202.1	<p>General Parts of non-metallic material shall be resistant to ignition and spread of fire. This requirement does not apply to decorative trims, knobs and other parts unlikely to be ignited or to propagate flames from inside the equipment, or the following: a) Components that are contained in an enclosure having a flammability category of V-0 according to AS/NZS 60695.11.10 and having openings only for the connecting wires filling the openings completely, and for ventilation not exceeding 1 mm in width regardless of length. b) The following parts which would contribute negligible fuel to a fire: – small mechanical parts, the mass of which does not exceed 4 g, such as mounting parts, gears, cams, belts and bearings; – small electrical components, such as capacitors with a volume not exceeding 1 750 mm³, integrated circuits, transistors and optocoupler packages, if these components are mounted on material of flammability category V-1, or better, according to AS/NZS 60695.11.10. NOTE: In considering how to minimize propagation of fire and what 'small parts' are, account should be taken of the cumulative effect of small parts adjacent to each other for the possible effect of propagating the fire from one part to</p>	<p>Materials and components used in the construction of equipment that comply with the requirements of IEC 62368-1. All materials have suitable flame class, alternative test methods were not considered.</p>	N/A

ATTACHMENT 1- National differences

IEC 62368-1B_ATTACHMENT									
Clause	Requirement + Test	Result - Remark	Verdict						
	another.								
	<p><i>Compliance shall be checked by the tests of Clauses 6.202.2, 6.202.3 and 6.202.4.</i></p> <p>For the base material of printed boards, compliance shall be checked by the test of Clause 6.202.5.</p> <p>The tests shall be carried out on parts of non-metallic material which have been removed from the equipment. When the glow-wire test is carried out, the parts shall be placed in the same orientation as they would be in normal use.</p> <p>These tests are not carried out on internal wiring.</p>		N/A						
6.202.2	<p>Testing of non-metallic materials</p> <p>Parts of non-metallic material shall be subject to the glow-wire test of AS/NZS 60695.2.11 which shall be carried out at 550°C.</p> <p>Parts for which the glow-wire test cannot be carried out, such as those made of soft or foamy material, shall meet the requirements specified in ISO 9772 for category FH-3 material. The glow-wire test shall be not carried out on parts of material classified at least FH-3 according to ISO 9772 provided that the relevant part is not thinner than the sample tested.</p>		N/A						
6.202.3	<p>Testing of insulating materials</p> <p>Parts of insulating material supporting Potential Ignition Sources shall be subject to the glow-wire test of AS/NZS 60695.2.11 which shall be carried out at 750°C.</p> <p>The test shall be also carried out on other parts of insulating material which are within a distance of 3 mm of the connection.</p> <p>NOTE: Contacts in components such as switch contacts are considered to be connections</p>		N/A						
	<p>For parts which withstand the glow-wire test but produce a flame, other parts above the connection within the envelope of a vertical cylinder having a diameter of 20 mm and a height of 50 mm shall be subjected to the needle-flame test.</p> <p>However, parts shielded by a barrier which meets the needle-flame test need not be tested</p>		N/A						
	<p>The needle-flame test shall be made in accordance with AS/NZS 60695.11.5 with the following modifications:</p> <table border="1" data-bbox="359 1758 965 2074"> <tr> <td>Clause of AS/NZS 60695.11.5</td> <td>Change</td> </tr> <tr> <td>9 Test procedure</td> <td></td> </tr> <tr> <td>9.2 Application of needle-flame</td> <td>Delete the first and second paragraphs and <i>replace</i> with the following:</td> </tr> </table>	Clause of AS/NZS 60695.11.5	Change	9 Test procedure		9.2 Application of needle-flame	Delete the first and second paragraphs and <i>replace</i> with the following:		N/A
Clause of AS/NZS 60695.11.5	Change								
9 Test procedure									
9.2 Application of needle-flame	Delete the first and second paragraphs and <i>replace</i> with the following:								

ATTACHMENT 1- National differences

IEC 62368-1B_ATTACHMENT			
Clause	Requirement + Test	Result - Remark	Verdict
	<p>The specimen shall be arranged so that the flame can be applied to a vertical or horizontal edge as shown in the examples of Figure 1. If possible the flame shall be applied at least 10 mm from a corner.</p> <p>The duration of application of the test flame shall be 30 s <input type="checkbox"/> 1 s.</p>		
	<p>9.3 Number of test specimens</p>	<p><i>Replace with the following:</i> The test shall be made on one specimen. If the specimen does not withstand the test, the test may be repeated on two further specimens, both of which shall withstand the test.</p>	
	<p>11 Evaluation of test results</p>	<p><i>Replace with the following:</i> The duration of burning (tb) shall not exceed 30 s. However, for printed circuit boards, it shall not exceed 15 s.</p>	
	<p>The needle-flame test shall not be carried out on parts of material classified as V-0 or V-1 according to AS/NZS 60695.11.10, provided that the relevant part is not thinner than the sample tested.</p>		
6.202.4	<p>Testing in the event of non-extinguishing material</p> <p>If parts, other than enclosures, do not withstand the glow wire tests of Clause 6.202.3, by failure to extinguish within 30 s after the removal of the glowwire tip, the needle-flame test detailed in Clause 6.202.3 shall be made on all parts of non-metallic material which are within a distance of 50 mm or which are likely to be impinged upon by flame during the tests of Clause 6.202.3. Parts shielded by a separate barrier which meets the needle-flame test need not be tested.</p>		N/A

ATTACHMENT 1- National differences

IEC 62368-1B_ATTACHMENT			
Clause	Requirement + Test	Result - Remark	Verdict
	<p>NOTE 1: If the enclosure does not withstand the glow-wire test the equipment is considered to have failed to meet the requirements of Clause 6.202 without the need for consequential testing.</p> <p>NOTE 2: If other parts do not withstand the glow-wire test due to ignition of the tissue paper and if this indicates that burning or glowing particles can fall onto an external surface underneath the equipment, the equipment is considered to have failed to meet the requirements of Clause 6.202 without the need for consequential testing.</p> <p>NOTE 3: Parts likely to be impinged upon by the flame are considered to be those within the envelope of a vertical cylinder having a radius of 10 mm and a height equal to the height of the flame, positioned above the point of the material supporting, in contact with, or in close proximity to, connections.</p>		
6.202.5	<p>Testing of printed boards The base material of printed boards shall be subjected to the needle-flame test of Clause 6.202.3. The flame shall be applied to the edge of the board where the heat sink effect is lowest when the board is positioned as in normal use. The flame shall not be applied to an edge, consisting of broken perforations, unless the edge is less than 3 mm from a potential ignition source.</p> <p>The test is not carried out if— – the printed board does not carry any potential ignition source; – the base material of printed boards, on which the available apparent power at a connection exceeds 15 VA operating at a voltage exceeding 50 V and equal or less than 400 V (peak) a.c. or d.c. under normal operating conditions, is of flammability category V-1 or better according to AS/NZS 60695.11.10, or the printed boards are protected by an enclosure meeting the flammability category V-0 according to AS/NZS 60695.11.10, or made of metal, having openings only for connecting wires which fill the openings completely; or – the base material of printed boards, on which the available equipment power at a connection exceeds 15 VA operating at a voltage exceeding 400 V (peak) a.c. or d.c. under normal operating conditions, and base material of printed boards supporting spark gaps which provides protection against overvoltages, is of flammability category V-0 according to AS/NZS 60695.11.10 or the printed boards are contained in a metal enclosure, having openings only for connecting wires which fill the openings completely.</p> <p><i>Conformance shall be determined using the smallest thickness of the material.</i></p> <p>NOTE: Available apparent power is the maximum apparent power which can be drawn from the supplying circuit through a resistive load whose value is chosen to maximize the apparent power for more than 2 min when the circuit supplied is disconnected.</p>	For PCB material refer to appended table 4.1.2 of main test report.	N/A
6.202.6	<p>For open circuit voltages greater than 4 kV Potential ignition sources with open circuit</p>		N/A

ATTACHMENT 1- National differences

IEC 62368-1B_ATTACHMENT			
Clause	Requirement + Test	Result - Remark	Verdict
	voltages exceeding 4 kV (peak) a.c. or d.c. under normal operating conditions shall be contained in a FIRE ENCLOSURE which shall comply with flammability category V-1 or better according to AS/NZS 60695.11.10.		
8.6.1.201	<p>8.6.1.201 Instructional safeguard for fixed-mount television sets</p> <p>MS2 and MS3 television sets and display devices designed only for fixed mounting to a wall of ceiling or equipment rack shall, where required in Table 36, footnote 201, have an instructional safeguard in accordance with Clause F.5 which may be on the equipment or included in the installation instructions or equivalent document accompanying the equipment.</p> <p>The elements of the instructional safeguard shall be as follows:</p> <ul style="list-style-type: none"> – element 1a: not available; – element 2: ‘Stability Hazard’ or equivalent wording; – element 3: ‘The television set may fall, causing serious personal injury or death’ or equivalent text; – element 4: the following or equivalent text: To prevent injury, this television set must be securely attached to the floor/wall in accordance with the installation instructions 		N/A
8.6.1.202	<p>Restraining device</p> <p>MS2 and MS3 television sets and display devices that are not solely fixed-mounted should be provided with a restraining device such as a fixing point to facilitate restraining the equipment from toppling forward. The restraining device shall be capable of withstanding a pull of 100 N in all directions without damage.</p> <p>Where a restraining device is provided, instructions shall be provided in the instructions for installation or instructions for use to ensure correct and safe installation.</p>		N/A

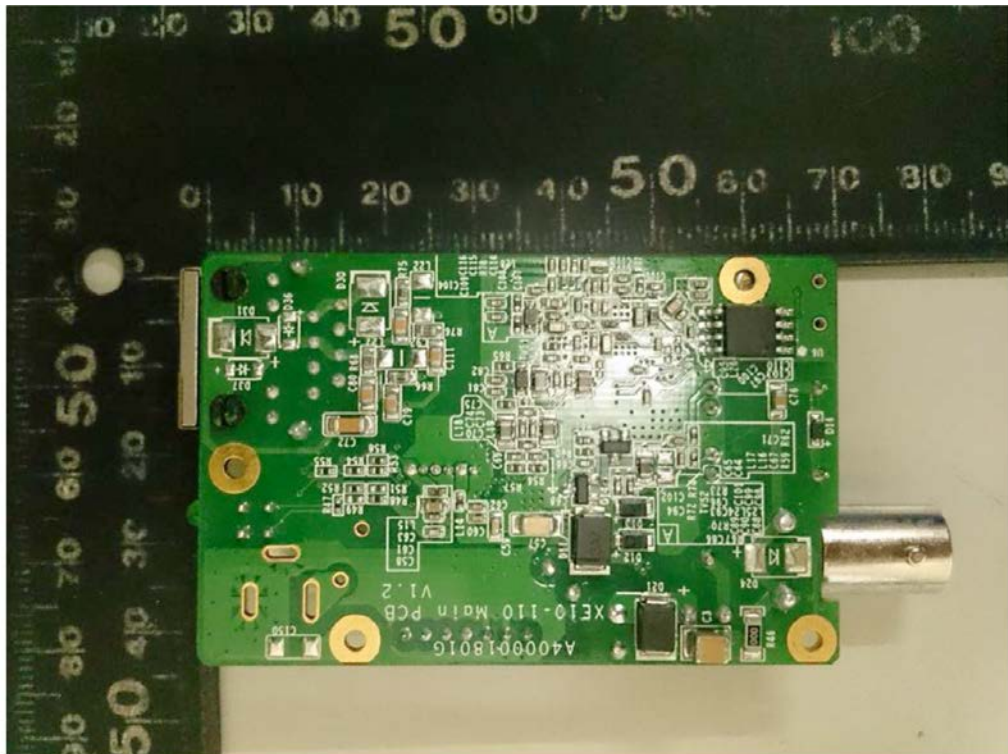
ATTACHMENT 2- Photographs



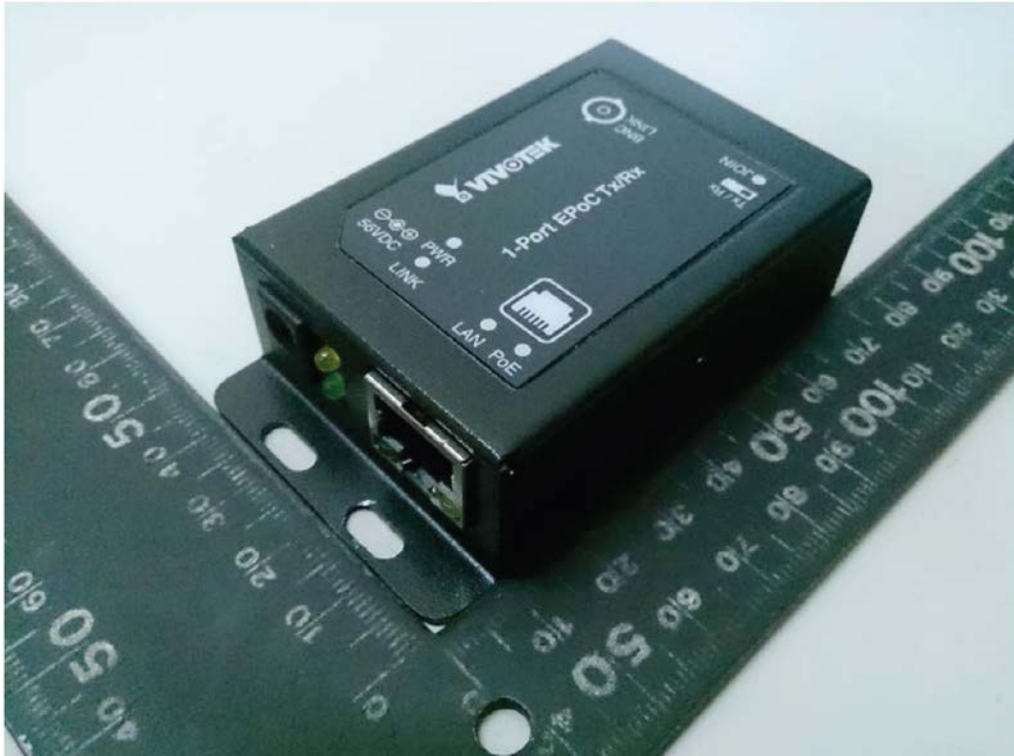
ATTACHMENT 2- Photographs



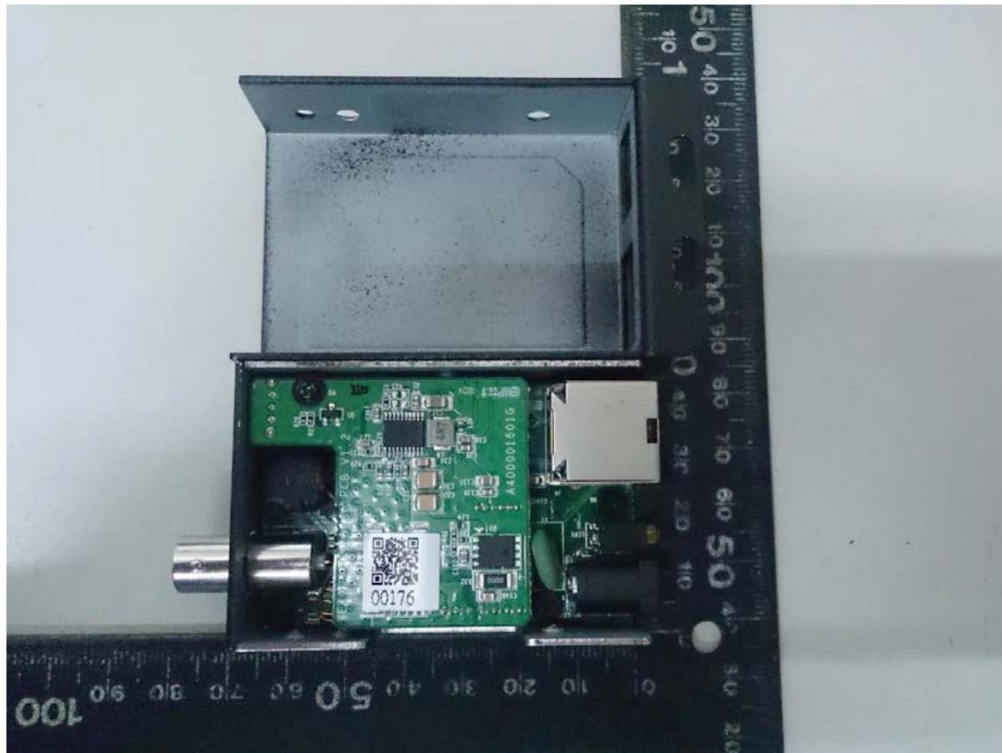
ATTACHMENT 2- Photographs



ATTACHMENT 2- Photographs



ATTACHMENT 2- Photographs



ATTACHMENT 2- Photographs

