



Test Report issued under the responsibility of:



TEST REPORT
IEC 60950-1
Information technology equipment – Safety –
Part 1: General requirements

Report Number..... : CB1291904067A
Date of issue..... : 2019-01-07, Amendment No 1: 2019-07-09
Total number of pages 17

Applicant's name : VIVOTEK INC.
Address..... : 6TH FL, 192 LIEN CHENG RD CHUNG HO DISTRICT NEW
TAIPEI, 235 TAIWAN

Test specification:

Standard : IEC 60950-1:2005 (Second Edition) + Am 1:2009 + Am 2:2013
Test procedure : CB Scheme
Non-standard test method : N/A

Test Report Form No. : IEC60950_1F
Test Report Form(s) Originator : SGS Fimko Ltd
Master TRF : Dated 2014-02

Copyright © 2014 IEC System of Conformity Assessment Schemes for Electrotechnical Equipment and Components (IECEE System). All rights reserved.




This publication may be reproduced in whole or in part for non-commercial purposes as long as the IECEE is acknowledged as copyright owner and source of the material. IECEE takes no responsibility for and will not assume liability for damages resulting from the reader's interpretation of the reproduced material due to its placement and context.

If this Test Report Form is used by non-IECEE members, the IECEE/IEC logo and the reference to the CB Scheme procedure shall be removed.

This report is not valid as a CB Test Report unless signed by an approved CB Testing Laboratory and appended to a CB Test Certificate issued by an NCB in accordance with IECEE 02.

General disclaimer:

The test results presented in this report relate only to the object tested.
This report shall not be reproduced, except in full, without the written approval of the Issuing CB Testing Laboratory. The authenticity of this Test Report and its contents can be verified by contacting the NCB, responsible for this Test Report.

Test item description :	Network Camera	
Trade Mark :		
Manufacturer	Same as applicant.	
Model/Type reference :	1) IB9387-EH 2) IB9387-H 3) IB9387-EHT 4) IB9387-HT and IB9387-LPR	
Ratings :	1) PoE 42.5-57 Vdc, 0.46-0.34 A ; DC 12 V, 1.25 A 2) PoE 37-57 Vdc, 0.22-0.14 A ; DC 12 V, 0.5 A 3) PoE 42.5 to 57 Vdc,0.55 to 0.41 A ; DC 12 V, 1.58 A 4) PoE 37 to 57 Vdc,0.33 to 0.21 A ; DC 12 V, 0.83 A	
Testing procedure and testing location:		
<input checked="" type="checkbox"/> CB Testing Laboratory:	Perfectlink International Corp.	
Testing location/ address	4F., No. 16-1, Sec. 2, Zhongyang S. Rd., Beitou Dist., Taipei City 112, Taiwan, Chinese Taipei	
<input type="checkbox"/> Associated CB Testing Laboratory:		
Testing location/ address		
Tested by (name + signature) :	Eason Wang, Project Handler	
Approved by (name + signature) :	Sprewell Chien, Reviewer	
<input type="checkbox"/> Testing procedure: TMP/CTF Stage 1:		
Testing location/ address		
Tested by (name + signature) :		
Approved by (name + signature) :		
<input type="checkbox"/> Testing procedure: WMT/CTF Stage 2:		
Testing location/ address		
Tested by (name + signature) :		
Witnessed by (name + signature)		
Approved by (name + signature) :		
<input type="checkbox"/> Testing procedure: SMT/CTF Stage 3 or 4:		
Testing location/ address		
Tested by (name + signature) :		
Witnessed by (name + signature)		
Approved by (name + signature) :		

Supervised by (name + signature)..... :		

List of Attachments (including a total number of pages in each attachment):

- Photo Documentation (4 pages)
- IEC 60950-22 test report (27 pages)

Total number of pages in each attachment is indicated in each individual attachment.

Summary of testing:**Tests performed (name of test and test clause):**

- 1.6.2 - Input test - single-phase
- 4.2.1-4.2.4 - Steady force tests
- 4.2.5, 4.2.1, Part 22 10.2 - Impact test
- 4.2.7, 4.2.1 - Stress relief test
- 4.2.10 - Loading tests - wall and ceiling mounted equipment
- 4.5.1, 1.4.12, 1.4.13 - Heating test
- 4.6.5 - Barrier adhesive test
- 5.3.1, 5.3.4, 5.3.7 - Component failure test
- All applicable tests as described in Test Case were performed.
- Specified maximum ambient temperature is:
**50 °C for models IB9387-EH and IB9387-H;
55 °C for models IB9387-EHT, IB9387-HT and IB9387-LPR**
- The highest load condition used as below during testing:
For models IB9387-H, IB9387-HT and IB9387-LPR:
EUT was operated continuously with data-link mode and IR LED function is forced to enable
For models IB9387-EH and IB9387-EHT:
EUT was operated continuously with data-link mode and IR LED / Heaters function is forced to enable
- The test samples were pre-production sample without serial numbers.
- If no specify state, all testing are performed on models **IB9387-EH and IB9387-EHT** as representative.

Testing location:

All tests as described in Test Case were performed at the laboratory described on page 2.

Summary of compliance with National Differences:

List of countries addressed (for IEC 60950-1:2005+A1:2009+A2:2013):

EU Group Differences, EU Special National Conditions, CA, US, AU, JP

Explanation of used codes: CA=Canada, US=United States of America, AU=Australia, JP=Japan.

The product fulfils the requirements of EN 60950-1:2006+A11:2009+A1:2010+A12:2011+A2:2013

List of countries addressed (for IEC 60950-1:2005+A1:2009):

EU Group Differences, EU Special National Conditions, CA, FI, DE, IL, KR, SE, GB, US

Explanation of used codes: CA=Canada, FI=Finland, DE=Germany, IL=Israel, KR=Korea, SE=Sweden, GB=United Kingdom, US=United States of America.

The product fulfils the requirements of EN 60950-1:2006 + A11:2009 + A1:2010+A12:2011

List of countries addressed (for IEC 60950-1:2005):

EU Group Differences, EU Special National Conditions, EU A-Deviations, AU, CA, CN, DK, FI, DE, IE, IL, KR, NO, ES, SE, CH, GB, US.

Explanation of used codes: AU=Australia, CA=Canada, CN=China, DK=Denmark, FI=Finland, DE=Germany, IE=Ireland, IL=Israel, KR=Korea, NO=Norway, ES=Spain, SE=Sweden, CH=Switzerland, GB=United Kingdom, US=United States of America.

The product fulfils the requirements of EN 60950-1:2006 + A11:2009

List of countries addressed (for IEC 60950-1:2001):

EU Group Differences, EU Special National Conditions, EU A-Deviations, AU, CA, DK, FI, DE, JP, KR, NO, SE, CH, GB, US.

Explanation of used codes: AU=Australia, CA=Canada, DK=Denmark, FI=Finland, DE=Germany, JP=Japan, KR=Korea, NO=Norway, SE=Sweden, CH=Switzerland, GB=United Kingdom, US=United States of America.

The product fulfils the requirements of EN 60950-1:2001 + A11:2004

The product fulfils the requirements of EN 60950-22:2017

see separate report according to IEC/EN 60950-22 in attachment for details

Copy of marking plate:

The artwork below may be only a draft. The use of certification marks on a product must be authorized by the respective NCBs that own these marks.

(Representative)

<p>IB9387-H Network Camera</p> <p>VIVOTEK</p> <p>MAC:0002D1XXXXXX</p>  <p>12V --- 0.5A PoE 37-57V --- 0.22-0.14A</p>    <p>RoHS</p> <p>This device complies with Part 15 of the FCC Rules. Operation is subject to the following two conditions: (1) this device may not cause harmful interference, and (2) this device must accept any interference received, including interference that may cause undesired operation.</p> <p>6F, No. 192, Lien-Cheng Rd., Chung-Ho, New Taipei City, 235, Taiwan, R.O.C. Pat.6, 930, 709 www.vivotek.com Made in Taiwan</p>	<p>IB9387-EH Network Camera</p> <p>VIVOTEK</p> <p>MAC:0002D1XXXXXX</p>  <p>12V --- 1.25A PoE 42.5-57V --- 0.46-0.34A</p>    <p>RoHS</p> <p>This device complies with Part 15 of the FCC Rules. Operation is subject to the following two conditions: (1) this device may not cause harmful interference, and (2) this device must accept any interference received, including interference that may cause undesired operation.</p> <p>6F, No. 192, Lien-Cheng Rd., Chung-Ho, New Taipei City, 235, Taiwan, R.O.C. Pat.6, 930, 709 www.vivotek.com Made in Taiwan</p>
<p>IB9387-EHT Network Camera</p> <p>VIVOTEK</p> <p>MAC:0002D1XXXXXX</p>  <p>12V --- 1.58A PoE 42.5-57V --- 0.55-0.41A</p>    <p>RoHS</p> <p>This device complies with Part 15 of the FCC Rules. Operation is subject to the following two conditions: (1) this device may not cause harmful interference, and (2) this device must accept any interference received, including interference that may cause undesired operation.</p> <p>6F, No. 192, Lien-Cheng Rd., Chung-Ho, New Taipei City, 235, Taiwan, R.O.C. Pat.6, 930, 709 www.vivotek.com Made in Taiwan</p>	<p>IB9387-HT Network Camera</p> <p>VIVOTEK</p> <p>MAC:0002D1XXXXXX</p>  <p>12V --- 0.83A PoE 37-57V --- 0.33-0.21A</p>    <p>RoHS</p> <p>This device complies with Part 15 of the FCC Rules. Operation is subject to the following two conditions: (1) this device may not cause harmful interference, and (2) this device must accept any interference received, including interference that may cause undesired operation.</p> <p>6F, No. 192, Lien-Cheng Rd., Chung-Ho, New Taipei City, 235, Taiwan, R.O.C. Pat.6, 930, 709 www.vivotek.com Made in Taiwan</p>
<p>IB9387-LPR Network Camera</p> <p>VIVOTEK</p> <p>MAC:0002D1XXXXXX</p>  <p>12V --- 0.83A PoE 37-57V --- 0.33-0.21A</p>    <p>RoHS</p> <p>This device complies with Part 15 of the FCC Rules. Operation is subject to the following two conditions: (1) this device may not cause harmful interference, and (2) this device must accept any interference received, including interference that may cause undesired operation.</p> <p>6F, No. 192, Lien-Cheng Rd., Chung-Ho, New Taipei City, 235, Taiwan, R.O.C. Pat.6, 930, 709 www.vivotek.com Made in Taiwan</p>	

The warning caution "Use only power supplies listed in the user instructions" or "For applicable power supplies see user instructions" shall be marked on the outer enclosure of the product by suitable regional language, and it must be legible and durable.

Test item particulars	
Equipment mobility.....	<input type="checkbox"/> movable <input type="checkbox"/> hand-held <input type="checkbox"/> transportable <input checked="" type="checkbox"/> stationary <input type="checkbox"/> for building-in <input type="checkbox"/> direct plug-in
Connection to the mains.....	<input type="checkbox"/> pluggable equipment <input type="checkbox"/> type A <input type="checkbox"/> type B <input type="checkbox"/> permanent connection <input type="checkbox"/> detachable power supply cord <input type="checkbox"/> non-detachable power supply cord <input checked="" type="checkbox"/> not directly connected to the mains
Operating condition.....	<input checked="" type="checkbox"/> continuous <input type="checkbox"/> rated operating / resting time:
Access location	<input checked="" type="checkbox"/> operator accessible <input type="checkbox"/> restricted access location
Over voltage category (OVC)	<input type="checkbox"/> OVC I <input type="checkbox"/> OVC II <input type="checkbox"/> OVC III <input type="checkbox"/> OVC IV <input checked="" type="checkbox"/> other: Not directly connected to the mains
Mains supply tolerance (%) or absolute mains supply values	Not directly connected to the mains
Tested for IT power systems	<input type="checkbox"/> Yes <input checked="" type="checkbox"/> No
IT testing, phase-phase voltage (V)	N/A
Class of equipment	<input type="checkbox"/> Class I <input type="checkbox"/> Class II <input checked="" type="checkbox"/> Class III <input type="checkbox"/> Not classified
Considered current rating of protective device as part of the building installation (A)	N/A
Pollution degree (PD)	<input type="checkbox"/> PD 1 <input checked="" type="checkbox"/> PD 2 <input type="checkbox"/> PD 3
IP protection class	IPX0
Altitude during operation (m)	Up to 2000 m
Altitude of test laboratory (m)	Up to 2000 m
Mass of equipment (kg)	Approx. 1.17 for models IB9387-EH and IB9387-H Approx. 1.27 for models IB9387-EHT, IB9387-HT and IB9387-LPR

Possible test case verdicts:	
- test case does not apply to the test object.....	N/A
- test object does meet the requirement	P (Pass)
- test object does not meet the requirement.....	F (Fail)
Testing.....	
Date of receipt of test item	2019-04-16
Date (s) of performance of tests.....	2019-04-25 to 2019-05-24
General remarks:	

"(See Enclosure #)" refers to additional information appended to the report.
 "(See appended table)" refers to a table appended to the report.

Throughout this report a comma / point is used as the decimal separator.

Manufacturer's Declaration per sub-clause 4.2.5 of IEC60950:

The application for obtaining a CB Test Certificate includes more than one factory location and a declaration from the Manufacturer stating that the sample(s) submitted for evaluation is (are) representative of the products from each factory has been provided

- Yes
- Not applicable

When differences exist; they shall be identified in the General product information section.

Name and address of factory (ies) : VIVOTEK INC.
 5F, No.168, Lien-Cheng Rd., Chung-Ho, New Taipei City, 235, Taiwan, R.O.C.

General product information:

The equipment, models IB9387-EH, IB9387-H, **IB9387-EHT, IB9387-HT and IB9387-LPR**, is a Network Camera for use in information technology equipment.

The product consists of electronic components are mounted on PCB and housed by metal enclosures and secured plastic cover together with glue. Unit must be mounted on a wall or ceiling.

Model differences:

All models are similar except for model designation, input ratings, heater, front cover, Lens module, IR LED board and relevant circuit and PCB layout.

See below table and photo documentation in attachment for details.

Model	IB9387-EH	IB9387-H	
Input Rating	PoE 42.5-57 Vdc, 0.46-0.34 A or DC 12 V, 1.25 A	PoE 37-57 Vdc, 0.22-0.14 A or DC 12 V, 0.5 A	
Heater	With	Without	
Tma	50		
IR LED board	Type 1		
Front cover	Type 1		
Lens module	Type 1		
Model	IB9387-EHT	IB9387-LPR	IB9387-HT
Input Rating	PoE 42.5-57 Vdc, 0.55-0.41 A or DC 12 V, 1.58 A	PoE 37-57 Vdc, 0.33-0.21 A or DC 12 V, 0.83 A	
Heater	With	Without	
Tma	55		
IR LED board	Type 2		
Front cover	Type 2		
Lens module	Type 2		

Other comments:

The equipment is power supplied from the external power adaptor or Power-over-Ethernet (PoE) device (only can receive one power source at time) which is complied with the requirement of Limited Power Source. Otherwise, the adaptor which is intended to be used with this equipment in the regional market should be stated in the specified manufacturer and models in the instruction by suitable regional languages.

The warning caution "Use only power supplies listed in the user instructions" or "For applicable power supplies see user instructions" shall be marked on the outer enclosure of the product by suitable regional language, and it must be legible and durable.

PoE circuits are considered as SELV circuits, the function of the ITE being investigated to IEC 60950-1 is considered not connection to an Ethernet Network with outside plant routing, including campus environment; and the installation instruction clearly states that the ITE is to be connected only to PoE networks without routing to the outside plant.

The product was submitted and tested for use at the maximum ambient temperature (T_{ma}) permitted by the manufacturer's specification of:

50 °C for models IB9387-EH and IB9387-H;

55 °C for models IB9387-EHT, IB9387-HT and IB9387-LPR

This label drawing is a draft of an artwork for marking plates pending approval by National Certification Bodies and it shall not be affixed to products prior to such an approval.

The product was investigated to the following additional standards: EN 60950-1:2006 + A11:2009 + A1:2010 + A12:2011+ A2:2013 (which includes all European national differences, including those specified in this test report).

The heater located on the main board and around the lens module for model IB9387-EH only

Based on Manufacturer's declaration, the equipment including LEDs was evaluated and considered as Exempt Group LED in accordance with IEC 62471.

This test report is evaluated in accordance with IEC/EN 60950-1 only. Based on client's declaration, the equipment is also evaluated in accordance with IEC 60950-22. See attachment for details.

Description of changes due to technical modification (s):

1. Add three models (IB9387-EHT, IB9387-HT and IB9387-LPR) with new front cover, IR LED board and Lens module.
2. Add two input ratings for new models used.
3. Add one Tma for new models used.

For the above described changes, the following was considered to be necessary:

Modification	Testing	Comments
1, 2, 3	1.6.2 - Input test - single-phase 4.2.1-4.2.4 - Steady force tests 4.2.5, 4.2.1, Part 22 10.2 - Impact test 4.2.7, 4.2.1 - Stress relief test 4.2.10 - Loading tests - wall and ceiling mounted equipment 4.5.1, 1.4.12, 1.4.13 - Heating test 4.6.5 - Barrier adhesive test 5.3.1, 5.3.4, 5.3.7 - Component failure test	Only limited test was conducted. See bold parts in sub-clause 4.2.4, 4.2.5, 4.2.7, 4.2.10, 4.6.5, appended table 1.5.1, 1.6.2, 4.5, 5.3 and photo documentation in attachment for details.

History of amendments and modifications:

Amendment No.	Certificate No. / Issue date	Test Report No. / Issue date	Type of changes
--	DK-79872-UL / 2019-01-10	CB1291810064A / 2019-01-07	Original report

Abbreviations used in the report:

- normal conditions	N.C.	- single fault conditions	S.F.C
- functional insulation	OP	- basic insulation	BI
- double insulation	DI	- supplementary insulation	SI
- between parts of opposite polarity	BOP	- reinforced insulation	RI

Indicate used abbreviations (if any)

IEC 60950-1			
Clause	Requirement + Test	Result - Remark	Verdict
4.2.4	Steady force test, 250 N	250 N applied to outer enclosure. No energy or other hazards.	P
4.2.5	Impact test	No hazard as result from steel ball impact test.	P
	Fall test	Same as above.	P
	Swing test	Same as above.	P
4.2.7	Stress relief test	92 °C, 7 h.	P
4.2.10	Wall or ceiling mounted equipment; force (N) . :	Force applied: 50 N.	P
4.6.5	Adhesives for constructional purposes	See below.	P
	Conditioning temperature (°C), time (weeks)...:	100 °C for one week	—

IEC 60950-1					
Clause	Requirement + Test			Result - Remark	Verdict
1.5.1	TABLE: List of critical components				P
Object/part No.	Manufacturer/ trademark	Type/model	Technical data	Standard (Edition / year)	Mark(s) of conformity ¹)
External Power Adaptor (For model IB9387-EHT used only) (Optional)	Interchangeable	Interchangeable	O/P: 12 Vdc, 1.58 A minimum or 42.5-57 Vdc, 0.55-0.41 A, 55 °C minimum, LPS	IEC 60950-1:2005+A1:2009+A2:2013	CB (issued by National Certification Body)
External Power Adaptor (For model IB9387-HT and IB9387-LPR used only) (Optional)	Interchangeable	Interchangeable	O/P: 12 Vdc, 0.83 A minimum or 37-57 Vdc, 0.33-0.21 A, 55 °C minimum, LPS	IEC 60950-1:2005+A1:2009+A2:2013	CB (issued by National Certification Body)
Enclosure (For models IB9387-EHT, IB9387-HT and IB9387-LPR used only)	--	--	--	--	--
- Front lens cover (Center)	TEIJIN LIMITED RESIN AND PLASTIC	L-1225Z(#1)(f1)	HB minimum, 1.5 mm thickness minimum, 115 degree C minimum.	ANSI/UL 746, ANSI/UL 94	UL (E50075)
Front lens cover (Middle frame)	SABIC INNOVATIVE PLASTICS B V	940(f1)	HB minimum, 1.5 mm thickness minimum, 120 degree C minimum.	ANSI/UL 746, ANSI/UL 94	UL (E45329)
Front lens cover (Outer)	SABIC JAPAN L L C	143R(f1)	HB minimum, 3.0 mm thickness minimum, 130 degree C minimum.	ANSI/UL 746, ANSI/UL 94	UL (E45587)
- Glue for front lens cover	CEMEDINE	SUPER X NO.8008	--	--	--
- Front and body metal enclosure	Interchangeable	Interchangeable	Aluminium alloy, 3.6 mm thickness min.	--	--

IEC 60950-1					
Clause	Requirement + Test			Result - Remark	Verdict
IR LED (LD1, LD5) (For models IB9387-EHT, IB9387-HT and IB9387-LPR used only) (2 provided)	Lextar Electronics Corporation	PR88F03	Wavelength 850 nm	IEC 62471:2006	Tested in appliance (Test report issued by UL)
(LD2, LD3) (For models IB9387-EHT, IB9387-HT and IB9387-LPR used only) (2 provided)	Lextar Electronics Corporation	PR35F0A	Wavelength 850 nm	IEC 62471:2006	Tested in appliance (Test report issued by UL)
(LD4, LD6) (For models IB9387-EHT, IB9387-HT and IB9387-LPR used only) (2 provided)	Lextar Electronics Corporation	PR35F0B	Wavelength 850 nm	IEC 62471:2006	Tested in appliance (Test report issued by UL)
Supplementary information: ¹⁾ Provided evidence ensures the agreed level of compliance. See OD-CB2039.					

1.5.1	TABLE: Opto Electronic Devices	N/A
Manufacturer : Type : Separately tested : Bridging insulation : External creepage distance : Internal creepage distance : Distance through insulation : Tested under the following conditions : Input : Output : supplementary information		

IEC 60950-1			
Clause	Requirement + Test	Result - Remark	Verdict

1.6.2	TABLE: Electrical data (in normal conditions)						P
U (V)	I (A)	I _{rated} (A)	P (W)	Fuse #	I _{fuse} (A)	Condition/status	
Test model IB9387-EHT							
PoE 42.5 Vdc	0.44	0.55	18.70	--	--	Maximum normal load. ²⁾	
PoE 57 Vdc	0.32	0.41	18.24	--	--	Maximum normal load. ²⁾	
DC 12 V	1.22	1.58	14.64	--	--	Maximum normal load. ²⁾	
Test model IB9387-LPR							
PoE 37 Vdc	0.17	0.33	6.29	--	--	Maximum normal load.	
PoE 57 Vdc	0.10	0.21	5.70	--	--	Maximum normal load.	
DC 12 V	0.38	0.83	4.56	--	--	Maximum normal load.	
Supplementary information: Maximum normal load: 1) EUT was operated continuously with data-link mode and IR LED function is forced to enable. 2) EUT was operated continuously with data-link mode and IR LED/Heaters function are forced to enable.							

4.5	TABLE: Thermal requirements					P
	Supply voltage (V)	See below	See below	See below	See below	—
	Ambient T _{min} (°C)	--	--	--	--	—
	Ambient T _{max} (°C)	--	--	--	--	—
	Maximum measured temperature T of part/at.....:	T (°C)				Allowed T _{max} (°C)
Test model: IB9387-EHT						
	Supply voltage	PoE 57 Vdc	PoE 57 Vdc	PoE 42.5 Vdc	DC 12 V	--
	Test condition	Horizontal	Vertical	Vertical	Vertical	--
	Super Cap body (Main board)	86.5	86.5	86.1	80.5	--
	PWB near U12 (Main board)	87.6	87.5	87.1	81.6	105
	PWB near U3 and U26 (Main board)	85.3	85.1	84.7	78.7	105
	T1 coil (I/O board)	90.8	91.0	89.1	72.1	105
	T1 core (I/O board)	86.0	87.0	85.6	70.9	105
	T2 coil (I/O board)	79.6	79.9	79.4	70.5	105
	C7 body (I/O board)	84.6	85.5	84.5	71.2	105
	Lens cover inside near Center cover	64.9	66.0	65.7	64.9	--

IEC 60950-1							
Clause	Requirement + Test			Result - Remark			Verdict
Lens cover inside near Outer cover	80.2	81.3	80.9	79.5	--		
Lens cover outside near Center cover	60.8	62.4	61.8	61.9	95		
Lens cover outside near Outer cover	66.3	68.8	67.7	67.1	95		
Metal enclosure outside near T1	64.8	64.5	64.2	62.4	70		
Label	64.4	64.3	63.7	62.0	--		
Tma	55.0	55.0	55.0	55.0	--		
Tamb	22.6	22.6	22.6	22.8	--		
Test model: IB9387-LPR							
Supply voltage	PoE 37 Vdc	--	--	--	--		
Test condition	Vertical	--	--	--	--		
Super Cap body (Main board)	86.5	--	--	--	--		
PWB near U12 (Main board)	87.5	--	--	--	105		
PWB near U3 and U26 (Main board)	85.1	--	--	--	105		
T1 coil (I/O board)	89.4	--	--	--	105		
T1 core (I/O board)	85.9	--	--	--	105		
T2 coil (I/O board)	80.0	--	--	--	105		
C7 body (I/O board)	84.9	--	--	--	105		
Lens cover inside near Center cover	66.0	--	--	--	--		
Lens cover inside near Outer cover	81.4	--	--	--	--		
Lens cover outside near Center cover	62.2	--	--	--	95		
Lens cover outside near Outer cover	68.2	--	--	--	95		
Metal enclosure outside near T1	64.6	--	--	--	70		
Label	64.6	--	--	--	--		
Tma	55.0	--	--	--	--		
Tamb	22.6	--	--	--	--		
Supplementary information:							
Temperature T of winding:	t ₁ (°C)	R ₁ (Ω)	t ₂ (°C)	R ₂ (Ω)	T (°C)	Allowed T _{max} (°C)	Insulation class
--	--	--	--	--	--	--	--

IEC 60950-1			
Clause	Requirement + Test	Result - Remark	Verdict

Supplementary information:

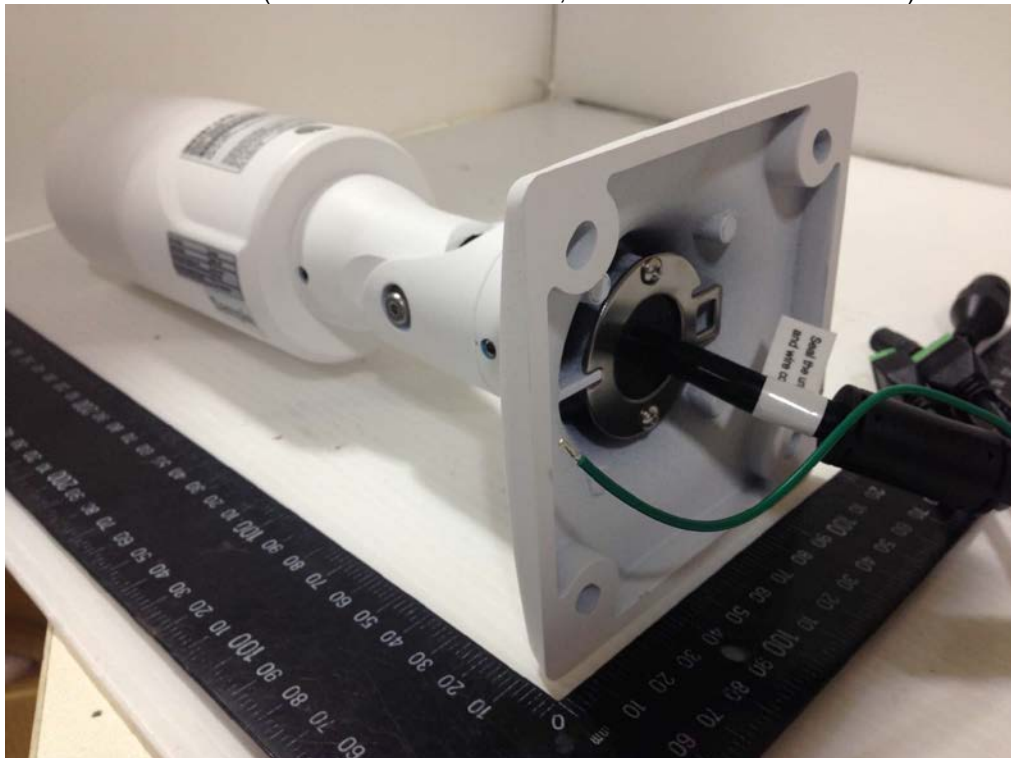
- 1) The temperatures were measured under worst case normal mode defined as below:
EUT was operated continuously with data-link mode and IR LED function is forced to enable.
- 2) The maximum ambient temperature (T_{ma}) permitted by the manufacturer's specification is:
50 °C for models IB9387-EH and IB9387-H;
55 °C for models IB9387-EHT, IB9387-HT and IB9387-LPR
- 3) All values for T (°C) are re-calculated from T_{amb} respectively.
- 4) EUT was operated continuously with data-link mode and IR LED function is forced to enable.

5.3	TABLE: Fault condition tests						P
	Ambient temperature (°C)					25 °C, if no others states	—
	Power source for EUT: Manufacturer, model/type, output rating					D.C. power supply, 80 V, 19 A	—
Component No.	Fault	Supply voltage (V)	Test time	Fuse #	Fuse current (A)	Observation	
Component failure test							
Heater function is forced to enable.	Q2 pin D to S, TP108 & TP109 short-circuit	PoE 57 Vdc	2.5 h	--	--	Unit operated normally. No damage, no hazard.	
Supplementary information:							
1) In fault column: s-c=short-circuited, o-l=overloaded.							

Product: Network Camera

- Type Designation:
- 1) IB9387-EH
 - 2) IB9387-H
 - 3) **IB9387-EHT**
 - 4) **IB9387-HT and IB9387-LPR**

Outside view (For models IB9387-EHT, IB9387-HT and IB9387-LPR)



Outside view (For models IB9387-EHT, IB9387-HT and IB9387-LPR)



Product: Network Camera

- Type Designation:
- 1) IB9387-EH
 - 2) IB9387-H
 - 3) **IB9387-EHT**
 - 4) **IB9387-HT and IB9387-LPR**

Inside view (For models IB9387-EHT, IB9387-HT and IB9387-LPR)



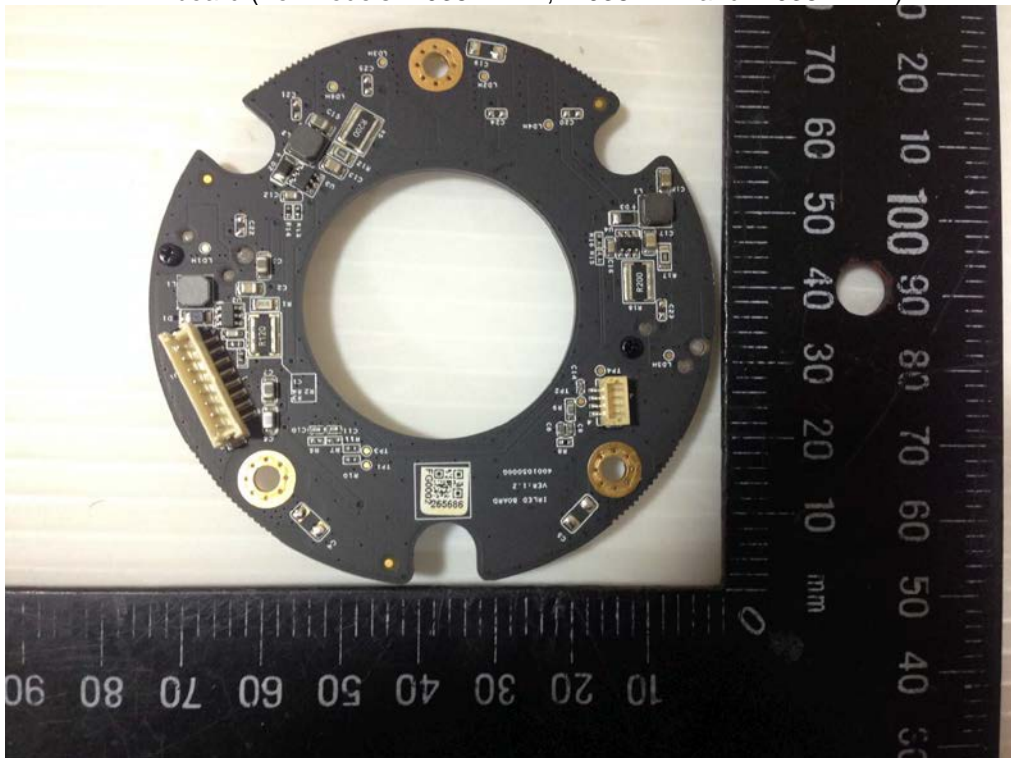
Product: Network Camera

- Type Designation:
- 1) IB9387-EH
 - 2) IB9387-H
 - 3) **IB9387-EHT**
 - 4) **IB9387-HT and IB9387-LPR**

LED board (For models IB9387-EHT, IB9387-HT and IB9387-LPR)



LED board (For models IB9387-EHT, IB9387-HT and IB9387-LPR)



Product: Network Camera

- Type Designation:
- 1) IB9387-EH
 - 2) IB9387-H
 - 3) **IB9387-EHT**
 - 4) **IB9387-HT and IB9387-LPR**

Sensor board with type 2 Lens module (For models IB9387-EHT, IB9387-HT and IB9387-LPR)



Product: Network Camera

Type Designation: 1) IB9387-EH
2) IB9387-H
3) **IB9387-EHT**
4) **IB9387-HT and IB9387-LPR**


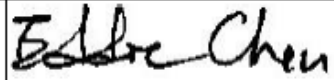
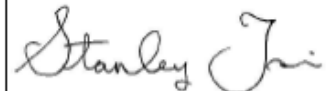


Test Report issued under the responsibility of:



TEST REPORT IEC 60950-22 Information technology equipment – Safety – Part 22: Equipment to be installed outdoors	
Report Number.....	E324690-4788722591.1-1 Amendment 1
Date of issue.....	2019-06-19
Total number of pages.....	24
Name of Testing Laboratory preparing the Report.....	UNDERWRITERS LABORATORIES TAIWAN CO LTD 1ST Fl, 260 DA-YEH RD, PEI TOU DISTRICT, TAIPEI CITY, TAIWAN 112
Applicant's name.....	VIVOTEK INC.
Address	6F, No.192, Lien-Cheng Rd., Chung-Ho, New Taipei City, 235, Taiwan, R.O.C.
Test specification:	
Standard.....	IEC 60950-22 (ed. 2)
Test procedure	CB Scheme
Non-standard test method.....	N/A
Test Report Form No.....	IEC60950_22B
Test Report Form(s) Originator	The Standards Institution of Israel
Master TRF	Dated 2016-04
Copyright © 2016 IEC System of Conformity Assessment Schemes for Electrotechnical Equipment and Components (IECEE System). All rights reserved. This publication may be reproduced in whole or in part for non-commercial purposes as long as the IECEE is acknowledged as copyright owner and source of the material. IECEE takes no responsibility for and will not assume liability for damages resulting from the reader's interpretation of the reproduced material due to its placement and context. If this Test Report Form is used by non-IECEE members, the IECEE/IEC logo and the reference to the CB Scheme procedure shall be removed. This report is not valid as a CB Test Report unless signed by an approved CB Testing Laboratory and appended to a CB Test Certificate issued by an NCB in accordance with IECEE 02.	
General disclaimer:	
The test results presented in this report relate only to the object tested. This report shall not be reproduced, except in full, without the written approval of the Issuing CB Testing Laboratory. The authenticity of this Test Report and its contents can be verified by contacting the NCB, responsible for this Test Report.	

Product: Network Camera
 Type Designation: 1) IB9387-EH
 2) IB9387-H
 3) **IB9387-EHT**
 4) **IB9387-HT and IB9387-LPR**

Test item description		Network Camera	
Trade Mark			
Manufacturer		Same as Applicant	
Model/Type reference		1) IB9387-EH 2) IB9387-H 3) IB9387-EHT 4) IB9387-LPR, IB9387-HT	
Ratings		1) PoE 42.5-57 V, 0.46-0.34 A ; DC 12 V, 1.25 A 2) PoE 37-57 V, 0.22-0.14 A ; DC 12 V, 0.5 A 3) PoE 42.5-57 Vdc, 0.55-0.41 A ; DC 12 V, 1.58 A 4) PoE 37-57 Vdc, 0.33-0.21 A or DC 12 V, 0.83 A	
Responsible Testing Laboratory (as applicable), testing procedure and testing location(s):			
<input checked="" type="checkbox"/>	CB Testing Laboratory:	UNDERWRITERS LABORATORIES TAIWAN CO LTD	
Testing location/ address		1ST FL, 260 DA-YEH RD, PEI TOU DISTRICT, TAIPEI CITY, TAIWAN 112	
<input type="checkbox"/>	Associated CB Testing Laboratory:		
Testing location/ address			
Tested by (name, function, signature)		Eddie Chen, Project Handler	
Approved by (name, function, signature) ..		Stanley Tsai, Reviewer	
<input type="checkbox"/>	Testing procedure: CTF Stage 1:		
Testing location/ address			
Tested by (name, function, signature)			
Approved by (name, function, signature) ..			
<input type="checkbox"/>	Testing procedure: CTF Stage 2:		
Testing location/ address			
Tested by (name + signature)			
Witnessed by (name, function, signature) ..			
Approved by (name, function, signature) ..			

Product: Network Camera

- Type Designation:
- 1) IB9387-EH
 - 2) IB9387-H
 - 3) **IB9387-EHT**
 - 4) **IB9387-HT and IB9387-LPR**

<input type="checkbox"/>	Testing procedure: CTF Stage 3:	
<input type="checkbox"/>	Testing procedure: CTF Stage 4:	
Testing location/ address		:
Tested by (name, function, signature)		:
Witnessed by (name, function, signature) ..		:
Approved by (name, function, signature) ..		:
Supervised by (name, function, signature) :		:

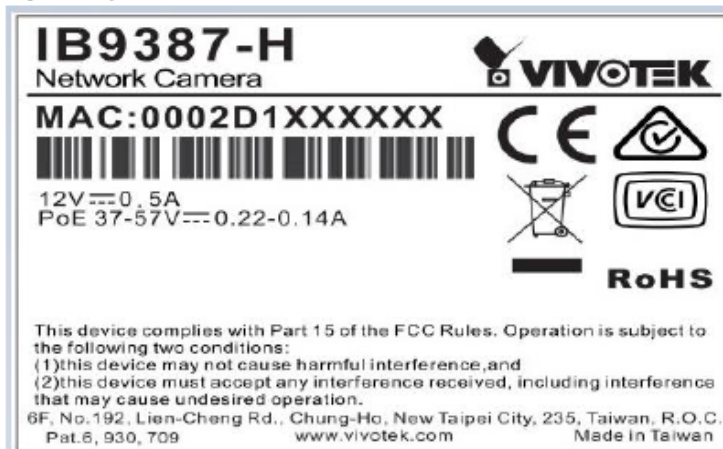
Product: Network Camera
Type Designation: 1) IB9387-EH
 2) IB9387-H
 3) **IB9387-EHT**
 4) **IB9387-HT and IB9387-LPR**

<p>List of Attachments (including a total number of pages in each attachment): Photo (1 pages) National Differences (2 pages)</p>	
<p>Summary of testing: - The manufacturer submitted representative production sample of Network Camera, Model FD9365-HTVL employing alternate 1. Add models (IB9387-EHT, IB9387-LPR, IB9387-HT) with new front cover, IR LED board. 2. Add new input ratings for new models used. 3. Add one Tma for new models used. - The unit was considered exposed SELV circuit. - The following tests were conducted according to CSA C22.2 NO. 60950-22-17 Edition 2, Revision Date 2017/03/31 & UL 60950-22 Edition 2, Revision Date 2017/03/31.</p>	
<p>Tests performed (name of test and test clause): 4.2.5, 4.2.1, PART 22 10.2 – IMPACT TEST 9.1, ANNEX B – WATER SPRAY TEST</p>	<p>Testing location: UNDERWRITERS LABORATORIES TAIWAN CO LTD/ 1ST FL, 260 DA-YEH RD, PEI TOU DISTRICT, TAIPEI CITY, TAIWAN 112.</p>
<p>Summary of compliance with National Differences (List of countries addressed): Countries outside the CB Scheme membership may also accept this report. List of countries addressed: CA, US, EU. <input checked="" type="checkbox"/> The product fulfils the requirements of ___ EN 60950-22:2017 ___ (insert standard number and edition and delete the text in parenthesis, leave it blank or delete the whole sentence, if not applicable)</p>	

Product: Network Camera
Type Designation: 1) IB9387-EH
 2) IB9387-H
 3) **IB9387-EHT**
 4) **IB9387-HT and IB9387-LPR**

Copy of marking plate:

The artwork below may be only a draft. The use of certification marks on a product must be authorized by the respective NCBs that own these marks.



Product: Network Camera
Type Designation: 1) IB9387-EH
2) IB9387-H
3) **IB9387-EHT**
4) **IB9387-HT and IB9387-LPR**

<p>IB9387-EHT Network Camera</p> <p>MAC: 0002D1XXXXXX</p>  <p>12V \equiv 1.58A PoE 42.5-57V \equiv 0.55-0.41A</p>      <p>This device complies with Part 15 of the FCC Rules. Operation is subject to the following two conditions: (1) this device may not cause harmful interference, and (2) this device must accept any interference received, including interference that may cause undesired operation. 6F, No. 192, Lien-Cheng Rd., Chung-Ho, New Taipei City, 235, Taiwan, R.O.C. Pat.6, 930, 709 www.vivotek.com Made in Taiwan</p>
<p>IB9387-HT Network Camera</p> <p>MAC: 0002D1XXXXXX</p>  <p>12V \equiv 0.83A PoE 37-57V \equiv 0.33-0.21A</p>      <p>This device complies with Part 15 of the FCC Rules. Operation is subject to the following two conditions: (1) this device may not cause harmful interference, and (2) this device must accept any interference received, including interference that may cause undesired operation. 6F, No. 192, Lien-Cheng Rd., Chung-Ho, New Taipei City, 235, Taiwan, R.O.C. Pat.6, 930, 709 www.vivotek.com Made in Taiwan</p>
<p>IB9387-LPR Network Camera</p> <p>MAC: 0002D1XXXXXX</p>  <p>12V \equiv 0.83A PoE 37-57V \equiv 0.33-0.21A</p>      <p>This device complies with Part 15 of the FCC Rules. Operation is subject to the following two conditions: (1) this device may not cause harmful interference, and (2) this device must accept any interference received, including interference that may cause undesired operation. 6F, No. 192, Lien-Cheng Rd., Chung-Ho, New Taipei City, 235, Taiwan, R.O.C. Pat.6, 930, 709 www.vivotek.com Made in Taiwan</p>

Product: Network Camera
Type Designation: 1) IB9387-EH
 2) IB9387-H
 3) **IB9387-EHT**
 4) **IB9387-HT and IB9387-LPR**

Test item particulars	
Temperature range	-40 to 50 °C for model IB9387-EH, IB9387-H; -50 to 55 °C for model IB9387-EHT, IB9387-HT, IB9387-LPR
Overvoltage category	<input type="checkbox"/> OVC I <input type="checkbox"/> OVC II <input type="checkbox"/> OVC III <input type="checkbox"/> OVC IV
IP protection class	IPX0
Possible test case verdicts:	
- test case does not apply to the test object	
- test object does meet the requirement	
- test object does not meet the requirement	
Testing	
Date of receipt of test item	2019-05-30
Date (s) of performance of tests	2019-06-04 to 2019-06-05
General remarks:	
"(See Enclosure #)" refers to additional information appended to the report. "(See appended table)" refers to a table appended to the report.	
Throughout this report a <input type="checkbox"/> comma / <input checked="" type="checkbox"/> point is used as the decimal separator.	
This Test Report Form is intended for the investigation of safety of equipment to be installed outdoors in accordance with IEC 60950-22. It can only be used together with the IEC 60950-1 requirements.	
Manufacturer's Declaration per sub-clause 4.2.5 of IEC 60950-1:	
The application for obtaining a CB Test Certificate includes more than one factory location and a declaration from the Manufacturer stating that the sample(s) submitted for evaluation is (are) representative of the products from each factory has been provided.....	<input type="checkbox"/> Yes <input checked="" type="checkbox"/> Not applicable
When differences exist; they shall be identified in the General product information section.	
Name and address of factory (ies)	VIVOTEK INC. 5F, No.168, Lien-Cheng Rd., Chung-Ho, New Taipei City, 235, Taiwan, R.O.C.

Product: Network Camera

- Type Designation:
- 1) IB9387-EH
 - 2) IB9387-H
 - 3) **IB9387-EHT**
 - 4) **IB9387-HT and IB9387-LPR**

General product information:			
Report Summary:			
All applicable tests according to the referenced standard(s) have been carried out.			
Product Description:			
This product is a Network Camera and intended for wall mounted (fixed) and installed outdoors			
Model Difference:			
All models are similar except for model designation, input ratings, heater, front cover, Lens module, IR LED board and relevant circuit and PCB layout.			
See below table and photo documentation in attachment for details.			
Model	IB9387-EH	IB9387-H	
Input Rating	PoE 42.5-57 Vdc, 0.46-0.34 A or DC 12 V, 1.25 A	PoE 37-57 Vdc, 0.22-0.14 A or DC 12 V, 0.5 A	
Heater	With	Without	
Tma	50		
IR LED board	Type 1		
Front cover	Type 1		
Lens module	Type 1		
Model	IB9387-EHT	IB9387-LPR	IB9387-HT
Input Rating	PoE 42.5-57 Vdc, 0.55-0.41 A or DC 12 V, 1.58 A	PoE 37-57 Vdc, 0.33-0.21 A or DC 12 V, 0.83 A	
Heater	With	Without	
Tma	55		
IR LED board	Type 2		
Front cover	Type 2		
Lens module	Type 2		
History of amendments and modifications:			
This report is a technical amendment and was amended from report no. E324690-4788722591.1-1 Original issued on 2018-12-04 and alternate the following 1. Add models (IB9387-EHT, IB9387-LPR, IB9387-HT) with new front cover, IR LED board. 2. Add new input ratings for new models used. 3. Add one Tma for new models used.			

Product: Network Camera
 Type Designation: 1) IB9387-EH
 2) IB9387-H
 3) **IB9387-EHT**
 4) **IB9387-HT and IB9387-LPR**

IEC 60950-22			
Clause	Requirement + Test	Result - Remark	Verdict
4	CONDITIONS FOR OUTDOOR EQUIPMENT		Pass
4.1	Ambient air temperature		Pass
	Suitability for use at any temperature in the range specified by the manufacturer. If not specified by the manufacturer, the range is taken as -33°C to +40°C	-40 to 50 °C for model IB9387-EH, IB9387-H; -50 to 55 °C for model IB9387-EHT, IB9387-LPR, IB9387-HT	Pass
4.2	Mains supply		N/A
4.2.1	General	Class III equipment.	N/A
	Suitability for the highest mains transient voltage expected in the installation location		N/A
	Components within outdoor equipment that reduce mains transient voltage or the prospective fault current comply with IEC 61643-series		N/A
4.2.2	Mains transient voltage on AC mains supply		N/A
4.2.3	Mains transient voltage on DC mains supply		N/A
4.3	Rise of earth potential		
	Special earthing conditions	Class III equipment.	N/A
	Reference to installation instructions		N/A
5	MARKING AND INSTRUCTIONS		Pass
	Special installation features for protection from conditions in the outdoor location (see 1.7.2 of IEC 60950-1:2005)		Pass
	outdoor enclosure classification according to IEC 60529 (IP Code)		N/A
6	PROTECTION FROM ELECTRICAL SHOCK IN AN OUTDOOR LOCATION		Pass
6.1	Voltage limits of user-accessible parts in outdoor locations (2.2.2 and 2.2.3 of IEC 60950-1:2005/AMD2:2013 with voltage limits of IEC60950-22)		Pass
	Voltages under normal conditions (V)	Accessible parts are less than 21.2 Vp or 30Vdc and are classified as SELV.	Pass
	Voltages under fault conditions (V)	Single fault did not cause excessive voltage in accessible SELV circuits. Limits of 15 V a.c., 21,2 V peak, or 30 V d.c. for longer than 0,2 s under single fault conditions.	Pass
6.2	Limited current circuits in outdoor locations		N/A
	The requirements of 2.4 of IEC60950-1:2005/AMD1:2009/AMD2:2013 apply without change	(see separate test report IEC 60950-1)	N/A

Product: Network Camera
Type Designation: 1) IB9387-EH
 2) IB9387-H
 3) **IB9387-EHT**
 4) **IB9387-HT and IB9387-LPR**

IEC 60950-22			
Clause	Requirement + Test	Result - Remark	Verdict
6.3	Protection for socket-outlet in outdoor locations		N/A
	Use of residual current protective device (RCD) with rated residual operating current not exceeding 30 mA in the mains supply to socket-outlets intended for general use and with a rated current not exceeding 20 A.	Not directly connected to mains.	N/A
	RCD is an integral part of the equipment		N/A
	RCD is part of the building installation (installation instructions)		N/A
7	WIRING TERMINALS FOR CONNECTION OF EXTERNAL CONDUCTORS		N/A
	The mains supply terminations powered via the normal building installation wiring are as specified in 3.3 of IEC 60950-1:2005/AMD2:2013	Not directly connected to mains.	N/A
	The mains supply terminations powered directly from the mains distribution system are as specified in IEC 60364		N/A
8	CONSTRUCTION REQUIREMENTS FOR OUTDOOR ENCLOSURES		Pass
8.1	General		Pass
	Protection against corrosion by use of suitable materials or by application of a protective coating	Enclosure was made of aluminium.	Pass
	Parts serving as a functional part of an outdoor enclosure (e.g., dials, connectors, etc.) comply with the same environmental protection requirements as for the outdoor enclosure	All relevant parts comply with applicable requirements	Pass
	Use of outdoor enclosure to carry current during normal operation	Outdoor enclosure does not carry current during normal operation.	Pass
	Connection of a conductive part of an outdoor enclosure to protective earth for carrying fault currents (see 2.6 of IEC60950-1:2005/AMD1:2009/AMD2:2013 and 8.3 of this standard)		N/A
8.2	Resistance to ultra-violet radiation		N/A
	Resistance of non-metallic parts of an outdoor enclosure to degradation by ultra-violet (UV) radiation	Enclosure was made of aluminium.	N/A
	Parts providing mechanical support:		N/A
	Tensile strength test (ISO 527)		N/A
	Flexural strength test (ISO 178)		N/A
	Parts providing impact resistance:		N/A
	Charpy impact test (ISO 179)		N/A
	Izod impact test (ISO 180)		N/A

Product: Network Camera
Type Designation: 1) IB9387-EH
 2) IB9387-H
 3) **IB9387-EHT**
 4) **IB9387-HT and IB9387-LPR**

IEC 60950-22			
Clause	Requirement + Test	Result - Remark	Verdict
	Tensile impact test (ISO 8256)		N/A
	All parts:		N/A
	Flammability classification (1.2.12 and annex A of IEC 60950-1:2005)		N/A
8.3	Resistance to corrosion		Pass
8.3.1	General	Metallic enclosure was made of aluminum and after evaluated/reviewed the data provided from manufacturer, the construction complied with requirements.	Pass
	Resistance of metallic parts of an outdoor enclosure to the effects of water-borne contaminants		N/A
	Alternate method for 8.3.2-8.3.4 (IEC 61587-1)		N/A
8.3.2	Test apparatus		N/A
	Salt-spray test (IEC 60068-2-11)		N/A
	Test in a water-saturated sulphur dioxide atmosphere (water-saturated sulphur dioxide atmosphere as described in Annex A; chamber as described in ISO 3231)		N/A
8.3.3	Test procedure		N/A
	Alternate test procedure		N/A
8.3.4	Compliance criteria:		
	No rust other than surface corrosion of the protective coating; no cracking or other deterioration that will jeopardize the safety aspects as follows:		N/A
	– continued protection against access to hazardous parts, including after mechanical strength tests; and		N/A
	– continued protection against ingress of dust and water; and		N/A
	– continued provision of earth continuity		N/A
8.4	Bottoms of fire enclosures		N/A
	Comply with 4.6.2 of IEC 60950-1:2005	No bottom opening.	N/A
	Bottom of fire enclosure of outdoor equipment mounted directly and permanently on a non-combustible surface (e.g., concrete or metal)		N/A
8.5	Gaskets		Pass

Product: Network Camera
Type Designation: 1) IB9387-EH
 2) IB9387-H
 3) **IB9387-EHT**
 4) **IB9387-HT and IB9387-LPR**

IEC 60950-22			
Clause	Requirement + Test	Result - Remark	Verdict
8.5.1	General	Annex D.2 MOMENTIVE PERFORMANCE MATERIALS JAPAN L L C Model: TSE2186U(aq)	Pass
8.5.2	Oil resistance		N/A
8.5.3	Securing means	mechanical means used	Pass
9	PROTECTION OF EQUIPMENT WITHIN AN OUTDOOR ENCLOSURE		Pass
9.1	Protection from moisture		Pass
	Adequate protection from the effect of moisture on the enclosed equipment (see Table 2)	After test, no water has entered to enclosure.	Pass
9.2	Protection from plants and vermin		N/A
	Adequate protection if entry by plants and vermin is a consideration	No openings on the enclosure.	N/A
9.3	Protection from excessive dust		N/A
9.3.1	General	Clearance and creepage requirement is considered to meet PD3 requirement	N/A
	Adequate protection against the ingress of the dust through the use of an appropriately rated IP5X or IP6X enclosure, or equivalent		N/A
9.3.2	IP5X equipment		N/A
9.3.3	IP6X equipment		N/A
10	MECHANICAL STRENGTH OF ENCLOSURES		Pass
10.1	General		Pass
	Adequate mechanical strength and protection against access to energized parts and other hazards within the equipment throughout the intended ambient operating range		Pass
10.2	Impact test (4.2.5 of IEC 60950-1)		Pass
	Low temperature conditioning for polymeric enclosures	-50 °C	Pass
	Compliance criteria:	Conduct Impact test before Water spray.	Pass
	- after test the level of protection remains in accordance with 9.1 of this standard		Pass
	- after test the requirements of 4.2.1 of IEC 60950-1: 2005/ AMD1:2009/AMD2:2013 are met		Pass
11	OUTDOOR EQUIPMENT CONTAINING VENTED BATTERIES		N/A
11.1	Risk of explosion from lead acid, NiCd and NiMH batteries		N/A

Product: Network Camera
 Type Designation: 1) IB9387-EH
 2) IB9387-H
 3) **IB9387-EHT**
 4) **IB9387-HT and IB9387-LPR**

IEC 60950-22			
Clause	Requirement + Test	Result - Remark	Verdict
	Adequate ventilation in the compartment housing a valve regulated or vented battery, where gassing is possible during normal usage or over-charging	No such battery was provided.	N/A
	Protection against the risk of ignition of local concentrations of hydrogen and oxygen in a compartment containing both a battery and electrical components		N/A
	Construction of the ventilation system to ensure explosive gases venting in case of any potential fault, including distortion of the battery cases due to overheating or thermal runaway		N/A
	Ventilation tubes used for conducting explosive gas from the battery cases to the outside air		N/A
	Adequate ventilation under single-fault failure conditions in case of mechanical or forced-air ventilation		N/A
	Enclosures with mechanical or electromechanical dampers		N/A
11.2	Ventilation preventing an explosive gas concentration		N/A
	Comply with M.7 of IEC 62368-1:2014		N/A
11.3	Ventilation test		N/A
	Measured hydrogen gas concentration (% by volume)		—
	Max. allowed gas concentration for the mixture location in proximity to an ignition source (% by volume)	≤ 1% by volume	—
	Max. allowed gas concentration for the mixture location not in proximity to an ignition source (% by volume)	≤ 2% by volume	—
	Overcharging of rechargeable battery (see 4.3.8 of IEC 60950-1:2005/AMD2:2013)	(see separate test report IEC 60950-1)	N/A
A	ANNEX A, WATER-SATURATED SULPHUR DIOXIDE ATMOSPHERE (see 8.3.2 and 8.3.3)		N/A
	Test chamber		N/A
	Test method		N/A
B	ANNEX B, WATER SPRAY TEST (see 9.1)		Pass
	Test apparatus		Pass
	Test method		Pass
C	ANNEX C, ULTRAVIOLET LIGHT CONDITIONING TEST (see 8.2)		N/A
C.1	Test apparatus		N/A
C.2	Mounting of test samples		N/A

Product: Network Camera
 Type Designation: 1) IB9387-EH
 2) IB9387-H
 3) **IB9387-EHT**
 4) **IB9387-HT and IB9387-LPR**

IEC 60950-22			
Clause	Requirement + Test	Result - Remark	Verdict
C.3	Carbon-arc light-exposure apparatus.....:		N/A
C.4	Xenon-arc light-exposure apparatus.....:		N/A
D	ANNEX D, GASKET TESTS (see 8.5)		Pass
D.1	Gasket tests		Pass
D.2	Tensile strength and elongation tests (for gaskets that can stretch)	Annex D.2 MOMENTIVE PERFORMANCE MATERIALS JAPAN L L C Model: TSE2186U(aq)	Pass
	Tensile strength (%)	75%	Pass
	Elongation (%)	60%	Pass
	Visible deterioration, deformation, melting, cracking or hardening of the material.....:	No deterioration.	Pass
D.3	Compression test (for gaskets with closed cell construction)	Not closed cell construction.	N/A
	Initial thickness of the specimen (mm)		N/A
	Thickness of the specimen after test a) (mm), compression set after test a) (%).....:		N/A
	Thickness of the specimen after test b) (mm), compression set after test b) (%).....:		N/A
	Thickness of the specimen after test c) (mm), compression set after test c) (%).....:		N/A
	Visible cracks or deterioration		N/A
D.4	Oil immersion test		N/A
	Swelling (%)		N/A
	Shrinking (%).....:		N/A
E	ANNEX E, RATIONALE		—
E.1	General		—
E.2	Electric shock		—
E.3	Energy related hazards		—
E.4	Fire		—
E.5	Mechanical hazards		—
E.6	Heat related hazards		—
E.7	Radiation		—
E.8	Chemical hazards		—
E.9	Biological hazards		—
E.10	Explosion hazards		—

Product: Network Camera
 Type Designation: 1) IB9387-EH
 2) IB9387-H
 3) **IB9387-EHT**
 4) **IB9387-HT and IB9387-LPR**

IEC 60950-22			
Clause	Requirement + Test	Result - Remark	Verdict

8.2	TABLE: Resistance to ultra-violet radiation		
8.2a)	Tensile strength test (ISO 527)		N/A
Material identification (manufacturer, type designation)			—
Shape and dimensions of test samples.....			—
Conditioning for Set 1 of samples			—
Conditioning for Set 2 of samples (including Annex C)			—
Test conditions (T °C, RH %)			—
Set 1 (without Annex C conditioning)		Set 2 (after Annex C conditioning)	
Test sample #	Tensile strength (MPa)	Test sample #	Tensile strength (MPa)
Arithmetic mean for Set 1 (MPa)			
Arithmetic mean for Set 2 (MPa)			
Retention (%).....			
Supplementary information:			

Product: Network Camera
 Type Designation: 1) IB9387-EH
 2) IB9387-H
 3) **IB9387-EHT**
 4) **IB9387-HT and IB9387-LPR**

IEC 60950-22			
Clause	Requirement + Test	Result - Remark	Verdict

8.2	TABLE: Resistance to ultra-violet radiation		
8.2g)	Tensile impact test (ISO 8256) - unnotched		N/A
Material identification (manufacturer, type designation)			—
Shape and dimensions of test samples			—
Conditioning for Set 1 of samples			—
Conditioning for Set 2 of samples (including Annex C)			—
Test method (A or B)			—
Test conditions (T °C, RH %).....			—
Set 1 (without Annex C conditioning)		Set 2 (after Annex C conditioning)	
Test sample #	Tensile impact strength (kJ/m ²)	Test sample #	Tensile impact strength (kJ/m ²)
Arithmetic mean for Set 1 (kJ/m ²).....			
Arithmetic mean for Set 2 (kJ/m ²).....			
Retention (%).....			
Supplementary information:			

Product: Network Camera
 Type Designation: 1) IB9387-EH
 2) IB9387-H
 3) **IB9387-EHT**
 4) **IB9387-HT and IB9387-LPR**

IEC 60950-22			
Clause	Requirement + Test	Result - Remark	Verdict

8.2	TABLE: Resistance to ultra-violet radiation		
8.2h)	Tensile impact test (ISO 8256) - notched		N/A
Material identification (manufacturer, type designation)			—
Shape and dimensions of test samples			—
Conditioning for Set 1 of samples			—
Conditioning for Set 2 of samples (including Annex C)			—
Test method (A or B)			—
Test conditions (T °C, RH %).....			—
Set 1 (without Annex C conditioning)		Set 2 (after Annex C conditioning)	
Test sample #	Tensile impact strength (kJ/m ²)	Test sample #	Tensile impact strength (kJ/m ²)
Arithmetic mean for Set 1 (kJ/m ²).....			
Arithmetic mean for Set 2 (kJ/m ²).....			
Retention (%).....			
Supplementary information:			

Product: Network Camera
Type Designation: 1) IB9387-EH
 2) IB9387-H
 3) **IB9387-EHT**
 4) **IB9387-HT and IB9387-LPR**

IEC 60950-22			
Clause	Requirement + Test	Result - Remark	Verdict

TABLE: Critical components information					N/A
Object / part No.	Manufacturer/ trademark	Type / model	Technical data	Standard	Mark(s) of conformity ¹⁾
(see separate test report IEC 60950-1)					

Supplementary information:
¹⁾ Provided evidence ensures the agreed level of compliance. See OD-CB2039.

Product: Network Camera
Type Designation: 1) IB9387-EH
2) IB9387-H
3) **IB9387-EHT**
4) **IB9387-HT and IB9387-LPR**

List of test equipment used:

A completed list of used test equipment shall be provided in the Test Reports when a Manufacturer Testing Laboratory according to CTF stage 1 or CTF stage 2 procedure has been used.
Note: This page may be removed when CTF stage 1 CTF stage 2 are not used. See also clause 4.8 in OD 2020 for more details.

Clause	Measurement / testing	Testing / measuring equipment / material used, (Equipment ID)	Range used	Last Calibration date	Calibration due date

Product: Network Camera

- Type Designation:
- 1) IB9387-EH
 - 2) IB9387-H
 - 3) **IB9387-EHT**
 - 4) **IB9387-HT and IB9387-LPR**

Photos



Product: Network Camera
Type Designation: 1) IB9387-EH
 2) IB9387-H
 3) **IB9387-EHT**
 4) **IB9387-HT and IB9387-LPR**

ATTACHMENT

CSA/UL 60950-22:2007 first edition for Canada and USA; - SPECIAL NATIONAL CONDITIONS			
Clause	Requirement + Test	Result - Remark	Verdict
4	Applicable parts of Chapter 8 of the NEC and Rules 54 and 60 of the CEC may be applicable to ITE installed outdoors with connections to communication systems.		P
4.2	Power supply cords are to be suitable outdoor use type as required by Section 400-4 of the NEC and Rule 4-012 of the CEC, i.e., marked "water resistant," "outdoor," "W" or "W-A."		N/A
4.2	Surge Arrestors and Transient Voltage Surge Suppressors installed external to the ITE are required to comply with the appropriate NEC and CEC requirements.		N/A
5	Outdoor Enclosures are required to be classified and marked in accordance with UL 50 and CAN/CSA C22.2 No. 94.		N/A
7	Applicable parts of the NEC, NFPA 70; the National Electrical Safety Code, ANSI/IEEE C2; and Canadian Electrical Code, Part I, CSA C22.1; Canadian Electrical Code, Part III, CSA C22.3, are required, as appropriate.		N/A
7	Wiring terminals intended to supply Class 2 outputs are required per Article 725 of the NEC and Rule 16 of the CEC to be marked.		N/A
11	Requires stationary installations of storage batteries external to the ITE to comply with Article 480 of the NEC and Rule 26-540 of the CEC.		N/A
OTHER DIFFERENCES			
1.2	For protection of ITE against direct lightning strikes, reference is made to NFPA 780 and CAN/CSA-B72-M87 (R2003) for additional requirements.		P
2	All references to IEC 60950-1 in this standard are replaced by the equivalent UL 60950-1 and CSA 60950-1 Standards. All relevant Standards referenced in the Part 1 Standard (Annex P, including P.1 and P.2) also apply to this Part 22 Standard and are not listed below. All references to clauses and subclauses in IEC 60950-1 are to the second edition. If the relevant clause or subclause has been renumbered in IEC 60950-1, second edition, the first edition reference is identified in parentheses directly after the second edition reference.		P

Product: Network Camera
Type Designation: 1) IB9387-EH
 2) IB9387-H
 3) **IB9387-EHT**
 4) **IB9387-HT and IB9387-LPR**

EN 60950-22:2006/A11:2008 – COMMON MODIFICATIONS		
Contents	Add the following annexes: Annex ZA (normative) Normative references to international publications with their corresponding European publications Annex ZB (normative) Special national conditions	N/A
General	Delete all the "country" notes in the reference document according to the following list: 4.1 Note 3 4.3 Note 8.5 Note 10.2 Note D.3 Note D.4 Note	N/A
ZA	NORMATIVE REFERENCES TO INTERNATIONAL PUBLICATIONS WITH THEIR CORRESPONDING EUROPEAN PUBLICATIONS	—
ZB	SPECIAL NATIONAL CONDITIONS	N/A
4.1	In Finland, Norway and Sweden, the temperature in winter may be extremely low. For OUTDOOR EQUIPMENT this will demand special design so that the equipment can withstand transport, erection and operation/service at temperatures down to -50°C	This National Condition has been removed in EN 60950-22:2006 + A11:2008.
10.2	In Finland, Norway and Sweden there are additional requirements for the minimum ambient temperature. See 4.1 of this annex.	This National Condition has been removed in EN 60950-22:2006 + A11:2008.
D.3	In Finland, Norway and Sweden there are additional requirements for the minimum ambient temperature. See 4.1 of this annex.	This National Condition has been removed in EN 60950-22:2006 + A11:2008.